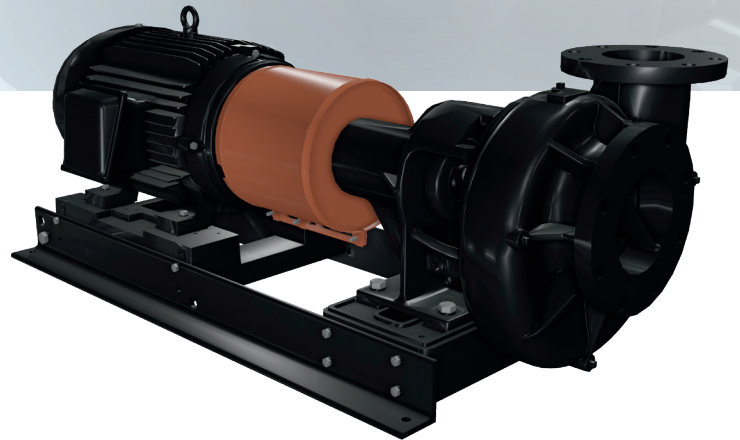


Frame Mounted End Suction Pump

LF

The LF frame mounted end suction pump serves as the industry standard in performance, quality, and durability. Advanced features and benefits incorporated as standard, as well as optional features that meet specialized needs, set these high efficiency, end suction pumps apart as the broadest line offered to the marketplace.



KEY FEATURES AND BENEFITS

- Double volute design increases efficiency, lowers life cycle costs, and prolongs seal and bearing life
- Francis Vane impeller design increases efficiency and reduces NPSH required
- Integrally cast diffuser vane reduces turbulence and need for suction guides
- Bronze case wear rings as standard extend pump life and increase efficiency
- Back pull-out design enables maintenance without disturbing piping
- Footed bearing frame eases maintenance
- Stainless steel balanced impellers (standard) can be trimmed to specification for customization
- Footless volute establishes single point support for reducing alignment restrictions and permits discharge orientation flexibility
- Machined mounting surfaces and fabricated base plate aids in alignment
- Choice of motor enclosures increases flexibility of design
- Large seal chamber allows various seal configurations and customization
- NSF61/50 certification available

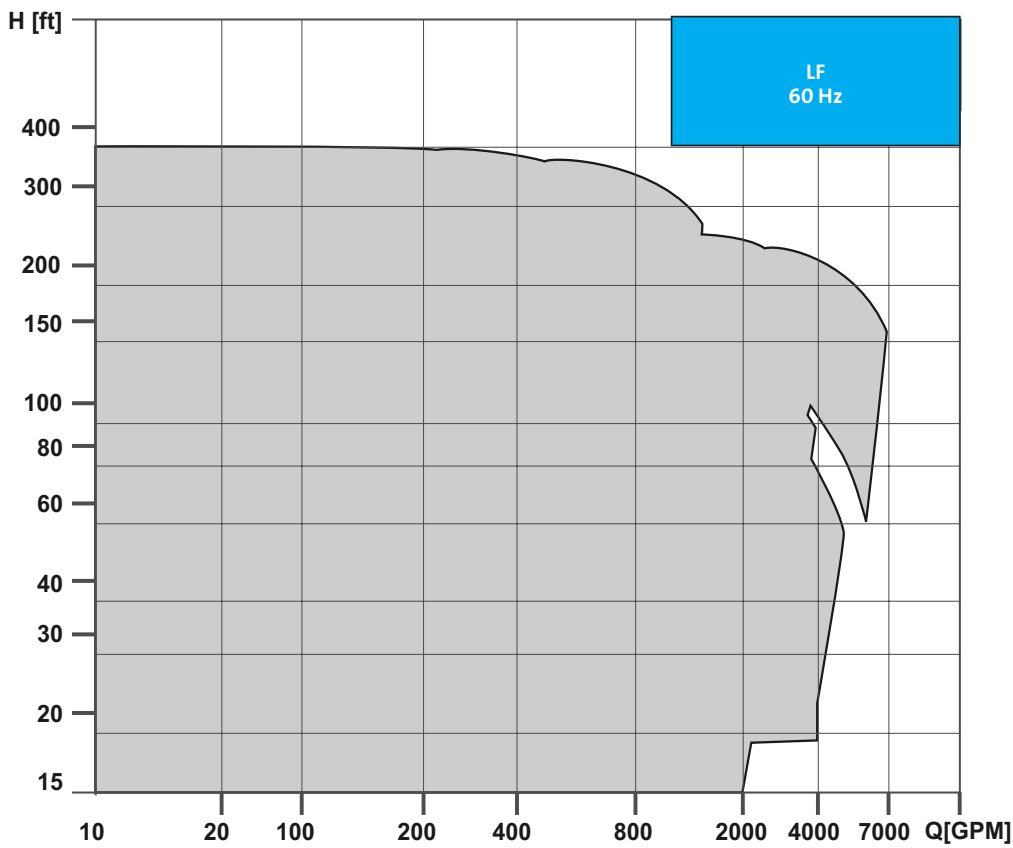
APPLICATIONS

- HVAC
- Plumbing
- Pressure boosting
- Industrial
- Water utility
- Wastewater
- Agriculture

TECHNICAL DATA

LF	
FLOW, Q:	max. 6,000 gpm
HEAD, H:	max. 400 ft
LIQUID TEMPERATURE:	max. 275°F
HP RANGE:	1/3 to 300 hp
DISCHARGE SIZES:	1 to 10 in

PERFORMANCE DATA



Visit grundfos.us/pei to learn more about Department of Energy (DOE) pump energy index (PEI) requirements and PEI ratings on specific Grundfos models.