

# **BALDOR**® • **RELIANCE**

## Product Information Packet

# CFM3136A

.5HP,1140RPM,3PH,60HZ,56YZ,3516M,OPEN,F1

Part Detail							
Revision:	N	Status:	PRD/A	Change #:		Proprietary:	No
Type:	AC	Prod. Type:	3516M	Elec. Spec:	35WG6771	CD Diagram:	CD0007
Enclosure:	OPEN	Mfg Plant:		Mech. Spec:	35K306	Layout:	35LYK306
Frame:	56YZ	Mounting:	F1	Poles:	06	Created Date:	
Base:	N	Rotation:	R	Insulation:	B	Eff. Date:	04-02-2015
Leads:	12#18					Replaced By:	
Literature:		Elec. Diagram:					

<b>Nameplate NP1257L</b>	
<b>CAT.NO.</b>	CFM3136A
<b>SPEC.</b>	35K306-6771G1
<b>HP</b>	.5
<b>VOLTS</b>	208-230/460
<b>AMP</b>	2.5-2.4/1.2
<b>RPM</b>	1140
<b>FRAME</b>	56YZ
<b>SER.F.</b>	1.15
<b>NEMA-NOM-EFF</b>	70
<b>RATING</b>	60C AMB-CONT
<b>CC</b>	
<b>DE</b>	6203
<b>ENCL</b>	OPEN
<b>ODE</b>	6205
<b>SN</b>	
<b>CODE</b>	L
<b>PF</b>	55
<b>HZ</b>	60
<b>DES</b>	B
<b>CL</b>	B
<b>PH</b>	3
<b>USABLE AT 208V</b>	2.5

Parts List		
Part Number	Description	Quantity
SA079935	SA 35K306-6771G1	1.000 EA
RA073352	RA 35K306-6771G1	1.000 EA
TPMYJ72KX	THERMAL 3PH 0.75 AUT 120C	1.000 EA
RM1001A01	GROMMET "MIDSTATES"	1.000 EA
53XT0832G07	8-32X7/16 PN STD SR TY23G X	1.000 EA
HA6001A01	THERMAL RETAINER (PLATED)	1.000 EA
51XW0832A07	8-32 X .44, TAPTITE II, HEX WSHR SLTD SE	2.000 EA
35EP3200A02	PUEP OPEN 205 BRG	1.000 EA
51XW0832A07	8-32 X .44, TAPTITE II, HEX WSHR SLTD SE	2.000 EA
MJ5004A05	#242-21 LOCTITE GENERAL PURPOSE MED. STR	0.010 EA
HW5100A03SP	WAVY WASHER (W1543-017)	1.000 EA
35EP3102B42	PUEP SH THRU HOLE .50 NPT, 2 #26 DRILL F	1.000 EA
XY1032A02	10-32 HEX NUT DIRECTIONAL SERRATION	4.000 EA
35CB4500SP	TERMINAL BOX LID STAMPED	1.000 EA
HA1041A01	CUPPED SLINGER KENCO	1.000 EA
HW2501D40	KEY, 3/16 SQ X 4.750	1.000 EA
HA7000A04	KEY RETAINER 0.625 DIA SHAFTS	1.000 EA
85XU0407S04	4X1/4 U DRIVE PIN STAINLESS	2.000 EA
10XN2520A06	1/4 20X3/8 HX HD CAP	3.000 EA
MJ1000A02	GREASE, POLYREX EM EXXON (USe 4824-15A)	0.050 LB
35GS1002A02	GASKET,1/16 THICK NEOPRE.FT.SMITH MADE	1.000 EA
51XW0832A07	8-32 X .44, TAPTITE II, HEX WSHR SLTD SE	2.000 EA
MG1000G27	MED CHARCOAL METALLIC GREY 400-0096	0.017 GA
SP5079A02	MODEL 35 3PH TERM PANEL CONN 12LD DUAL V	1.000 EA

<b>Parts List (continued)</b>		
<b>Part Number</b>	<b>Description</b>	<b>Quantity</b>
HA3100A56	THRUBOLT 10-32 X 8.625	4.000 EA
LB1118	LABEL,WARNING (ROLL LABEL)	1.000 EA
LC0007A01	CONN LABEL TYPE M,DV,REV,12LD 2Y/1Y TERM	1.000 EA
NP1257L	ALUM UL CSA CC THERMAL REV MTG	1.000 EA
36PA1000	PKG GRP, PRINT PK1016A06	1.000 EA
MN416A01	TAG-INSTAL-MAINT no wire (1200/bx) 11/14	1.000 EA

**AC Induction Motor Performance Data**  
Record # 36516 - Typical performance - not guaranteed values

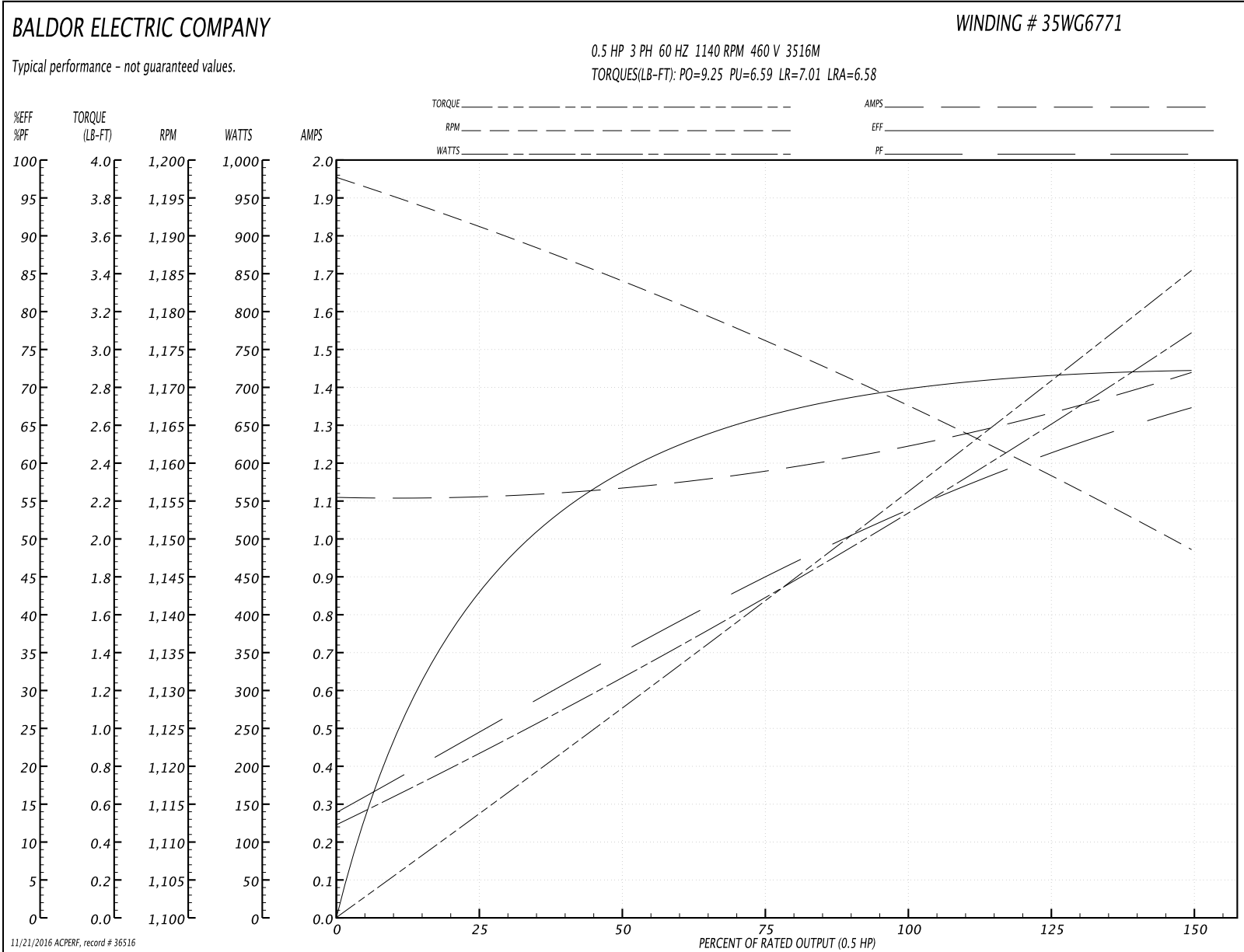
<b>Winding:</b> 35WG6771-R003	<b>Type:</b> 3516M	<b>Enclosure:</b> OPEN
-------------------------------	--------------------	------------------------

Nameplate Data				460 V, 60 Hz: High Voltage Connection	
Rated Output (HP)	.5			Full Load Torque	2.33 LB-FT
Volts	208-230/460			Start Configuration	direct on line
Full Load Amps	2.5-2.4/1.2			Breakdown Torque	9.25 LB-FT
R.P.M.	1140			Pull-up Torque	6.59 LB-FT
Hz	60	Phase	3	Locked-rotor Torque	7.01 LB-FT
NEMA Design Code	B	KVA Code	L	Starting Current	6.58 A
Service Factor (S.F.)	1.15			No-load Current	1.11 A
NEMA Nom. Eff.	70	Power Factor	55	Line-line Res. @ 25°C	35.4 Ω
Rating - Duty	60C AMB-CONT			Temp. Rise @ Rated Load	
				Locked-rotor Power Factor	71
				Rotor inertia	0.0949 LB-FT <sup>2</sup>

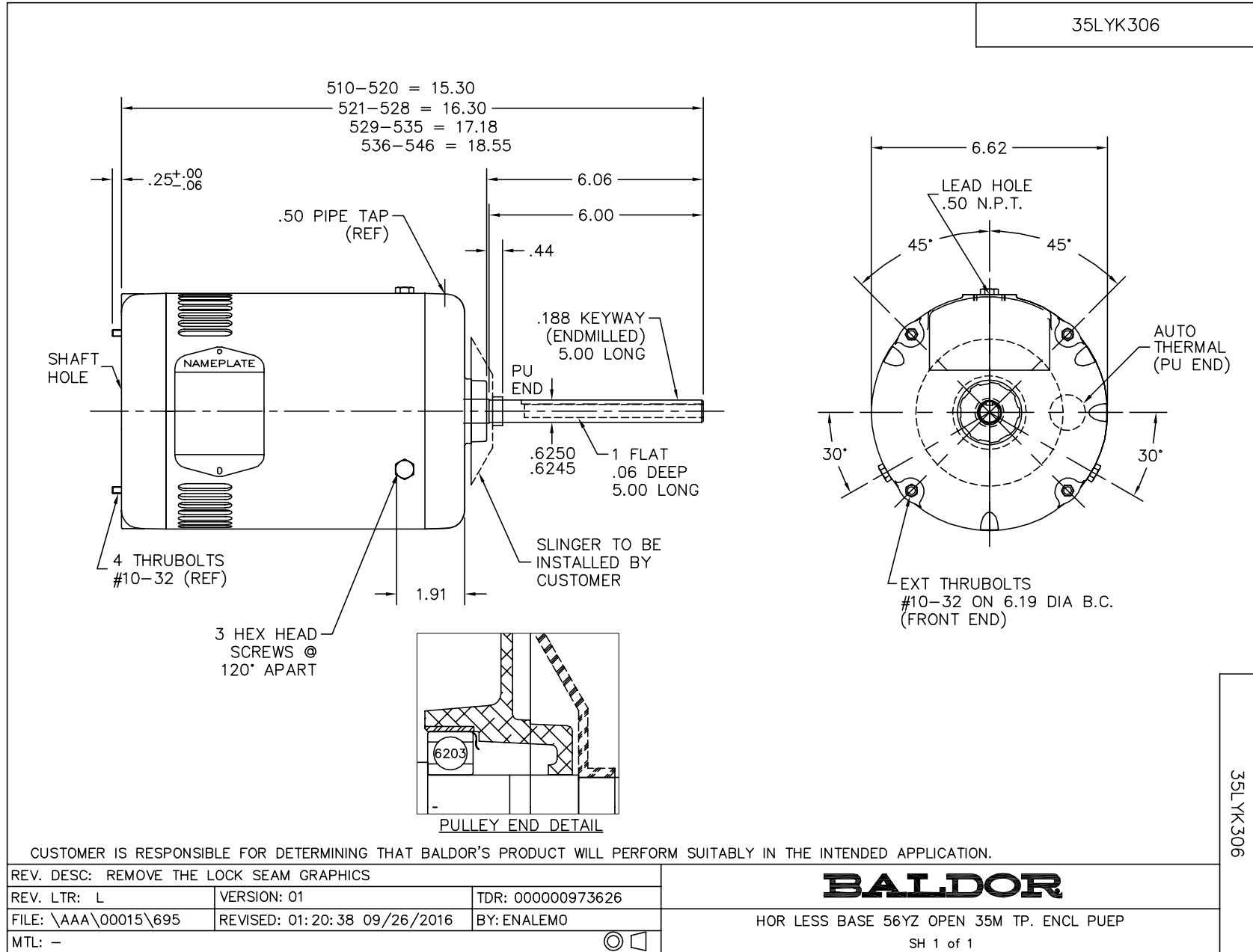
**Load Characteristics 460 V, 60 Hz, 0.5 HP**

% of Rated Load	25	50	75	100	125	150	S.F.
Power Factor	25	36	46	55	62	67	59
Efficiency	43.4	59.3	66.6	70.4	71.9	72.1	71.3
Speed	1191	1183	1175	1167	1158	1148	1162
Line amperes	1.11	1.14	1.18	1.26	1.34	1.44	1.31

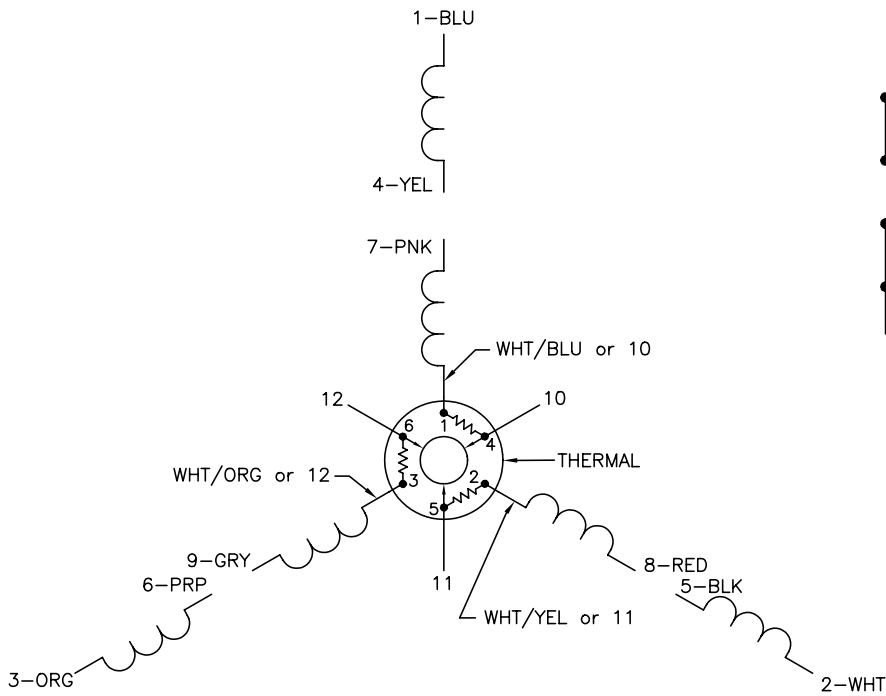
Performance Graph at 460V, 60Hz, 0.5HP Typical performance - Not guaranteed values



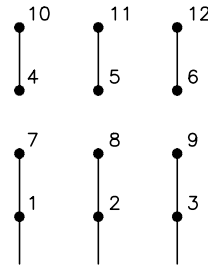
11/21/2016 ACPERF: record # 36516



CD0007

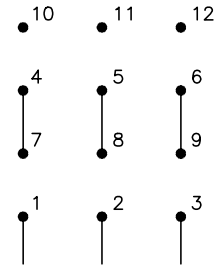


LOW VOLTAGE  
(2Y)



LINE

HIGH VOLTAGE  
(1Y)



LINE

NOTES:

1. INTERCHANGE ANY TWO LINE LEADS TO REVERSE ROTATION.
2. ACTUAL NUMBER OF INTERNAL PARALLEL CIRCUITS MAY VARY.
3. LEAD COLORS ARE OPTIONAL. LEADS MUST ALWAYS BE NUMBERED AS SHOWN.

REV. DESC: ADDED "CK" PLANT CODE			
REV. LTR: E	BY: EAH	REVISED: 05/06/99 17:1	TDR: 0181040
L00000		FILE: AAA00008370	MDL: -
		MTL: -	

**BALDOR ELECTRIC Co.**

3PH, DV, THERMAL, 12 LEADS

CD0007