

BALDOR® • RELIANCE

Product Information Packet

EL1406T

3HP,3450RPM,1PH,60HZ,182T,3628LC,OPEN,F1

Part Detail							
Revision:	N	Status:	PRD/A	Change #:		Proprietary:	No
Type:	AC	Prod. Type:	3628LC	Elec. Spec:	36WGS117	CD Diagram:	CD0055
Enclosure:	OPEN	Mfg Plant:		Mech. Spec:	36E002	Layout:	36LYE002
Frame:	182T	Mounting:	F1	Poles:	02	Created Date:	11-13-2008
Base:	RG	Rotation:	R	Insulation:	F	Eff. Date:	01-19-2017
Leads:	4#14 A PH,2#16 B PH					Replaced By:	
Literature:		Elec. Diagram:					

Nameplate NP2116L	
CAT.NO.	EL1406T
SPEC.	36E002S117E7
HP	3
VOLTS	115/230
AMP	24.6/12.3
RPM	3450
FRAME	182T
HZ	60
PH	1
SER.F.	1.15
CODE	G
DES	L
CL	F
NEMA-NOM-EFF	81
PF	98
RATING	40C AMB-CONT
CC	USABLE AT 208V
DE	6206
ODE	6205
ENCL	OPEN
SN	

Parts List		
Part Number	Description	Quantity
SA177110	SA 36E002S117E7	1.000 EA
RA165163	RA 36E002S117E7	1.000 EA
OC3070C09	AEROVOX #Z24P247OM22A1 OIL CAP 70MFD/240	1.000 EA
EC1815A06SP	ELEC CAP 115V 2.0 X 4.3	1.000 EA
36CB3004	36 CB CASTING W/1.09 DIA LEAD HOLE @ 6:0	1.000 EA
51XB1016A08	10-16X 1/2HXWSSLD SERTYB	2.000 EA
11XW1032G06	10-32 X .38, TAPTITE II, HEX WSHR SLTD U	1.000 EA
HW3001B01	BRASS CUP WASHER, FOR #8 SCREW	1.000 EA
36EP3200A01	FR ENDPLATE, ASSEMBLY FOR ROUTING	1.000 EA
HW4500A01	1641B(ALEMITE)400 UNIV, GREASE FITT	1.000 EA
SP1008A01	BAFFLE, MODEL 36 & 37	1.000 EA
13XF0832A08	8-32 X.50 PAN HD,SLTD, TYPE F SCREW, ZIN	2.000 EA
10XN2520A12	O1/4-20X 3/4 HEX HEAD CAP	2.000 EA
HW5100A05	WVY WSHR F/205 & 304 BRGS	1.000 EA
36PE3201A01	PU ENDPLATE, ASSEMBLY FOR ROUTING	1.000 EA
HW4500A01	1641B(ALEMITE)400 UNIV, GREASE FITT	1.000 EA
XY2520A12	1/4-20 HEX NUT, DIRECTIONAL SERRATIONS	4.000 EA
36CB4516	36 LIPPED CB LID	1.000 EA
51XW0832A07	8-32 X .44, TAPTITE II, HEX WSHR SLTD SE	4.000 EA
HW2501E16	3KEY, 1/4 SQ X 1.750	1.000 EA
HA7000A02	KEY RETAINER RING, 1 1/8 DIA, 1 3/8 DIA	1.000 EA
85XU0407S04	4X1/4 U DRIVE PIN STAINLESS	2.000 EA
WD1000A15	3-520132-2 AMP FLAG (4M/RL NON-CANC/NON-	4.000 EA
36CB3800SP	CAPACITOR COVER, CAST	1.000 EA

Parts List (continued)		
Part Number	Description	Quantity
HA7010A01	CAPACITOR RETENTION CLAMP, 6.562 LONG	1.000 EA
MJ1000A02	GREASE, POLYREX EM EXXON (USe 4824-15A)	0.050 LB
MG1000Y03	MUNSELL 2.53Y 6.70/ 4.60, GLOSS 20,	0.022 GA
HA3101A25	THRUBOLT 1/4-20 X 11.000 OHIO ROD	4.000 EA
SP5064A01	MODEL 36 TYPE LC STATIONARY SWITCH LEAD	1.000 EA
LC0001A01	CONN LABEL / WARNING LABEL (LC0001 / LB1	1.000 EA
NP2116L	ALUM SUPER-E UL CSA CC	1.000 EA
36PA1001	PKG GRP, PRINT PK1017A06	1.000 EA
MN416A01	TAG-INSTAL-MAINT no wire (1000/bx) 11/14	1.000 EA

AC Induction Motor Performance Data
Record # 61436 - Typical performance - not guaranteed values

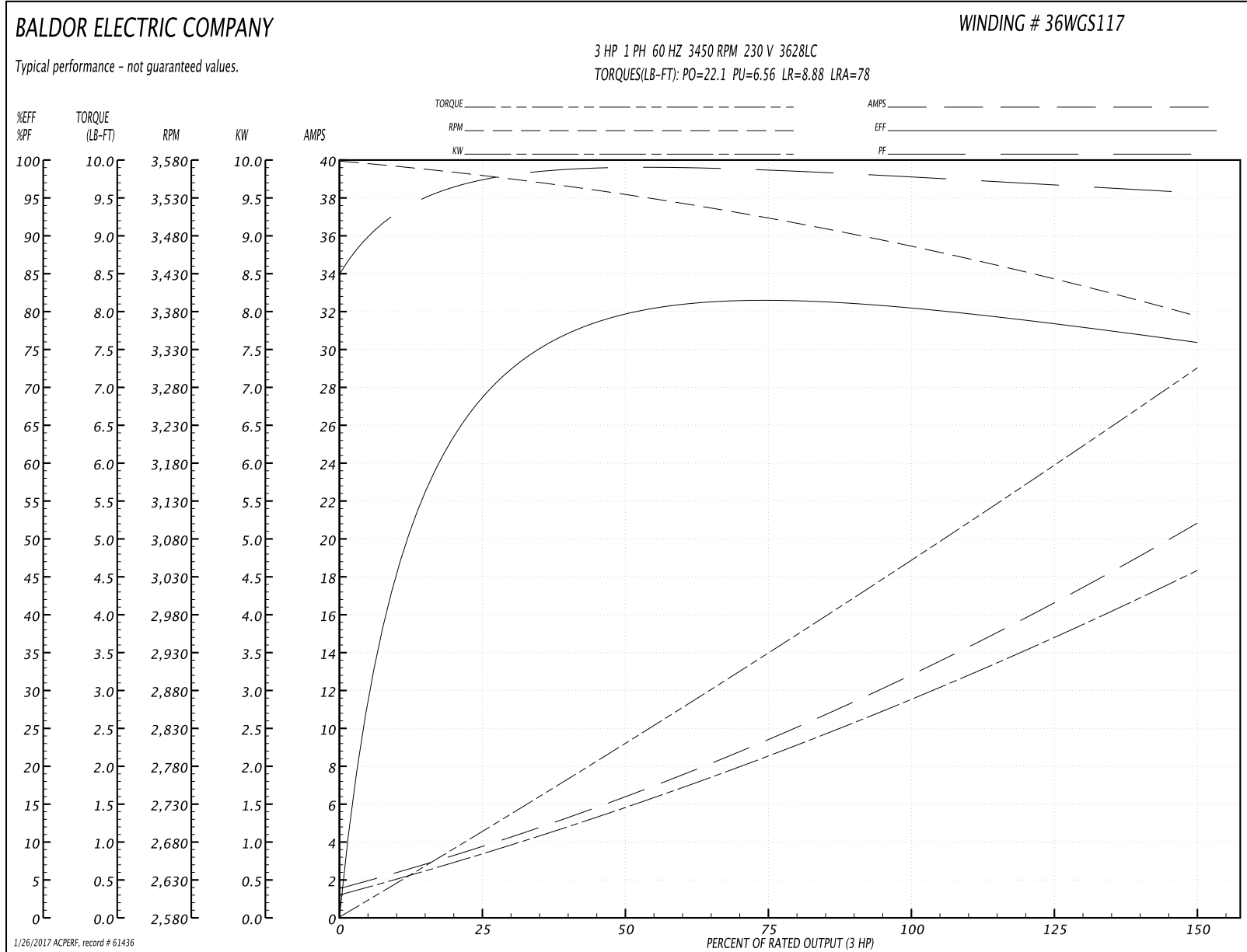
Winding: 36WGS117-R002	Type: 3628LC	Enclosure: OPEN
-------------------------------	---------------------	------------------------

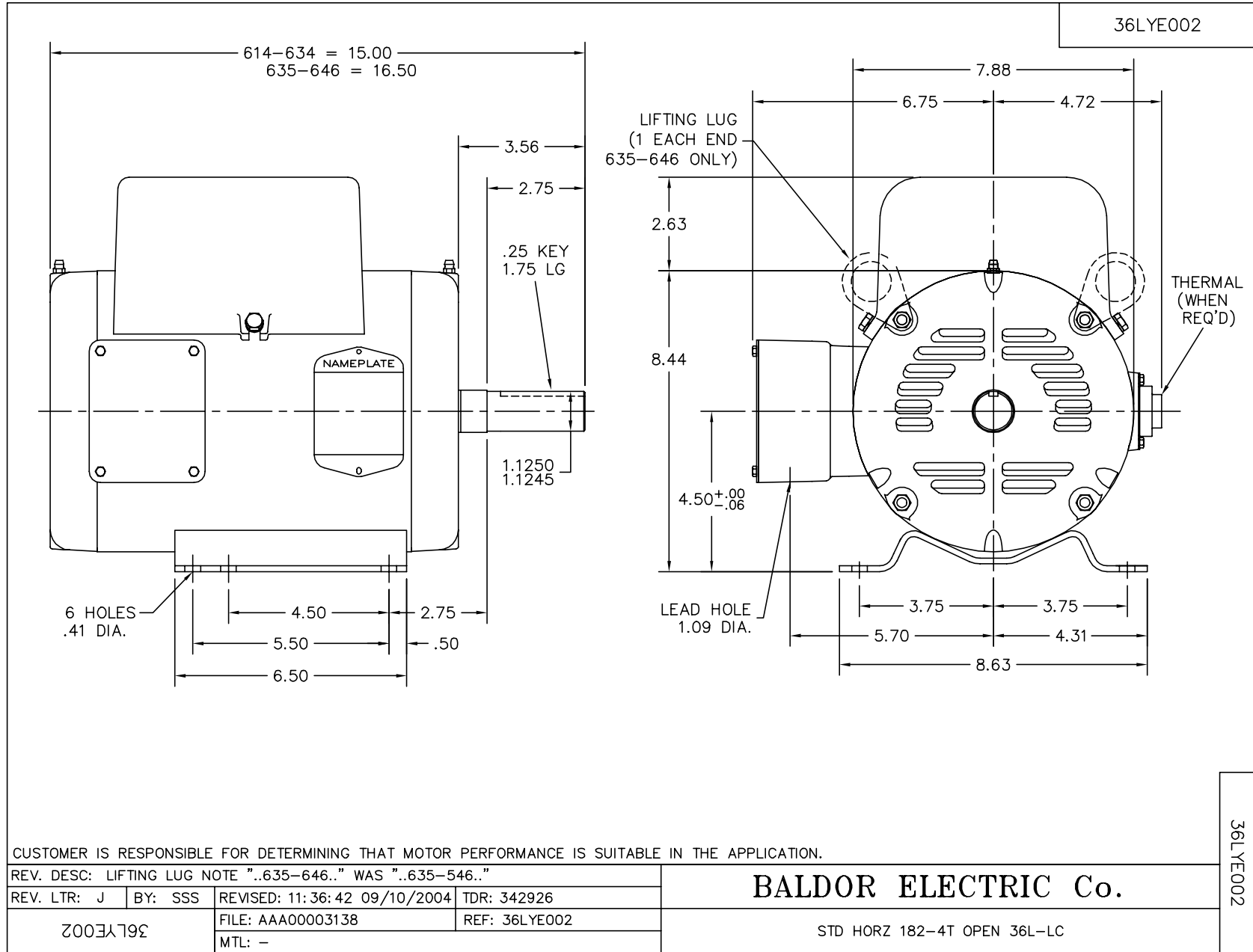
Nameplate Data				230 V, 60 Hz: High Voltage Connection	
Rated Output (HP)	3			Full Load Torque	4.56 LB-FT
Volts	115/230			Start Configuration	direct on line
Full Load Amps	24.6/12.3			Breakdown Torque	22.1 LB-FT
R.P.M.	3450			Pull-up Torque	6.56 LB-FT
Hz	60	Phase	1	Locked-rotor Torque	8.88 LB-FT
NEMA Design Code	L	KVA Code	G	Starting Current	78 A
Service Factor (S.F.)	1.15			No-load Current	1.46 A
NEMA Nom. Eff.	81	Power Factor	98	Line-line Res. @ 25°C	0.74602 Ω A Ph 0.85786 Ω B Ph
Rating - Duty	40C AMB-CONT			Temp. Rise @ Rated Load	32°C
S.F. Amps				Temp. Rise @ S.F. Load	39°C

Load Characteristics 230 V, 60 Hz, 3 HP

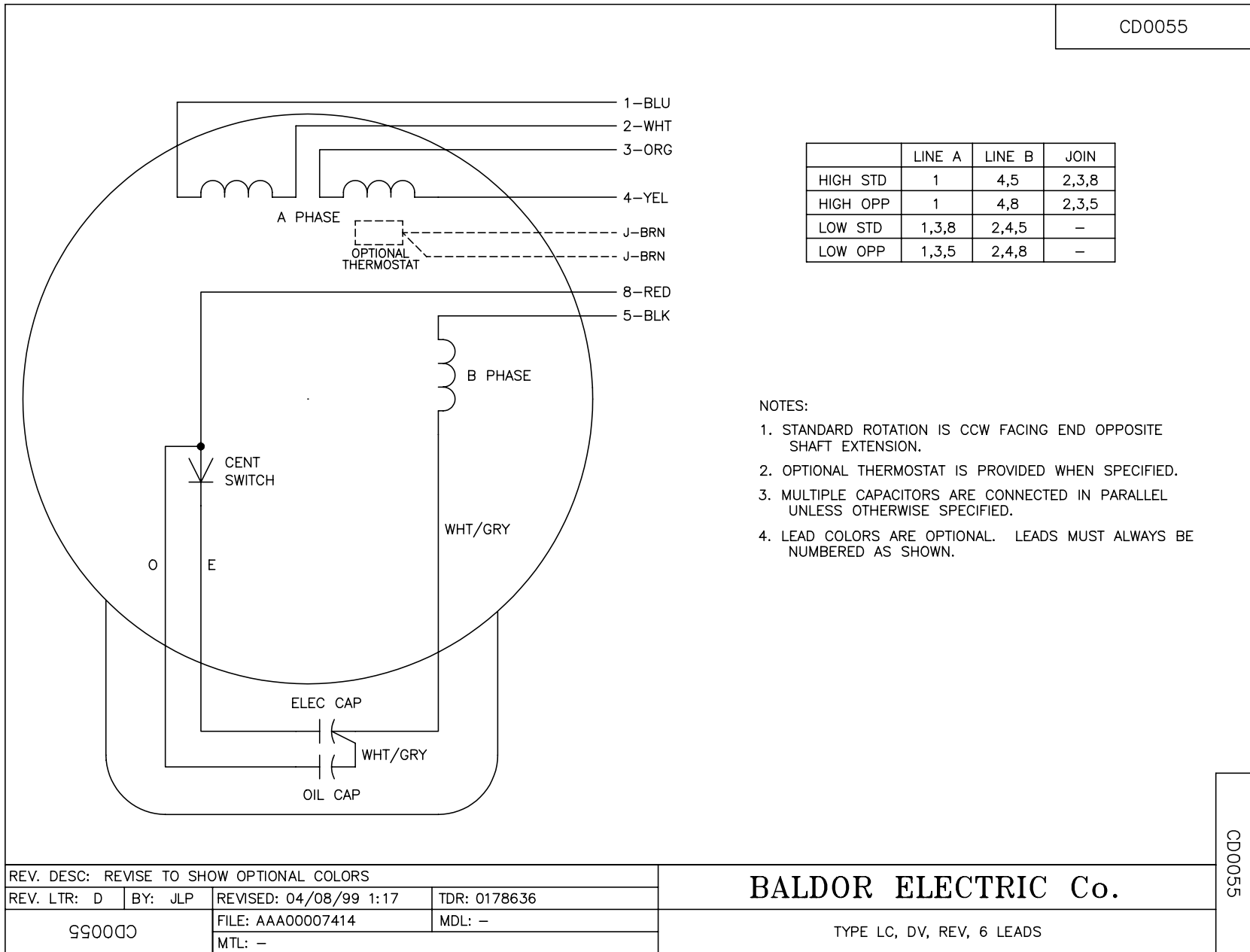
% of Rated Load	25	50	75	100	125	150	S.F.
Power Factor	98	98	98	98	97	96	97
Efficiency	67.4	77.6	81.1	81.1	79.6	75.5	80.2
Speed	3559	3533.3	3506	3471.6	3436.5	3370.6	3451
Line amperes	3.72	6.42	9.17	12.3	15.7	21	14.3

Performance Graph at 230V, 60Hz, 3.0HP Typical performance - Not guaranteed values





CD0055



REV. DESC: REVISE TO SHOW OPTIONAL COLORS			
REV. LTR: D	BY: JLP	REVISED: 04/08/99 1:17	TDR: 0178636
990000		FILE: AAA00007414	MDL: -
		MTL: -	

BALDOR ELECTRIC Co.

TYPE LC, DV, REV, 6 LEADS

CD0055