

BALDOR® • ***RELIANCE***

Product Information Packet

VPECP4313T

75HP,3555RPM,3PH,60HZ,365VP,TEFC,V1

Part Detail							
Revision:	A	Status:	PRD/A	Change #:		Proprietary:	No
Type:	AC	Prod. Type:	A36068M	Elec. Spec:	A36WG0319	CD Diagram:	416820-002
Enclosure:	TEFC	Mfg Plant:		Mech. Spec:		Layout:	616555-992
Frame:	365VP	Mounting:	V1	Poles:	02	Created Date:	07-01-2015
Base:		Rotation:	R	Insulation:	F	Eff. Date:	03-30-2016
Leads:	3#2,6#4					Replaced By:	
Literature:		Elec. Diagram:					

Nameplate NP2496L	
MOBIL POLYREX EM	

Nameplate NP3238									
CAT NO	VPECP4313T	SPEC NO.	A36-6893-0319						
HP	75	AMPS	161/80.7	VOLTS	230/460	DESIGN	B		
FRAME	365VP	RPM	3555	HZ	60	AMB	40	SF	1.15
D.E. BRG.DATA	6313	O.D.E. BRG.DATA	7310	PH	3	DUTY	CONT	INSUL.CLASS	F
D.E. BRG.	65BC03JP30X	TYPE	P	ENCL	TEFC	CODE	G	NEMA NOM EFFICIENCY	94.5
O.D.E. BRG.	BA2B_459310	POWER FACTOR	92	MAX CORR KVAR	5	GUARANTEED EFFICIENCY	93.6		
3/4 LOAD EFF.	95.2	TEMP CODE	T3	TEMP	= 200				
CHP HZ	60-90	CT HZ	15-60	VT HZ	0-60				
INVERTER-TEMP-CODE	T3								
SER.NO.		MOTOR WEIGHT	1005						

Parts List		
Part Number	Description	Quantity
SA303164	SA A36-6893-0319	1.000 EA
RA290282	RA A36-6893-0319	1.000 EA
421948032	LABEL, MYLAR	1.000 EA
NP2496L	MOTOR LUBE NAMEPLATE	1.000 EA
000613006PU	N/P (RELEASE QTY 10,000) UL CSA LABEL	1.000 EA
000692000FF	N/P	1.000 EA
000692000VD	LABEL WARNING	1.000 EA
NP3238	SS CP XEX SEVERE DUTY MAIN NP	1.000 EA
418185012FL	B/BRG ANGULAR SET - 360	1.000 PR
035051010AA	BBLCW W-10	1.000 EA
085922097A	BRKT 360 087793066WCC	1.000 EA
415072001B	CLAMP	1.000 EA
078559035AA	F/C 360 078559035WCC	1.000 EA
034180008FA	KEY 3/8X3/8X1L - 320	1.000 EA
412118006A	DRAIN	1.000 EA
702675001A	FAN 250-440	1.000 EA
004824015A	GREASE POLYREX EM	0.540 LB
032018016DK	HHCS 1/2-13X2L PLTD.	4.000 EA
032018010CK	HHCS 3/8-16X1-1/4 PLTD.	4.000 EA
032018030CK	HHCS 3/8-16X3-3/4 PLATED	3.000 EA
034630002AB	CPLG 1/4" PLATED	1.000 EA
415096002A	CPLG 1/8 HEX TYPE	1.000 EA
415045002H	SLGR	1.000 EA
034017014AB	LCKW 3/8 STD. PLATED	4.000 EA

Parts List (continued)		
Part Number	Description	Quantity
034017014AB	LCKW 3/8 STD. PLATED	3.000 EA
034530052AB	P/NIP 1/8X6-1/2 GALV.	1.000 EA
034530016BC	P/NIP 1/4X2 GALV. - 320	1.000 EA
034690002AB	"unbulked" PPLG 1/4" PLTD.	1.000 EA
034690002AB	"unbulked" PPLG 1/4" PLTD.	1.000 EA
089495002A	BRKT 360 089495001WCA	1.000 EA
032018012DK	HHCS 1/2-13X1-1/2 PLTD.	4.000 EA
032018030CK	HHCS 3/8-16X3-3/4 PLATED	3.000 EA
415045002E	SLGR	1.000 EA
034017014AB	LCKW 3/8 STD. PLATED	3.000 EA
412118006A	DRAIN	1.000 EA
410700004F	WSHR	1.000 EA
076708000BB	C/B - 360	1.000 EA
065776000C	TERBD 320-400	1.000 EA
076709000A	C/B - 360	1.000 EA
067053000B	GASK 320-400	1.000 EA
418150003A	GREASE FITTING CAP	1.000 EA
032018010CK	HHCS 3/8-16X1-1/4 PLTD.	4.000 EA
032018022CK	HHCS 3/8-16X2-3/4 PLTD	4.000 EA
405851012AN	SPACE	4.000 EA
702641041A	D/CVR 360 SUB PAINT	1.000 EA
034017014AB	LCKW 3/8 STD. PLATED	4.000 EA
035000001A	ALFTG 1/8" 1610-BL	1.000 EA
415000103D	T/LUG #4AWG-1/0AWG W/HOLE FOR .250 BOLT	1.000 EA

Product Information Packet: VPECP4313T - 75HP,3555RPM,3PH,60HZ,365VP,TEFC,V1

033512008LB	HHTTS 1/4-20X1 PLATED	4.000 EA
034000014AB	WSH ID.406 OD.812 TH.065	4.000 EA
034000014AB	WSH ID.406 OD.812 TH.065	4.000 EA
033512004LB	HHTTS 1/4-20X1/2 PLTD.	1.000 EA
048977006B	GRFTG - XP	1.000 EA
035000001A	ALFTG 1/8" 1610-BL	1.000 EA
418150003A	GREASE FITTING CAP	1.000 EA
033775004EA	DRSCR #6-1/4 304 S.S.	4.000 EA
609013011C	LFT/P - 360	2.000 EA
032018012EK	HHCS 5/8-11X1-1/2L PLTD.	4.000 EA
034017018AB	LCKW 5/8"	4.000 EA
034180024FA	KEY 3/8X3/8X3 L	1.000 EA
034017018AB	LCKW 5/8"	2.000 EA
604797045	STD. 400 FRAME SKID	1.000 EA
033102018AG	NUT 5/8-11 PLATED	2.000 EA
032018012EK	HHCS 5/8-11X1-1/2L PLTD.	2.000 EA
604797064C	2"X4"-24"	2.000 EA
604797064C	2"X4"-24"	1.000 EA
604797064C	2"X4"-24"	1.000 EA
604797064C	2"X4"-24"	1.000 EA
415038028A	BLOCK,SHIPPING	1.000 EA
415038028B	BLOCK,SHIPPING	1.000 EA
MG1025N19	WILKO 778.50 BLUE GREEN - 55 GAL DRUMS	0.250 GA

REL. S.O.	FRAME	HP	TYPE	PHASE/HERTZ	RPM	VOLTS
	365TSC	75	P	3/60	3555	230/460
AMPS	DUTY	AMB °C/ INSUL.	S.F.	NEMA DESIGN	CODE LETTER	ENCL.
161/80.7	CONT	40/F	1.15	B	G	TEFC
E/S	ROTOR	TEST S.O.	TEST DATE	STATOR RES. @25 °C OHMS (BETWEEN LINES)		
892019	418141005TE	---	---	.0186/.0744		

PERFORMANCE

LOAD	HP	AMPERES	RPM	POWER FACTOR %	EFFICIENCY %
NO LOAD	0	15.5	3600	7.78	0
1/4	18.8	24.4	3589	77.5	92.8
2/4	37.6	40.7	3579	90.8	95.1
3/4	56.2	59.9	3568	92.1	95.4
4/4	75.0	80.7	3556	91.5	95.0
5/4	93.8	102	3543	90.9	94.4

SPEED TORQUE

	RPM	TORQUE % FULL LOAD	TORQUE LB.-FT.	AMPERES
LOCKED ROTOR	0	218	242	536
PULL UP	1565	190	210	440
BREAKDOWN	3395	228	253	259
FULL LOAD	3556	100	111	80.7

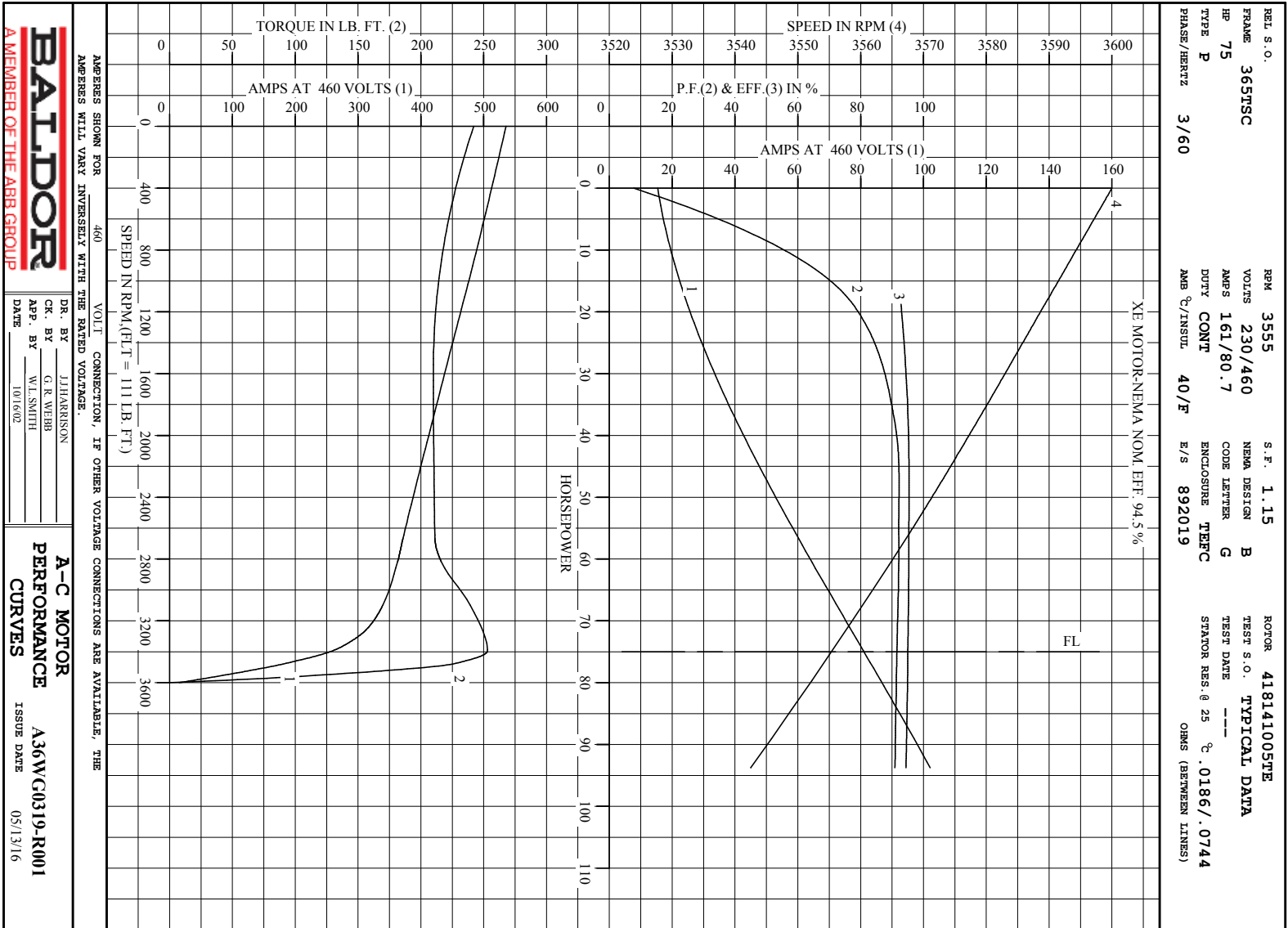
AMPERES SHOWN FOR 460. VOLT CONNECTION. IF OTHER VOLTAGE CONNECTIONS ARE AVAILABLE, THE AMPERES WILL VARY INVERSELY WITH THE RATED VOLTAGE

REMARKS: TYPICAL DATA
 XE MOTOR-NEMA NOM. EFF. 94.5 %



DR. BY J.J. HARRISON
 CK. BY G.R. WEBB
 APP. BY W.L. SMITH
 DATE 10/16/02

A-C MOTOR PERFORMANCE DATA
 A36WG0319-R001
 ISSUE DATE 05/13/16

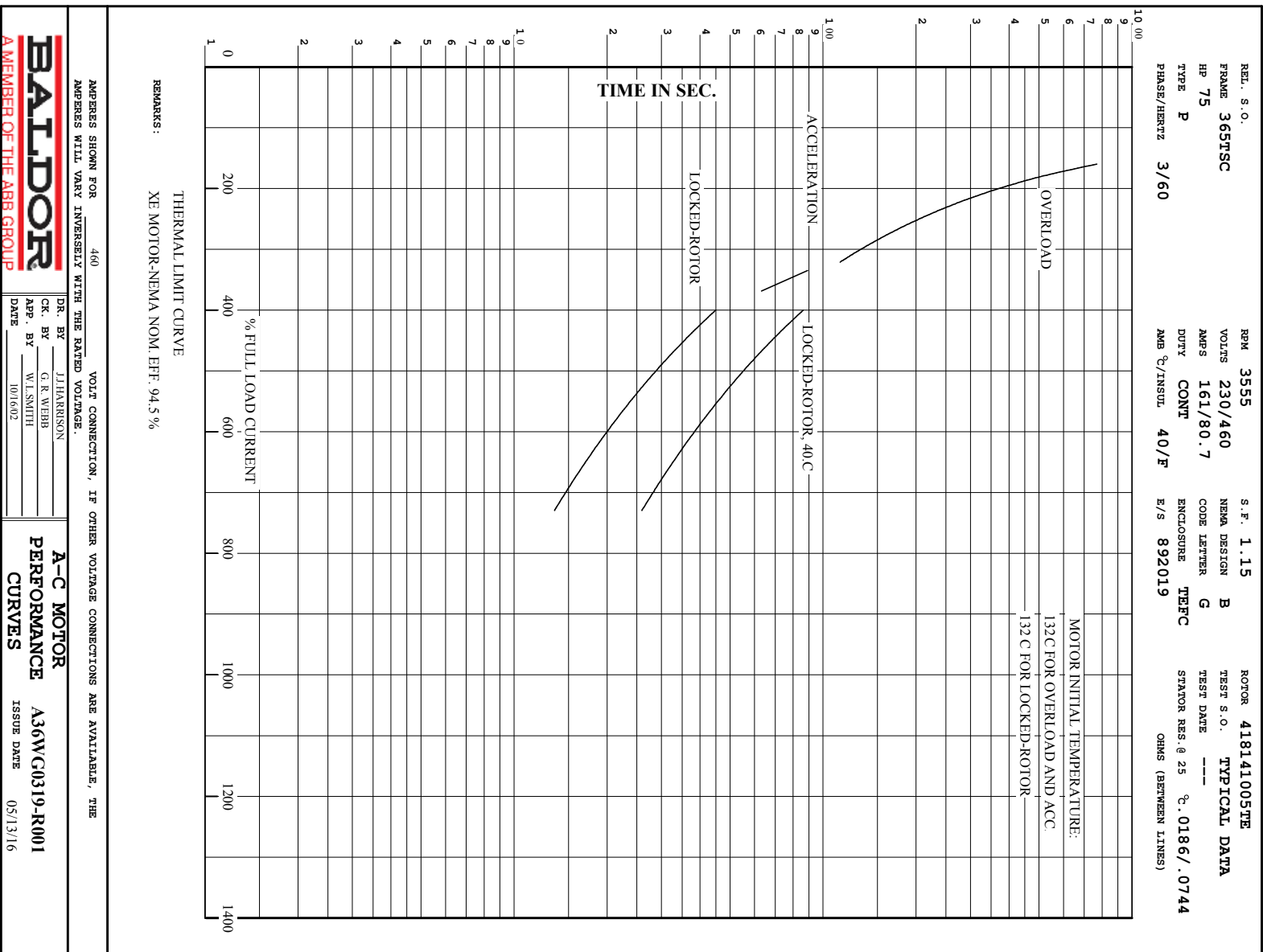


AMPS SHOWN FOR 460 VOLT CONNECTION, IF OTHER VOLTAGE CONNECTIONS ARE AVAILABLE, THE AMPS WILL VARY INVERSELY WITH THE RATED VOLTAGE.

BALDOR
A MEMBER OF THE ABB GROUP

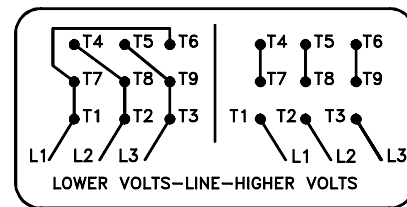
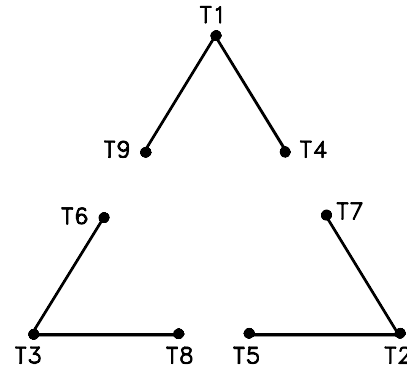
DR. BY J.HARRISON CK. BY G.R.WEBB App. BY W.L.SMITH DATE 10/16/02	A-C MOTOR PERFORMANCE CURVES A36WC0319-R001 ISSUE DATE 05/13/16
--	--

Printed on 5/13/16 14:35 @ bengap01.baldor.com



416820-002

A-C MOTOR
 CONNECTION DIAGRAM
 STANDARD 9 LEAD DELTA-CONNECTED



(N.P. 1575-B)

416820-002

REV. DESC: LOADED TO BUS, C/R 335225		
REV. LTR: -	VERSION: 00	TDR: 000000538207
FILE: \MGA\00000\661	REVISED: 10: 47: 51 04/30/2010	
MTL: -	BY: RAGRA	

BALDOR

CONN DIAG - STANDARD 9 LEAD, DELTA-CONNECTED

SH 1 of 1

Marketing maintained PDF of MN416:

<http://www.baldor.com/support/Literature/Load.ashx/MN416?ManNumber=MN416>

Marketing maintained PDF of MN421:

<http://www.baldor.com/support/Literature/Load.ashx/MN421?ManNumber=MN421>