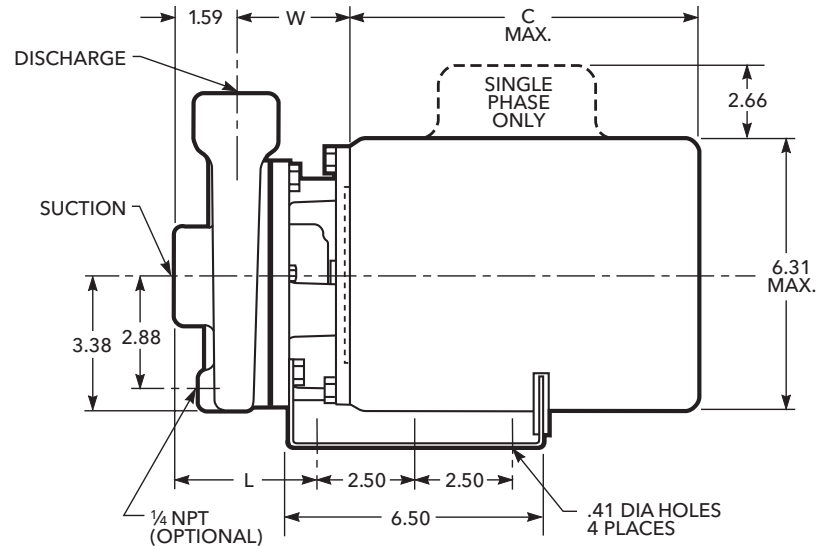
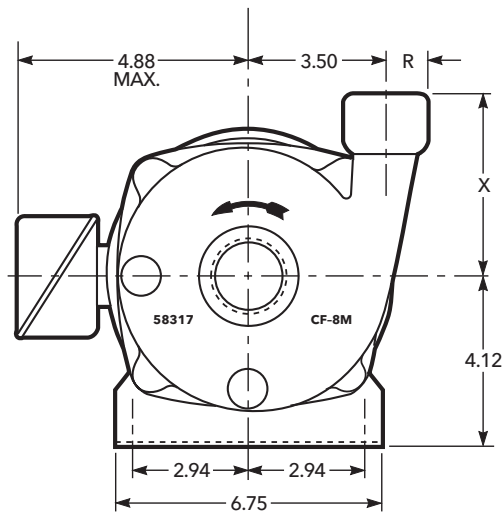


# ICS Dimension Print

STAINLESS STEEL, CLOSE-COUPLED CENTRIFUGAL PUMPS ½ - 2 HP

## ENGINEERING DATA

Clockwise Rotation Viewed from Drive End	Installation Drawing No. 119-64	Certified for construction purposes <input type="checkbox"/> For Approval      For Record <input type="checkbox"/>	
		By	Date



## WEIGHTS AND DIMENSIONS - DETERMINED BY PUMP

Pump Size	Suction NPT	Discharge NPT	L	R	W	X	*Weight Max.
1 x 1¼-5	1¼	1	3.75	.94	3.01	4.62	17
1¼ x 1½-5	1½	1¼	3.62	1.06	2.88	4.56	17

### NOTES:

1. Pumps will be shipped with top vertical discharge as standard, for other orientations, remove casing bolts, rotate to desired position, and tighten ¾" bolts to 24 lbs.-ft.
2. Dimensions in inches, weight in pounds.
3. Not to be used for construction purposes unless certified.
4. Motor dimensions may vary with motor manufacturers.

**\*Weight is liquid end only. For complete pump, add weight of applicable motor.**

## AVAILABLE MOTOR WEIGHTS

HP	Motor Weight						C Max. Length
	1 Phase			3 Phase			
	ODP	TEFC	EXP	ODP	TEFC	EXP	
½	16	21	47	19	18	27	9 <sup>15</sup> / <sub>16</sub>
¾	19	24	41	21	21	30	10¼
1	22	26	49	23	21	30	11
1½	28	35	56	27	27	37	11 <sup>5</sup> / <sub>16</sub>
2	33	39	60	32	33	44	12 <sup>1</sup> / <sub>16</sub>

1750 RPM uses only ½ HP and ¾ HP motors.

3500 RPM uses ½ through 3 HP

### Xylem Inc.

2881 East Bayard Street Ext., Suite A, Seneca Falls, NY 13148

Phone: (800) 453-6777 Fax: (888) 322-5877

[www.xyleminc.com/brands/gouldswatertechnology](http://www.xyleminc.com/brands/gouldswatertechnology)

