

MYERS[®]
SRA-125D
DUPLEX RAIL SYSTEM

MYERS® SRA-125D

The SRA-125D Rail System is tailored to your specific hydraulic needs for low pressurized sewer system requirements. Engineered with heavy duty cast iron lift-out elbow with built-in check valve. SST hardware and anti-siphon protection, the SRA-125D Rail System is the preferred choice. Offered in simplex or duplex design with centrifugal submersible grinder pumps coupled with a range of quality controls and accessories.

- Built-in check valve
- Fast and easy pump removal
- No need for personnel to enter basin
- Heavy-duty cast iron construction
- Corrosion resistant with anti-flotation ring
- Multiple basin diameters and basin depths are available
- Positive machine fit with o-ring seal
- Available with float controls



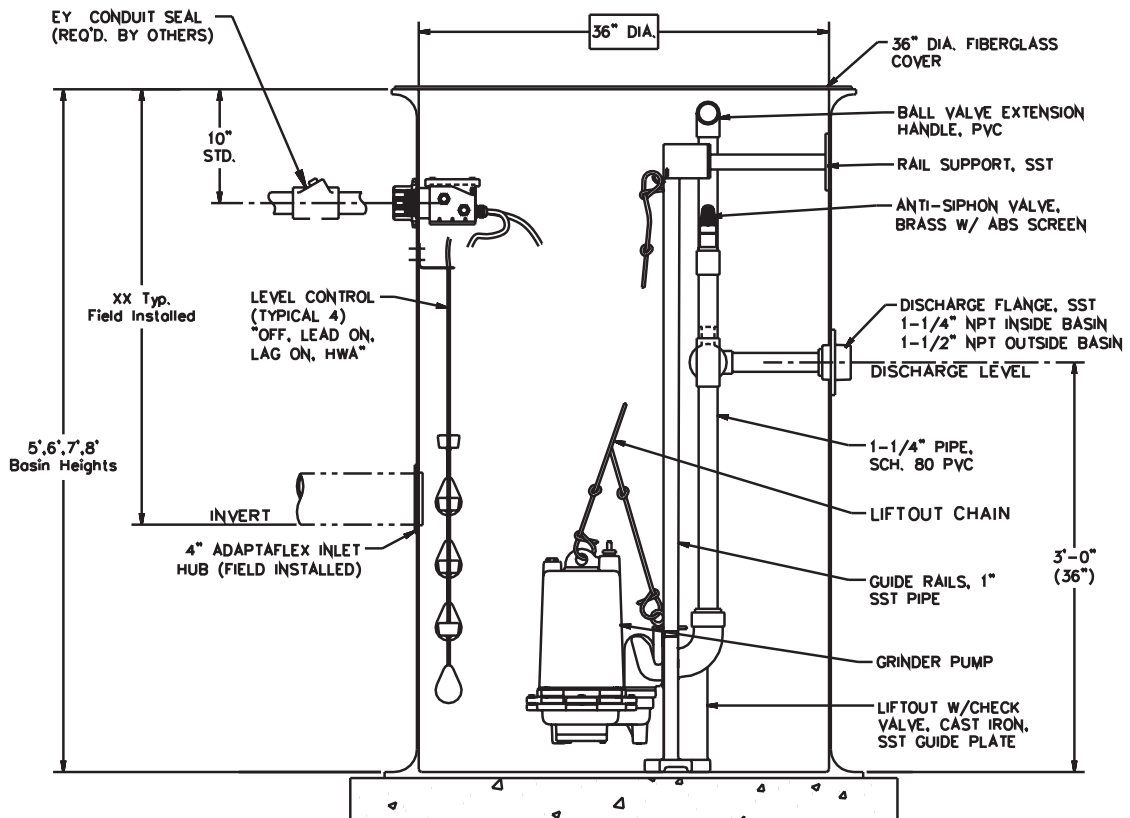
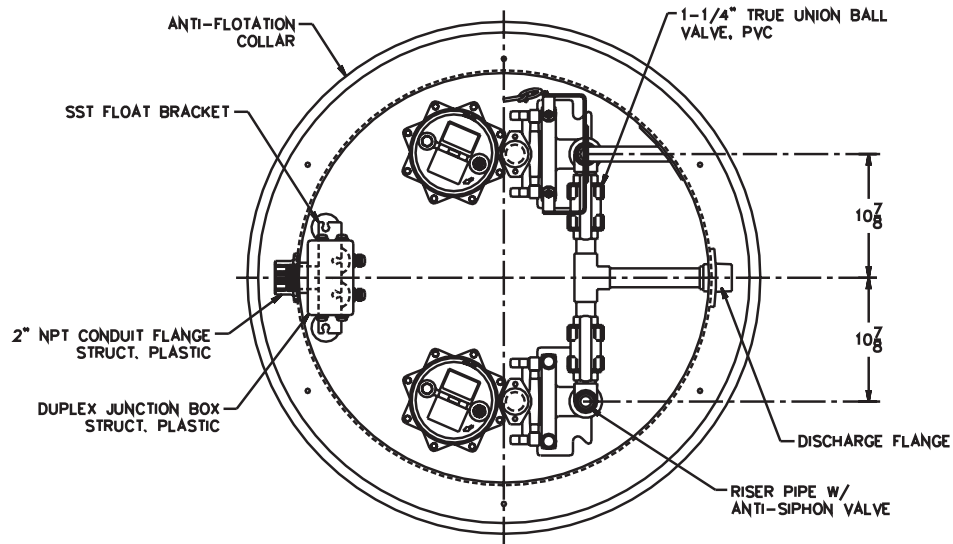
PVC Shut-Off Valve and Traditional Float Controls
Easy to operate with extended handle.

Lift-Out
Includes heavy-duty cast iron construction with SST brackets and integral ball check valve.



Brackets and Rails
Stainless steel brackets and rails ensures parts will not corrode.

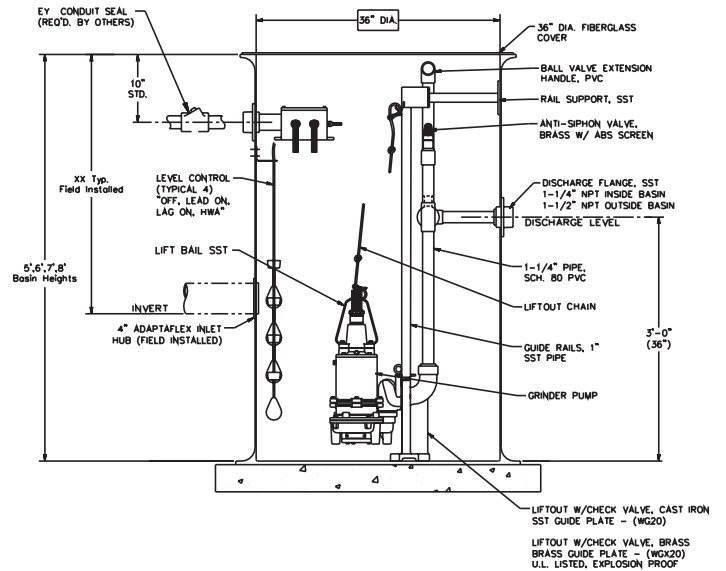
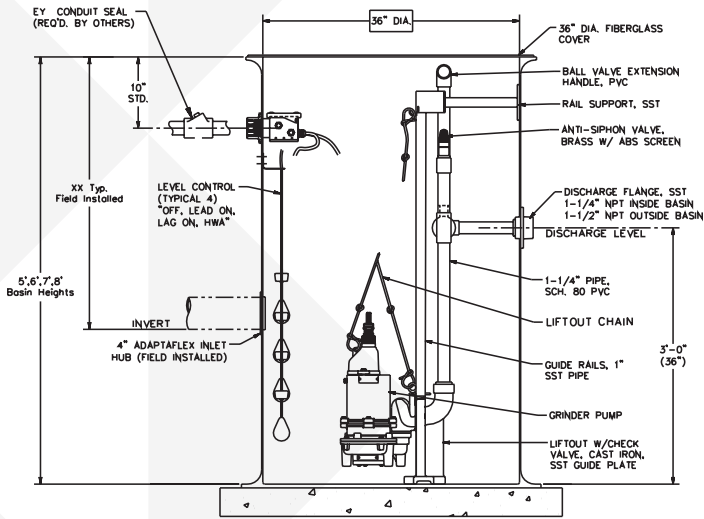
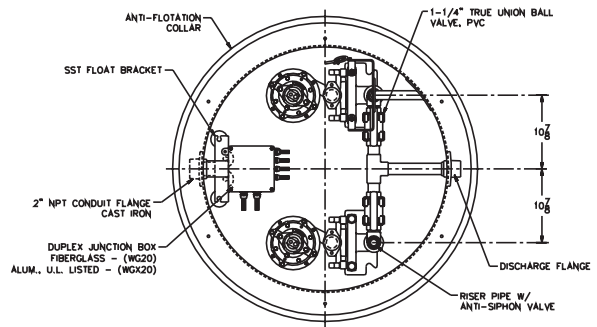
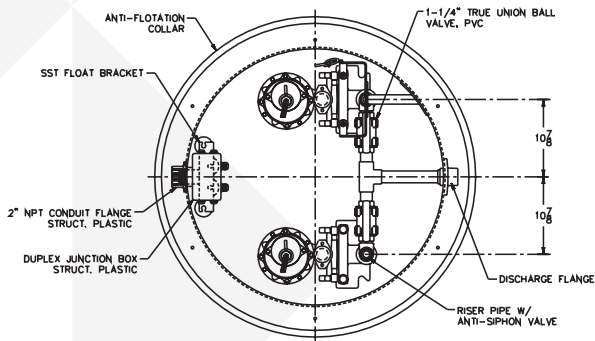
Pump: MG200
 Control: Float Pro
 Type: Duplex



MYERS® SRA-125D

Pump: WGL20
Control: Float Pro
Type: Duplex

Pump: WG/WGX20
Control: Float Pro
Type: Duplex



740 EAST 9TH STREET,
ASHLAND, OHIO 44805
WWW.FEMYERS.COM

269 TRILLIUM DRIVE, KITCHENER,
ONTARIO, CANADA N2G 4W5
WWW.FEMYERS.COM

Because we are continuously improving our products and services, Pentair reserves the right to change specifications without prior notice.
K4299 02/01/13 © 2013 Pentair Ltd. All Rights Reserved.