

BALDOR® • RELIANCE

Product Information Packet

CEM7066T-I

60//50HP,1780//1480RPM,3PH,60//50HZ,364T

Part Detail							
Revision:	G	Status:	PRD/A	Change #:		Proprietary:	No
Type:	AC	Prod. Type:	A36062M	Elec. Spec:	A36WG0794	CD Diagram:	416820-002
Enclosure:	TEFC	Mfg Plant:		Mech. Spec:		Layout:	616512-502
Frame:	364TC	Mounting:	F1	Poles:	04	Created Date:	09-27-2014
Base:		Rotation:	R	Insulation:	F	Eff. Date:	09-30-2016
Leads:	3#4,6#6					Replaced By:	
Literature:		Elec. Diagram:					

Nameplate NP2496L	
MOBIL POLYREX EM	

Nameplate 000613006PC

CLASS I GROUP	C D X
CLASS II GROUP	X X X
OPERATING TEMP CODE	T3C

Nameplate NP2293L			
CAT.NO.	CEM7066T-I	SPEC NO.	A36-5812-0794
HP	60//50	PHASE	3
RPM	1780//1480	HZ	60//50
VOLTS	230/460//190/380	DUTY	CONT
AMPS	136/67.8//137/68.7	ENCL	TEFC
DRIVE END BEARING	65BC03J30X	NEMA-NOM-EFFICIENCY	95
OPP D.E. BEARING	65BC03J30X	SER.NO.	NEMA MG-1 PT 5, IP55
	SUIT FOR 55C @ 1.00SF, SUITABLE FOR 208V		MOTOR WEIGHT
			910
			FRAME 364TC
			DESIGN B TYPE P
			AMB 40 SF 1.15
			INSUL.CLASS F
			CODE G

Parts List		
Part Number	Description	Quantity
SA290520	SA A36-5812-0794	1.000 EA
RA276675	RA A36-5812-0794	1.000 EA
421948032	LABEL, MYLAR	1.000 EA
NP2496L	MOTOR LUBE NAMEPLATE	1.000 EA
000692000VD	LABEL WARNING	1.000 EA
000613006PC	N/P U/L (REL QTY 500)	1.000 EA
NP2293L	BALDOR RELIANCE INDUST. MTR,SS,CSA-C US,	1.000 EA
609158001B	SLGR - 360	1.000 EA
603284001S	SLGR - 360	1.000 EA
087793050B	BRKT 360 087793050WCB	1.000 EA
415072001B	CLAMP	1.000 EA
078559001A	+FANCV - 360	1.000 EA
034180012DA	KEY 1X4X1/4X1-1/2 L	1.000 EA
702676001C	FAN 360 - 56 PCS	1.000 EA
004824015A	GREASE POLYREX EM	0.540 LB
032018008AK	HHCS 1/4-20X1 PLATED	4.000 EA
032018018CK	HHCS 3/8-16X2-1/4 PLTD.	2.000 EA
415096002A	CPLG 1/8 HEX TYPE	1.000 EA
415045002E	SLGR	1.000 EA
410700004F	WSHR	1.000 EA
034017016AB	LCKW 1/2" PLATED	4.000 EA
034017012AB	LCKW 1/4 STD. PLATED	4.000 EA
032130020DB	HSKCS 1/2-13X2-1/2 PLTD.	4.000 EA
034017014AB	LCKW 3/8 STD. PLATED	2.000 EA

Parts List (continued)		
Part Number	Description	Quantity
034530056AC	P/NIP 1/8X7L GALV-365	1.000 EA
034690002AB	"unbulked" PPLG 1/4" PLTD.	1.000 EA
034690002AB	"unbulked" PPLG 1/4" PLTD.	1.000 EA
087793117	BRKT B.E.C-FACE 360 FCXP 6313 W/ 1/4"	1.000 EA
032018018CK	HHCS 3/8-16X2-1/4 PLTD.	2.000 EA
415045002E	SLGR	1.000 EA
034017016AB	LCKW 1/2" PLATED	4.000 EA
034017014AB	LCKW 3/8 STD. PLATED	2.000 EA
402558000DDA	BRDRN	1.000 EA
032130020DB	HSCHS 1/2-13X2-1/2 PLTD.	4.000 EA
16CB1001A01	CONDUIT BOX MACH. GROUP C MTRS	1.000 EA
16CB1501A01	CONDUIT BOX LID MACH.GRP C MTRS 16CB1501	1.000 EA
418150003A	GREASE FITTING CAP	1.000 EA
032130012EB	HSCHS 5/8-11X1-1/2 PLTD.	8.000 EA
034017018AB	LCKW 5/8"	8.000 EA
035000001A	ALFTG 1/8" 1610-BL	1.000 EA
WD1000B92	T&B TTC2, GROUND CONNECTOR	1.000 EA
406099000A	PLUG - FAN COVER 320-440	1.000 EA
032130014CB	HSCHS 3/8-16X1-3/4 PLTD.	4.000 EA
034017014AB	LCKW 3/8 STD. PLATED	4.000 EA
406055001C	GRFTG	1.000 EA
035000001A	ALFTG 1/8" 1610-BL	1.000 EA
418150003A	GREASE FITTING CAP	1.000 EA
MG1025N19	WILKO 778.50 BLUE GREEN - 55 GAL DRUMS	0.250 GA

Product Information Packet: CEM7066T-I - 60//50HP,1780//1480RPM,3PH,60//50HZ,364T

033775004EA	DRSCR #6-1/4 304 S.S.	8.000 EA
034180034HA	KEY 5/8X5/8X4-1/4 L	1.000 EA
HW1000A32	5/16 FL WASHER WIDE,ID=.344,OD=1.125	3.000 EA
032509020C	CARRIAGE BOLT - 360	3.000 EA
14PA1000	PACKAGING 314 GROUP COMBINED PRINT	1.000 EA
LB1073	ALUM XP CAUTION LABEL	1.000 EA

REL. S.O.	FRAME	HP	TYPE	PHASE/HERTZ	RPM	VOLTS
	364TC	60	P	3/60	1780	230/460
AMPS	DUTY	AMB °C/INSUL.	S.F.	NEMA DESIGN	CODE LETTER	ENCL.
136/67.8	CONT	40/F	1.15	B	G	FCXE
E/S	ROTOR	TEST S.O.	TEST DATE	STATOR RES. @25 °C OHMS (BETWEEN LINES)		
491317	418141035YE	---	---	.0266/.106		

PERFORMANCE

LOAD	HP	AMPERES	RPM	POWER FACTOR %	EFFICIENCY %
NO LOAD	0	21.8	1800	4.07	0
1/4	15.0	27.0	1796	55.8	93.3
2/4	30.0	38.4	1791	76.6	95.4
3/4	45.0	52.4	1786	84.2	95.5
4/4	60.0	67.8	1781	87.0	95.2
5/4	75.0	84.6	1776	87.8	94.6

SPEED TORQUE

	RPM	TORQUE % FULL LOAD	TORQUE LB.-FT.	AMPERES
LOCKED ROTOR	0	185	327	432
PULL UP	270	155	274	399
BREAKDOWN	1709	251	444	246
FULL LOAD	1781	100	177	67.8

AMPERES SHOWN FOR 460. VOLT CONNECTION. IF OTHER VOLTAGE CONNECTIONS ARE AVAILABLE, THE AMPERES WILL VARY INVERSELY WITH THE RATED VOLTAGE

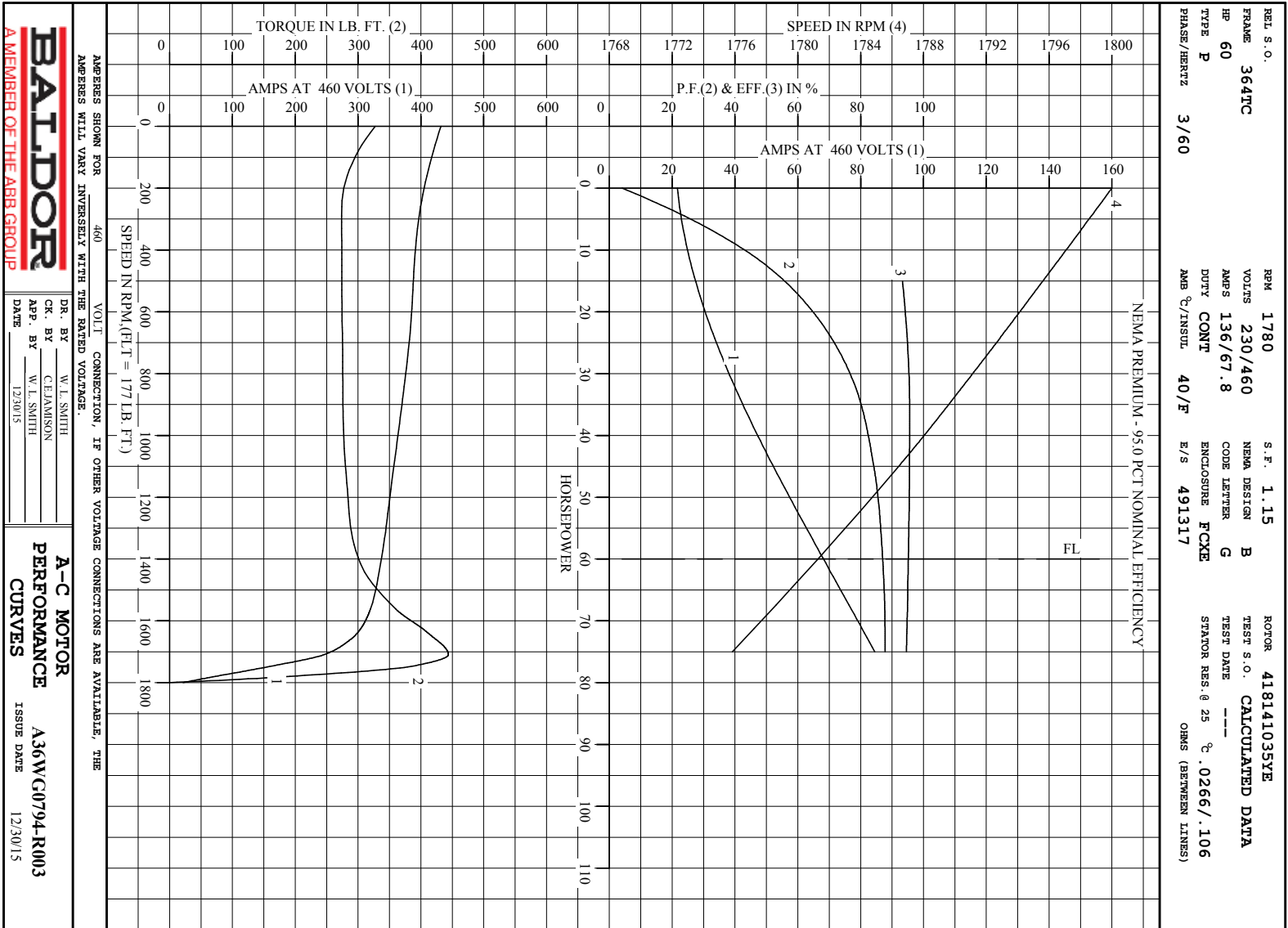
REMARKS: CALCULATED DATA
NEMA PREMIUM - 95.0 PCT NOMINAL EFFICIENCY



A MEMBER OF THE ABB GROUP

DR. BY W. L. SMITH
CR. BY C.E. JAMISON
APP. BY W. L. SMITH
DATE 12/30/15

A-C MOTOR
PERFORMANCE DATA
A36WG0794-R003
ISSUE DATE 12/30/15



AMPERES SHOWN FOR 460 VOLT CONNECTION, IF OTHER VOLTAGE CONNECTIONS ARE AVAILABLE, THE AMPERES WILL VARY INVERSELY WITH THE RATED VOLTAGE.

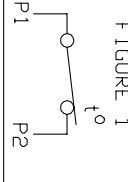
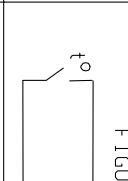
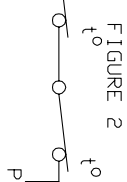
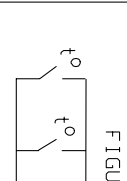
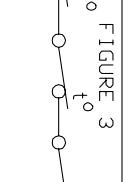
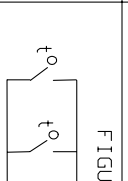
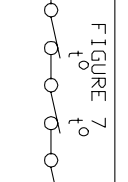
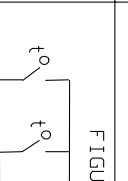
DR. BY W. L. SMITH
 CK. BY C. E. JAMISON
 APP. BY W. L. SMITH
 DATE 12/30/15

A-C MOTOR PERFORMANCE CURVES
 A36W00794-R003
 ISSUE DATE 12/30/15

Printed on 12/30/15 7:38 @ bengap01.baldor.com

CONNECTION DIAGRAM ACCESSORIES

MOTOR WINDING THERMOSTATS	
CONTACTS _____ @ _____ °C	
FIGURE NUMBER _____	
CONTACT RATING	
VOLTS	CONTACT RATING CONTINUOUS AMPERES
110-120	3.0
220-240	1.5
440-480	0.75
550-600	0.60
	INRUSH AMPERES
	30
	15
	7.5
	6.0

NORMALLY CLOSED	THERMOSTATS	NORMALLY OPEN
 <p>FIGURE 1</p>		 <p>FIGURE 4</p>
 <p>FIGURE 2</p>		 <p>FIGURE 5</p>
 <p>FIGURE 3</p>		 <p>FIGURE 6</p>
 <p>FIGURE 7</p>		 <p>FIGURE 8</p>

CUSTOMER _____ CUSTOMER ORDER NO. _____ S.D. NO. _____

418174-006

418174-006

REV. DESC: LOADED TO BUS		TDR: 000000570390
REV. LTR: A	VERSION: 01	BY: RAGDRF
FILE: \RAG\00013\849	REVISED: 10:16:21 12/07/2010	
MTL: -		

BALDOR

A-C MOTOR CONNECTION ACCESSORIES

SH 1 of 1

Marketing maintained PDF of MN408:

<http://www.baldor.com/support/Literature/Load.ashx/MN408?ManNumber=MN408>

Marketing maintained PDF of MN416:

<http://www.baldor.com/support/Literature/Load.ashx/MN416?ManNumber=MN416>