

BALDOR® • ***RELIANCE***

Product Information Packet

CJL3501A

.33HP,1725RPM,1PH,60HZ,56J,3414L,TEFC,F1

| Part Detail | | | | | | | |
|-------------|------|----------------|-------|-------------|----------|---------------|------------|
| Revision: | V | Status: | PRD/A | Change #: | | Proprietary: | No |
| Type: | AC | Prod. Type: | 3414L | Elec. Spec: | 34WG5597 | CD Diagram: | CD0094 |
| Enclosure: | TEFC | Mfg Plant: | | Mech. Spec: | 34L052 | Layout: | 34LYL052 |
| Frame: | 56J | Mounting: | F1 | Poles: | 04 | Created Date: | |
| Base: | RG | Rotation: | FOS | Insulation: | B | Eff. Date: | 07-06-2015 |
| Leads: | 5#18 | | | | | Replaced By: | |
| Literature: | | Elec. Diagram: | | | | | |

| Nameplate NP1257L | |
|-------------------|--------------------|
| CAT.NO. | CJL3501A |
| SPEC. | 34L52-5597 |
| HP | .33 |
| VOLTS | 115/230 |
| AMP | 6/3 |
| RPM | 1725 |
| FRAME | 56J |
| SER.F. | 1.35 |
| NEMA-NOM-EFF | 60 |
| RATING | 40C AMB-CONT |
| CC | |
| DE | 6203 |
| ENCL | TEFC |
| | SFA 6.8/3.4 |
| | CODE L |
| | DES N |
| | CL B |
| | PF 60 |
| | HZ 60 |
| | PH 1 |
| | USABLE AT 208V 3.6 |
| | ODE 6203 |
| | SN |

| Parts List | | |
|---------------|--|----------|
| Part Number | Description | Quantity |
| SA007938 | SA 34L52-5597 | 1.000 EA |
| RA004385 | RA 34L52-5597 | 1.000 EA |
| EC1189A02SP | 61B2D120189NNBA ELEC CAP, 189-227MFD, 12 | 1.000 EA |
| NS2512A01 | INSULATOR, CONDUIT BOX X | 1.000 EA |
| 34CB3002A | CB CAST W/.88 DIA HOLE | 1.000 EA |
| 34GS1029A01 | GASKET, CONDUIT BOX | 1.000 EA |
| 51XB1016A07 | 10-16 X 7/16 HXWSSLD SERTYB | 2.000 EA |
| 11XW1032G06 | 10-32 X .38, TAPTITE II, HEX WSHR SLTD U | 1.000 EA |
| 51XW0832A07 | 8-32 X .44, TAPTITE II, HEX WSHR SLTD SE | 2.000 EA |
| 34EP3102A01SP | FR ENDPLATE, MACH | 1.000 EA |
| NS2500A01 | INSULATOR, AUTO THER PROT | 1.000 EA |
| 34CB4800SP | CAPACITOR COVER, STAMPED PRIMED | 1.000 EA |
| 34GS3000SP | GASKET, CAPACITOR BOX | 1.000 EA |
| 51XB1016A05 | 10-16X5/16HX WA SL SR TYB (F/S) | 2.000 EA |
| HW5100A03SP | WAVY WASHER (W1543-017) | 1.000 EA |
| 34EP3300A24SP | PU ENDPLATE, MACH | 1.000 EA |
| 51XN1032A20 | 10-32 X 1 1/4 HX WS SL SR | 2.000 EA |
| 34FN3002A01SP | EXTERNAL FAN, PLASTIC, .637/.639 HUB W/ | 1.000 EA |
| 34FH4002A03SP | IEC FH NO GREASER W/.88 DIA SHAFT HOLE, | 1.000 EA |
| 51XW1032A06 | 10-32 X .38, TAPTITE II, HEX WSHR SLTD S | 3.000 EA |
| WD4100A81 | CAPLUG BPF-7/8, FOR .86-.88 HOLE | 1.000 EA |
| 34CB4517 | CB LID 4 MTG HOLES .22 DIA STAMPED, FOR | 1.000 EA |
| 34GS1031A01 | GASKET, FLAT CONDUIT BOX LID (LEXIDE) | 1.000 EA |
| 51XW0832A07 | 8-32 X .44, TAPTITE II, HEX WSHR SLTD SE | 4.000 EA |

| Parts List (continued) | | |
|-------------------------------|--|-----------------|
| Part Number | Description | Quantity |
| RM1010A01 | 35-968-1 VINYL CLS | 1.000 EA |
| WD1000A16 | 2-520128-2 AMP FLAG TERMINAL(4M/RL) | 2.000 EA |
| MG1000G27 | MED CHARCOAL METALLIC GREY 400-0096 | 0.014 GA |
| 10XF0440S02 | 04-40 X 1/8 TYPE F HEX HD STAINLESS STIC | 2.000 EA |
| SP5056A26 | MODEL 34 TYPE L STAT SWITCH W/LEADS | 1.000 EA |
| HA3100A12 | THRUBOLT 10-32 X 7.375 | 4.000 EA |
| LB1118 | LABEL,WARNING (ROLL LABEL) | 1.000 EA |
| LC0031 | CONNECTION LABEL | 1.000 EA |
| NP1257L | ALUM UL CSA CC THERMAL REV MTG | 1.000 EA |
| MN416A01 | TAG-INSTAL-MAINT no wire (1200/bx) 11/14 | 1.000 EA |
| 35PA1000 | PKG GRP, PRINT PK1008A06 | 1.000 EA |

| Accessories | | |
|--------------------|--------------------|-------------------|
| Part Number | Description | Multiplier |
| 34-171 | C FACE KIT | A8 |

AC Induction Motor Performance Data
Record # 6784 - Typical performance - not guaranteed values

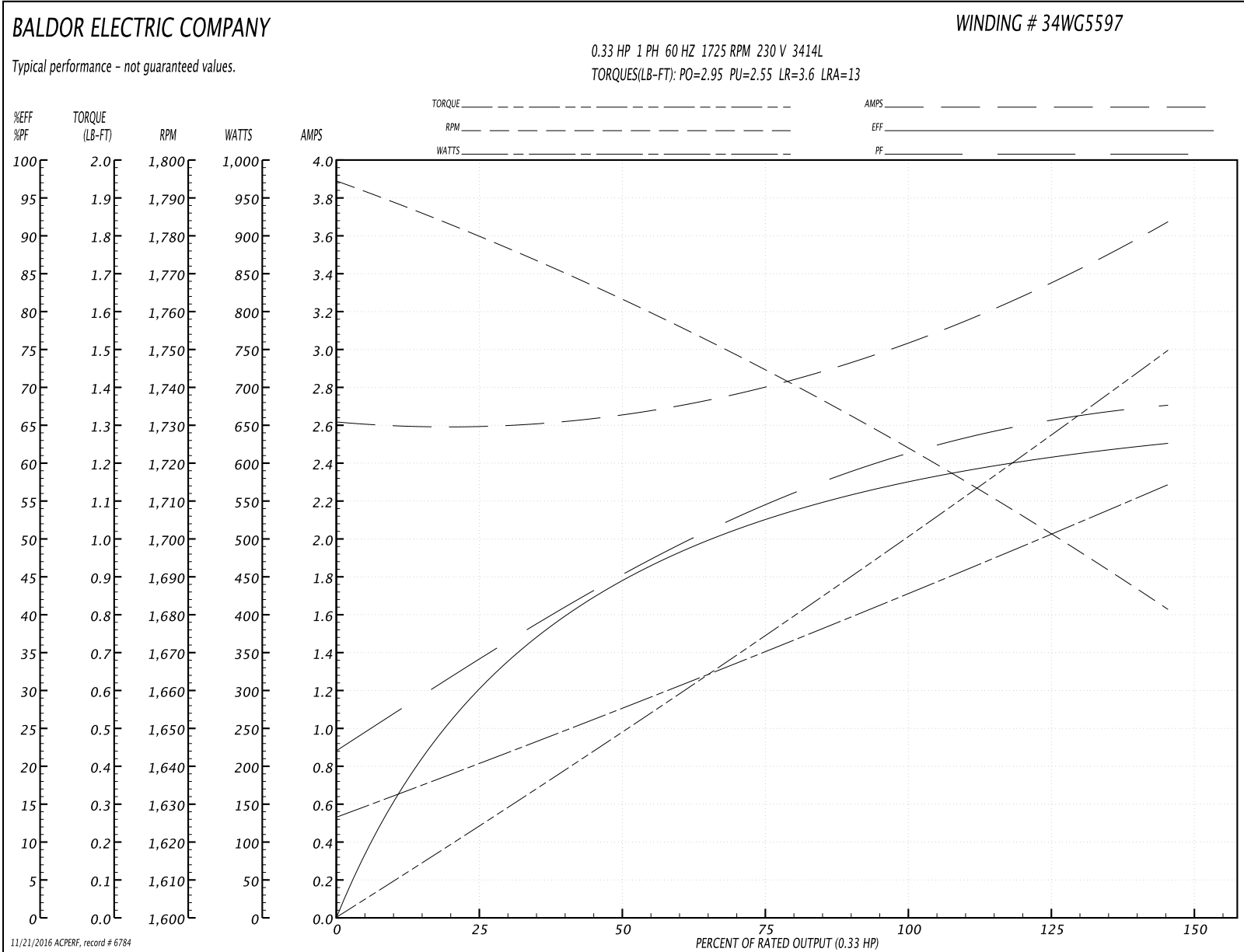
| | | |
|-------------------------------|--------------------|------------------------|
| Winding: 34WG5597-R001 | Type: 3414L | Enclosure: TEFC |
|-------------------------------|--------------------|------------------------|

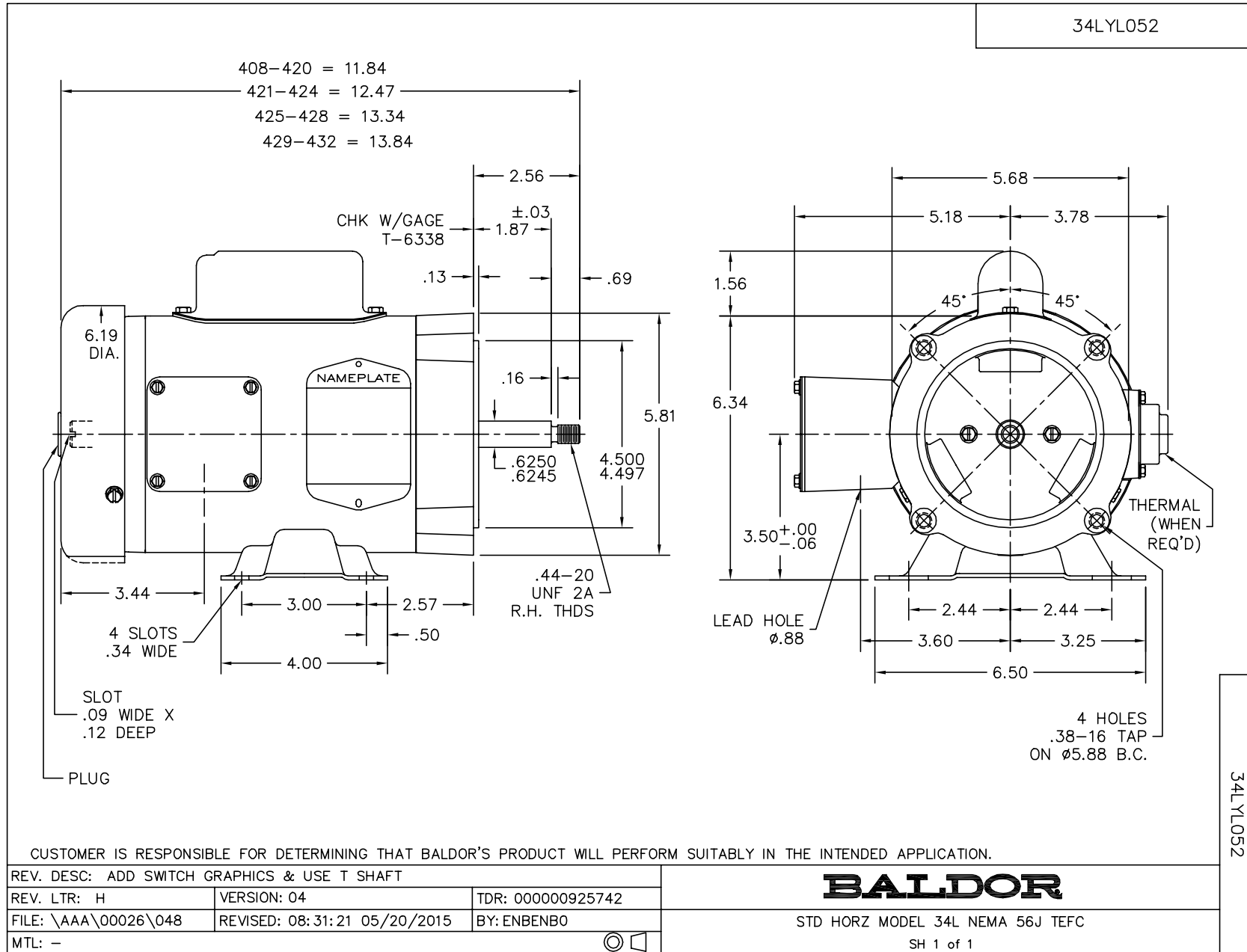
| Nameplate Data | | | | 230 V, 60 Hz: High Voltage Connection | |
|-----------------------|--------------|--------------|----|--|----------------------------|
| Rated Output (HP) | .33 | | | Full Load Torque | 1 LB-FT |
| Volts | 115/230 | | | Start Configuration | direct on line |
| Full Load Amps | 6/3 | | | Breakdown Torque | 2.95 LB-FT |
| R.P.M. | 1725 | | | Pull-up Torque | 2.55 LB-FT |
| Hz | 60 | Phase | 1 | Locked-rotor Torque | 3.6 LB-FT |
| NEMA Design Code | N | KVA Code | L | Starting Current | 13 A |
| Service Factor (S.F.) | 1.35 | | | No-load Current | 2.6 A |
| NEMA Nom. Eff. | 60 | Power Factor | 60 | Line-line Res. @ 25°C | 6.32 Ω A Ph 4.93 Ω B Ph |
| Rating - Duty | 40C AMB-CONT | | | Temp. Rise @ Rated Load | 59°C |
| S.F. Amps | 6.8/3.4 | | | Temp. Rise @ S.F. Load | 73°C |

Load Characteristics 230 V, 60 Hz, 0.33 HP

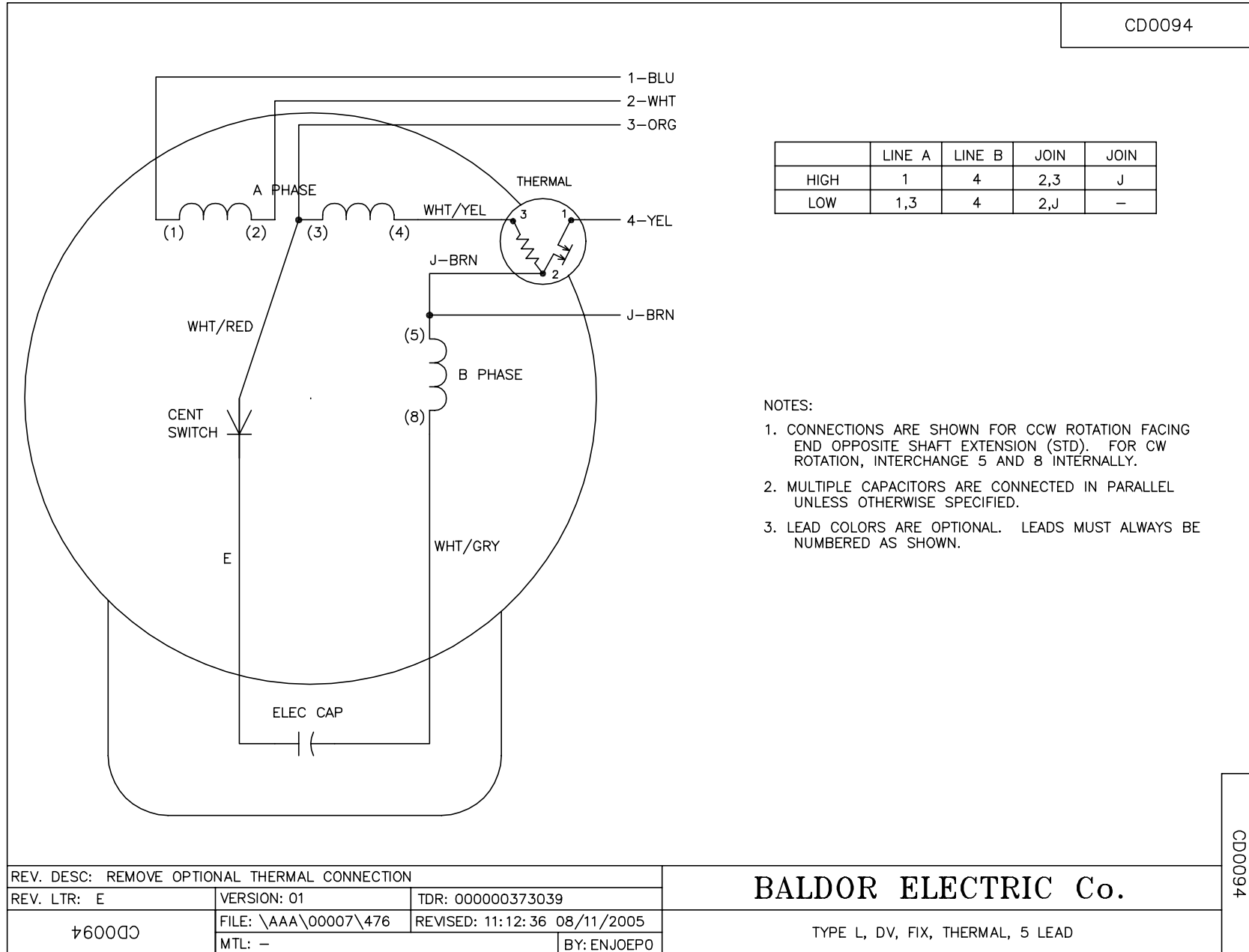
| % of Rated Load | 25 | 50 | 75 | 100 | 125 | 150 | S.F. |
|-----------------|------|------|------|------|------|------|------|
| Power Factor | 31 | 41 | 52 | 60 | 67 | 73 | 71 |
| Efficiency | 33 | 41 | 52 | 60 | 61.5 | 61.5 | 61.5 |
| Speed | 1780 | 1760 | 1745 | 1725 | 1705 | 1680 | 1690 |
| Line amperes | 2.6 | 2.7 | 2.8 | 3 | 3.3 | 3.7 | 3.4 |

Performance Graph at 230V, 60Hz, 0.33HP Typical performance - Not guaranteed values





CD0094



| | LINE A | LINE B | JOIN | JOIN |
|------|--------|--------|------|------|
| HIGH | 1 | 4 | 2,3 | J |
| LOW | 1,3 | 4 | 2,J | - |

NOTES:

1. CONNECTIONS ARE SHOWN FOR CCW ROTATION FACING END OPPOSITE SHAFT EXTENSION (STD). FOR CW ROTATION, INTERCHANGE 5 AND 8 INTERNALLY.
2. MULTIPLE CAPACITORS ARE CONNECTED IN PARALLEL UNLESS OTHERWISE SPECIFIED.
3. LEAD COLORS ARE OPTIONAL. LEADS MUST ALWAYS BE NUMBERED AS SHOWN.

CD0094

| | | | |
|---|----------------------|------------------------------|--|
| REV. DESC: REMOVE OPTIONAL THERMAL CONNECTION | | | |
| REV. LTR: E | VERSION: 01 | TDR: 000000373039 | |
| CD0094 | FILE: \AAA\00007\476 | REVISED: 11:12:36 08/11/2005 | |
| | MTL: - | BY: ENJOEPO | |

BALDOR ELECTRIC Co.

TYPE L, DV, FIX, THERMAL, 5 LEAD