

BALDOR® • *RELIANCE*

Product Information Packet

ECTM3665T

5 AIR OVERHP,1750RPM,3PH,60HZ,184T,0641M

| Part Detail | | | | | | | |
|-------------|------|----------------|-------|-------------|----------|---------------|------------|
| Revision: | C | Status: | PRD/A | Change #: | | Proprietary: | No |
| Type: | AC | Prod. Type: | 0642M | Elec. Spec: | 06WGX182 | CD Diagram: | CD0005 |
| Enclosure: | TEAO | Mfg Plant: | | Mech. Spec: | 06K700 | Layout: | 06LYK700 |
| Frame: | 184T | Mounting: | F1 | Poles: | 04 | Created Date: | 08-14-2015 |
| Base: | RG | Rotation: | R | Insulation: | F | Eff. Date: | 04-08-2016 |
| Leads: | 9#16 | | | | | Replaced By: | |
| Literature: | | Elec. Diagram: | | | | | |

| Parts List | | |
|--------------|--|----------|
| Part Number | Description | Quantity |
| SA305964 | SA 06K700X182G1 | 1.000 EA |
| RA293198 | RA 06K700X182G1 | 1.000 EA |
| HW3201A05 | 3/8-16 EYEBOLT | 1.000 EA |
| HW3201A05 | 3/8-16 EYEBOLT | 1.000 EA |
| 06CB1000A67G | .75 NPT @ 6:00 & GRD HOLE, 2 .125 N.P.T. | 1.000 EA |
| RM1016 | LEAD SEPARATOR GASKET - 305/306 C.P.MOTO | 1.000 EA |
| 51XW2520A12 | SCREW, HEX SER SLT HD, ZN, 1/4-20 X .75 | 2.000 EA |
| 11XW1032G06 | 10-32 X .38, TAPTITE II, HEX WSHR SLTD U | 1.000 EA |
| HW3001B01 | BRASS CUP WASHER, FOR #8 SCREW | 1.000 EA |
| HA4044A00 | PLUG,PIPE 1/8 NPT PLASTIC SQUARE HEAD | 2.000 EA |
| 10XN2520G06 | 1/4 20X3/8 HX HD CAP, GREEN | 2.000 EA |
| WD1000B16 | T&B CX70TN TERMINAL | 2.000 EA |
| 36EP1101C25G | FREP, 205 BRG,.125 NPT (GRAY) | 1.000 EA |
| HA4054 | SHORT T-DRAIN FITTING, .125" N.P.T. | 1.000 EA |
| 80XN3816A04 | 3/8-16 X 1/4 SET SCREW | 2.000 EA |
| HW5100A05 | WVY WSHR F/205 & 304 BRGS | 1.000 EA |
| 36EP1100D66G | PUEP, 206 LOCK BRG,.125 NPT (GRAY) | 1.000 EA |
| HW4600B50SP | SEAL 1.156 X 1.874 X 0.250 SINGLE LIP DB | 1.000 EA |
| HA4054 | SHORT T-DRAIN FITTING, .125" N.P.T. | 1.000 EA |
| HA4044A00 | PLUG,PIPE 1/8 NPT PLASTIC SQUARE HEAD | 2.000 EA |
| 51XN1032A16 | 10-32 X 1.000 HX WS SL SR | 2.000 EA |
| HA3101A53 | THRUBOLT 1/4-20 X 10.50 | 4.000 EA |
| XY2520A12 | 1/4-20 HEX NUT, DIRECTIONAL SERRATIONS | 4.000 EA |
| 06CB1502A01G | LIPPED CONDUIT BOX LID, MACH GRAY EPOXY | 1.000 EA |

| Parts List (continued) | | |
|-------------------------------|--|-----------------|
| Part Number | Description | Quantity |
| 06GS1003 | GASKET, KOBX LID, 1/8" THICK BLACK NEOPR | 1.000 EA |
| 10XN2520A12 | O1/4-20X 3/4 HEX HEAD CAP | 2.000 EA |
| HW1001A25 | LOCKWASHER 1/4, ZINC PLT .493 OD, .255 I | 2.000 EA |
| HW2501E16 | 3KEY, 1/4 SQ X 1.750 | 1.000 EA |
| HA7000A02 | KEY RETAINER RING, 1 1/8 DIA, 1 3/8 DIA | 1.000 EA |
| HW4600G50 | DOME SLINGER, 4.25 OD X 1.120/1.085 ID | 1.000 EA |
| MJ5001A27 | 32220KN GRAY SEALER *MIN BUY 4 QTS=1GAL | 0.001 QT |
| 85XU0407S04 | 4X1/4 U DRIVE PIN STAINLESS | 2.000 EA |
| LB1115N | LABEL,LIFTING DEVICE (ON ROLLS) | 1.000 EA |
| LB1182 | WARNING LABEL FOR MOTORS WITH EYENUTS | 1.000 EA |
| MJ1000A02 | GREASE, POLYREX EM EXXON (USe 4824-15A) | 0.050 LB |
| MG1025G29 | WILKOFASST, 789.229, DARK CHARCOAL GRAY | 0.028 GA |
| LC0005E01 | CONN.DIA./WARNING LABEL (LC0005/LB1119N) | 1.000 EA |
| NP1260E | SS CP SUPER-E UL CSA CC | 1.000 EA |
| 36PA1001 | PKG GRP, PRINT PK1017A06 | 1.000 EA |
| MN416A01 | TAG-INSTAL-MAINT no wire (1000/bx) 11/14 | 1.000 EA |
| LB1417 | LABEL CARTON 6X4 PERFORATED BLANK ROLLS | 1.000 EA |

AC Induction Motor Performance Data

Record # 35543 - Typical performance - not guaranteed values

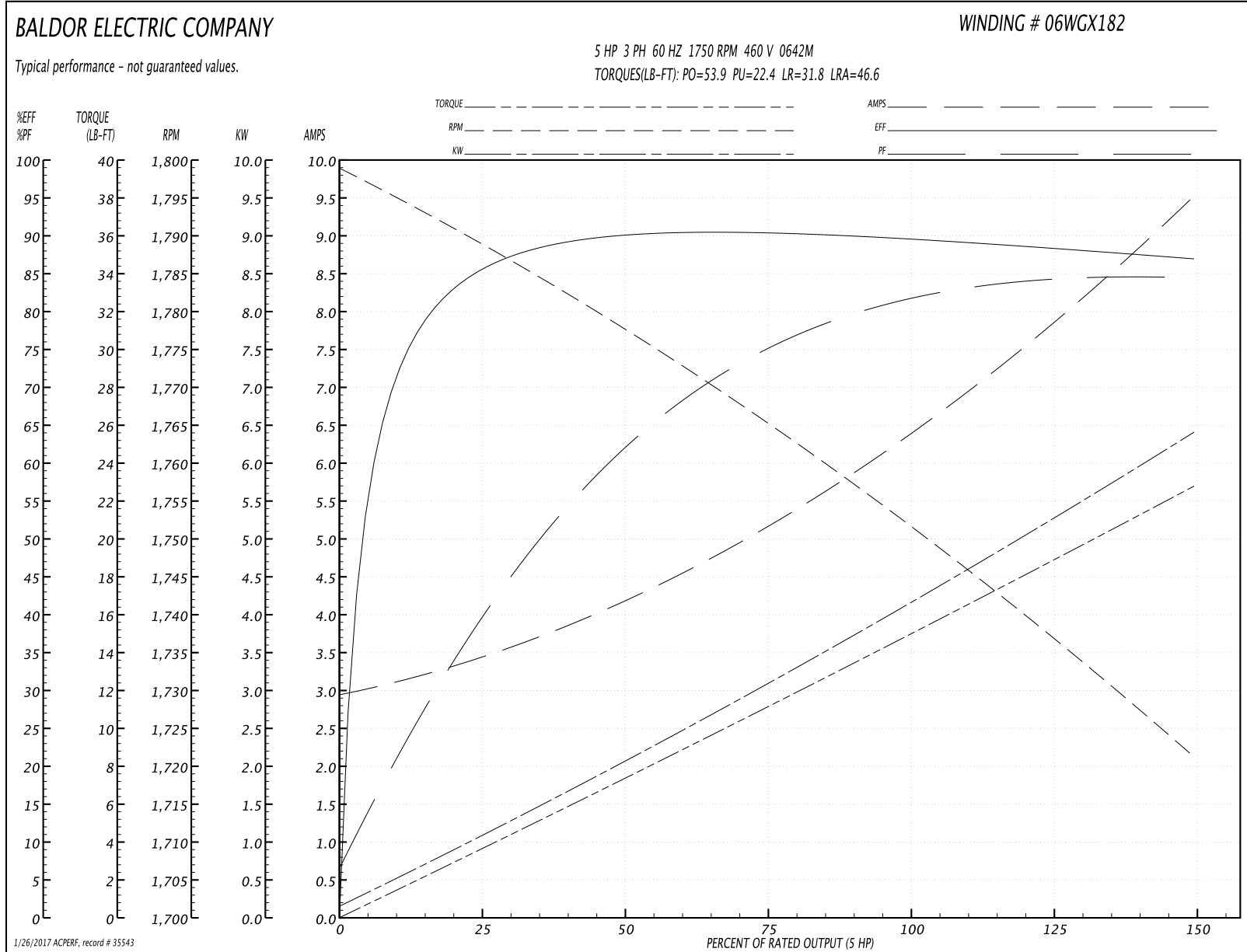
| | | |
|-------------------------------|--------------------|------------------------|
| Winding: 06WGX182-R003 | Type: 0642M | Enclosure: TEFC |
|-------------------------------|--------------------|------------------------|

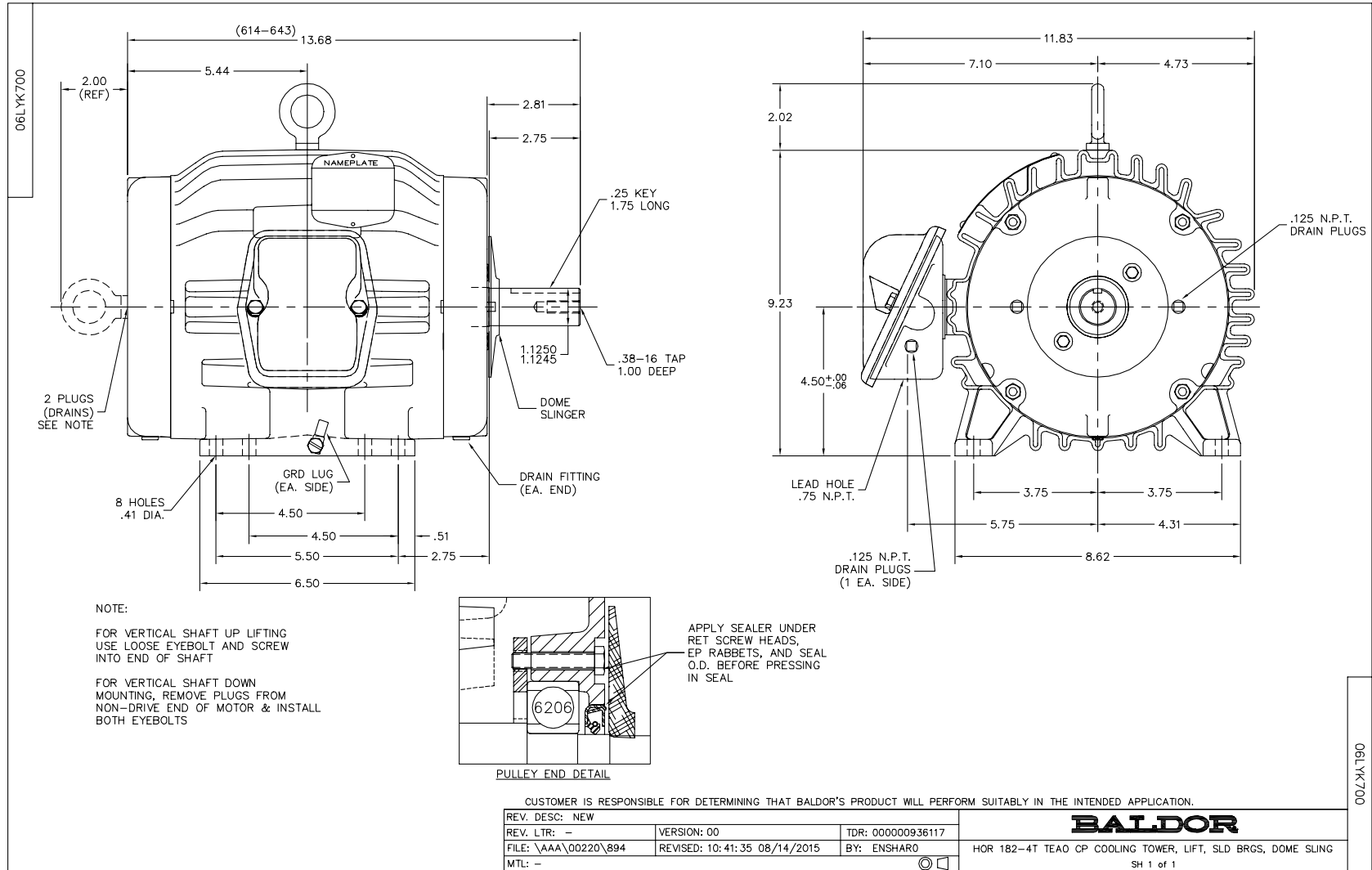
| Nameplate Data | | | | 460 V, 60 Hz: High Voltage Connection | |
|-----------------------|--------------|--------------|----|--|--------------------------|
| Rated Output (HP) | 5 AIR OVER | | | Full Load Torque | 15 LB-FT |
| Volts | 208-230/460 | | | Start Configuration | direct on line |
| Full Load Amps | 14-13.2/6.6 | | | Breakdown Torque | 53.9 LB-FT |
| R.P.M. | 1750 | | | Pull-up Torque | 22.4 LB-FT |
| Hz | 60 | Phase | 3 | Locked-rotor Torque | 31.8 LB-FT |
| NEMA Design Code | B | KVA Code | J | Starting Current | 46.6 A |
| Service Factor (S.F.) | 1.15 | | | No-load Current | 3.02 A |
| NEMA Nom. Eff. | 89.5 | Power Factor | 79 | Line-line Res. @ 25°C | 2.63 Ω |
| Rating - Duty | 40C AMB-CONT | | | Temp. Rise @ Rated Load | |
| | | | | Locked-rotor Power Factor | 40.5 |
| | | | | Rotor inertia | 0.391 LB-FT ² |

Load Characteristics 460 V, 60 Hz, 5 HP

| % of Rated Load | 25 | 50 | 75 | 100 | 125 | 150 | S.F. |
|-----------------|------|------|------|------|------|------|------|
| Power Factor | 41 | 63 | 75 | 81 | 84 | 85 | 81 |
| Efficiency | 85.2 | 89.8 | 90.4 | 89.8 | 88.4 | 86.9 | 88.6 |
| Speed | 1789 | 1777 | 1765 | 1752 | 1737 | 1721 | 1739 |
| Line amperes | 3.35 | 4.14 | 5.21 | 6.45 | 7.91 | 9.47 | 7.52 |

Performance Graph at 460V, 60Hz, 5.0HP Typical performance - Not guaranteed values





CD0005

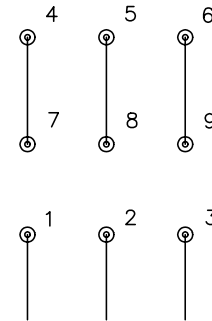


LOW VOLTAGE
(2Y)



LINE

HIGH VOLTAGE
(1Y)



LINE

NOTES:

1. INTERCHANGE ANY TWO LINE LEADS TO REVERSE ROTATION.
2. OPTIONAL THERMOSTATS ARE PROVIDED WHEN SPECIFIED.
3. ACTUAL NUMBER OF INTERNAL PARALLEL CIRCUITS MAY BE A MULTIPLE OF THOSE SHOWN ABOVE.
4. LEAD COLORS ARE OPTIONAL. LEADS MUST ALWAYS BE NUMBERED AS SHOWN.

| | | | |
|---|---------|-------------------------|--------------|
| REV. DESC: REVISE TO SHOW OPTIONAL COLORS | | | |
| REV. LTR: E | BY: JLP | REVISED: 01/19/99 10:15 | TDR: 0171435 |
| 90000 | | FILE: AAA00005140 | MDL: - |
| | | MTL: - | |

BALDOR ELECTRIC Co.

3PH, DV, 9 LEADS

CD0005