

BALDOR® • ***RELIANCE***

Product Information Packet

EM2572T-4

350HP,1780RPM,3PH,60HZ,449T,DP,F1

| Part Detail | | | | | | | |
|-------------|--------------------|----------------|---------|-------------|-----------|---------------|------------|
| Revision: | - | Status: | PRD/A | Change #: | | Proprietary: | No |
| Type: | AC | Prod. Type: | A44128M | Elec. Spec: | A44WG3196 | CD Diagram: | 416820-008 |
| Enclosure: | DP | Mfg Plant: | | Mech. Spec: | | Layout: | 604989-505 |
| Frame: | 449T | Mounting: | F1 | Poles: | 04 | Created Date: | 11-25-2015 |
| Base: | | Rotation: | R | Insulation: | B | Eff. Date: | 12-04-2015 |
| Leads: | 6#2 (02 per group) | | | | | Replaced By: | |
| Literature: | | Elec. Diagram: | | | | | |

Nameplate NP2496L

MOBIL POLYREX EM

| Nameplate NP2349L | | | | | | | | | |
|-------------------|---------------|--------------|-----------|-------------------------|------|-----------------------|------|------|------|
| SPEC NO. | A44-8066-3196 | CAT.NO. | EM2572T-4 | FRAME | 449T | | | | |
| HP | 350 | VOLTS | 460 | PHASE | 3 | DESIGN | B | TYPE | P |
| RPM | 1780 | AMPS | 382 | HZ | 60 | AMB | 40 | SF | 1.15 |
| DRIVE END BEARING | 90BC03J30X | DUTY | CONT | INSUL.CLASS | F | | | | |
| OPP D.E. BEARING | 90BC03J30X | ENCL | DP | CODE | F | | | | |
| SER.NO. | | POWER FACTOR | 89 | NEMA-NOM-EFFICIENCY | 96.2 | | | | |
| | | | | MAX CORR KVAR | 48 | GUARANTEED EFFICIENCY | 95.4 | | |
| | | | | NEMA NOM/CSA QUOTED EFF | | | | | |
| | | | | MOTOR WEIGHT | 2694 | | | | |

| Parts List | | |
|-------------|---------------------------------------|----------|
| Part Number | Description | Quantity |
| SA310926 | SA A44-8066-3196 | 1.000 EA |
| RA298332 | RA A44-8066-3196 | 1.000 EA |
| 421948044 | LABEL, MYLAR | 1.000 EA |
| NP2496L | MOTOR LUBE NAMEPLATE | 1.000 EA |
| 000613006PU | N/P (RELEASE QTY 10,000) UL CSA LABEL | 1.000 EA |
| 000692000FF | N/P | 1.000 EA |
| 000692000VD | LABEL WARNING | 1.000 EA |
| NP2349L | SUPER-E ,SS, CSA, CSA SUPER-E | 1.000 EA |
| 702611001A | BAFFL 440 SUB PAINT | 1.000 EA |
| 089439051A | BRKT 440 089439051WCB | 1.000 EA |
| 004824015A | GREASE POLYREX EM | 1.160 LB |
| 032018028EK | HHCS 5/8-11X3-1/2L PLTD | 4.000 EA |
| 032018036DK | HHCS 1/2-13X4-1/2 PLTD. | 3.000 EA |
| 410700004A | WSHR | 1.000 EA |
| 035000001G | GREASE RELIEF FITTING, ALEMITE 317400 | 1.000 EA |
| 034017012AB | LCKW 1/4 STD. PLATED | 4.000 EA |
| 405851012AD | SPACE | 4.000 EA |
| 032018010AK | HHCS 1/4-20X1-1/4L PLTD. | 4.000 EA |
| 034000012AB | WSHR 1/4 STD. PLATED | 4.000 EA |
| 034600001AA | BUSH 1/4TO1/8 BLACK | 1.000 EA |
| 418151014G | RETAIN RING | 1.000 EA |
| 405851012AD | SPACE | 4.000 EA |
| 034017012AB | LCKW 1/4 STD. PLATED | 4.000 EA |
| 034600001AA | BUSH 1/4TO1/8 BLACK | 1.000 EA |

| Parts List (continued) | | |
|-------------------------------|---------------------------------------|-----------------|
| Part Number | Description | Quantity |
| 034000012AB | WSHR 1/4 STD. PLATED | 4.000 EA |
| 032018010AK | HHCS 1/4-20X1-1/4L PLTD. | 4.000 EA |
| 089439051A | BRKT 440 089439051WCB | 1.000 EA |
| 702611001A | BAFFL 440 SUB PAINT | 1.000 EA |
| 032018028EK | HHCS 5/8-11X3-1/2L PLTD | 4.000 EA |
| 032018036DK | HHCS 1/2-13X4-1/2 PLTD. | 3.000 EA |
| 035000001G | GREASE RELIEF FITTING, ALEMITE 317400 | 1.000 EA |
| 406056008A | GASKET, TERBD 440 | 1.000 EA |
| 418150003A | GREASE FITTING CAP | 1.000 EA |
| 032018008DK | HHCS 1/2-13X1 PLATED | 4.000 EA |
| 048897010DJ | BUSH - 445 | 1.000 EA |
| 702616012T | CONDUIT BOX | 1.000 EA |
| 035000001A | ALFTG 1/8" 1610-BL | 1.000 EA |
| 035000001A | ALFTG 1/8" 1610-BL | 1.000 EA |
| 418150003A | GREASE FITTING CAP | 1.000 EA |
| MG1025Y03 | WILKOFAS, 789.701, SUPER E PEARL GOLD | 2.000 QT |
| 033775004EA | DRSCR #6-1/4 304 S.S. | 2.000 EA |
| 034180054KA | KEY 7/8X7/8X6-3/4 L | 1.000 EA |
| 604797056 | 400-447 FRAME 60 X 42 | 1.000 EA |
| 032510026D | CARRIAGE BOLT - 440 | 2.000 EA |
| 034001014AB | FLAT WASHER 3/8"PLATED | 2.000 EA |
| 034001016AB | WSHR .562ID 1.375OD .109 | 2.000 EA |
| 033300014AC | HEX NUT, SHIPPING - 400 | 2.000 EA |
| 604797003C | SHIPPING BAG | 1.000 EA |

| | | | | | | |
|-----------|-------------|-------------------|-----------|--|-------------|-------|
| REL. S.O. | FRAME | HP | TYPE | PHASE/HERTZ | RPM | VOLTS |
| | 449T | 350 | P | 3/60 | 1780 | 460 |
| AMPS | DUTY | AMB °C/ INSUL. | S.F. | NEMA DESIGN | CODE LETTER | ENCL. |
| 382 | CONT | 40/B | 1.15 | B | F | PRXE |
| E/S | ROTOR | TEST S.O. | TEST DATE | STATOR RES. @25 °C OHMS (BETWEEN LINES) | | |
| 433856 | 4181430491E | --- | --- | .0126 | | |

PERFORMANCE

| LOAD | HP | AMPERES | RPM | POWER FACTOR % | EFFICIENCY % |
|---------|------|---------|------|----------------|--------------|
| NO LOAD | 0 | 80.6 | 1800 | 4.45 | 0 |
| 1/4 | 87.6 | 120 | 1796 | 71.8 | 95.2 |
| 2/4 | 175 | 195 | 1792 | 87.1 | 96.6 |
| 3/4 | 262 | 285 | 1787 | 89.4 | 96.6 |
| 4/4 | 350 | 382 | 1782 | 89.2 | 96.2 |
| 5/4 | 438 | 483 | 1777 | 88.8 | 95.6 |

SPEED TORQUE

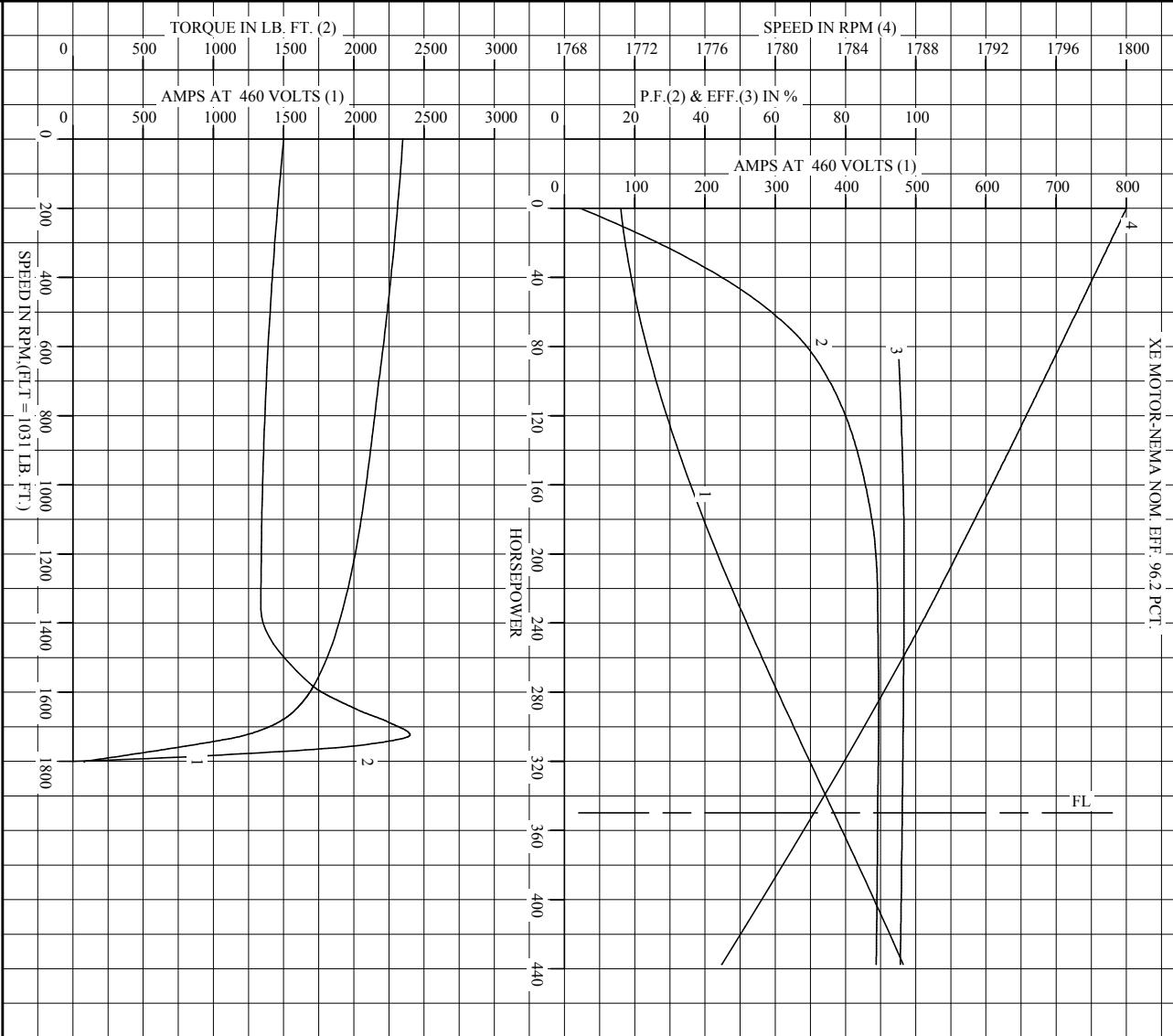
| | RPM | TORQUE % FULL LOAD | TORQUE LB.-FT. | AMPERES |
|--------------|------|--------------------|----------------|---------|
| LOCKED ROTOR | 0 | 146 | 1501 | 2349 |
| PULL UP | 1360 | 130 | 1339 | 1921 |
| BREAKDOWN | 1723 | 233 | 2400 | 1233 |
| FULL LOAD | 1782 | 100 | 1031 | 382 |

AMPERES SHOWN FOR 460. VOLT CONNECTION. IF OTHER VOLTAGE CONNECTIONS ARE AVAILABLE, THE AMPERES WILL VARY INVERSELY WITH THE RATED VOLTAGE

REMARKS: CALCULATED DATA
XE MOTOR-NEMA NOM. EFF. 96.2 PCT.

| | | |
|---------------|-----------------------|-------------------------|
| BALDOR | DR. BY W. L. SMITH | A-C MOTOR |
| | CK. BY J. J. HARRISON | |
| | APP. BY W. L. SMITH | PERFORMANCE DATA |
| | DATE 07/27/05 | ISSUE DATE 07/25/05 |

REL. S.O. _____ RPM 1780 S.F. 1.15 ROTOR 4181430491E
 FRAME 449T VOLTS 460 NEMA DESIGN B TEST S.O. CALCULATED DATA
 HP 350 AMPS 382 CODE LETTER F TEST DATE ---
 TYPE P DUTY CONT ENCLOSURE PRXE STATOR RES. @ 25 °C .0126
 PHASE/HERTZ 3/60 AMB °C/INSUL 40/B E/S 433856 OHMS (BETWEEN LINES)



AMPERS SHOWN FOR 460 VOLT CONNECTION, IF OTHER VOLTAGE CONNECTIONS ARE AVAILABLE, THE AMPERS WILL VARY INVERSELY WITH THE RATED VOLTAGE.



DR. BY W.L. SMITH
 CK. BY J.H. HARRISON
 App. BY W.L. SMITH
 DATE 07/27/05

A-C MOTOR
PERFORMANCE
CURVES
 A44W/G3196-R001
 ISSUE DATE 07/25/05

Printed on 2/3/11 13:27 @ usmghengdev1

DUTY MASTER ALTERNATING CURRENT MOTORS
SQUIRREL-CAGE INDUCTION

604989-505

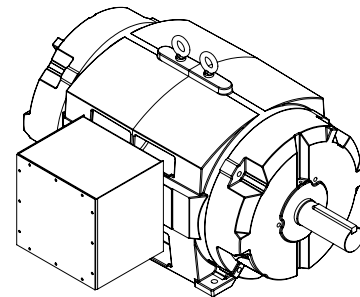
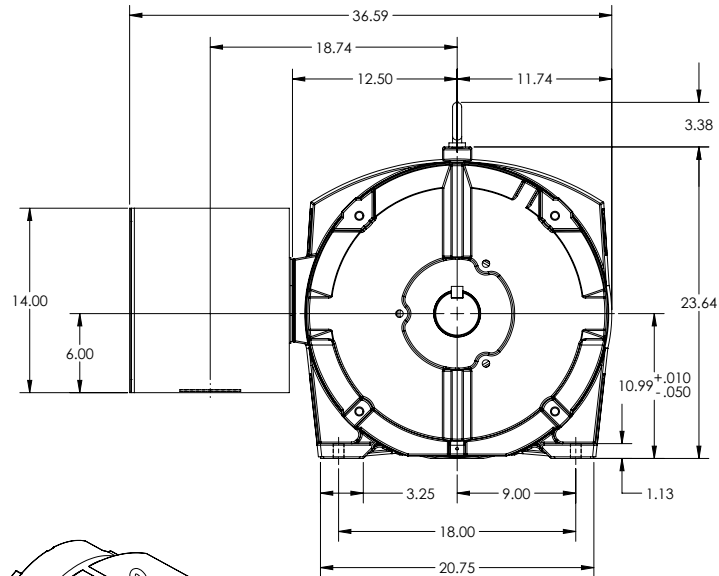
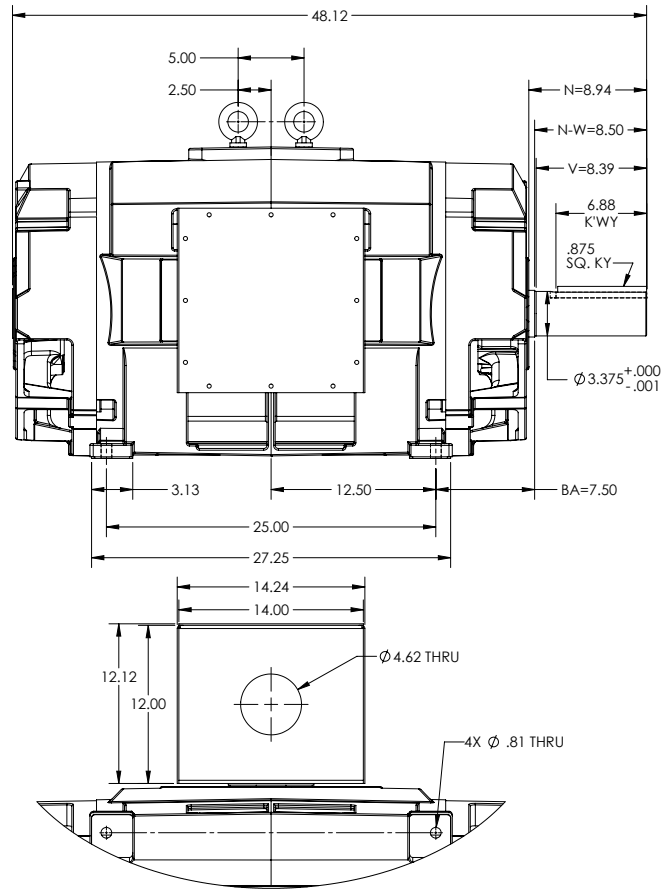
ENCLOSURE: PROTECTED; OPEN DRIP PROOF

FRAME E449T

COOLING: SELF-VENTILATED

MOUNTING: FOOT, F-1 SIDE

14X14X12 FABRICATED STEEL C/BOX



MOTOR WRIGHT: 2100 LBS
*MAY VARY BY 15% DEPENDING ON RATING

DIMENSIONS ARE IN INCHES

CUSTOMER IS RESPONSIBLE FOR DETERMINING THAT MOTOR PERFORMANCE IS SUITABLE IN THE APPLICATION.

IF MOUNTING CLEARANCE DETAILS ARE REQUIRED, CONSULT FACTORY.

MAXIMUM PERMISSIBLE SHAFT RUNOUT WHEN MEASURED AT END OF STANDARD SHAFT EXTENSION IS .003\"/>

SHEET NUMBER
1 OF 1

505-686109

| | | |
|---|------------------------------|------------------|
| REV. DESC: REMOVE FUNCTIONAL REPLACEMENT NOTE | REVISED: 11/08/13 11/19/2015 | TDR: 00000953052 |
| REV: A | VERSION: 01 | |
| MODEL NO. 604989-505 | | |
| BY: USBRCHA2 | | |

BALDOR

449T PROT F-1 FT - 14X14X12 FAB STL C/BOX

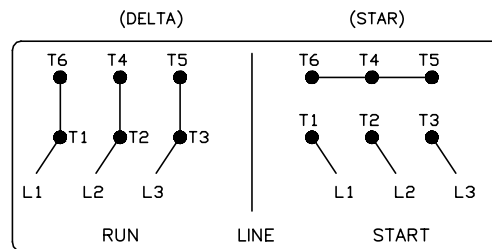
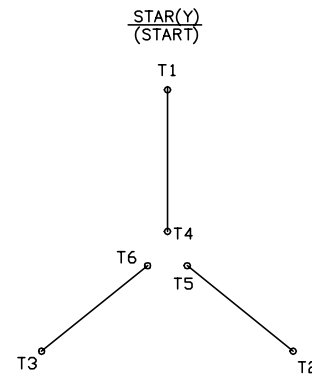
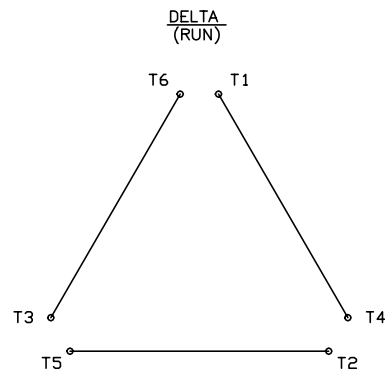
505-686109

416820-008

A-C MOTOR CONNECTION DIAGRAM

STANDARD 6 LEAD

Y START - DELTA RUN



< N. P. 1767-DC >

416820-008

| | | |
|--|--------------------------------|-------------------|
| REV. DESC: ADDED T4 TO Y CONNECT DIAGRAM | | |
| REV. LTR: D | VERSION: 04 | TDR: 000000847713 |
| FILE: \RAG\00001\808 | REVISED: 10: 41: 26 04/08/2014 | BY: RAGJSS1 |
| MTL: - | Ⓢ □ | |

BALDOR

CONNECT DIAGRAM STD 6 LEAD Y START DELTA RUN

SH 1 of 1

Marketing maintained PDF of MN408:

<http://www.baldor.com/support/Literature/Load.ashx/MN408?ManNumber=MN408>

Marketing maintained PDF of MN416:

<http://www.baldor.com/support/Literature/Load.ashx/MN416?ManNumber=MN416>