

BALDOR® • ***RELIANCE***

Product Information Packet

IDXM7037T

2HP, 1760RPM, 3PH, 60HZ, 145TC, 3535M, XPFC, F1

Part Detail							
Revision:	K	Status:	PRD/A	Change #:		Proprietary:	No
Type:	AC	Prod. Type:	3535M	Elec. Spec:	35WGZ542	CD Diagram:	CD0005
Enclosure:	XPFC	Mfg Plant:		Mech. Spec:	35N256	Layout:	35LYN256
Frame:	145TC	Mounting:	F1	Poles:	04	Created Date:	11-24-2010
Base:	RG	Rotation:	R	Insulation:	F	Eff. Date:	07-22-2015
Leads:	9#18					Replaced By:	
Literature:		Elec. Diagram:					

Nameplate NP0887XPSLEV

NO.		CC	010A
S/N		TEMP CODE	T3C
SPEC.	35N256Z542G1	INV. TYPE	PWM
CAT.NO.	IDXM7037T	C HP FR	60
HP	2	C HP TO	90
VOLTS	230/460	CT HZ FROM	6
AMPS	5.6/2.8	VT HZ FROM	6
RPM	1760	MAG CUR	3/1.5
HZ	60	MX RPM	2700
SER.F.	1.00	NOM.EFF.	88.5
FRAME	145TC	PH	3
	55C RISE	CL	F
		DES	B
		SL HZ	1.3
		RATING	40C AMB-CONT
		WK2	0.21

Parts List		
Part Number	Description	Quantity
SA212876	SA 35N256Z542G1	1.000 EA
RA200105	RA 35N256Z542G1	1.000 EA
34FN3002B01	EXTERNAL FAN, PLASTIC, .637/.639 HUB W/	1.000 EA
35CB3001A02SP	EXPL PROOF CONDUIT BOX, 3/4"PIPE TAP LEA	1.000 EA
11XW1032G06	10-32 X .38, TAPTITE II, HEX WSHR SLTD U	1.000 EA
HW3001B01	BRASS CUP WASHER, FOR #8 SCREW	1.000 EA
35EP3700A01SP	FR ENDPLATE, XPFC	1.000 EA
HW5100A03SP	WAVY WASHER (W1543-017)	1.000 EA
35EP3702A01SP	PU EP-205 BRG-35X-56C-143-5TC	1.000 EA
51XN1032A16	10-32 X 1.000 HX WS SL SR	2.000 EA
HA3013A01	1/2-20X5/8 SPL.HX BOLT	2.000 EA
HW3021C06	3/32 DI X .625 PIN (F/S)	2.000 EA
XY3118A12	5/16-18 HEX NUT DIRECTIONAL SERRATION	4.000 EA
51XB1214A16	12-14X1.00 HXWSSLD SERTYB	1.000 EA
35FH4005A01SP	IEC FH NO GREASER W/PRIMED	1.000 EA
51XW1032A06	10-32 X .38, TAPTITE II, HEX WSHR SLTD S	3.000 EA
35CB3500A01SP	CONDUIT BOX LID, MACH	1.000 EA
51XN2520A16	SCREW, HEX WS SLT, ZN, 1/4-20 X 1.00	4.000 EA
HW2501D13	KEY, 3/16 SQ X 1.375	1.000 EA
HA7000A01	KEY RETAINER 7/8" DIA SHAFT	1.000 EA
85XU0407S04	4X1/4 U DRIVE PIN STAINLESS	6.000 EA
NP0018F	ALUM UL XP CONDUIT BOX NAMEPLATE	1.000 EA
MJ1000A02	GREASE, POLYREX EM EXXON (USe 4824-15A)	0.050 LB
MG1025G29	WILKOFAS, 789.229, DARK CHARCOAL GRAY	0.017 GA

Parts List (continued)		
Part Number	Description	Quantity
HA3104A10	THRUBOLT, 5/16-18 X 10.25	4.000 EA
LB1119N	WARNING LABEL	1.000 EA
LC0145B01	CONNECTION LABEL	1.000 EA
NP0887XPSLEV	SS XP INV UL CSA-EEV CC CL-I GP-D	1.000 EA
36PA1001	PKG GRP, PRINT PK1017A06	1.000 EA
MN416A01	TAG-INSTAL-MAINT no wire (1200/bx) 11/14	1.000 EA

AC Induction Motor Performance Data

Page 1 of 1



AC Induction Motor Performance Data

Record # 33866

Typical performance - not guaranteed values

Winding: 35WGZ542	Type: 3535M	Enclosure: XPFC
--------------------------	--------------------	------------------------

Nameplate Data			General Characteristics at 460 V, 60 Hz: High Volt Connection		
Rated Output (HP)	2		Full Load Torque	5.88 LB-FT	
Volts	230/460		Start Configuration	DOL	
Full Load Amps	5.6/2.8		Break Down Torque	24.6 LB-FT	
R.P.M.	1760		Pull-Up Torque	17.3 LB-FT	
Hz	60	Phase	3	Locked-rotor Torque	19.5 LB-FT
NEMA Design Code	B	KVA Code	L	Starting Current	25 Amps
Service Factor	1		No-load Current	1.54 Amps	
NEMA Nom. Eff.	88.5	P.F.	76	Line-line Res. @ 25°C.	6.61 Ohms
Rating - Duty	40C AMB-CONT		Temp. Rise @ Rated Load	49°C	
S.F. Amps			Temp. Rise @ S.F. Load		

Load Characteristics at 460 Volts, 60 Hz, 2 HP

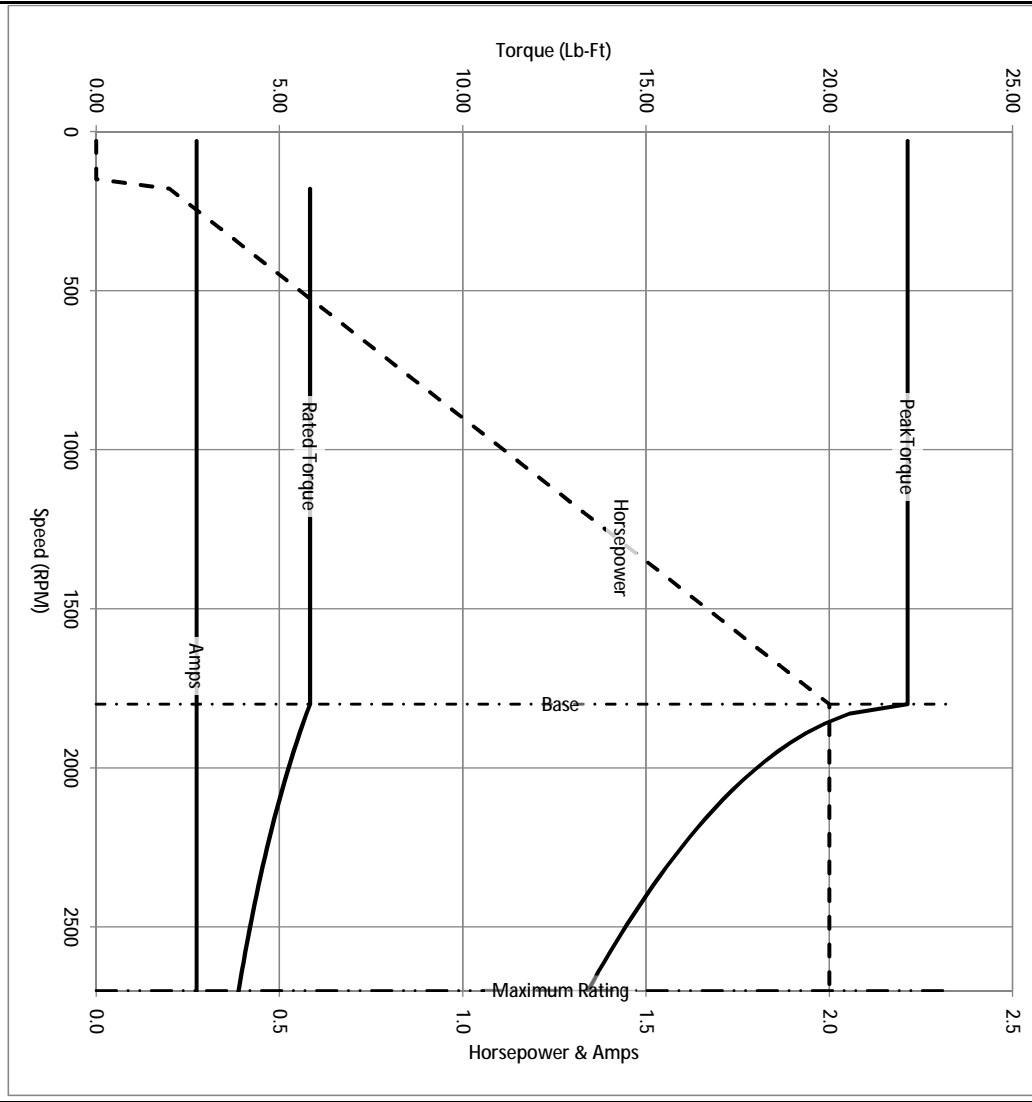
% of Rated Load	25	50	75	100	125	150	S.F.
Power Factor	35	55	69	76	80	84	
Efficiency	80.6	87.2	89.2	89	88.6	87.5	
Speed	1792	1783	1772	1761	1749	1737	
Line Amperes	1.65	1.91	2.29	2.74	3.27	3.82	

Baldor Electric Company Fort Smith, Arkansas

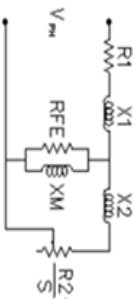


3/6/2013

Catalog	IDXM7037T	NP VOLTS	230/460	ENCLOSURE	XPFC	WVE CONN EQ CRT OHMS PER PHASE (BASE RATING, 20C)
FRAME	145TC	NP AMPS	5.6/2.8	Base Volts	460	R1 3.240 X1 6.730
HP	2 HP	DUTY	Cont	Base AMPS	2.74	R2 2.100 X2 6.039
BASE SPEED	1800	MAX SAFE RPM	2700	Slip Hz	1.30	XM1 163.482
PHASE/HZ	3/60	AMB ⁰ /INSUL	40/F	WK ² (lb-ft ²)	0.207	



Remarks: Calculated Data



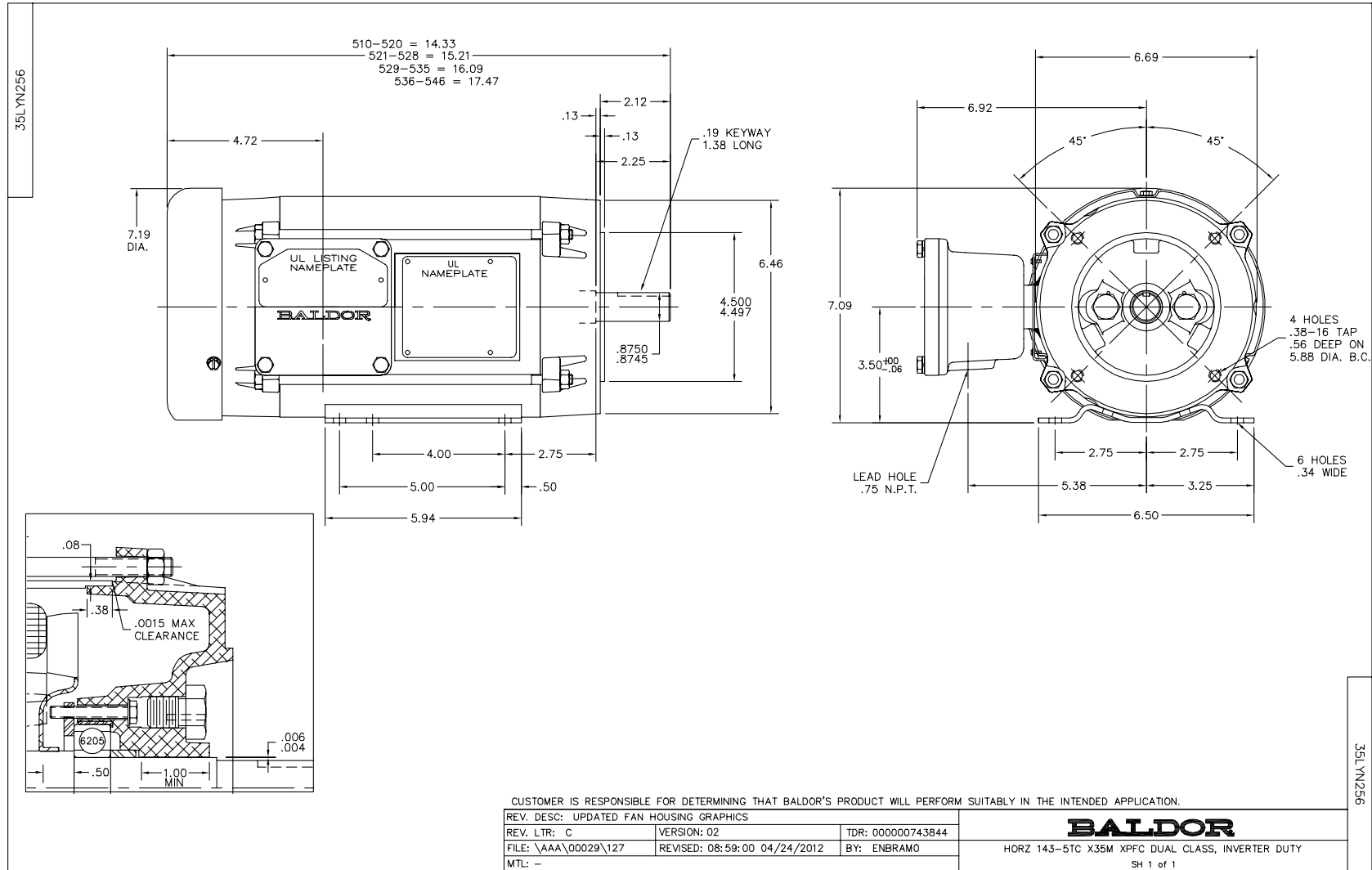
BALDOR DR BY ENR
 CK BY
 APP BY ENR
 DATE 3/6/2013

35N256Z542G1

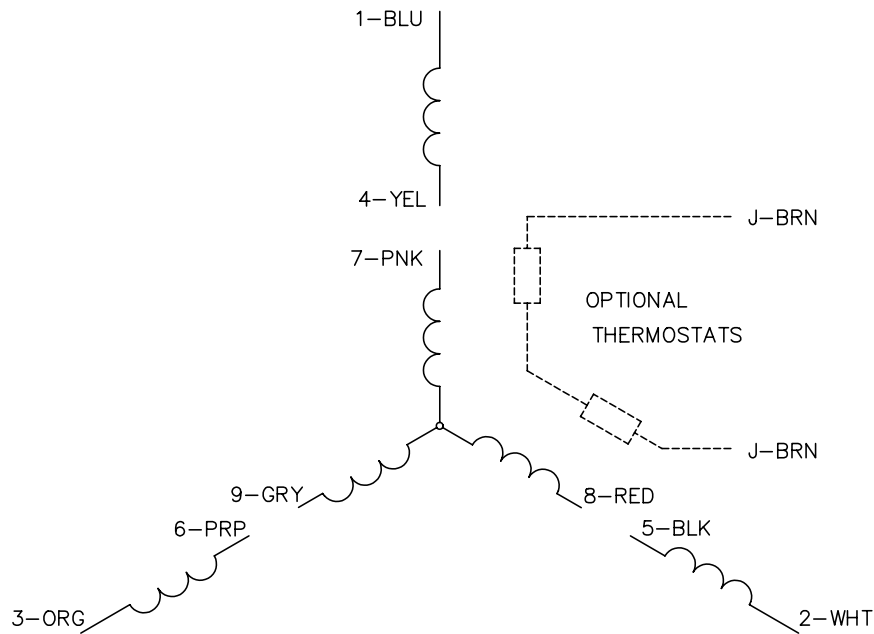
A-C MOTOR
 PERFORMANCE CURVES

ISSUE DATE 3/6/2013

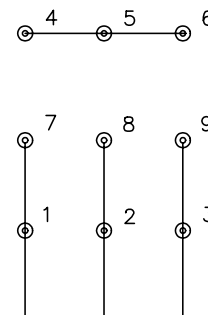
A MEMBER OF THE ABB GROUP



CD0005

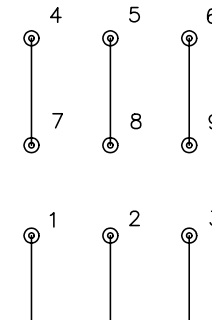


LOW VOLTAGE
(2Y)



LINE

HIGH VOLTAGE
(1Y)



LINE

NOTES:

1. INTERCHANGE ANY TWO LINE LEADS TO REVERSE ROTATION.
2. OPTIONAL THERMOSTATS ARE PROVIDED WHEN SPECIFIED.
3. ACTUAL NUMBER OF INTERNAL PARALLEL CIRCUITS MAY BE A MULTIPLE OF THOSE SHOWN ABOVE.
4. LEAD COLORS ARE OPTIONAL. LEADS MUST ALWAYS BE NUMBERED AS SHOWN.

REV. DESC: REVISE TO SHOW OPTIONAL COLORS			
REV. LTR: E	BY: JLP	REVISED: 01/19/99 10:15	TDR: 0171435
900000		FILE: AAA00005140	MDL: -
		MTL: -	

BALDOR ELECTRIC Co.

3PH, DV, 9 LEADS

CD0005