

# **BALDOR**® • *RELIANCE*

## Product Information Packet

# L3708TM

5HP,1725RPM,1PH,60HZ,213T,3744LC,TEFC,F1

Part Detail							
Revision:	AR	Status:	PRD/A	Change #:		Proprietary:	No
Type:	AC	Prod. Type:	3744LC	Elec. Spec:	37WG0679	CD Diagram:	CD0002A02
Enclosure:	TEFC	Mfg Plant:		Mech. Spec:	37E039	Layout:	37LYE039
Frame:	213T	Mounting:	F1	Poles:	04	Created Date:	
Base:	RG	Rotation:	R	Insulation:	B	Eff. Date:	09-10-2015
Leads:	2#12 A PH,3#14 B&J					Replaced By:	
Literature:		Elec. Diagram:					

Nameplate NP1257L	
CAT.NO.	L3708TM
SPEC.	37E39-679
HP	5
VOLTS	230
AMP	21.5
RPM	1725
FRAME	213T
	HZ 60
	PH 1
SER.F.	1.00
	CODE J
	DES L
	CL B
NEMA-NOM-EFF	82
	PF 87
RATING	40C AMB-CONT
CC	USABLE AT 208V
DE	6307
	ODE 6206
ENCL	TEFC
	SN

Parts List		
Part Number	Description	Quantity
SA030775	SA 37E39-679	1.000 EA
RA026814	RA 37E39-679	1.000 EA
OC3020F12	CYL OIL CAP 20MFD/370V	1.000 EA
TPBRJ35DB	THERMAL 1PH 1.25 MAN 120C	1.000 EA
EC1216C06SP	ELEC CAP, 216-259 MFD, 250V, 2.06D X 4.	2.000 EA
HA6361A01	LIFTING LUG FOR 37, 39 & 40 FRAME ZINC	2.000 EA
37CB3004A11	37 CB 1.09 DIA @ 6:00, 1.25 MTO @ 3:00	1.000 EA
37GS1000	GASKET, CONDUIT BOX STD., .06 THICK LEXI	1.000 EA
51XW2520A12	.25-20 X .75, TAPTITE II, HEX WSHR SLTD	2.000 EA
11XW1032G06	10-32 X .38, TAPTITE II, HEX WSHR SLTD U	1.000 EA
HA6015A08	THERMAL RETAINER (PLATED)	1.000 EA
51XB1214A10	12-14 X 5/8HX WS SL SR TYBX	2.000 EA
37EP3101A01	FR ENDPLATE, FOR ROUTING PURPOSES	1.000 EA
HW4500A01	1641B(ALEMITE)400 UNIV, GREASE FITT	1.000 EA
13XF0832A08	8-32 X.50 PAN HD,SLTD, TYPE F SCREW, ZIN	2.000 EA
NS2539	INSULATOR FOR 37 FRAMESWITCH (MH1011A10)	1.000 EA
37CB3802SP	CAPACITOR COVER, CAST	1.000 EA
37GS3012A01	GASKET,CAP.BOX 1/16"THICKLEXIDE SV-330 T	1.000 EA
10XN2520A10	1/4-20X 5/8 HEX HD X	2.000 EA
HW1001A25	LOCKWASHER 1/4, ZINC PLT .493 OD, .255 I	2.000 EA
HW5100A06	W2420-025 WVY WSHR (WB)	1.000 EA
37PE3100A01	PUEP ASSEMBLY - ROUTING PUPROSES	1.000 EA
HW4500A01	1641B(ALEMITE)400 UNIV, GREASE FITT	1.000 EA
XY3118A12	5/16-18 HEX NUT DIRECTIONAL SERRATION	4.000 EA

Parts List (continued)		
Part Number	Description	Quantity
51XB1214A20	12-14X1.25 HXWSSLD SERTYB	1.000 EA
07FH4007A41	IEC FH W/GRSR, NOTCH @ 6:00 & 3 FAN CVR,	1.000 EA
51XW1032A06	10-32 X .38, TAPTITE II, HEX WSHR SLTD S	3.000 EA
37CB4516	LIPPED LID FOR 37 FRAME NEC KOBX	1.000 EA
37GS1008SP	37 GS FOR CB LID - LEXIDE	1.000 EA
51XW0832A07	8-32 X .44, TAPTITE II, HEX WSHR SLTD SE	4.000 EA
HW2501F21	KEY, 5/16 SQ X 2.375	1.000 EA
HA7000A02	KEY RETAINER RING, 1 1/8 DIA, 1 3/8 DIA	1.000 EA
LB1087	LABEL,MANUAL RESET (ROLL LABEL)	1.000 EA
LB1115N	LABEL,LIFTING DEVICE (ON ROLLS)	1.000 EA
85XU0407S04	4X1/4 U DRIVE PIN STAINLESS	2.000 EA
HA7010A01	CAPACITOR RETENTION CLAMP, 6.562 LONG	1.000 EA
MJ1000A02	GREASE, POLYREX EM EXXON (USe 4824-15A)	0.050 LB
37FN3002A01SP	EXFN, PLASTIC, 9.00 OD, 1.155 ID	1.000 EA
MG1000G27	MED CHARCOAL METALLIC GREY 400-0096	0.028 GA
SP5172A05	37 TYPE LC TORQ STAT SW LEAD ASSEMBLY	1.000 EA
WD1000A15	3-520132-2 AMP FLAG (4M/RL NON-CANC/NON-	6.000 EA
HA3104A53	THRUBOLT .31-18 X 13.687 W/2.25" THRD LE	4.000 EA
LB1119N	WARNING LABEL	1.000 EA
LC0002	CONNECTION LABEL	1.000 EA
NP1257L	ALUM UL CSA CC THERMAL REV MTG	1.000 EA
36PA1001	PKG GRP, PRINT PK1017A06	1.000 EA
MN416A01	TAG-INSTAL-MAINT no wire (1200/bx) 11/14	1.000 EA

<b>Accessories</b>		
<b>Part Number</b>	<b>Description</b>	<b>Multiplier</b>
37-3301	C FACE KIT	P1

**AC Induction Motor Performance Data**

Record # 11612 - Typical performance - not guaranteed values

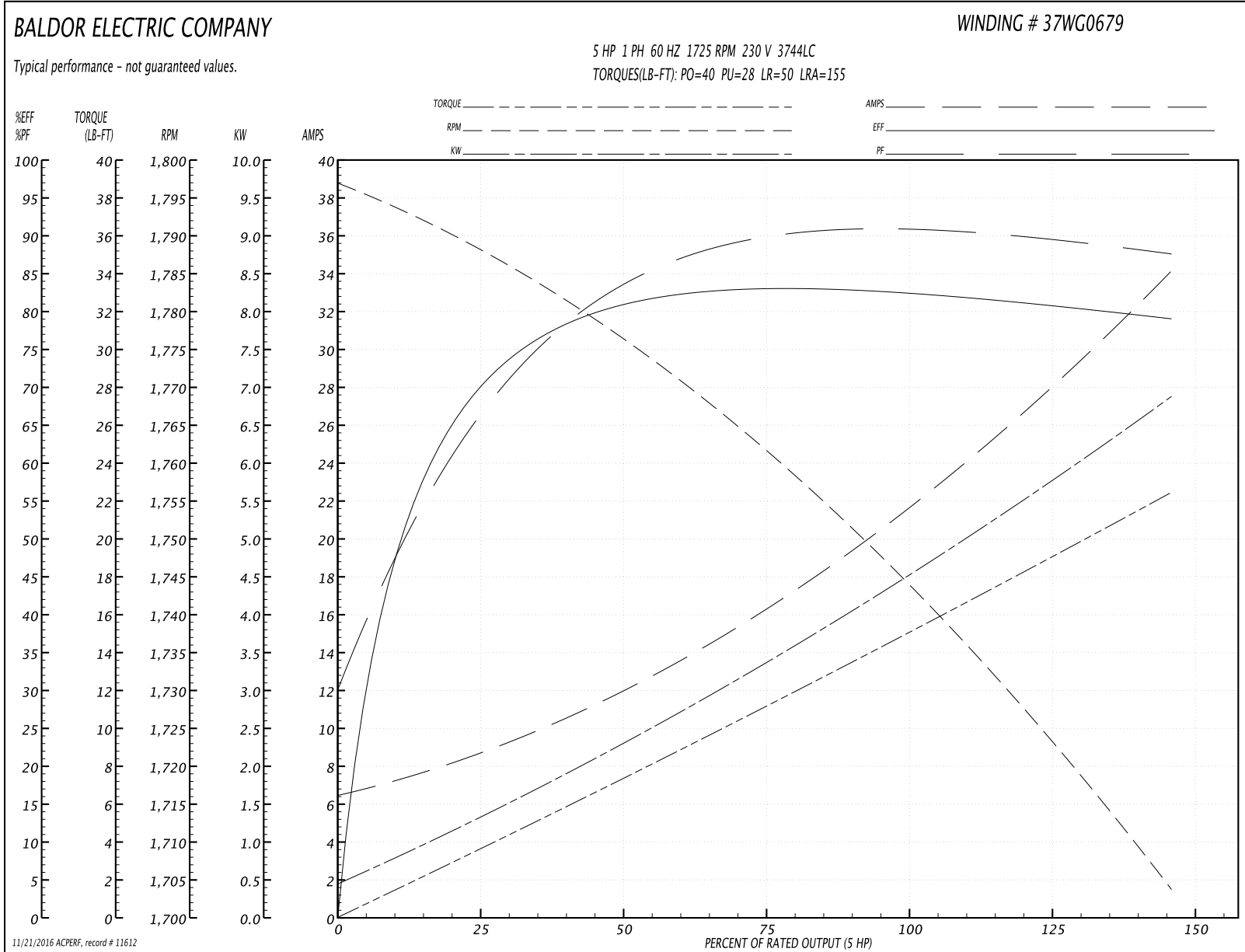
<b>Winding:</b> 37WG0679-R001	<b>Type:</b> 3744LC	<b>Enclosure:</b> TEFC
-------------------------------	---------------------	------------------------

Nameplate Data				230 V, 60 Hz: Single Voltage Motor	
Rated Output (HP)	5			Full Load Torque	15 LB-FT
Volts	230			Start Configuration	direct on line
Full Load Amps	21.5			Breakdown Torque	40 LB-FT
R.P.M.	1725			Pull-up Torque	28 LB-FT
Hz	60	Phase	1	Locked-rotor Torque	50 LB-FT
NEMA Design Code	L	KVA Code	J	Starting Current	155 A
Service Factor (S.F.)	1			No-load Current	6.5 A
NEMA Nom. Eff.	82	Power Factor	87	Line-line Res. @ 25°C	0.464 Ω A Ph 2.17 Ω B Ph
Rating - Duty	40C AMB-CONT			Temp. Rise @ Rated Load	69°C

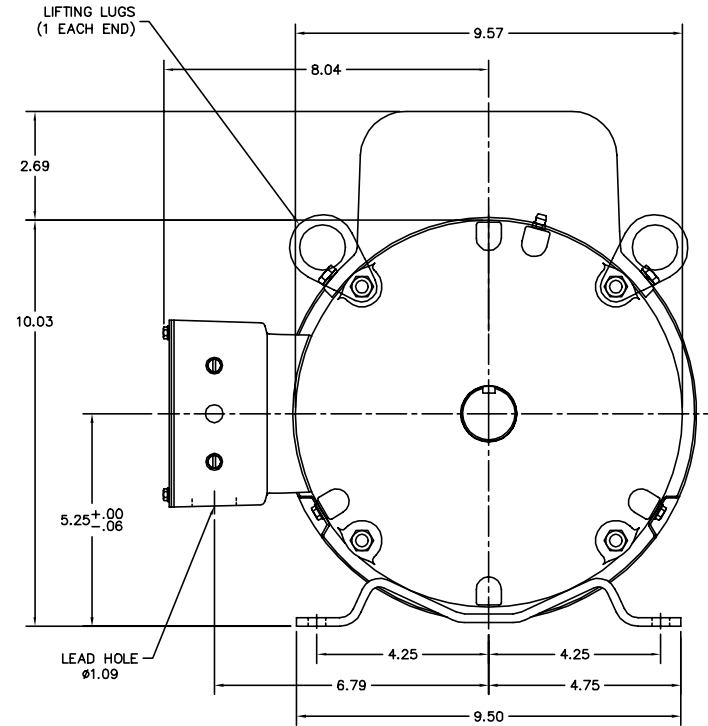
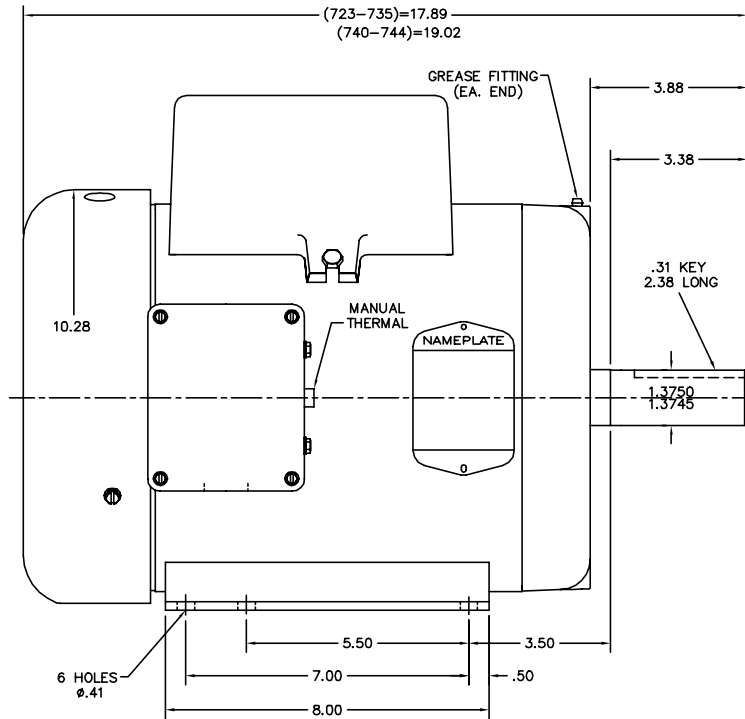
Load Characteristics 230 V, 60 Hz, 5 HP

% of Rated Load	25	50	75	100	125	150
Power Factor	68	83	89	91	91	90
Efficiency	69.2	80	82.9	83	81.5	78.6
Speed	1787	1775	1761	1745	1727	1702
Line amperes	8.6	12.2	16.5	21.6	27.3	34.3

Performance Graph at 230V, 60Hz, 5.0HP Typical performance - Not guaranteed values



37LYE039



CUSTOMER IS RESPONSIBLE FOR DETERMINING THAT MOTOR PERFORMANCE IS SUITABLE IN THE APPLICATION.

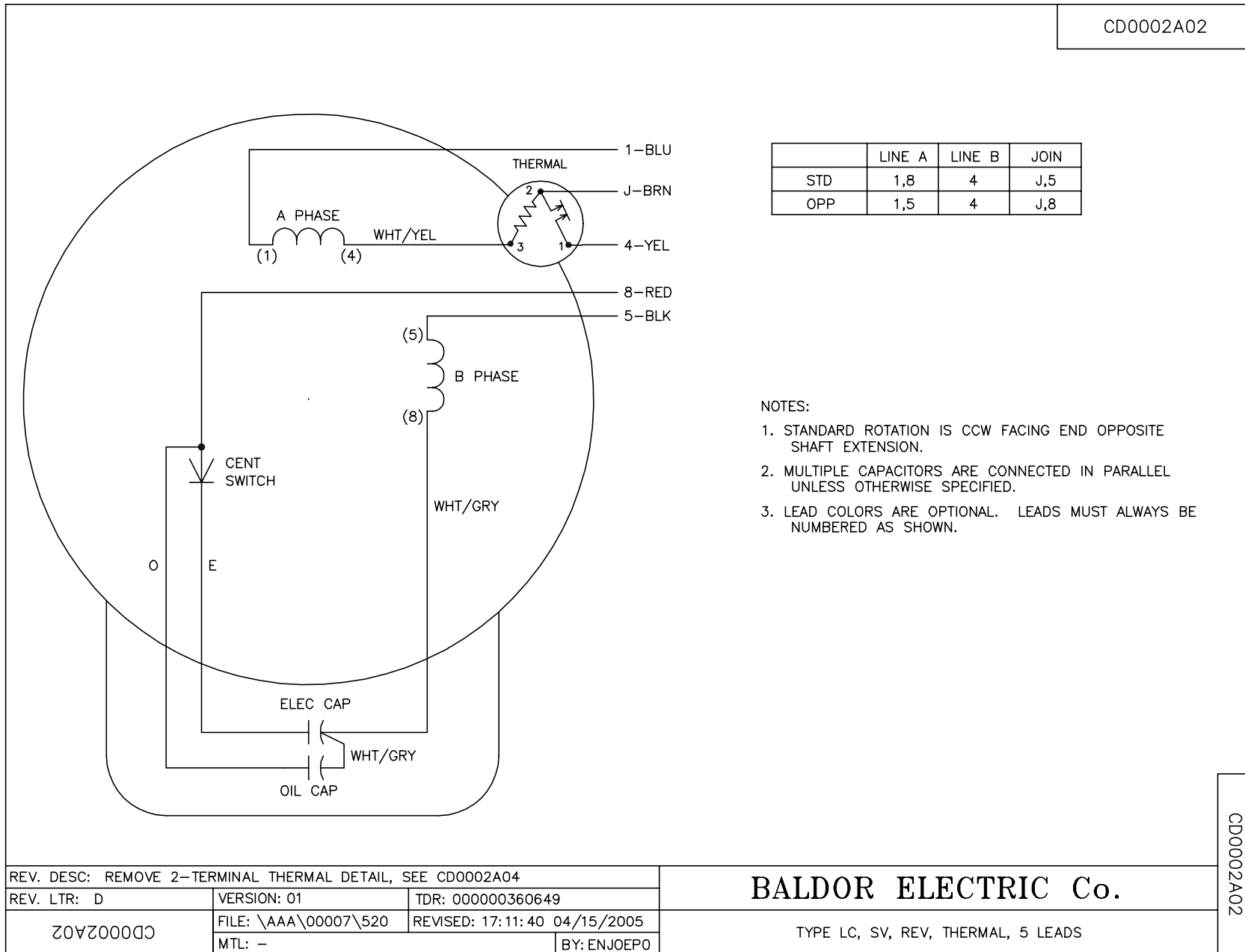
REV. DESC: ADD LIFTING LUGS			
REV. LTR: E	BY: JF	REVISED: 08:38:48 05/20/2004	TDR: 327402
FILE: AAA00007744		REF: 37LYE039	
MTL: -			

**BALDOR ELECTRIC Co.**

STD HORZ 213-5T TEFC 37LC W/1.25 BE MANUAL THERMAL

37LYE039

CD0002A02



CD0002A02

REV. DESC: REMOVE 2-TERMINAL THERMAL DETAIL, SEE CD0002A04		
REV. LTR: D	VERSION: 01	TDR: 000000360649
Z0VZ000003 CD0002A02	FILE: \AAA\00007\520	REVISED: 17:11:40 04/15/2005
	MTL: -	BY: ENJOEPO

**BALDOR ELECTRIC Co.**

TYPE LC, SV, REV, THERMAL, 5 LEADS