

# **BALDOR**® • *RELIANCE*

## Product Information Packet

# OF4409T

100HP, 1135RPM, 3PH, 60HZ, 445T, A44116M, TEFC

Part Detail							
Revision:	J	Status:	PRD/A	Change #:		Proprietary:	No
Type:	AC	Prod. Type:	A44116M	Elec. Spec:	A44WG3440	CD Diagram:	416820-004
Enclosure:	TEFC	Mfg Plant:		Mech. Spec:		Layout:	617427-008
Frame:	445T	Mounting:	F2	Poles:	06	Created Date:	08-21-2012
Base:		Rotation:	R	Insulation:	F	Eff. Date:	09-17-2015
Leads:	6#2					Replaced By:	
Literature:		Elec. Diagram:					

Nameplate NP2531L			
CAT.NO.	OF4409T	SPEC NO.	P44G3990
HP	100	PHASE	3
RPM	1135	DESIGN	D
VOLTS	460/796	TYPE	P
AMPS	117/67.6	AMB	40
DRIVE END BEARING	90BC03J30X	SF	1.15
OPP D.E. BEARING	90BC03J30X	INSUL.CLASS	F
SER.NO.		ENCL	TEFC
		CODE	G
		NEMA-NOM-EFFICIENCY	90.2
		MOTOR WEIGHT	2074
		FRAME	445T

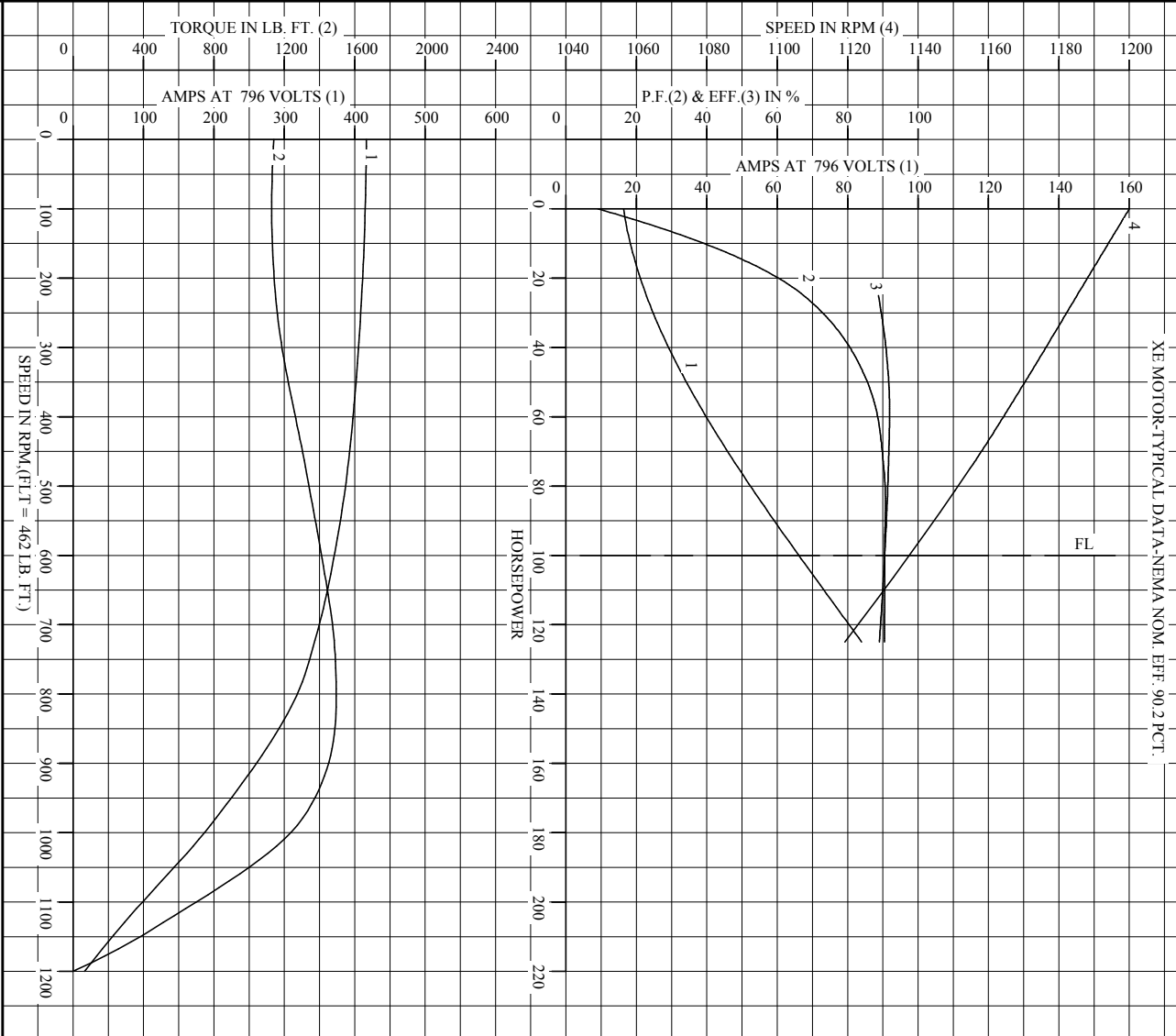
Parts List		
Part Number	Description	Quantity
SA254338	SA P44G3990	1.000 EA
RA241146	RA P44G3990	1.000 EA
000613006PU	N/P (RELEASE QTY 10,000) UL CSA LABEL	1.000 EA
NP2531L	INDUSTRIAL MOTOR,SS, CSA-C US,	1.000 EA
000692000FF	N/P	1.000 EA
000692000VD	LABEL WARNING	1.000 EA
004824015A	GREASE POLYREX EM	1.000 LB
032018004BK	HHCS 5/16-18X1/2 PLATED	3.000 EA
032018008CK	HHCS 3/8-16X1L PLATED	4.000 EA
032018008DK	HHCS 1/2-13X1 PLATED	4.000 EA
032018020FK	HHCS 3/4-10X2-1/2 PLTD.	4.000 EA
032018020FK	HHCS 3/4-10X2-1/2 PLTD.	4.000 EA
032018030DK	HHCS 1/2-13X3-3/4 PLTD.	3.000 EA
032018030DK	HHCS 1/2-13X3-3/4 PLTD.	3.000 EA
032620016LA	SOCKET SET SCREW-449	3.000 EA
033512004LB	HHTTS 1/4-20X1/2 PLTD.	1.000 EA
033775004EA	DRSCR #6-1/4 304 S.S.	2.000 EA
034017013AB	LCKW 5/16 STD. PLATED	3.000 EA
034017014AB	LCKW 3/8 STD. PLATED	4.000 EA
034530064AB	P/NIP 1/8 X 8" L Pipe Nipple	1.000 EA
034530064BB	P/NIP 1/4X8 PLATED	1.000 EA
034180014DA	KEY 1/4X1/4X1-3/4 L	1.000 EA
034180054KA	KEY 7/8X7/8X6-3/4 L	1.000 EA
034530044AB	P/NIP 1/8X5-1/2L GALV.	1.000 EA

Parts List (continued)		
Part Number	Description	Quantity
034530044BB	P/NIP 1/4X5-1/2L PLT	1.000 EA
034631002AB	BUSH 1/4 TO 1/8 PLTD.	1.000 EA
034690005AB	PPLG 3/4 PLATED	2.000 EA
035000001A	ALFTG 1/8" 1610-BL	1.000 EA
035000001A	ALFTG 1/8" 1610-BL	1.000 EA
067053014A	GASK 440	1.000 EA
076870000B	+CBCST BLKT - 440	1.000 EA
076871000A	+CBOX CVR BLKT - 449	1.000 EA
083199082A	G28 FAN COVER MACHINING SHORT VERSION	1.000 EA
089490099A	G28 BRKT 089490098WCA KB	1.000 EA
415915007G	GASK, LAC	1.000 FT
406056007A	GASKET, 440	1.000 EA
406099000A	PLUG - FAN COVER 320-440	1.000 EA
410700004A	WSHR	1.000 EA
412118006A	DRAIN	1.000 EA
412118006A	DRAIN	1.000 EA
415000103D	T/LUG #4AWG-1/0AWG W/HOLE FOR .250 BOLT	1.000 EA
415045002A	SLGR	1.000 EA
034631002AB	BUSH 1/4 TO 1/8 PLTD.	1.000 EA
415045002A	SLGR	1.000 EA
415096002A	CPLG 1/8 HEX TYPE	1.000 EA
415096002A	CPLG 1/8 HEX TYPE	1.000 EA
418150003A	GREASE FITTING CAP	1.000 EA
MG1025G03	WILKOFAS, 789.901, OIL RIG SILVER	1.000 GA

Product Information Packet: OF4409T - 100HP,1135RPM,3PH,60HZ,445T,A44116M,TEFC

418151014G	RETAIN RING	1.000 EA
418150003A	GREASE FITTING CAP	1.000 EA
421948037	LABEL, MYLAR	1.000 EA
702618003T	FAN 440	1.000 EA
702623013A	THERMAL BARRIER -- G28 -- BRACKET MTD	1.000 EA
089490099A	G28 BRKT 089490098WCA KB	3.000 EA
PK5004A09	BASE 48 X 39-1/4 STACK 2 X 4 RUUNER	1.000 EA
035000001G	GREASE RELIEF FITTING, ALEMITE 317400	1.000 EA
035000001G	GREASE RELIEF FITTING, ALEMITE 317400	1.000 EA

REL. S.O. \_\_\_\_\_ RPM 1135 S.F. 1.15 ROTOR 418143069CA  
 FRAME 444T VOLTS 460/796 NEMA DESIGN D TEST S.O. ---  
 HP 100 AMPS 117 CODE LETTER G TEST DATE ---  
 TYPE P DUTY CONT ENCLOSURE FCIN STATOR RES. @ 25 °C .0461/.138  
 PHASE/HERTZ 3/60 AMB °C/INSUL 40/F E/S 833151 OHMS (BETWEEN LINES)



AMPERES SHOWN FOR 796 VOLT CONNECTION, IF OTHER VOLTAGE CONNECTIONS ARE AVAILABLE, THE AMPERES WILL VARY INVERSELY WITH THE RATED VOLTAGE.

**BALDOR**  
 A MEMBER OF THE ABB GROUP

DR. BY BR. PENDELLEY  
 CK. BY TKHATI  
 App. BY TKHATI  
 DATE 09/26/11

**A-C MOTOR PERFORMANCE CURVES**  
 A44WG3440-R001  
 ISSUE DATE 09/26/11

Printed on 9/28/11 13:19 @ ragsun

REL. S.O.	FRAME	HP	TYPE	PHASE/ HERTZ	RPM	VOLTS
	444T	100	P	3/60	1135	460/796
AMPS	DUTY	AMB °C/ INSUL.	S.F.	NEMA DESIGN	CODE LETTER	ENCL.
117	CONT	40/F	1.15	D	G	FC1N
E/S	ROTOR	TEST S.O.	TEST DATE	STATOR RES. @25 °C OHMS (BETWEEN LINES)		
833151	418143069CA	---	---	.0461/.138		


PERFORMANCE

LOAD	HP	AMPERES	RPM	POWER FACTOR %	EFFICIENCY %
NO LOAD	0	16.4	1200	8.99	0
1/4	25.0	22.6	1185	67.5	88.7
2/4	50.0	34.5	1170	85.6	91.7
3/4	75.0	49.1	1155	90.3	91.6
4/4	100	66.1	1138	90.5	90.5
5/4	125	84.0	1119	90.4	89.0

SPEED TORQUE

	RPM	TORQUE % FULL LOAD	TORQUE LB.-FT.	AMPERES
LOCKED ROTOR	0	247	1141	417
PULL UP	0	247	1141	417
BREAKDOWN	809	324	1495	315
FULL LOAD	1138	100	462	66.1

AMPERES SHOWN FOR 796. VOLT CONNECTION. IF OTHER VOLTAGE CONNECTIONS ARE AVAILABLE, THE AMPERES WILL VARY INVERSELY WITH THE RATED VOLTAGE  
 REMARKS: XE MOTOR-TYPICAL DATA-NEMA NOM. EFF. 90.2 PCT.

 A MEMBER OF THE ABB GROUP	DR. BY <u>B.R.PENDLEY</u> CK. BY <u>T.RELATI</u> APP. BY <u>T.RELATI</u> DATE <u>09/26/11</u>	A-C MOTOR PERFORMANCE DATA A44WG3440-R001 ISSUE DATE 09/26/11
--	--	--

## DUTY MASTER ALTERNATING CURRENT MOTORS

SQUIRREL-CAGE INDUCTION

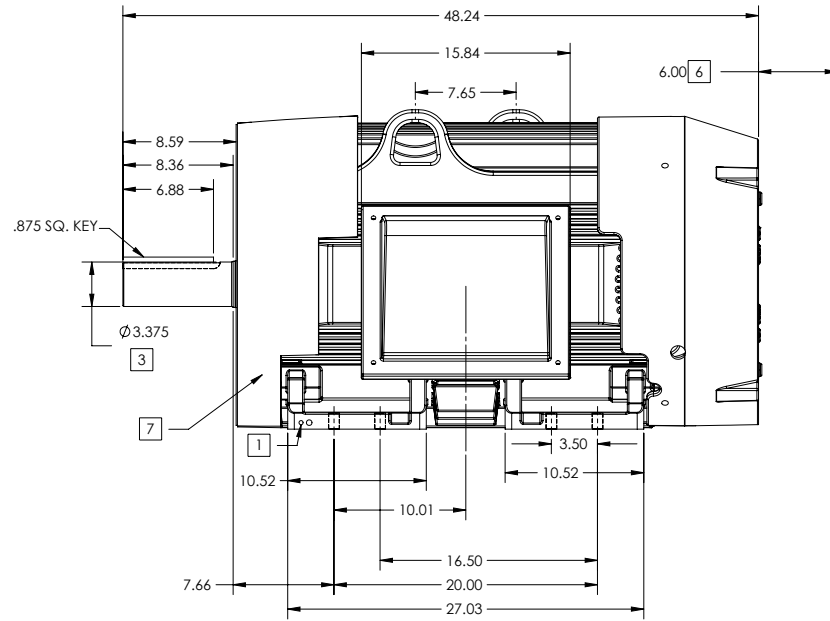
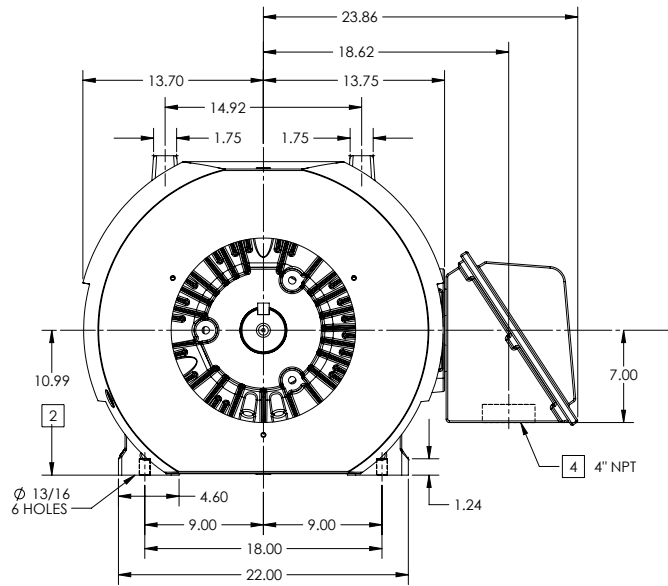
ENCLOSURE: TOTALLY ENCLOSED

FRAME G447T ABOVE NEMA RATINGS

COOLING: FAN COOLED

MOUNTING: FOOT

INCLUDES 445T FRAME MOUNTING HOLES



1. GROUND HOLES QTY 1 1/2-13 TAP; QTY 1 3/8-16 TAP
2. VARIES +.00,-.06
3. VARIES +.000,-.001
4. ON STANDARD MOTORS THIS IS CONDUIT SIZE. ON XT AND CORROSION PROOF MOTOR THIS IS PIPE TAP.
5. MOTOR WEIGHTS MAY VARY BY 15% DEPENDING ON RATING.
6. OBSTRUCTION MUST NO ENCROACH ON AIR INLET.
7. AIR DEFLECTOR INSTALLED WHEN REQUIRED.

**5** WEIGHT (LBS): 2610

DRIVE END AIR DEFLECTOR IS ONLY INCLUDED WHEN NECESSARY.

DIMENSIONS ARE IN INCHES; SEE SHEET 2 FOR DIMENSIONS IN MILLIMETERS

CUSTOMER IS RESPONSIBLE FOR DETERMINING THAT MOTOR PERFORMANCE IS SUITABLE IN THE APPLICATION.

CONDUIT BOX LOCATED ON OPPOSITE SIDE WHEN F-1.  
IF MOUNTING CLEARANCE DETAILS ARE REQUIRED, CONSULT FACTORY.  
MAXIMUM PERMISSIBLE SHAFT RUNOUT WHEN MEASURED AT END OF  
STANDARD SHAFT EXTENSION IS .003" T.I.R. TO 5 INCH DIA.

SHEET NUMBER  
**1 OF 2**

800-2727119

REV. DESC-INITIAL RELEASE			
REV. -	VERSION: 00	REVISED-10/23/06 07/23/2012	TDR: 00000749386
MODEL NO. 617427-008		REF:	
BY: MGHWCG	Material:	C	

**BALDOR**

G447T/445T STD - FOOTED - SIDE-CENTER C/B - F2 MOUNT

617427-008

## DUTY MASTER ALTERNATING CURRENT MOTORS

SQUIRREL-CAGE INDUCTION

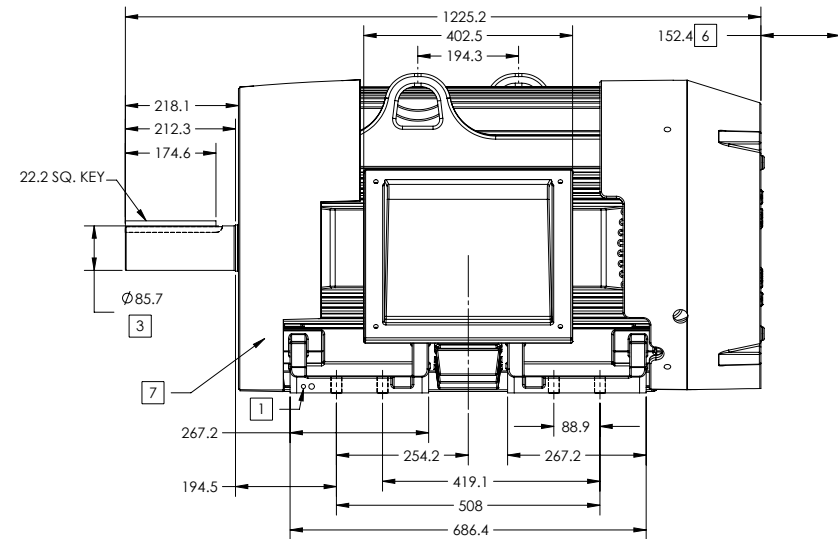
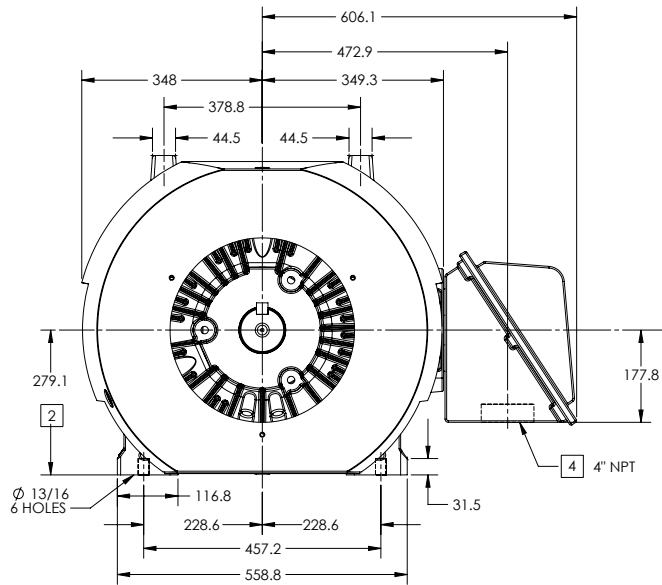
ENCLOSURE: TOTALLY ENCLOSED

FRAME G447T ABOVE NEMA RATINGS

COOLING: FAN COOLED

MOUNTING: FOOT

INCLUDES 445T FRAME MOUNTING HOLES



1. GROUND HOLES QTY 1 1/2-13 TAP; QTY 1 3/8-16 TAP
2. VARIES +.00,-.06
3. VARIES +.000,-.001
4. ON STANDARD MOTORS THIS IS CONDUIT SIZE. ON XT AND CORROSION PROOF MOTOR THIS IS PIPE TAP.
5. MOTOR WEIGHTS MAY VARY BY 15% DEPENDING ON RATING.
6. OBSTRUCTION MUST NO ENCROACH ON AIR INLET.
7. AIR DEFLECTOR INSTALLED WHEN REQUIRED.

**5** WEIGHT (KGS): 1185

DRIVE END AIR DEFLECTOR IS ONLY INCLUDED WHEN NECESSARY.

DIMENSIONS ARE IN MILLIMETERS; SEE SHEET 1 FOR DIMENSIONS IN INCHES

CUSTOMER IS RESPONSIBLE FOR DETERMINING THAT MOTOR PERFORMANCE IS SUITABLE IN THE APPLICATION.

CONDUIT BOX LOCATED ON OPPOSITE SIDE WHEN F-1.  
IF MOUNTING CLEARANCE DETAILS ARE REQUIRED, CONSULT FACTORY.  
MAXIMUM PERMISSIBLE SHAFT RUNOUT WHEN MEASURED AT END OF  
STANDARD SHAFT EXTENSION IS .003" T.I.R. TO 5 INCH DIA.

SHEET NUMBER  
2 OF 2

800-2727119

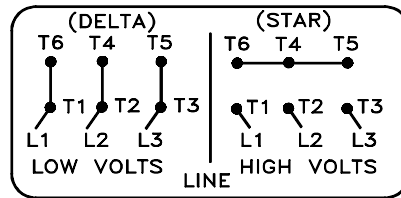
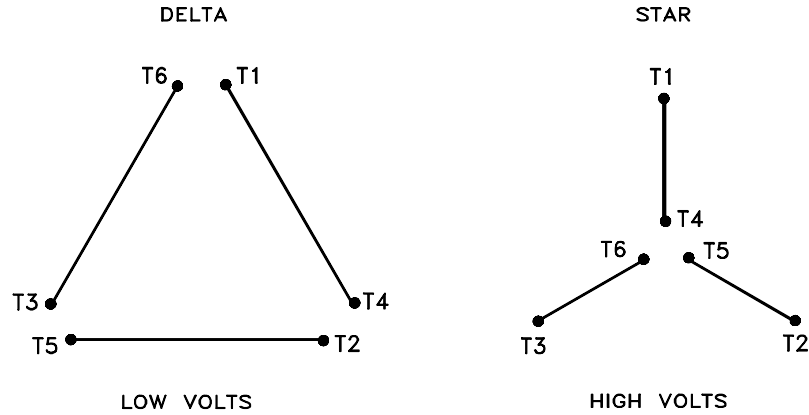
REV. DESC-INITIAL RELEASE			
REV: -	VERSION: 00	REVISED: 10/23/06 07/23/2012	TDR: 00000749386
MODEL NO. 617427-008		REF:	
BY: MGHWC	Material:		

**BALDOR**

G447T/445T STD - FOOTED - SIDE/CENTER C/B - F2 MOUNT

416820-004

A-C MOTOR  
CONNECTION DIAGRAM  
STANDARD 6 LEAD (DELTA/STAR CONNECTED)  
DUAL VOLTAGE (LOW VOLTS/HIGH VOLTS)



(N.P. 1767-CC)

416820-004

REV. DESC: ADDED CLASSIFICATONS		
REV. LTR: B	VERSION: 02	TDR: 000000539297
FILE: \RSN\00017\950	REVISED: 11:58:09 05/04/2010	
MTL: -	BY: RAGRA	

**BALDOR**

A-C MOTOR CONNECTION DIAGRAM

SH 1 of 1