

BALDOR® • **RELIANCE**

Product Information Packet

VEBM3248T

5HP, 1750RPM, 3PH, 60HZ, 184TC, 3640M, OPEN, F1

| Part Detail | | | | | | | |
|-------------|-------|----------------|-------|-------------|----------|---------------|------------|
| Revision: | B | Status: | PRD/A | Change #: | | Proprietary: | No |
| Type: | AC | Prod. Type: | 3640M | Elec. Spec: | 36WGS270 | CD Diagram: | CD0005 |
| Enclosure: | OPEN | Mfg Plant: | | Mech. Spec: | 36E035 | Layout: | 36LYE035 |
| Frame: | 184TC | Mounting: | F1 | Poles: | 04 | Created Date: | 10-12-2015 |
| Base: | N | Rotation: | R | Insulation: | F | Eff. Date: | 04-25-2016 |
| Leads: | 9#16 | | | | | Replaced By: | |
| Literature: | | Elec. Diagram: | | | | | |

| Nameplate NP1259L | | | | | | | | | | |
|-------------------|--------------|--|------|----|----------------|------|--|----|----|---|
| CAT.NO. | VEBM3248T | | | | | | | | | |
| SPEC. | 36E035S270G2 | | | | | | | | | |
| HP | 5 | | | | | | | | | |
| VOLTS | 230/460 | | | | | | | | | |
| AMP | 13.2/6.6 | | | | | | | | | |
| RPM | 1750 | | | | | | | | | |
| FRAME | 184TC | | | | HZ | 60 | | | PH | 3 |
| SER.F. | 1.15 | | CODE | J | DES | B | | CL | F | |
| NEMA-NOM-EFF | 89.5 | | PF | 80 | | | | | | |
| RATING | 40C AMB-CONT | | | | | | | | | |
| CC | 010A | | | | USABLE AT 208V | | | 14 | | |
| DE | 6206 | | | | ODE | 6205 | | | | |
| ENCL | OPEN | | SN | | | | | | | |

| Parts List | | |
|-------------|--|----------|
| Part Number | Description | Quantity |
| SA308902 | SA 36E035S270G2 | 1.000 EA |
| RA296238 | RA 36E035S270G2 | 1.000 EA |
| 36CB3004 | 36 CB CASTING W/1.09 DIA LEAD HOLE @ 6:0 | 1.000 EA |
| 51XB1016A08 | 10-16X 1/2HXWSSLD SERTYB | 2.000 EA |
| 11XW1032G06 | 10-32 X .38, TAPTITE II, HEX WSHR SLTD U | 1.000 EA |
| HW3001B01 | BRASS CUP WASHER, FOR #8 SCREW | 1.000 EA |
| 36EP1403A16 | FR EP, 182-4C OPEN W/BRAKE W/O TIGHTSLEE | 1.000 EA |
| HW4500A01 | 1641B(ALEMITE)400 UNIV, GREASE FITT | 1.000 EA |
| HW5100A05 | WVY WSHR F/205 & 304 BRGS | 1.000 EA |
| 36PE3403A03 | PUEP ASSEMBLY FOR ROUTING PURPOSES | 1.000 EA |
| 36AD2000 | AIR BAFFLE | 1.000 EA |
| 60XW0632A06 | 6-32 X 3/8 TORX HEAD SCREW TAPTITE II | 4.000 EA |
| HW4500A01 | 1641B(ALEMITE)400 UNIV, GREASE FITT | 1.000 EA |
| 10XN2520A28 | 1/4-20X 1 3/4 HEX HD | 4.000 EA |
| HW1001A25 | LOCKWASHER 1/4, ZINC PLT .493 OD, .255 I | 4.000 EA |
| HW2501D08 | KEY, 3/16 SQ X .875 AUTO | 1.000 EA |
| 36CB4516 | 36 LIPPED CB LID | 1.000 EA |
| 51XW0832A07 | 8-32 X .44, TAPTITE II, HEX WSHR SLTD SE | 4.000 EA |
| HW2501E16 | 3KEY, 1/4 SQ X 1.750 | 1.000 EA |
| HA7000A02 | KEY RETAINER RING, 1 1/8 DIA, 1 3/8 DIA | 1.000 EA |
| 85XU0407S04 | 4X1/4 U DRIVE PIN STAINLESS | 2.000 EA |
| HW3200A01 | 3/8-16X3/4 I-BLT WELDED F/S | 1.000 EA |
| MJ1000A02 | GREASE, POLYREX EM EXXON (USe 4824-15A) | 0.050 LB |
| 84XN3816J28 | HEX SOC HD, 3/8-16 X 1.75 LONG | 2.000 EA |

| Parts List (continued) | | |
|-------------------------------|--|-----------------|
| Part Number | Description | Quantity |
| MG1000Y03 | MUNSELL 2.53Y 6.70/ 4.60, GLOSS 20, | 0.022 GA |
| HA3101A29 | THRUBOLT- 1/4-20 X 13.000 X | 4.000 EA |
| 76BK4100DQF | 1-056-041-00-DQF BRAKE TDR# 79345 | 1.000 EA |
| LB1115N | LABEL,LIFTING DEVICE (ON ROLLS) | 1.000 EA |
| LC0005E01 | CONN.DIA./WARNING LABEL (LC0005/LB1119N) | 1.000 EA |
| NP1259L | ALUM SUPER-E UL CSA-EEV CC NEMA PREMIUM | 1.000 EA |
| G0PA1000 | PKG GRP, PRINT PK1026A06 | 1.000 EA |
| PK3082 | STYROFOAM CRADLE | 1.000 EA |
| MN416A01 | TAG-INSTAL-MAINT no wire (1200/bx) 11/14 | 1.000 EA |

AC Induction Motor Performance Data

Record # 53360 - Typical performance - not guaranteed values

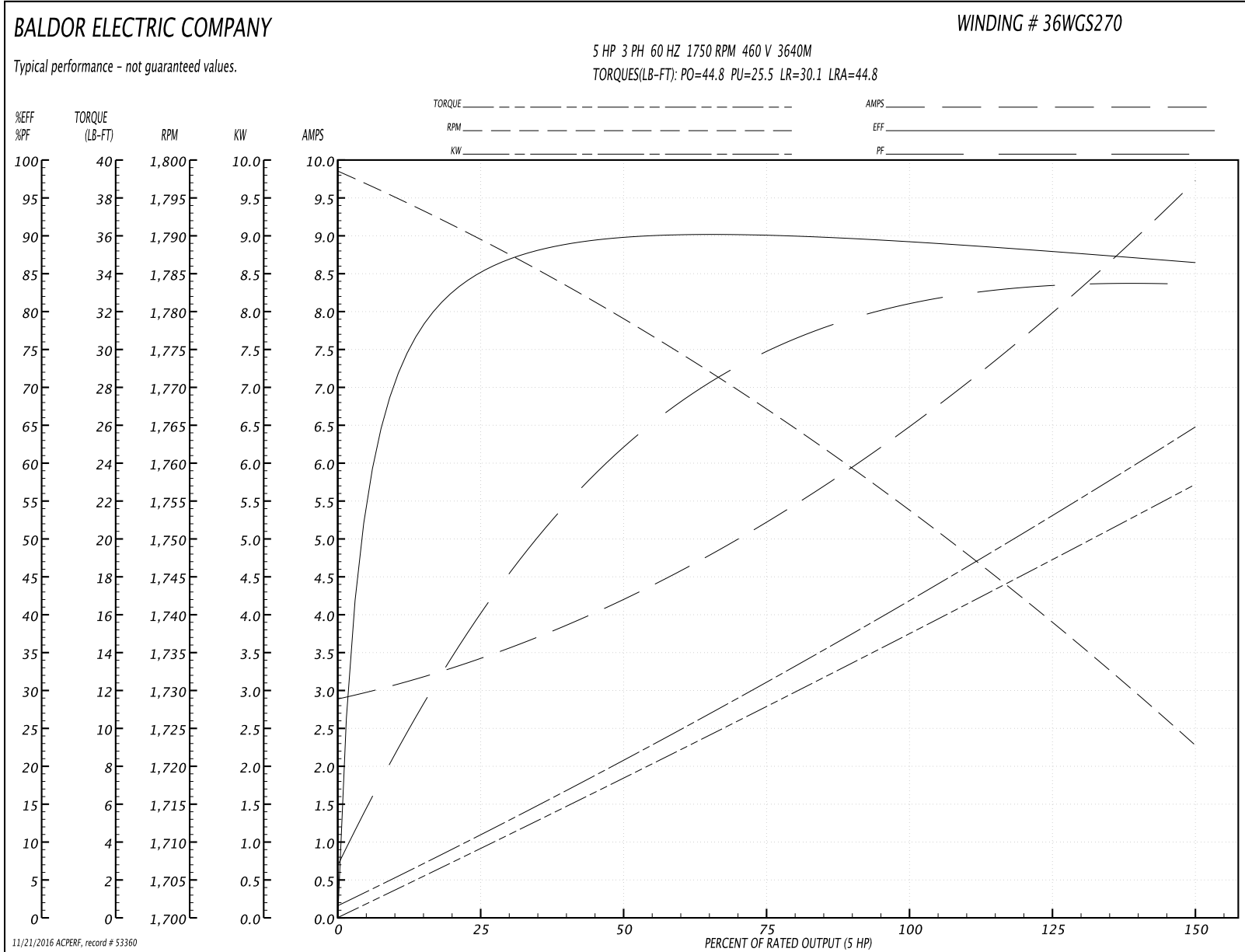
| | | |
|-------------------------------|--------------------|------------------------|
| Winding: 36WGS270-R004 | Type: 3640M | Enclosure: OPSB |
|-------------------------------|--------------------|------------------------|

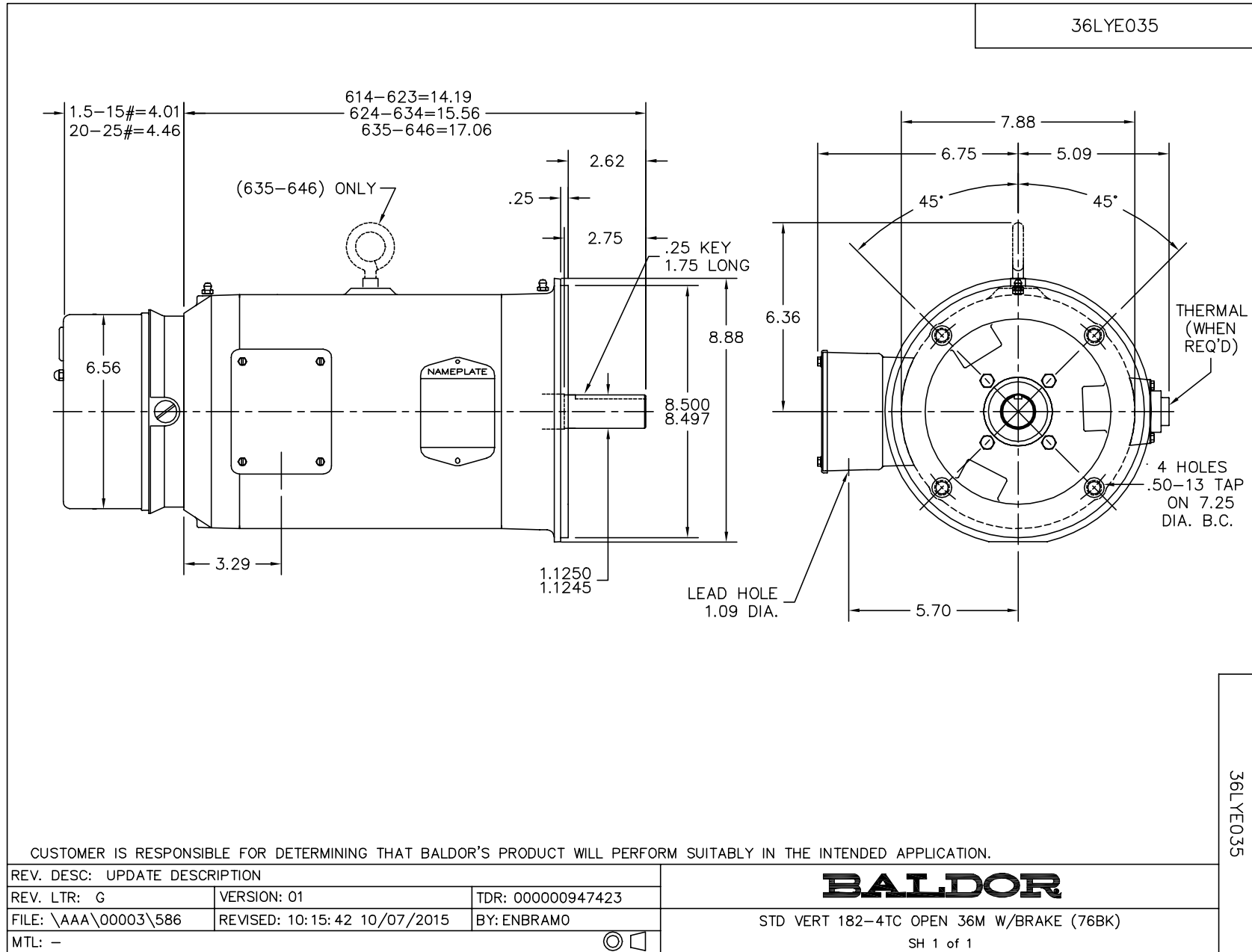
| Nameplate Data | | | | 460 V, 60 Hz: High Voltage Connection | |
|-----------------------|--------------|--------------|----|--|--------------------------|
| Rated Output (HP) | 5 | | | Full Load Torque | 15.05 LB-FT |
| Volts | 230/460 | | | Start Configuration | direct on line |
| Full Load Amps | 13.2/6.6 | | | Breakdown Torque | 44.8 LB-FT |
| R.P.M. | 1750 | | | Pull-up Torque | 25.5 LB-FT |
| Hz | 60 | Phase | 3 | Locked-rotor Torque | 30.1 LB-FT |
| NEMA Design Code | B | KVA Code | J | Starting Current | 44.8 A |
| Service Factor (S.F.) | 1.15 | | | No-load Current | 2.97 A |
| NEMA Nom. Eff. | 89.5 | Power Factor | 80 | Line-line Res. @ 25°C | 2.632 Ω |
| Rating - Duty | 40C AMB-CONT | | | Temp. Rise @ Rated Load | 44°C |
| S.F. Amps | | | | Temp. Rise @ S.F. Load | 56°C |
| | | | | Locked-rotor Power Factor | 41 |
| | | | | Rotor inertia | 0.372 LB-FT ² |

Load Characteristics 460 V, 60 Hz, 5 HP

| % of Rated Load | 25 | 50 | 75 | 100 | 125 | 150 | S.F. |
|-----------------|--------|--------|--------|--------|--------|--------|------|
| Power Factor | 42 | 64 | 75 | 80 | 83 | 84 | 82 |
| Efficiency | 85.4 | 89.7 | 90.2 | 89.5 | 88.2 | 86.4 | 88.7 |
| Speed | 1789.2 | 1778.5 | 1766.9 | 1753.8 | 1739.5 | 1722.1 | 1745 |
| Line amperes | 3.33 | 4.14 | 5.26 | 6.59 | 8.05 | 9.68 | 7.47 |

Performance Graph at 460V, 60Hz, 5.0HP Typical performance - Not guaranteed values





CD0005



LOW VOLTAGE
(2Y)



LINE

HIGH VOLTAGE
(1Y)



LINE

NOTES:

1. INTERCHANGE ANY TWO LINE LEADS TO REVERSE ROTATION.
2. OPTIONAL THERMOSTATS ARE PROVIDED WHEN SPECIFIED.
3. ACTUAL NUMBER OF INTERNAL PARALLEL CIRCUITS MAY BE A MULTIPLE OF THOSE SHOWN ABOVE.
4. LEAD COLORS ARE OPTIONAL. LEADS MUST ALWAYS BE NUMBERED AS SHOWN.

| | | | |
|---|---------|-------------------------|--------------|
| REV. DESC: REVISE TO SHOW OPTIONAL COLORS | | | |
| REV. LTR: E | BY: JLP | REVISED: 01/19/99 10:15 | TDR: 0171435 |
| 900003 | | FILE: AAA00005140 | MDL: - |
| | | MTL: - | |

BALDOR ELECTRIC Co.

3PH, DV, 9 LEADS

CD0005