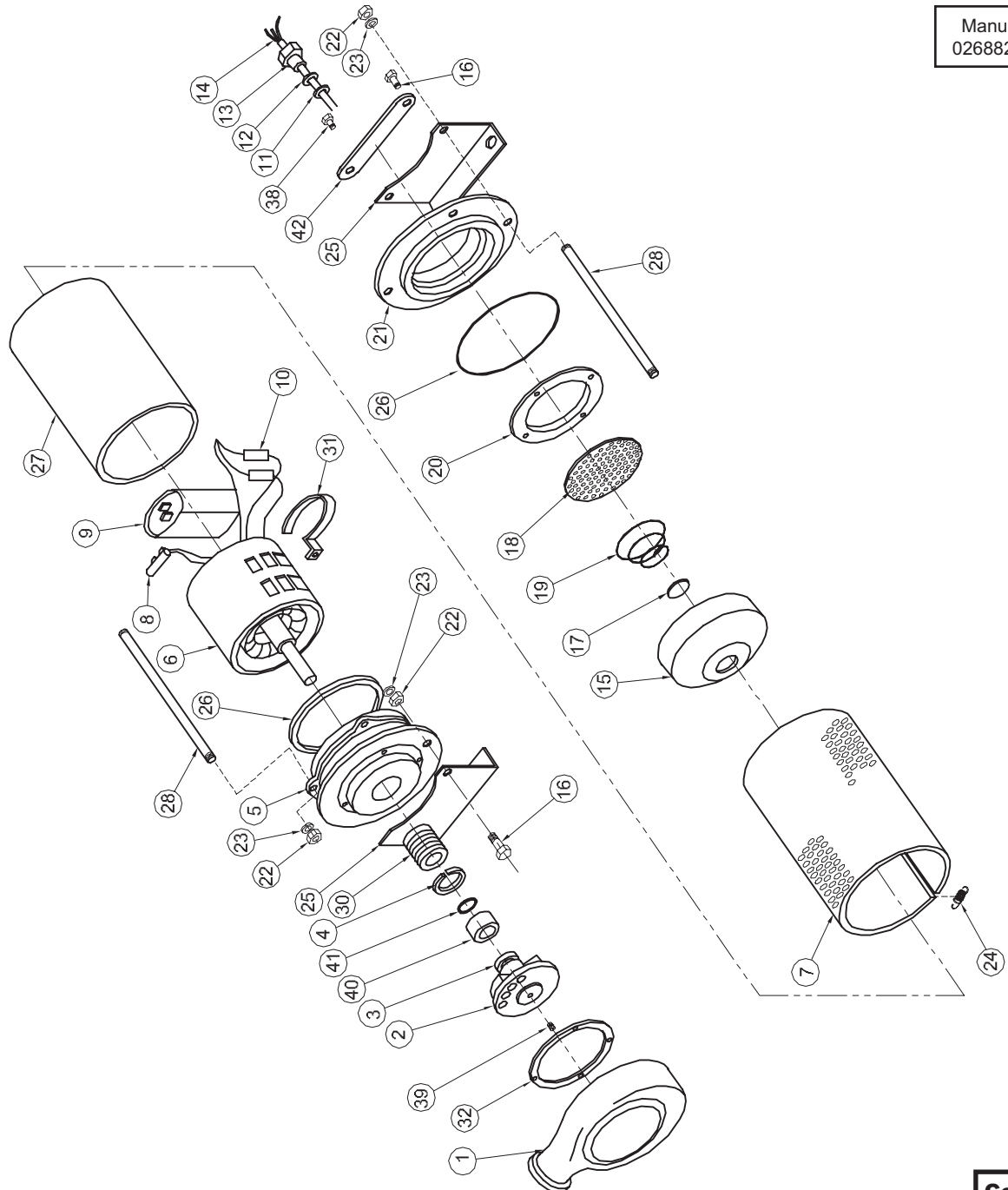


BARNES • PROSSER • CROWN SERVICE PARTS

MODEL	PART NO.	MODEL	PART NO.	MODEL	PART NO.
60Hz:		2P536	087786	50Hz:	
SFU31	087781	2P537	087787	SFU2W2L	093308
SFU51	087782	2P538	087788	SFU3W2L	093309
SFU71	087783	2P539	087789	SFU4W2L	093310
SFU72	087784 - Discontinued			SFU4X2L	093311 - Discontinued
SFU102	087785			SFU6X2L	093312

Manual: 026882
026882A (English)



Continued →

Series: SFU 60 & 50Hz & 2P5

1/3 - 1HP, 3450RPM & .08 - .25kW, 2850RPM
Fountain Pumps

BARNES®

www.cranepumps.com

BARNES • PROSSER • CROWN SERVICE PARTS

PARTS KITS

Repair Kit.....P/N: 085244 (+) 3, 4, 10, 11, 14, 15, 16, 18, 19, 22, 23, 24, 26, 30, 32, 39, 40, 41, 49

Seal Tool Kit.....P/N: 085443

Pressure Gauge Kit...P/N: 085343

PARTS LIST

ITEM	QTY	PART NO.	DESCRIPTION
1	1	093277	Volute
2	1	024331	Impeller, Bronze SFU31, SFU2W2L, 2P536
		024332	SFU51, SFU3W2L, 2P537
		024333	SFU71, SFU72, SFU4W2L,
		024333	SFU4X2L, 2P538
		024334	SFU102, SFU6X2L, 2P539
3	6	024336	Shim, .010
4	1	023702	Retaining Ring
5	1	093279	Intermediate Bearing Sleeve
6	1	023254	Motor SFU31, SFU2W2L, 2P536
		023255	SFU51, SFU3W2L, 2P537
		024308	SFU71, SFU4W2L, 2P538
		023256	SFU72, SFU4X2L
		023257	SFU102, SFU6X2L, 2P539
7	1	086625	Screen, Stainless
8	1	034322	Terminal Boot
9	1	070963	Capacitor 370V, 20MFD
		070965	Capacitor, SFU71, 2P538, SFU4W2L, 370V, 25MFD
10	2	079318	Terminal Connector
11	1	014896	Grommet
12	2	085673	Friction Ring
13	1	026857	Gland Nut
14	1	086039	Cord Set
15	1	019213	Diaphragm
16	10	024337	Hex Hd Screw 1/4-20 x .625" Lg
17	1	030509	Spring Guide
18	1	023699	Screen
19	1	023459	Spring
20	1	019247	Back-Up Ring
21	1	026850	Housing End
22	10	024328	Hex Nut 1/2-20, SB
23	10	023696	Lock Washer 1/4" SB
24	4	023501	Spring
25	2	023316	Pump Support
26	2	016068	O-Ring
27	1	088356	Housing Tube
28	4	023695	Stud 1/4-20 x 11.812, Stainless
30	1	023701	Shaft Seal C/CE/B
31	1	039858	Capacitor Bracket
32	1	024335	Gasket
33	1	022229	Shrink Tube (Not Shown)
38	1	017363	Pipe Plug 1/8" NPT, Bronze
39	1	026155	Slotted Set Screw 7/16-20
40	1	025756	Spacer Seal Buna-N
41	1	056789	V-Ring Buna-N
47	3-1/2 Qts.	029034	Cooling Oil, SFU31, SFU2W2L, 2P536, SFU51, SFU3W2L, 2P537
	3-3/8 Qts.	029034	SFU71, SFU4W2L, 2P538, SFU72, SFU4X2L
	2-7/8 Qts.	029034	SFU102, SFU6X2L, 2P539
49	1	053421	Lock Washer #10, Stainless
51	1	087802	Self Tapping Screw 8-32 x .31" Lg.

End

SECTION 5A
PAGE 2
DATE 6/06

CRANE®

A Crane Co. Company

PUMPS & SYSTEMS

USA: (937) 778-8947 • Canada: (905) 457-6223 • International: (937) 615-3598