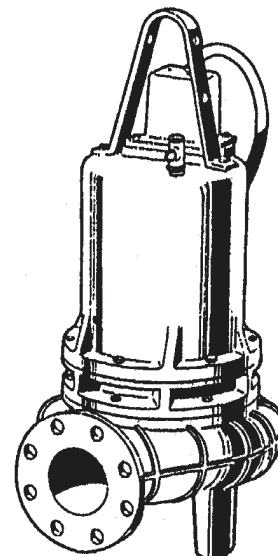


### 4" Horizontal Discharge - Submersible Non-Clog Pumps

<b>DISCHARGE</b>	.....4" 125lb., Flange Horizontal
<b>LIQUID TEMPERATURE</b>	..... 104°F (40°C) Continuous
<b>VOLUTE</b>	..... Cast Iron ASTM A-48, Class 30, With Bronze wear ring
<b>MOTOR HOUSING</b>	..... Cast Iron ASTM A-48, Class 30
<b>SEAL PLATE</b>	..... Cast Iron ASTM A-48, Class 30
<b>IMPELLER:</b>	
<i>Design</i>	.....2 Vane, Enclosed with pump out vanes on back side, Dynamically Balanced, ISO G6.3
<i>Material</i>	..... Cast Iron ASTM A-48, Class 30
<b>SHAFT</b>	.....416 Stainless Steel
<b>SQUARE RINGS</b>	..... Buna-N
<b>DIAPHRAGM</b>	..... Buna-N
<b>HARDWARE</b>	.....300 Series Stainless Steel
<b>LIFTING BAIL</b>	.....304 Stainless Steel
<b>PAINT</b>	..... Air Dry Enamel (Epoxy Optional)
<b>SEAL:</b>	
<i>Design</i>	.....Double Mechanical, Oil filled pressure equalized reservoir
<i>Material</i>	..... Carbon/Ceramic/Buna-N Hardware - 300 Series Stainless
<b>CORD ENTRY</b>	.....40 ft. (12.1 m) Cord. Epoxy Sealed Housing with secondary pressure grommet for sealing and strain relief
<b>SPEED</b>	.....1750 RPM (Nominal)
<b>BEARINGS:</b>	
<i>Upper</i>	..... Single Row, Ball, Oil Lubricated
<i>Load</i>	..... Radial
<i>Lower</i>	..... Single Row, Ball, Oil Lubricated
<i>Load</i>	..... Radial
<i>Life</i>	.....50,000 HR L10 Design
<b>MOTOR:</b>	
<i>Design</i>	..... NEMA L- Single Phase, NEMA B - Three Phase Torque Curve, Oil Filled, Squirrel Cage Induction
<i>Winding</i>	..... Class F, Class H rated Magnet Wire
<i>Service Factor</i>	..... 1.15
<b>SINGLE PHASE</b>	..... Capacitor Start/Capacitor Run. Requires Barnes Starter/Panel which includes capacitors and overload protection
<b>THREE PHASE</b>	..... Tri Voltage motor 200-230/460. Requires Overload Protection to be included in Control Panel, VFD Suitable
<b>MOISTURE SENSOR</b>	..... Normally Open (N/O), Requires relay in control panel
<b>TEMPERATURE SENSOR</b>	..... Normally Closed (N/C), Requires relay in control panel.
<b>OPTIONAL EQUIPMENT</b>	..... Seal Material, Impeller Trims, Additional Cord, Epoxy Paint
<b>RECOMMENDED:</b>	
<i>Accessories</i>	..... Break Away Fitting (BAF) Check Valve Control Panel
<i>Seal Kit PN</i>	..... 130179
<i>Service Kit PN</i>	..... 130175



### Series: 4SE-HL 7.5 - 15HP, 1750RPM, 60Hz



Sample Specifications: Section 1 Page 16.

### DESCRIPTION:

SUBMERSIBLE NON-CLOG SEWAGE PUMP  
DESIGNED FOR TYPICAL RAW SEWAGE  
APPLICATIONS

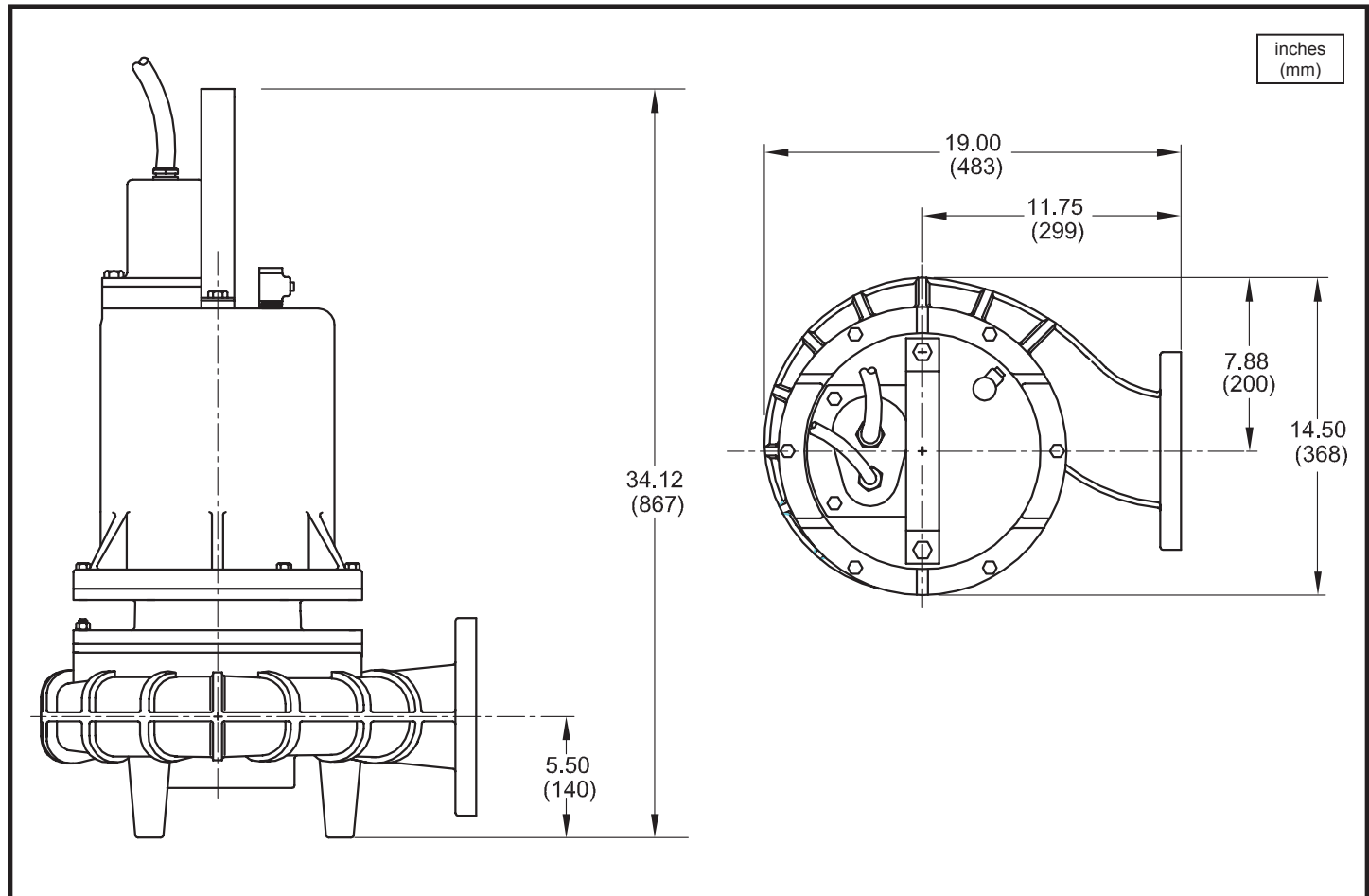
# Series 4SE-L

3" Spherical Solids Handling  
Double Seal

# BARNES®

www.cranepumps.com

## 4" Horizontal Discharge - Submersible Non-Clog Pumps



MODEL NO	PART NO	HP	VOLT/PH	Hz	RPM (Nom)	NEMA START CODE	FULL LOAD AMPS	LOCKED ROTOR AMPS	CORD SIZE	CORD TYPE	CORD O.D inch (mm)
4SE7524HL	084641	7.5	230/1	60	1750	A	39.0	96.0	6/4	SOW	1.06 (27)
4SE7534HL	084642	7.5	230/3	60	1750	D	26.8	80.0	8/4	SOW	0.830 (21)
4SE7544HL	084643	7.5	460/3	60	1750	D	13.4	40.0	8/4	SOW	0.830 (21)
4SE7554HL	089315	7.5	575/3	60	1750	D	10.7	32.0	10/4	SOW	0.750 (19.1)
4SE11334HL	084644	11.3	230/3	60	1750	D	28.0	126.0	8/4	SOW	0.830 (21)
4SE11344HL	084645	11.3	460/3	60	1750	D	14.0	63.0	8/4	SOW	0.830 (21)
4SE11354HL	089316	11.3	575/3	60	1750	D	11.2	50.4	10/4	SOW	0.750 (19.1)
4SE15034HL	084646	15.0	230/3	60	1750	D	38.0	160.0	6/4	SOW	1.06 (27)
4SE15044HL	084647	15.0	460/3	60	1750	D	19.0	80.0	6/4	SOW	1.06 (27)
4SE15054HL	089317	15.0	575/3	60	1750	D	15.2	64.0	8/4	SOW	0.830 (21)

Moisture/Temperature sensor cord for all phase models is 18/5 SOW, 0.476 (12.1mm) O.D.

### IMPORTANT !

- 1.) PUMP MAY BE OPERATED "DRY" FOR EXTENDED PERIODS WITHOUT DAMAGE TO MOTOR AND/OR SEALS.
- 2.) INSTALLATIONS SUCH AS DECORATIVE FOUNTAINS OR WATER FEATURES PROVIDED FOR VISUAL ENJOYMENT MUST BE INSTALLED IN ACCORDANCE WITH THE NATIONAL ELECTRIC CODE ANSI/NFPA 70 AND/OR THE AUTHORITY HAVING JURISDICTION. THIS PUMP IS NOT INTENDED FOR USE IN SWIMMING POOLS, RECREATIONAL WATER PARKS, OR INSTALLATIONS IN WHICH HUMAN CONTACT WITH PUMPED MEDIA IS A COMMON OCCURRENCE.

SECTION 1D  
PAGE 18  
DATE 3/14

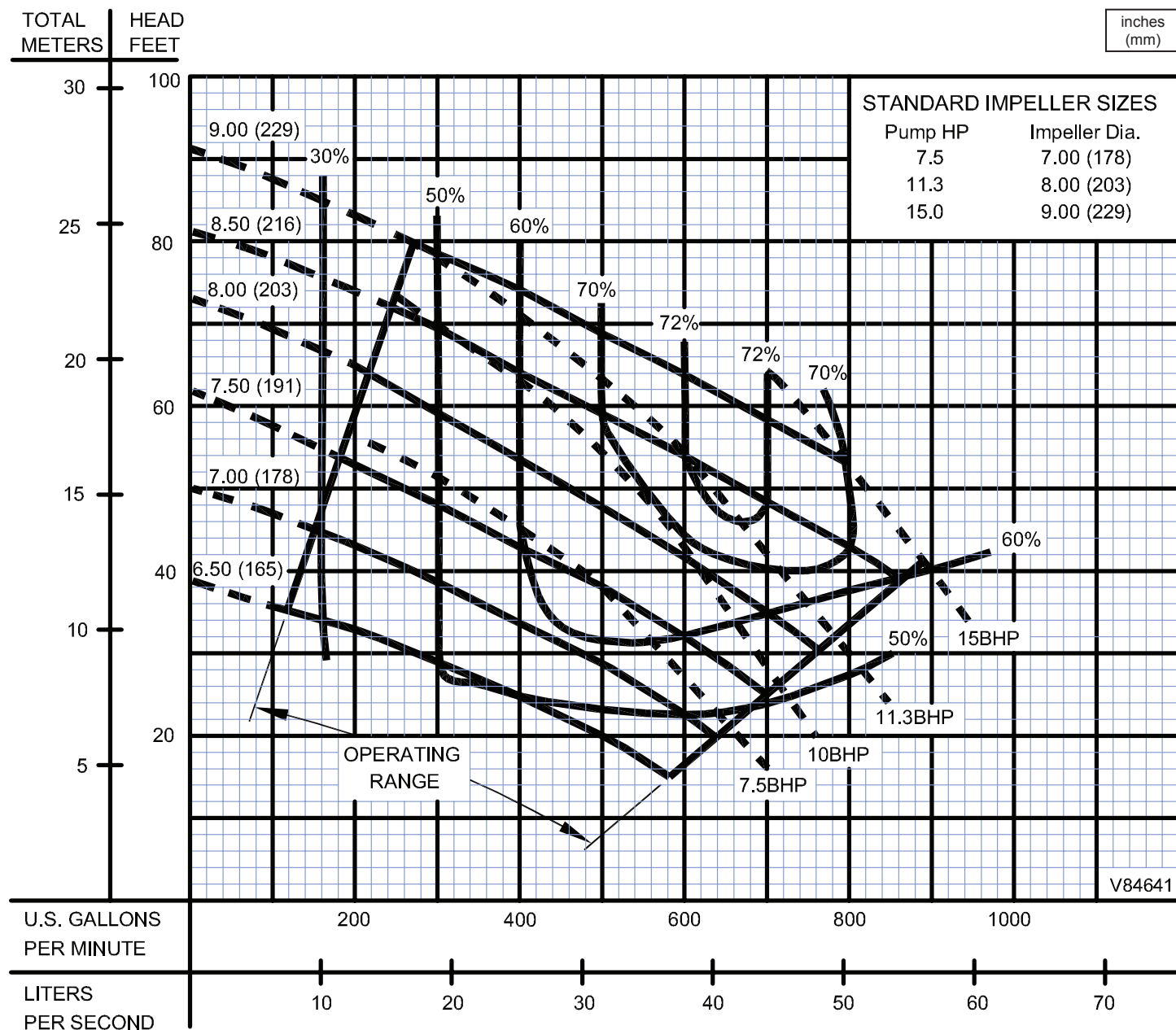
## CRANE®

A Crane Co. Company

## PUMPS & SYSTEMS

USA: (937) 778-8947 • Canada: (905) 457-6223 • International: (937) 615-3598

### 4" Horizontal Discharge - Submersible Non-Clog Pumps



Testing is performed with water, specific gravity 1.0 @ 68° F @ (20°C), other fluids may vary performance