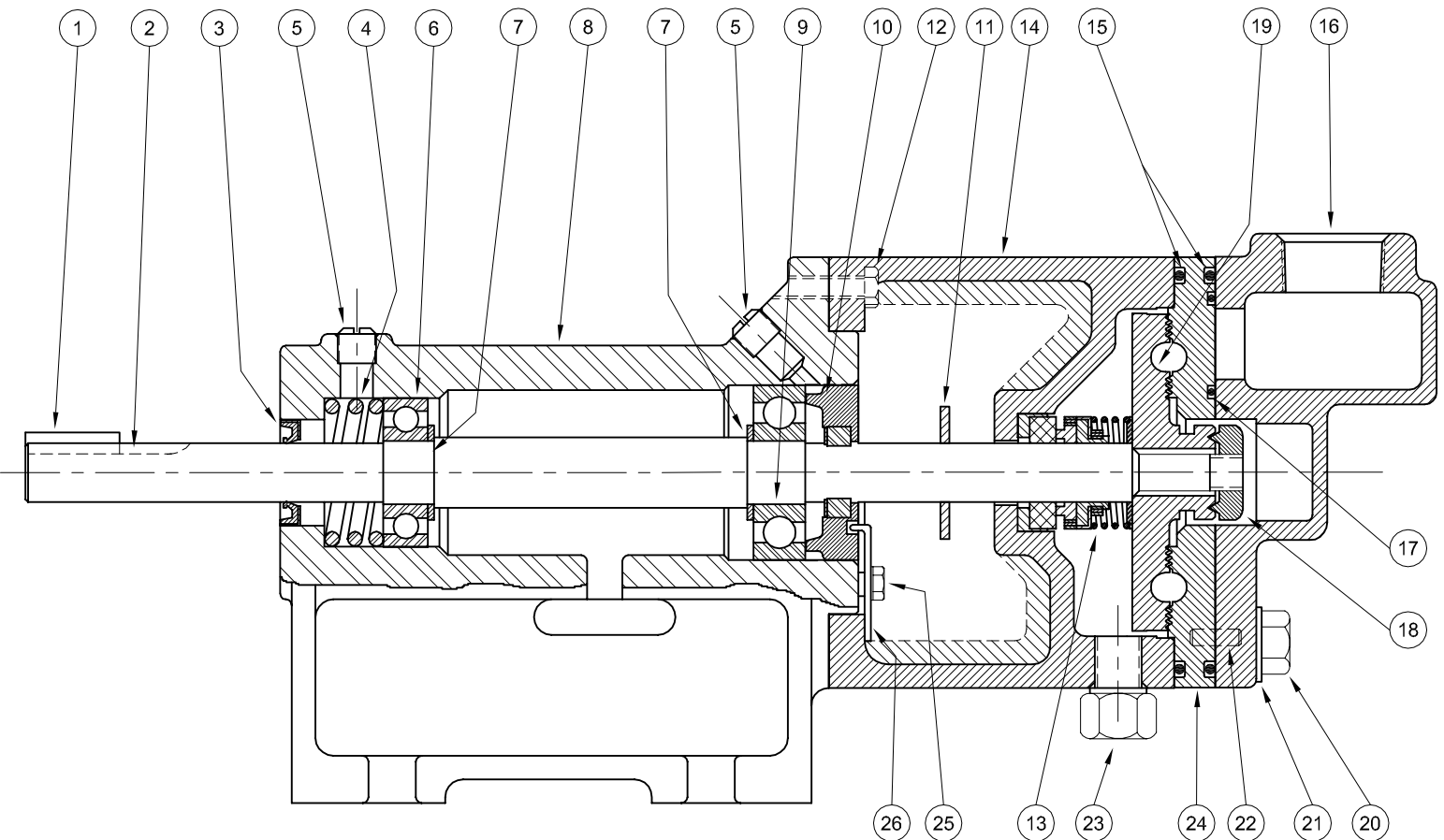


Series: ET
Stainless Steel

BURK'S[®]
www.cranepumps.com

Turbines - Base Mounted



SECTION TBMP
PAGE 82
DATE 2/05

CRANE[®]

A Crane Co. Company

PUMPS & SYSTEMS

USA: (937) 778-8947 • Canada: (905) 457-6223 • International: (937) 615-3598

SYMBOL NUMBER	PART NUMBER	QTY	DESCRIPTION
19	SA09524-A-5	1	Impeller - 5/16 ET5M-SS
	SA09524-A-6	1	Impeller - 3/8 ET6M-SS
	SA09524-A-7	1	Impeller - 7/16 ET7M-SS
20	01928-B	4	Cap Screw
21	20056	4	Washer
22	20101	1	Locating Pin
23	04236-A	1	Pipe Plug - 1/4"
24	20706-5	1	Raceway - ET5M-SS
	20706-6	1	Raceway - ET6M-SS
	20706-7	1	Raceway - ET7M-SS
25	07577	1	Screw
26	07576	1	Lock, Adjusting Screw
	22927	1	Power Frame Assy (Includes symbols 1 thru 11)

(*) For hot water or caustic service.

NOTE 1: Impeller and Raceways **must** be ordered as a set. NOT available individually.

NOTE 2: For pumps manufactured prior to MARCH of 1985 call factory for power frame parts availability.

SYMBOL NUMBER	PART NUMBER	QTY	DESCRIPTION
1	01420	1	Key
2	22926	1	Shaft
3	09529	1	Oil Seal
4	09528	1	Spring
5	01691	2	Plug, 1/8"
6	00629	1	Ball Bearing
7	02726	2	Washer - Bearing Back Up
8	22923	1	Bearing Housing
9	21000	1	Ball Bearing
10	09162	1	Impeller Adjusting Screw
11	08105	1	Slinger
12	03121-B	4	Cap Screw
13	08514	1	Mechanical Seal - Buna-N (Std)
	09762	1	Mechanical Seal - Viton
	20764-C	1	Mechanical Seal - EPT*
14	09521-C	1	Frame (for mechanical seal)
15	09530	2	O-Ring Gasket - Buna-N (Std)
	09699	2	O-Ring Gasket - Viton
	22134	2	O-Ring Gasket - EPT*
	09530-T	2	O-Ring Gasket - Teflon
16	09525-B	1	Raceway Housing
17	21472	1	O-Ring Gasket - Viton (Std)
	22065	1	O-Ring Gasket - Teflon
18	02258-A	1	Impeller Locknut