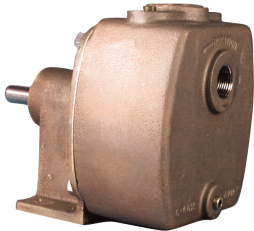


BRONZE OR ALUMINUM SELF-PRIMING CENTRIFUGAL PUMPS

CENTRIFUGAL PUMPS SERIES 30PB

PERFORMANCE



FEATURES

- Self-Priming to 20 Feet Suction Lift
- Rugged Bronze Construction
- Heavy Duty Ball Bearings Suitable for Pulley Drive Applications
- Bronze Models with Nickel Alloy Shaft (30PB-1)
- Ideal for Marine Service. (Air Conditioning, Bilge, and Sea Water Recirculating)
- Can Handle Most Difficult Solvents with Proper Seal Arrangement, Fluoroelastomer (S10) or Polytetrafluoroethylene (PTFE) (S11) available.
- Body O-ring eliminates gasket problems

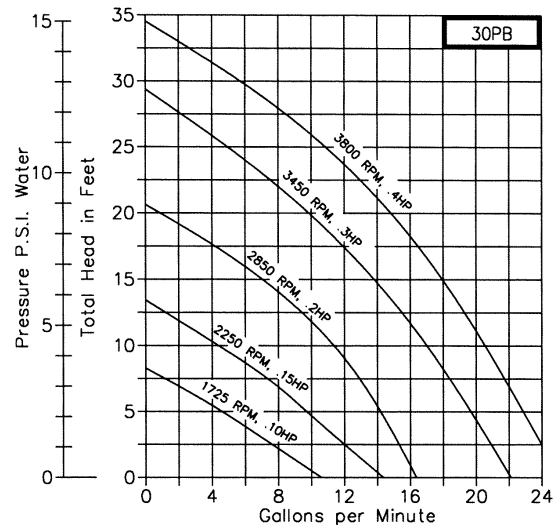
DRIVE

Centrifugal pumps are designed for single rotation and are non reversible. Standard rotation is counter clockwise looking at the pump inlet port (clockwise facing pump shaft). Pedestal centrifugal pumps may be driven by a variety of power sources such as electric motors, hydraulic motors, air motors or gasoline engines. A flexible coupling is used for in line drives, but V-belt drives are also common as an economical method to obtain a different pump speeds. Self priming centrifugal pumps must be operated in the horizontal position.

LIQUIDS AND TEMPERATURE

Bronze pumps are suitable for most common liquids in the pH range from 4-11. If in doubt consult with factory or check the Oberdorfer™ Chemical Resistance Guide booklet. The temperature limit for bronze pumps is 212F. Higher temperatures are possible with fluoroelastomer or Polytetrafluoroethylene (PTFE) seals. Centrifugal pumps are not well suited for pumping viscous liquids. Viscosities up to 2000 SSu may be handled resulting in reduced performance and efficiency.

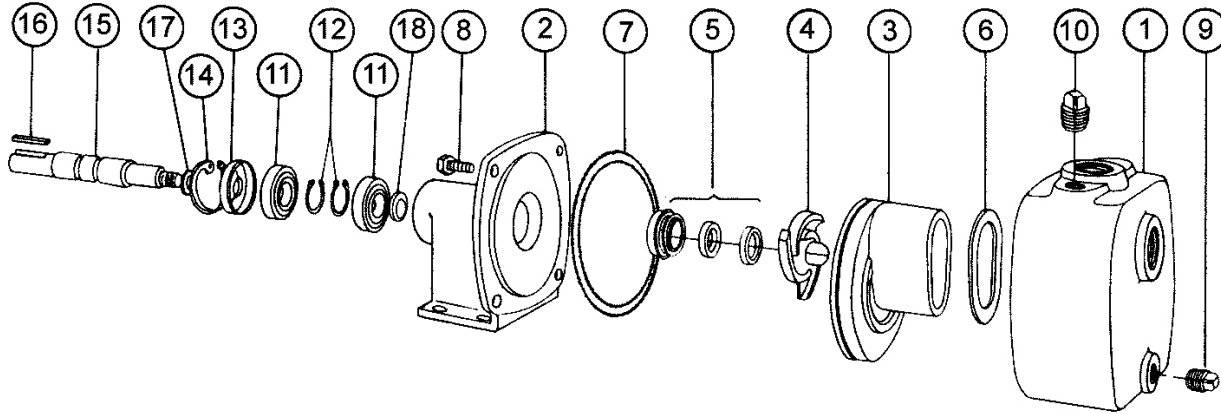
Pump seal is mechanical carbon face type mated to ceramic wear face for maximum durability. Other seal components are made of Nitrile with low swell characteristics for compatibility with a wide range of liquids including many chemicals and solvents.



SUCTION LIFT

Up to 22 gallons per minute water flow and suction lift of 15 feet without a foot or check valve (25 foot suction lift using a foot or check valve and a filled inlet line). A 1/2" pipe plug on the tank top is for initial filling of priming chamber and inlet line--pump priming is automatic thereafter.

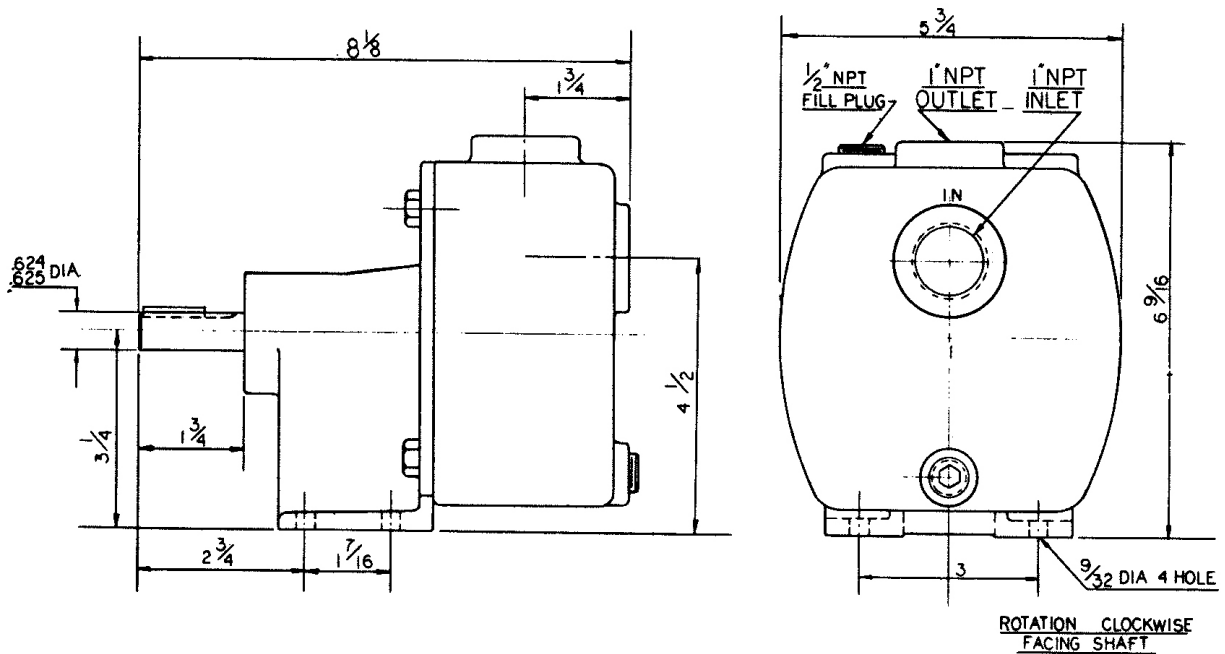
EXPLODED VIEW AND PARTS LIST



Pump No.	1	2	3	4 ¹	5 ¹	6 ¹	7 ¹	8	9	10	11	12	13	14	15	16	17	18	Repair Kit
	Body	Pedestal	Diffuser	Impeller	Seal Assy.	Gasket Diffuser	Gasket Flange	Screw	Plug	Plug	Ball Bearing	Ret. Ring	Lip Seal	Ret. Ring	Shaft	Key	Shim	Slinger	
	1 Req'd	1 Req'd	1 Req'd	1 Req'd	1 Req'd	1 Req'd	1 Req'd	4 Req'd	1 Req'd	1 Req'd	2 Req'd	2 Req'd	1 Req'd	1 Req'd	1 Req'd	1 Req'd	1 Req'd	1 Req'd	
30PB	7190	7445	7192	7193	32155	6021	6022	5411	7321	7443	5928	5926	6609	5925	7037	6567	6025	7447	10865

¹ Items 4, 5, 6, & 7 are included in the Repair Kit.

DIMENSIONS



SEAL OPTIONS

(Note: Seal and shaft modifications below are not physically interchangeable. Consult factory for modification data.)

Fluoroelastomer a Solvent Mechanical Seal: Mechanical seal for oils, fuels, lubricants, most mineral acids, and many solvents that attack other rubbers such as Carbon Tetrachloride, toluene, benzene, and xylene.

Polytetrafluoroethylene (PTFE) Mechanical Seal: For virtually all industrial chemicals, corrosives and solvents - as limited by compatibility of basic pump metal of construction

ADDITIONAL

Pump	Material
30PB	Bronze with Stainless Steel Shaft

Discharge Pressure		3450 RPM Suction Lift				
Feet	Equiv. P.S.I.	0 Ft.	5 Ft.	10 Ft.	15 Ft.	20 Ft.
0	0	22	20	17	14	10
5	2.2	20	17	14	10	5
10	4.3	17	14	10	5	---
15	6.5	14	10	5	---	---
20	8.7	10	5	---	---	---
25	10.8	5	---	---	---	---
30	13.0	3	---	---	---	---
35	15.2	1	---	---	---	---