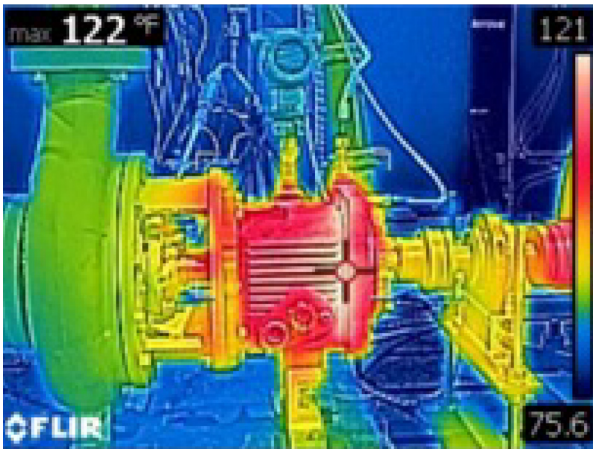
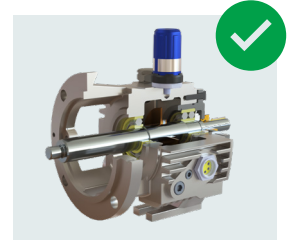
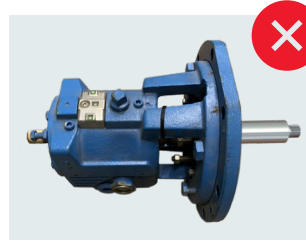


Are you suffering from Poor Pump Reliability?

The Pumpworks ANSI (PWA) GEN 2 Power Frame Upgrade program is your reliability solution. Upgrade your old compatible Power Frame for a brand new PumpWorks ANSI Power Frame and realize an immediate increase in mean time between failures.

| PumpWorks GEN 2 Power Frame Upgrade Benefits:

- 5-Year warranty on complete PWA Power Frame purchases
- Every PWA Power Frame is inspected and assembled in the USA
- Genuine SKF inboard radial and outboard thrust bearings
- Consolidates storeroom parts and reduces repair expense
- Parts interchangeable with many ANSI brands
- Decreases repair turnaround time



| PumpWorks GEN 2 Power Frame Benefits:

Predict-Plus: Compatible with the Predict-Plus continuous condition monitoring system. Sold separately—ask for details!

External Cooling Fins: The ribbed power frame provides larger external surface area, increasing oil cooling.

Splash Lubrication: The integral oil slinger provides superior lubrication to the bearings, while reducing the viscous drag in the roller elements.

Greater Surface Area: Splash lubrication sprays the oil on all interior bearing frame surfaces, increasing the cooling area and improving heat transfer to the outside environment.

Sealed Bearing Frame: The PWA bearing frame is sealed using ISOMAG bearing isolators. This increases your reliability by eliminating outside dust and humidity from compromising your oil quality.

Results: These PWA features resulted in a 22°–23°F lower oil temperature for the PWA in a head to head comparison with our competition.



Power Frame Upgrade Details:

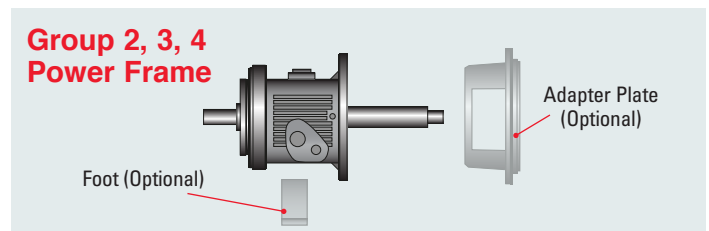
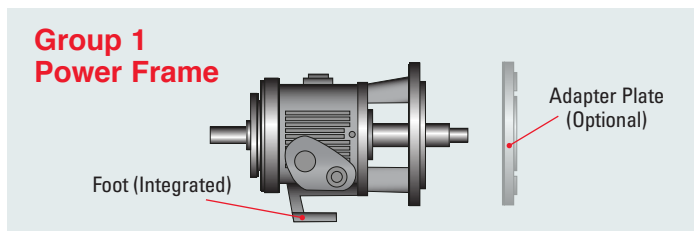
Receive a discount by trading in your old Power Frame for a new PWA:

- One part number & upgrade price for each Power Frame size
- Solid (standard) or sleeved shafts available—you pick
- DXP stocked and ready for immediate shipment
- DXP discards old, upgraded Power Frame
- Optional Power Frame foot and adapters sold separately



Size	Description	Power Frame Part Number
Group 1 (S)	1.375" 316 SS solid shaft	102-00885-0000 (102-00889-0000 316 SS sleeved)
Group 2 (M)	1.750" 316 SS solid shaft	102-00886-0000 (102-00890-0000 316 SS sleeved)
Group 3 (L)	2.125" 316 SS solid shaft	102-00887-0000 (102-00891-0000 316 SS sleeved)
Group 4 (XL)	2.500" 316 SS solid shaft	102-00888-0000 (102-00892-0000 316 SS sleeved)

Note: Additional sleeve metallurgies available upon request.



Size	Description	Optional Foot Part Number
Group 2,3 (M,L)	8.25" centerline height foot	355-00105-1202
Group 2,3 (M,L)	10" centerline height foot	355-00106-1202
Group 4 (XL)	14.5" centerline height foot	355-00108-1202

Note: Power Frame foot available to be ordered separately, upon request.

Size	Description	Optional Adapter Part Number
Group 1 (S)	8" Power Frame adapter	300-00100-1305
Group 2 (M)	8" Power Frame adapter	300-00101-1000
Group 2,3 (M,L)	10" Power Frame adapter	300-00102-1000
Group 2,3 (M,L)	13" Power Frame adapter	300-00103-1000

Note: Frame adapter & adapter alignment pins available to be ordered separately, upon request. Group 4 Power Frame upgrade part numbers and pricing available upon request.

GEN 2 PumpWorks Power Frame is patented—US Patent 10,288,081.

