

EXPLODED VIEW & PARTS LISTING

Air Operated Double Diaphragm Pump

Model: NDP-20BAN-
CSA Part # 854021



To Purchase:

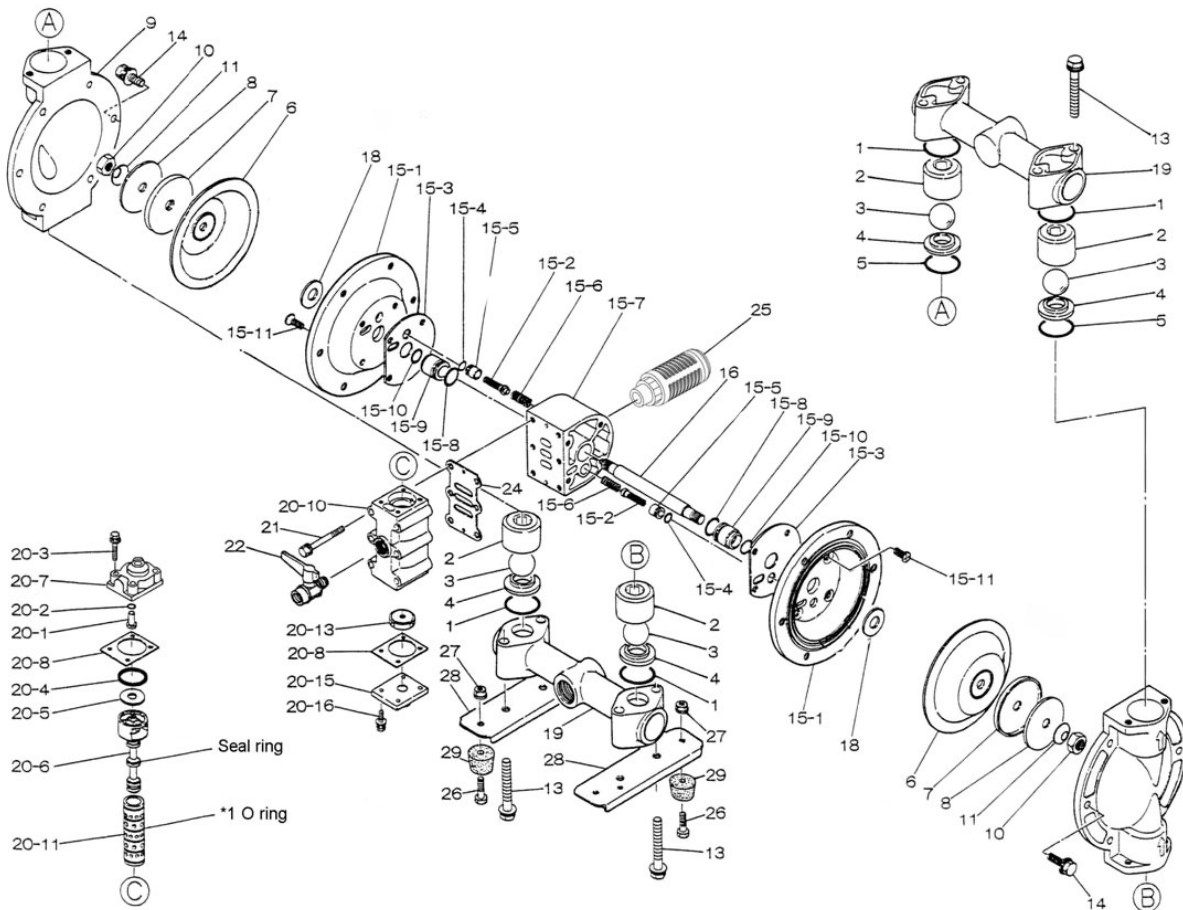
- 800-990-7867
- sales@yamadapump.com
- Find My Rep

More Information:

- YouTube: @yamadapump
- yamadapump.com
- Data Sheets | CAD Drawings | Manuals Literature | BOM | Performance Curves

Note: starting serial # 487505

Trial Program



Air Operated Double Diaphragm Pump



Note: starting serial # 487505

Repair Kits

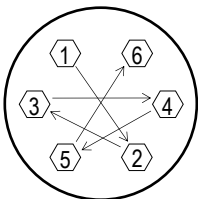
K20-MN-1 Liquid Side Repair Kit

Ref. No.	Description	Qty.	Part No.	Reorder
1	O-ring	4	640036	
3	Ball	4	770720	
5	O-ring	2	640132	
6	Diaphragm	2	772958	

K225-AM Air Side Repair Kit

Ref. No.	Description	Qty.	Part No.	Reorder
18	Cushion	2	771054	
24	Gasket	1	771056	
15-2	Pilot Valve Assy.	2	802360	
15-3	Gasket	2	771057	
15-4	O-ring	2	640009	
15-5	Valve Seat	2	771945	
15-6	Spring	2	708666	
15-8	O-ring	2	685276	
15-9	Throat Bearing	2	772703	
15-10	Packing	2	685414	
20-2	O-ring	1	640005	
20-4	Packing	1	771241	
20-6-seal	Seal Ring	5	771053	
20-8	Gasket	2	771240	
20-11-*1	O-ring	6	771080	
20-13	Cushion	1	771914	

Ref. No.	Description	Qty.	Part No.	Reorder
1	O-ring	4	640036	
2	Ball Guide	4	711700	
3	Ball	4	770720	
4	Valve Seat	4	590086	
5	O-ring	2	640132	
6	Diaphragm	2	772958	
7	Center Disk (liquid side)	2	709153	
8	Plain Washer (liquid side)	2	709152	
9	Out Chamber	2	711686	
10	Nut	2	682263	
11	Coned Disk Spring	2	682730	
13	Bolt	8	682264	
14	Bolt	12	682724	
15	Body Assembly	1	804878	
15-1	Air Chamber	2	715937	
15-2	Pilot Valve Assy.	2	802360	
15-3	Gasket	2	771057	
15-4	O-ring	2	640009	
15-5	Valve Seat	2	771945	
15-6	Spring	2	708666	
15-7	Body	1	709812	
15-8	O-ring	2	685276	
15-9	Throat Bearing	2	772703	
15-10	Packing	2	685414	
15-11	Flat Head Bolt	8	682486	
16	Center Rod	1	709163	
18	Cushion	2	771054	
19	Manifold	2	831280	
20	Valve Body Assembly	1	802362	
20-1	Reset Button	1	709161	
20-2	O-ring	1	640005	
20-3	Bolt	4	682704	
20-4	Packing	1	771241	
20-5	Plain Washer	1	715961	
20-6	C Spool Valve Assy.	1	802400	
20-6-seal	Seal Ring	5	771053	
20-7	Cap	1	710221	
20-8	Gasket	2	771240	
20-10	Valve Body	1	711639	
20-11	Sleeve Assembly	1	803931	
20-11-*1	O-ring	6	771080	
20-13	Cushion	1	771914	
20-15	Cap	1	709305	
20-16	Bolt	4	682262	
21	Bolt	6	682265	
22	Ball Valve	1	686968	
24	Gasket	1	771056	
25	Silencer	1	804697	
26	Bolt	4	611148	
27	Nut with Flange	4	682276	
28	Pump Base	2	709157	
29	Cushion	4	770551	



Tightening torque for center rod and out chambers.

Center Rod 29 ft-lbf (40 N-m)
Out Chambers 10 ft-lbf (12 N-m)

Tightening torque for manifold retainer bolts.

BAN-CSA 13 ft-lbf (18 N-m)

General Tools:

- Socket wrenches - 10mm, 12mm, 13mm, 17mm, 22mm
- Hexagonal box wrench - 5mm
- Open-end wrenches - 22mm
- 713148 - Sleeve Remover

Miscellaneous:

- Assembly Oil - turbine oil none additional class 1 (equivalent to ISO VG32 grade)
- Nuts - M14 x 1.5
- Urea grease grade (NLGI) No. 2
- Lubricants equivalent to Loctite Anti-Seize 767)

Customer Notes

Model #: _____
 Description: _____
 Serial #: _____
 Date Installed: _____
 Department Location: _____
 Tag/Project: _____