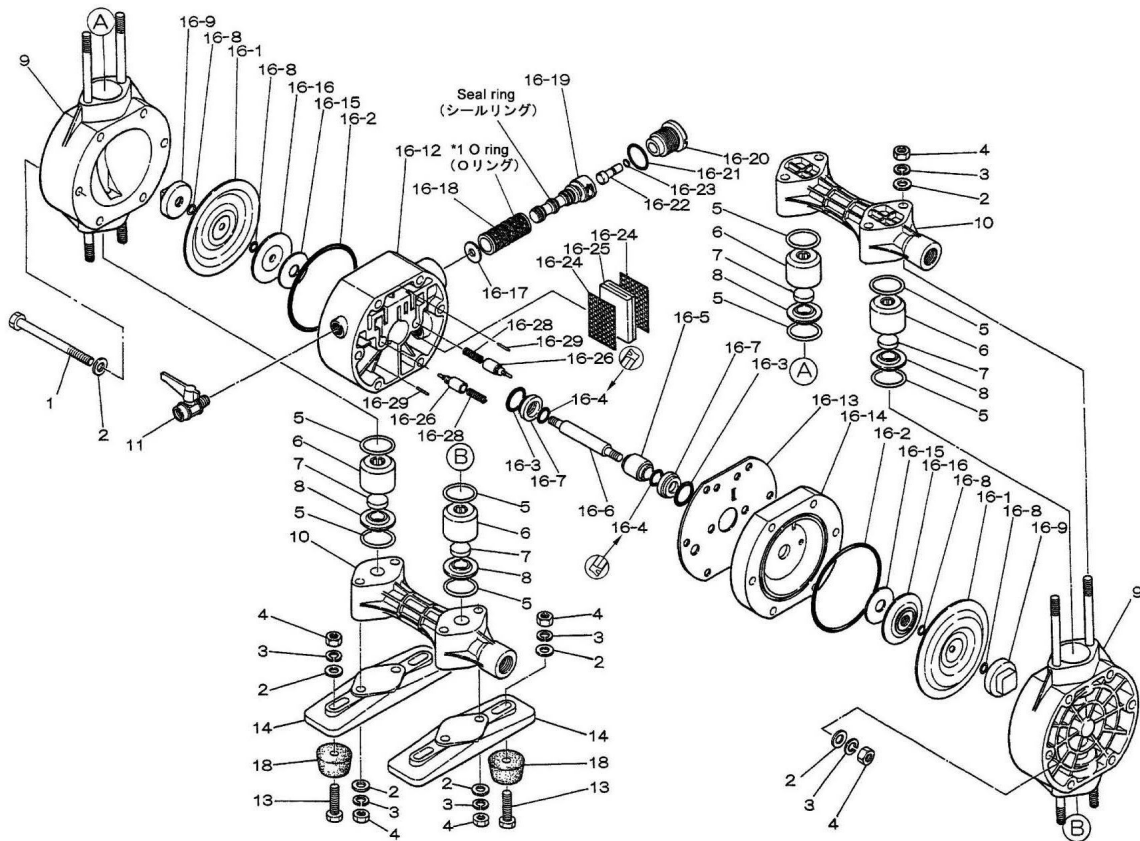


Air Operated Double Diaphragm Pump



## Air Operated Double Diaphragm Pump

## NDP-15FVH NDP-15FVS NDP-15FVT

NPT	852104	852771	852103	** NPT PUMPS **		
REF. No.	PARTS No.	PARTS No.	PARTS No.	DESCRIPTION	QTY.	REORDER
1	684310	684310	684310	BOLT	6	
2	631329	631329	631329	PLAIN WASHER	24	
3	631300	631300	631300	SPRING LOCK WASHER	18	
4	628012	628012	628012	NUT	18	
5	643027	643027	643027	O-RING	8	
6	771632	771632	771632	VALVE STOPPER	4	
7	771762	771762	771762	FLAT VALVE	4	
8	771633	771633	771633	VALVE SEAT	4	
9	780120	780120	780120	OUT CHAMBER	2	
10	780051	780051	780051	MANIFOLD	2	
11	686826	686826	686826	BALL VALVE	1	
13	621153	621153	621153	BOLT	4	
14	771635	771635	771635	BASE	2	
16-1	771372	771972	770933	DIAPHRAGM	2	
16-2	640144	640144	640144	O-RING	2	
16-3	640020	640020	640020	O-RING	2	
16-4	684284	684284	684284	PACKING	2	
16-5	771337	771337	771337	GUIDE	1	
16-6	710578	710578	710578	CENTER ROD	1	
16-7	771336	771336	771336	BUSHING	2	
16-8	-	-	643005	O-RING	4	
16-9	771631	771631	771631	CENTER DISK (OUTER)	2	
16-12	780029	780029	780029	BODY A	1	
16-13	771347	771347	771347	GASKET	1	
16-14	780030	780030	780030	BODY B	1	
16-15	771342	771342	771342	CUSHION	2	
16-16	771344	771344	771344	CENTER DISK (INNER)	2	
16-17	771483	771483	771483	CUSHION	1	
16-18	804249	804249	804249	SLEEVE ASSEMBLY	1	
16-18-*1	683123	683123	683123	O-RING (SLEEVE O.D.)	6	
16-19	802835	802835	802835	C-SPOOL VALVE ASSY.	1	
16-19 seal	771484	771484	771484	SEAL RING	5	
16-20	771695	771695	771695	CAP	1	
16-21	640022	640022	640022	O-RING	1	
16-22	771350	771350	771350	RESET BUTTON	1	
16-23	640002	640002	640002	O-RING	1	
16-24	771589	771589	771589	MESH	2	
16-25	771465	771465	771465	SILENCER	1	
16-26	832141	832141	832141	PILOT VALVE ASSY.	2	
16-28	710577	710577	710577	SPRING	2	
16-29	632752	632752	632752	SPRING PIN	2	
18	770551	770551	770551	CUSHION	4	
KIT	K15-VH-1	K15-VS	K15-VT	Liquid Side Kit		
KIT		K15-AM		Air Motor Kit		

## General Tools:

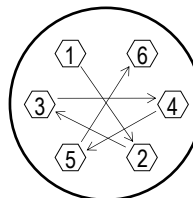
- Socket wrench - 13mm
- Open-end wrenches - 13mm, 21mm
- Plier

## Special Tools (sold separately):

- Cap & disk remover (771132)
- Sleeve remover (713148)

## Miscellaneous:

- Assembly Oil - turbine oil none additional class 1 (equivalent to ISO VG32 grade)
- Nuts - M8 x 1.25
- Urea grease grade (NLGI) No. 2



## Tightening torque for center rod and out chambers.

Center Rod	122 in-lbf {14 N-m}
Out Chambers	105 in-lbf {12 N-m}

## Tightening torque for manifold retainer bolts or nuts.

FVH/S/T	105 in-lbf {12 N-m}
---------	---------------------