

BALDOR® • ***RELIANCE***

Product Information Packet

CEWDM3546T-5

1HP,1745RPM,3PH,60HZ,143TC,3524M,TENV,F1

| Part Detail | | | | | | | |
|-------------|-------|----------------|-------|-------------|----------|---------------|------------|
| Revision: | E | Status: | PRD/A | Change #: | | Proprietary: | No |
| Type: | AC | Prod. Type: | 3524M | Elec. Spec: | 35WGM813 | CD Diagram: | CD0006 |
| Enclosure: | TENV | Mfg Plant: | | Mech. Spec: | 35SS592 | Layout: | 35LYSS592 |
| Frame: | 143TC | Mounting: | F1 | Poles: | 04 | Created Date: | 02-07-2013 |
| Base: | RG | Rotation: | R | Insulation: | F | Eff. Date: | 02-22-2016 |
| Leads: | 3#18 | | | | | Replaced By: | |
| Literature: | | Elec. Diagram: | | | | | |

| Nameplate NP1669L | | | | | | | | | | | |
|-------------------|---------------|--|--|------|----|----------------|------|---|--|-------|---|
| CAT.NO. | CEWDM3546T-5 | | | | | | | | | | |
| SPEC. | 35SS592M813G1 | | | | | | | | | | |
| HP | 1 | | | | | | | | | | |
| VOLTS | 575 | | | | | | | | | | |
| AMP | 1.2 | | | | | | | | | | |
| RPM | 1745 | | | | | | | | | | |
| FRAME | 143TC | | | | | HZ | 60 | | | PH | 3 |
| SER.F. | 1.15 | | | CODE | M | | DES | B | | CLASS | F |
| NEMA-NOM-EFF | 85.5 | | | PF | 76 | | | | | | |
| RATING | 40C AMB-CONT | | | | | | | | | | |
| CC | 010A | | | | | USABLE AT 208V | | | | | |
| DE | 6205 | | | | | ODE | 6203 | | | | |
| ENCL | TENV | | | | SN | | | | | | |
| BLANK | | | | | | | | | | | |

| Parts List | | |
|---------------|--|----------|
| Part Number | Description | Quantity |
| SA258176 | SA 35SS592M813G1 | 1.000 EA |
| RA244952 | RA 35SS592M813G1 | 1.000 EA |
| 35CB3010A01W | 35 CB .75 NPT @ 6:00, WHITE EPOXY | 1.000 EA |
| NS2512A01 | INSULATOR, CONDUIT BOX X | 1.000 EA |
| 35GS1039 | 05 MOLDED GASKET W/LIP, 1.12 LEAD HOLE, | 1.000 EA |
| 51XB1016A08 | 10-16X 1/2HXWSSLD SERTYB | 2.000 EA |
| 11XW1032G06 | 10-32 X .38, TAPTITE II, HEX WSHR SLTD U | 1.000 EA |
| 35EP3100M71MW | SPL FR ENDPLATE -TENV- SP.#9 (WHITE EPOX | 1.000 EA |
| HW4032A01 | BLACK DRAIN PLUG FOR WASH DOWN MOTORS | 3.000 EA |
| HW5100A03SP | WAVY WASHER (W1543-017) | 1.000 EA |
| 35EP3300A48MW | SPL FACE MTD EP - 205 BRG - W/SEAL FOR W | 1.000 EA |
| HW4032A01 | BLACK DRAIN PLUG FOR WASH DOWN MOTORS | 3.000 EA |
| 12XN1032S20 | 10-32 X 1-1/4 HEX M.S. , STAINLESS STEEL | 2.000 EA |
| HW4600B49 | SEAL 0.938 X 1.624 X 0.250 SINGLE LIP DB | 1.000 EA |
| 35CB4522 | 35 LIPPED CB LID PRIMED | 1.000 EA |
| 35GS1030A02 | 35 GS FOR CB LID - WHITE NEOPRENE | 1.000 EA |
| 59XW0832S07 | TAPTITE II,HEX WSHR UNSLTD SER,410 S.S., | 4.000 EA |
| HW4600B46 | V-RING SLINGER 0.875 X 1.420 X .24 VITON | 1.000 EA |
| HW2502D13 | SS KEY, 3/16 SQ X 1.375 | 1.000 EA |
| HA7000A01 | KEY RETAINER 7/8" DIA SHAFT | 1.000 EA |
| MJ5001A27 | 32220KN GRAY SEALER *MIN BUY 4 QTS=1GAL | 0.001 QT |
| 85XU0407S04 | 4X1/4 U DRIVE PIN STAINLESS | 2.000 EA |
| LB1164 | LABEL,WARNING AND DRAIN | 1.000 EA |
| HA5027A01 | HA4066A01 T-DRAIN X2 BAGGED | 1.000 EA |

| Parts List (continued) | | |
|-------------------------------|--|-----------------|
| Part Number | Description | Quantity |
| MJ1000A02 | GREASE, POLYREX EM EXXON (USe 4824-15A) | 0.050 LB |
| MG1025Z02 | ACTIVATOR WILKOFAS 060.02HF | 0.010 GA |
| MG1025W01 | WILKOFAS, 781.01, SIGNAL WHITE #9003 | 0.017 GA |
| HA3100S07 | THRUBOLT 10-32 X 8.375 SS | 4.000 EA |
| LC0006 | CONNECTION LABEL | 1.000 EA |
| NP1669L | SS WD SUPER-E UL CSA-EEV PREM REV MTG | 1.000 EA |
| 35PA1066 | PKG GRP, PRINT PK1008A06 | 1.000 EA |
| MN416A01 | TAG-INSTAL-MAINT no wire (1200/bx) 11/14 | 1.000 EA |

AC Induction Motor Performance Data

Record # 31564 - Typical performance - not guaranteed values

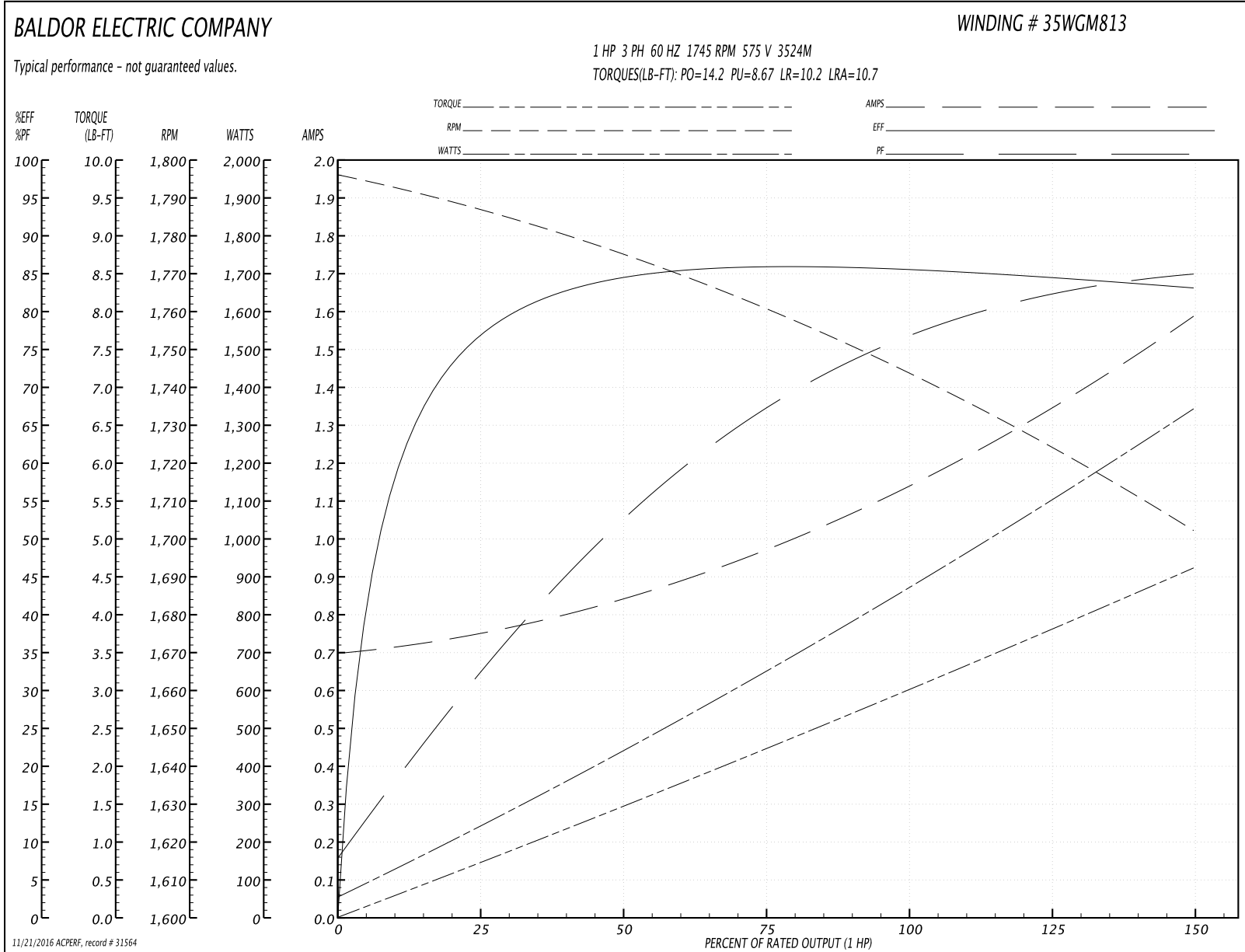
| | | |
|-------------------------------|--------------------|------------------------|
| Winding: 35WGM813-R001 | Type: 3524M | Enclosure: TENV |
|-------------------------------|--------------------|------------------------|

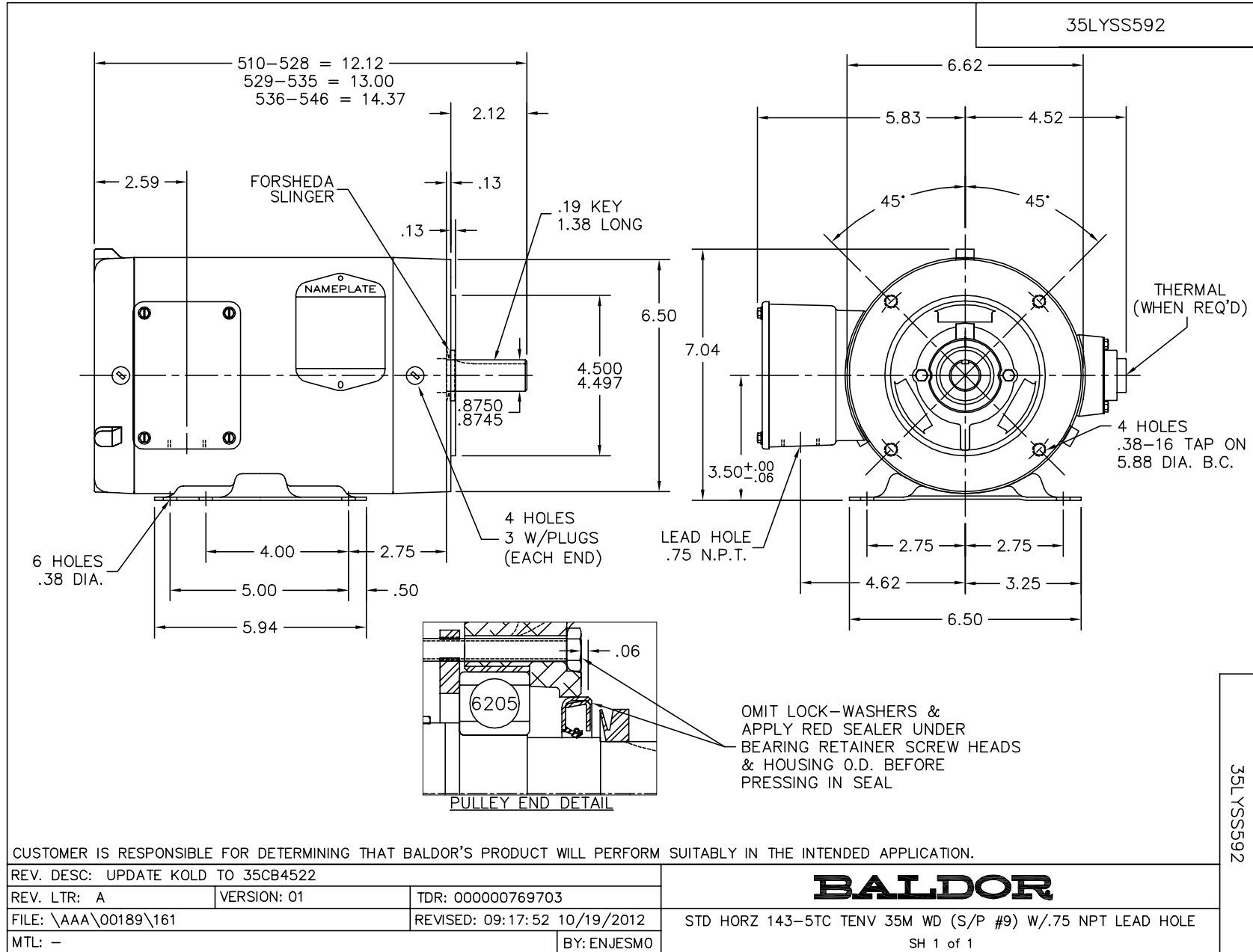
| Nameplate Data | | | | 575 V, 60 Hz: Single Voltage Motor | |
|-----------------------|--------------|--------------|----|---------------------------------------|--------------------------|
| Rated Output (HP) | 1 | | | Full Load Torque | 3.02 LB-FT |
| Volts | 575 | | | Start Configuration | direct on line |
| Full Load Amps | 1.2 | | | Breakdown Torque | 14.2 LB-FT |
| R.P.M. | 1745 | | | Pull-up Torque | 8.67 LB-FT |
| Hz | 60 | Phase | 3 | Locked-rotor Torque | 10.2 LB-FT |
| NEMA Design Code | B | KVA Code | M | Starting Current | 10.7 A |
| Service Factor (S.F.) | 1.15 | | | No-load Current | 0.706 A |
| NEMA Nom. Eff. | 85.5 | Power Factor | 76 | Line-line Res. @ 25°C | 25 Ω |
| Rating - Duty | 40C AMB-CONT | | | Temp. Rise @ Rated Load | 85°C |
| S.F. Amps | | | | Temp. Rise @ S.F. Load | 100°C |
| | | | | Locked-rotor Power Factor | 62 |
| | | | | Rotor inertia | 0.142 LB-FT ² |

Load Characteristics 575 V, 60 Hz, 1 HP

| % of Rated Load | 25 | 50 | 75 | 100 | 125 | 150 | S.F. |
|-----------------|-------|-------|-------|------|------|------|------|
| Power Factor | 32 | 53 | 67 | 76 | 81 | 86 | 79 |
| Efficiency | 76.2 | 83.6 | 85.9 | 85.6 | 85 | 82.8 | 85.2 |
| Speed | 1784 | 1774 | 1760 | 1744 | 1731 | 1698 | 1736 |
| Line amperes | 0.741 | 0.832 | 0.968 | 1.15 | 1.35 | 1.58 | 1.27 |

Performance Graph at 575V, 60Hz, 1.0HP Typical performance - Not guaranteed values





CD0006



NOTES:

1. THREE LEAD MOTOR MAY BE EITHER WYE CONNECTED OR DELTA CONNECTED.
2. INTERCHANGE ANY TWO LINE LEADS TO REVERSE ROTATION.
3. OPTIONAL THERMOSTATS ARE PROVIDED WHEN SPECIFIED.
4. ACTUAL NUMBER OF INTERNAL PARALLEL CIRCUITS MAY VARY.
5. LEAD COLORS ARE OPTIONAL. LEADS MUST BE NUMBERED AS SHOWN.

| | | | |
|---|---------|------------------------|--------------|
| REV. DESC: REVISE TO SHOW OPTIONAL COLORS | | | |
| REV. LTR: D | BY: JLP | REVISED: 01/21/99 4:02 | TDR: 0171435 |
| 9000D | | FILE: AAA00005141 | MDL: - |
| | | MTL: - | |

BALDOR ELECTRIC Co.

3PH, SV, 3 LEADS, WYE OR DELTA CONNECTED

CD0006