

BALDOR® • RELIANCE

Product Information Packet

ECP64316TR-4

75HP, 1780RPM, 3PH, 60HZ, 365T, TEFC, FOOT,

Part Detail							
Revision:	N	Status:	PRD/A	Change #:		Proprietary:	No
Type:	AC	Prod. Type:	A36070M	Elec. Spec:	A36WG0082	CD Diagram:	416820-036
Enclosure:	TEFC	Mfg Plant:		Mech. Spec:		Layout:	617428-022
Frame:	365T	Mounting:	W6	Poles:	04	Created Date:	10-19-2010
Base:		Rotation:	PS	Insulation:	F	Eff. Date:	01-12-2016
Leads:	3#4					Replaced By:	
Literature:		Elec. Diagram:					

Nameplate NP3236										
CAT NO	ECP64316TR-4			SPEC NO.	P36G3369					
HP	75	AMPS	85.9	VOLTS	460		DESIGN	B		
FRAME SIZE	365T	RPM	1780	HZ	60	AMB	40	SF	1.15	
D.E. BRG.DATA	NU313			O.D.E. BRG.DATA	6313		PH	3	DUTY	CONT
D.E. BRG.	65RU03M30X			TYPE	P	ENCL	TEFC	CODE	G	
O.D.E. BRG.	65BC03J30X			POWER FACTOR	86		NEMA-NOM-EFFICIENCY	95.4		
3/4 LOAD EFF.	95.3			MAX CORR KVAR	16.0		GUARANTEED EFFICIENCY	95.0		
TEMP CODE	T3		TEMP =	200		VT HZ	0-60			
CHP HZ	60-90		CT HZ	15-60						
INVERTER-TEMP-CODE	T3									
SER.NO.				MOTOR WEIGHT	959					

Nameplate 000613007EY			
CAT NO	ECP64316TR-4	SPEC NO.	P36G3369
NO. ROTOR BARS	47	GREASE TYPE	MOBIL SHC 220
NO. SLOTS	60	IEEE 85 NOISE LEVEL	90DBA
5 YEAR WARRANTY		MFG. DATE	
NL AMPS AT RATED VOLTAGE	26.6	WINDING RES AT 25 C	.08438
SER.NO			OHMS

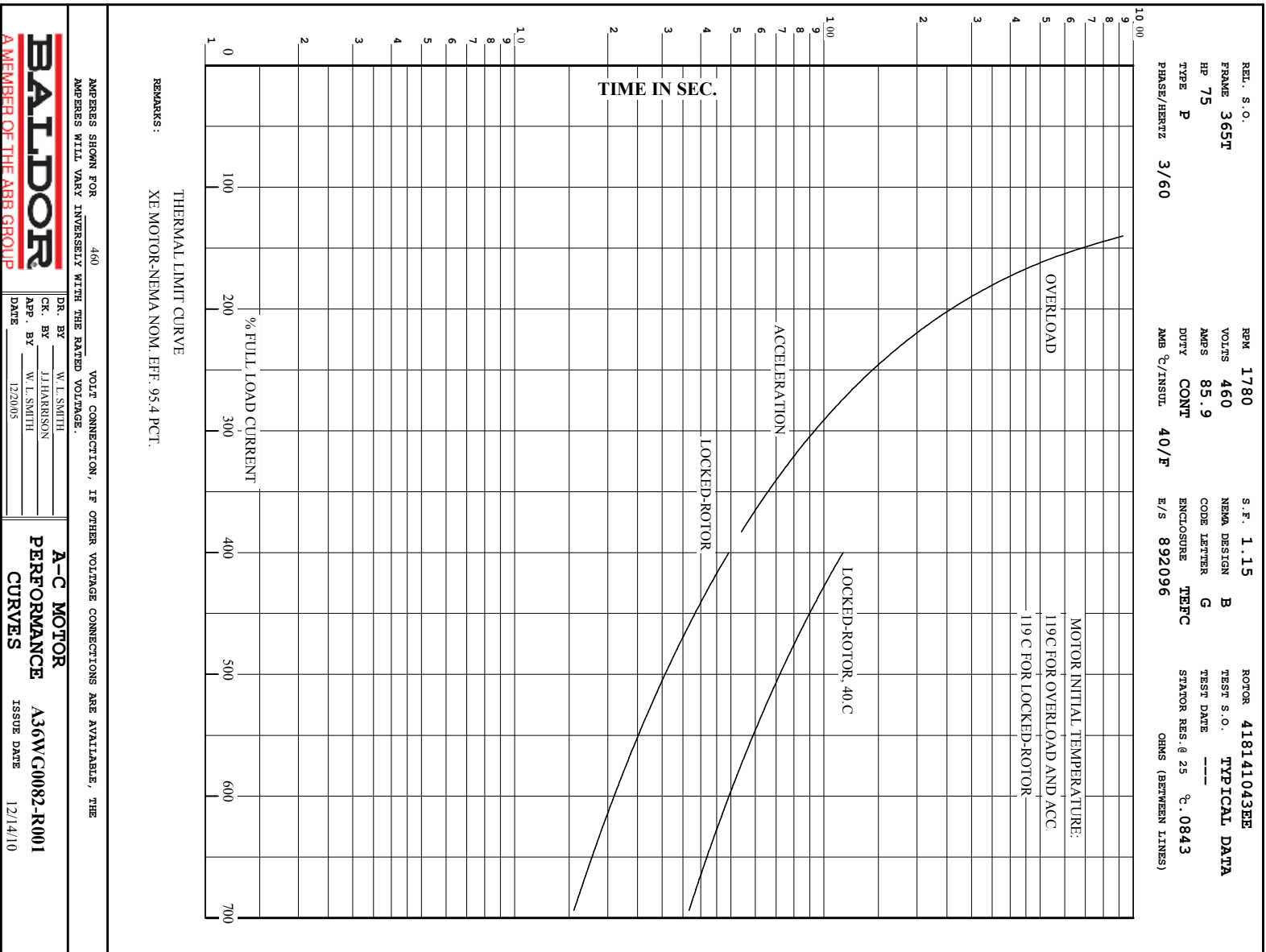
Nameplate 000901002AAA	
AIR COOLED HEAT EXCHANGER MOTOR	
IP55	RCP-609
SUIT FOR 6-60 HZ, VT @ 1.0SF	

Parts List		
Part Number	Description	Quantity
SA206469	SA P36G3369	1.000 EA
RA193736	RA P36G3369	1.000 EA
000613006PU	N/P (RELEASE QTY 10,000) UL CSA LABEL	1.000 EA
NP3236	SS SUPER E INVERTER DUTY IEEE 661	1.000 EA
000613007EY	N/P BALDOR	1.000 EA
000692000JP	N/P	1.000 EA
000692000RT	N/P	1.000 EA
000692000VD	LABEL WARNING	1.000 EA
000692000VH	N/P	1.000 EA
000901002AAA	N/P BLANK	1.000 EA
004824015AP	GREASE MOBILITH SHC 220	0.544 LB
032018008AK	HHCS 1/4-20X1 PLATED	4.000 EA
032018012DK	HHCS 1/2-13X1-1/2 PLTD.	4.000 EA
032018024CK	HHCS 3/8-16X3 PLTD.	3.000 EA
034180012DA	KEY 1X4X1/4X1-1/2 L	1.000 EA
034530032BB	P/NIP 1/4X4" SCHED 40	1.000 EA
034530052AB	P/NIP 1/8X6-1/2 GALV.	1.000 EA
034600001AA	BUSH 1/4TO1/8 BLACK	1.000 EA
034630002AB	CPLG 1/4" PLATED	1.000 EA
034690001AB	SQHDPLG, COND	1.000 EA
035000001G	GREASE RELIEF FITTING, ALEMITE 317400	1.000 EA
085922083BH	BRKT 360 085922072WCC KB	1.000 EA
085922083BH	BRKT 360 085922072WCC KB	1.000 EA
047174001Z	EXT SNAP RING	1.000 EA

Parts List (continued)		
Part Number	Description	Quantity
078559034A	+F/C A 078559001A - 360	1.000 EA
412118006A	DRAIN	1.000 EA
415028008E	INPRO SEAL - 360	1.000 EA
415096002A	CPLG 1/8 HEX TYPE	1.000 EA
423709011C	WASHER	3.000 EA
415028008E	INPRO SEAL - 360	1.000 EA
415096002A	CPLG 1/8 HEX TYPE	1.000 EA
423709011C	WASHER	3.000 EA
HW4600G56	DOME SLINGER, 7.875 OD X 2.370/2.300 ID	1.000 EA
415072001B	CLAMP	1.000 EA
702676001C	FAN 360 - 56 PCS	1.000 EA
032018012DK	HHCS 1/2-13X1-1/2 PLTD.	4.000 EA
032018024CK	HHCS 3/8-16X3 PLTD.	3.000 EA
034530020BB	P/NIP 1/4X2-1/2 PLATED	1.000 EA
034530032AB	P/NIP 1/8X4 PLATED	1.000 EA
034600001AA	BUSH 1/4TO1/8 BLACK	1.000 EA
034630002AB	CPLG 1/4" PLATED	1.000 EA
035000001G	GREASE RELIEF FITTING, ALEMITE 317400	1.000 EA
032018010CK	HHCS 3/8-16X1-1/4 PLTD.	4.000 EA
033512008LB	HHTTS 1/4-20X1 PLATED	4.000 EA
034000014AB	WSH ID.406 OD.812 TH.065	4.000 EA
035000001A	ALFTG 1/8" 1610-BL	1.000 EA
035000001A	ALFTG 1/8" 1610-BL	1.000 EA
067053000B	GASK 320-400	1.000 EA

Product Information Packet: ECP64316TR-4 - 75HP,1780RPM,3PH,60HZ,365T,TEFC,FOOT,

076708000BB	C/B - 360	1.000 EA
076709000A	C/B - 360	1.000 EA
406099000A	PLUG - FAN COVER 320-440	1.000 EA
415000103H	TERMINAL LUG	1.000 EA
415039016A	TERBD, 360-400	1.000 EA
418150003A	GREASE FITTING CAP	1.000 EA
418150003A	GREASE FITTING CAP	1.000 EA
033775004EA	DRSCR #6-1/4 304 S.S.	4.000 EA
034180034HA	KEY 5/8X5/8X4-1/4 L	1.000 EA
MG1025N19	WILKO 778.50 BLUE GREEN - 55 GAL DRUMS	0.250 GA
004824003CBY	WILKO PAINT 060.02 - ACTIVATOR	0.063 GA
482403003BEF	RUST VETO 342	0.013 GA
MG1500G03-5	LACQUER PRIMER, GRAY	0.063 GA
421948051	LABEL, MYLAR	1.000 EA
14PA1000	PACKAGING 314 GROUP COMBINED PRINT	1.000 EA
604797015R	SHAFT BLOCK	1.000 EA
032018024EK	HHCS,ODE BRKT	1.000 EA
034001018AB	FLTWSHR,C/B BRACE	1.000 EA
034001020AB	3/4 STD W FL WASHER	1.000 EA
415070001A	RUBBER MOUNT 3X3X1 THICK	1.000 EA
LB1449	DIV-2/NEC WARNING LABEL	1.000 EA
032018005DL	1/2-13 X 5/8 SILICON BRONZE HHCS	1.000 EA




REL. S. O.	FRAME	HP	TYPE	PHASE/HERTZ	RPM	VOLTS
	365T	75	P	3/60	1780	460
AMPS	DUTY	AMB °C/INSUL.	S. F.	NEMA DESIGN	CODE LETTER	ENCL.
85.9	CONT	40/F	1.15	B	G	TEFC
E/S	ROTOR	TEST S. O.	TEST DATE	STATOR RES. @25 °C OHMS (BETWEEN LINES)		
892096	418141043EE	---	---	.0843		

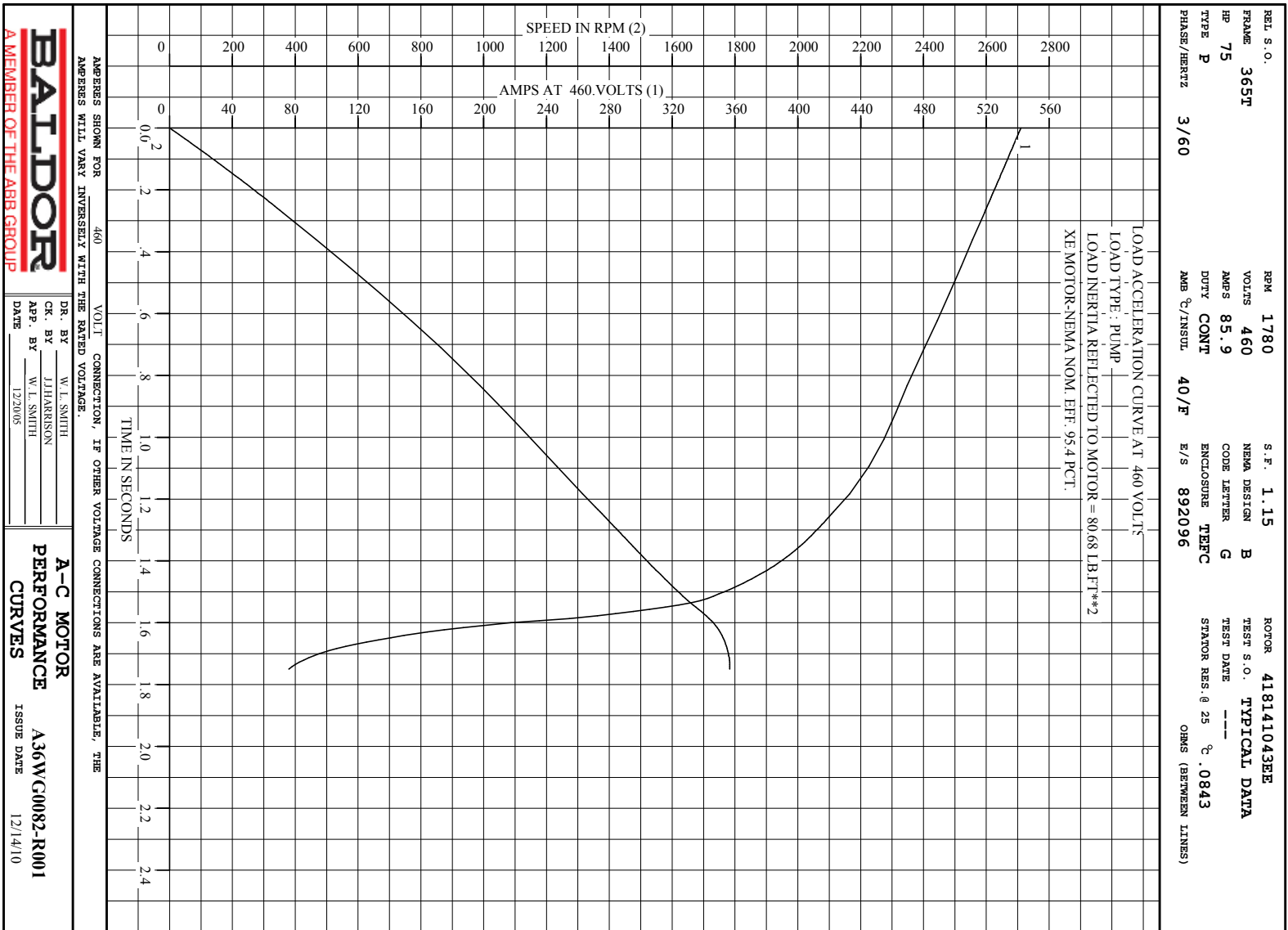
PERFORMANCE

LOAD	HP	AMPERES	RPM	POWER FACTOR %	EFFICIENCY %
NO LOAD	0	26.1	1800	3.86	0
1/4	18.8	33.4	1796	56.1	93.8
2/4	37.5	47.7	1791	77.0	95.7
3/4	56.2	65.8	1786	83.5	95.8
4/4	75.0	85.9	1781	85.6	95.4
5/4	93.8	107	1776	86.7	94.8
SPEED TORQUE					
		RPM	TORQUE % FULL LOAD	TORQUE LB.-FT.	AMPERES
LOCKED ROTOR		0	196	433	542
PULL UP		1130	166	368	458
BREAKDOWN		1699	252	557	293
FULL LOAD		1781	100	221	85.9

AMPERES SHOWN FOR 460. VOLT CONNECTION. IF OTHER VOLTAGE CONNECTIONS ARE AVAILABLE, THE AMPERES WILL VARY INVERSELY WITH THE RATED VOLTAGE

REMARKS: TYPICAL DATA
 XE MOTOR-NEMA NOM. EFF. 95.4 PCT.

 <p>A MEMBER OF THE ABB GROUP</p>	DR. BY <u>W. L. SMITH</u> CK. BY <u>J. J. HARRISON</u> APP. BY <u>W. L. SMITH</u> DATE <u>12/20/05</u>	A-C MOTOR PERFORMANCE DATA A36WG0082-R001 ISSUE DATE 12/14/10
--	---	--

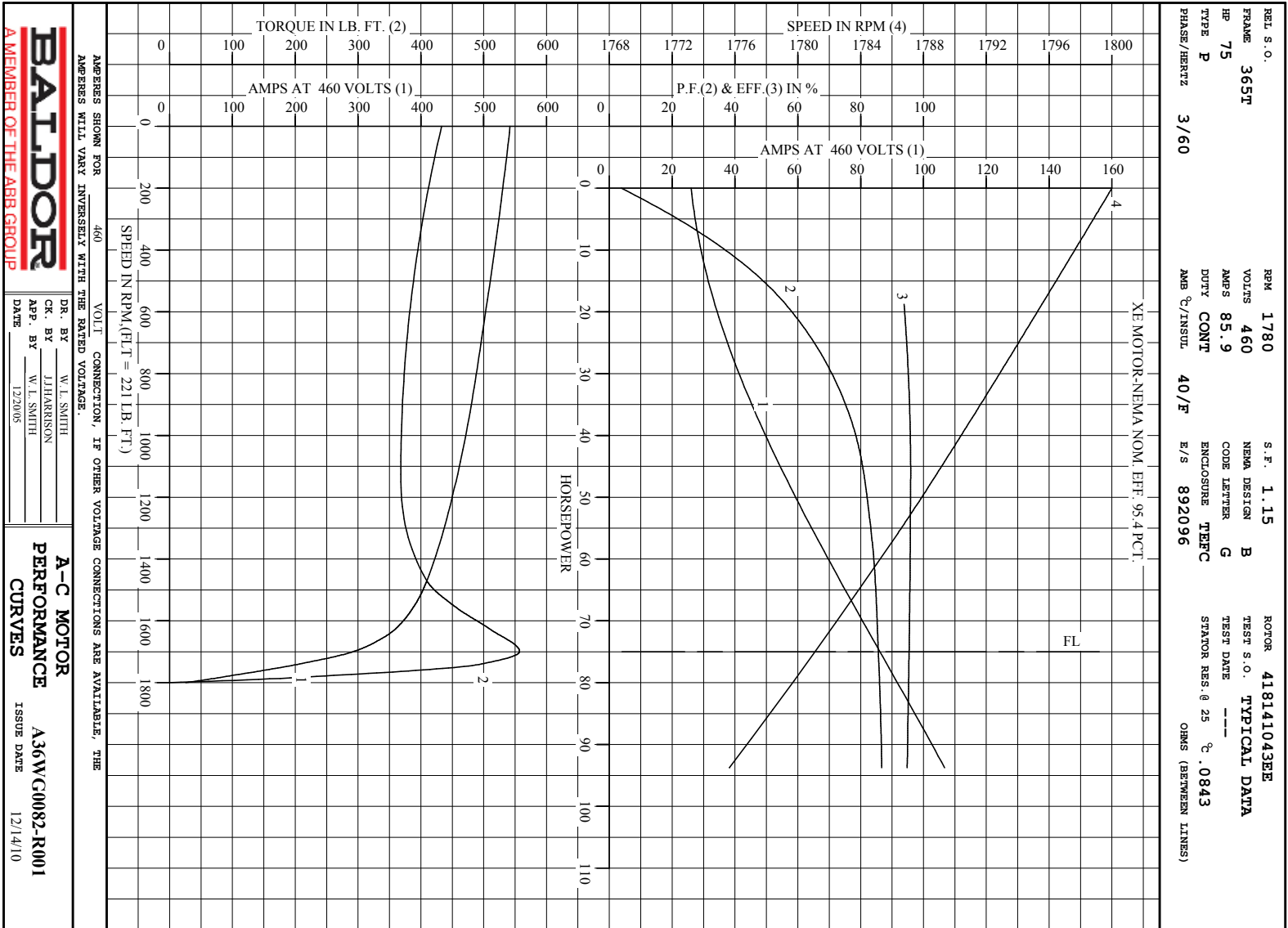


BALDOR
 A MEMBER OF THE ABB GROUP

DR. BY W. L. SMITH
 CK. BY J. HARRISON
 App. BY W. L. SMITH
 DATE 12/30/05

A-C MOTOR
PERFORMANCE
CURVES
 A36WC0082-R001
 ISSUE DATE 12/14/10

Printed on 11/11/14 8:03 @ rsgsun



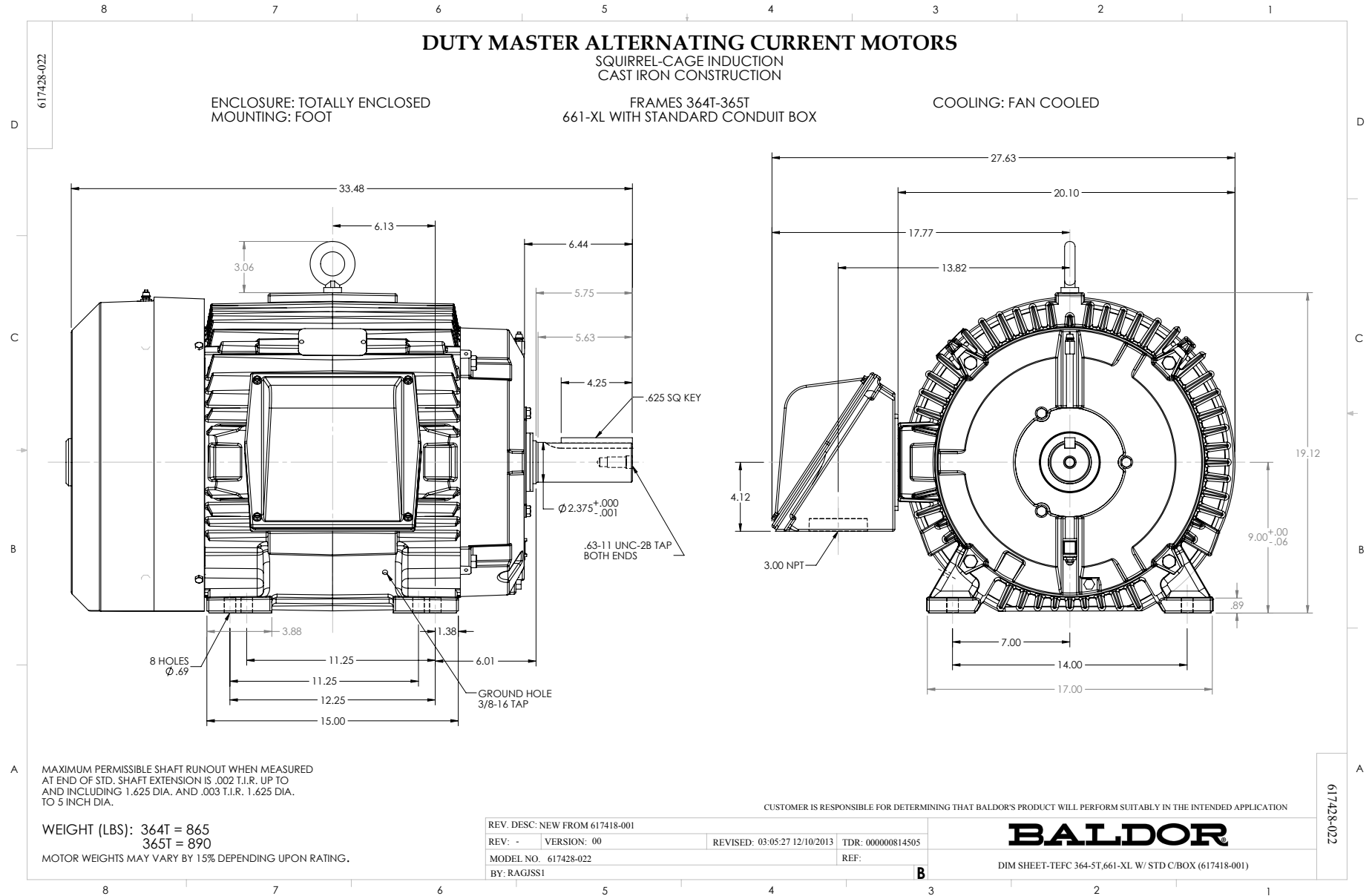
APPROX SHOWN FOR 460 VOLT CONNECTION, IF OTHER VOLTAGE CONNECTIONS ARE AVAILABLE, THE AMPERES WILL VARY INVERSELY WITH THE RATED VOLTAGE.

BALDOR	A MEMBER OF THE ABB GROUP
DR. BY W. L. SMITH	DR. BY W. L. SMITH
CHK. BY J. HARRISON	APP. BY W. L. SMITH
DATE 12/30/05	DATE 12/30/05

A-C MOTOR PERFORMANCE CURVES

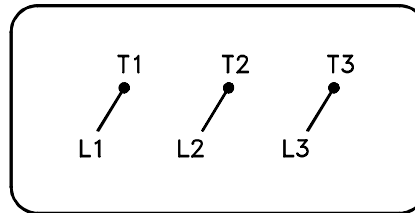
A36WC0082-R001
ISSUE DATE 12/14/10

Printed on 11/11/14 8:03 @ zagsun



416820-036

A-C MOTOR
 CONNECTION DIAGRAM
 STANDARD 3 LEAD CONNECTED



(N.P. 1575-BA)

416820-036

REV. DESC: LOADED TO BUS, C/R 335225		
REV. LTR: -	VERSION: 00	TDR: 000000538207
FILE: \MGA\00000\682	REVISED: 11:54:06 04/30/2010	
MTL: -	BY: RAGRA	

BALDOR

CONN DIAG - STANDARD 3 LEAD

SH 1 of 1

Marketing maintained PDF of MN408:

<http://www.baldor.com/support/Literature/Load.ashx/MN408?ManNumber=MN408>

Marketing maintained PDF of MN416:

<http://www.baldor.com/support/Literature/Load.ashx/MN416?ManNumber=MN416>