

# **BALDOR® • RELIANCE**

## **Product Information Packet**

# **VEL11309**

**1HP,3480RPM,1PH,60HZ,56C,3524LC,OPEN,F1**

Part Detail							
Revision:	C	Status:	PRD/A	Change #:		Proprietary:	No
Type:	AC	Prod. Type:	3524LC	Elec. Spec:	35WGN672	CD Diagram:	CD0055
Enclosure:	OPEN	Mfg Plant:		Mech. Spec:	35E2891	Layout:	35LYE2891
Frame:	56C	Mounting:	F1	Poles:	02	Created Date:	09-29-2014
Base:	N	Rotation:	R	Insulation:	B	Eff. Date:	08-10-2016
Leads:	4#16 A PH,2#18 B PH					Replaced By:	
Literature:		Elec. Diagram:					

Nameplate NP3155L										
CAT.NO.	VEL11309									
SPEC.	35E2891N672G1									
HP	1									
VOLTS	115/230									
AMP	7.8/3.9									
RPM	3480									
FRAME	56C				HZ	60			PH	1
SER.F.	1.25		CODE	H	DES	N		CL	B	
F.L. AVG. EFF.	82		PF	99						
RATING	40C AMB-CONT									
CC								USABLE AT 208V	5.5	
DE	6205				ODE	6203				
ENCL	OPEN		SN							
	SFA 10/5									

Parts List		
Part Number	Description	Quantity
SA287990	SA 35E2891N672G1	1.000 EA
RA274193	RA 35E2891N672G1	1.000 EA
OC3060C09	CYL OIL CAP 60MFD/240V	1.000 EA
EC1645B06	ELEC CAP 165V 2.0 X 4.3	1.000 EA
WD3006A01	RSS-2-103JT 2W 10K RES. METAL OXIDE 5%	1.000 EA
NS2512A01	INSULATOR, CONDUIT BOX X	1.000 EA
35CB3007	35 CB CASTING W/.88 DIA. LEAD HOLE	1.000 EA
51XB1016A07	10-16 X 7/16 HXWSSLD SERTYB	2.000 EA
11XW1032G06	10-32 X .38, TAPTITE II, HEX WSHR SLTD U	1.000 EA
HW3001B01	BRASS CUP WASHER, FOR #8 SCREW	1.000 EA
51XW0832A07	8-32 X .44, TAPTITE II, HEX WSHR SLTD SE	2.000 EA
35EP3201A16	FR ENDPLATE, MACH	1.000 EA
HW5100A03SP	WAVY WASHER (W1543-017)	1.000 EA
NS2501A01	INSULATOR, CAPACITOR	1.000 EA
35CB3801	CAPACITOR COVER, CAST	1.000 EA
HA7010	CAPACITOR RETENTION CLAMP	1.000 EA
51XB1016A08	10-16X 1/2HXWSSLD SERTYB	2.000 EA
35EP3400A13	STD FACE MTD END PLATE OPEN NEMA 56C 05	1.000 EA
35AD2000	AIR BAFFLE	1.000 EA
60XW0632A06	6-32 X 3/8 TORX HEAD SCREW TAPTITE II	4.000 EA
35FH4006A01SP	DRIP COVER,STAMPED,W/ PRIMER	1.000 EA
51XW1032A06	10-32 X .38, TAPTITE II, HEX WSHR SLTD S	3.000 EA
51XN1032A20	10-32 X 1 1/4 HX WS SL SR	2.000 EA
35CB4521	35 LIPPED CB LID (GALV & PHOSPH)	1.000 EA

<b>Parts List (continued)</b>		
<b>Part Number</b>	<b>Description</b>	<b>Quantity</b>
51XW0832A07	8-32 X .44, TAPTITE II, HEX WSHR SLTD SE	4.000 EA
HW2501D13	KEY, 3/16 SQ X 1.375	1.000 EA
HA7000A04	KEY RETAINER 0.625 DIA SHAFTS	1.000 EA
85XU0407S04	4X1/4 U DRIVE PIN STAINLESS	2.000 EA
MJ1000A02	GREASE, POLYREX EM EXXON (USe 4824-15A)	0.050 LB
MG1000Y03	MUNSELL 2.53Y 6.70/ 4.60, GLOSS 20,	0.017 GA
WD1000A15	3-520132-2 AMP FLAG (4M/RL NON-CANC/NON-	3.000 EA
SP5181A01	MODEL 35 LC TORQ STAT SWITCH LEAD ASSY	1.000 EA
34GS5003	FOAM SLEEVE, ID = 2 1/16" X 3 3/8"	1.000 EA
HA3100A15	THRUBOLT 10-32 X 8.375	4.000 EA
MN416A01	TAG-INSTAL-MAINT no wire (1200/bx) 11/14	1.000 EA
NP3155L	ALUM SUPER-E UL CSA CC "SEMS"	1.000 EA
35PA1000	PKG GRP, PRINT PK1008A06	1.000 EA
PK3082	STYROFOAM CRADLE	1.000 EA
LB1119N	WARNING LABEL	1.000 EA
LC0001	CONN LABEL TYPE L, 6 LEAD, DUAL VOLTS, R	1.000 EA

**AC Induction Motor Performance Data**

Record # 47428 - Typical performance - not guaranteed values

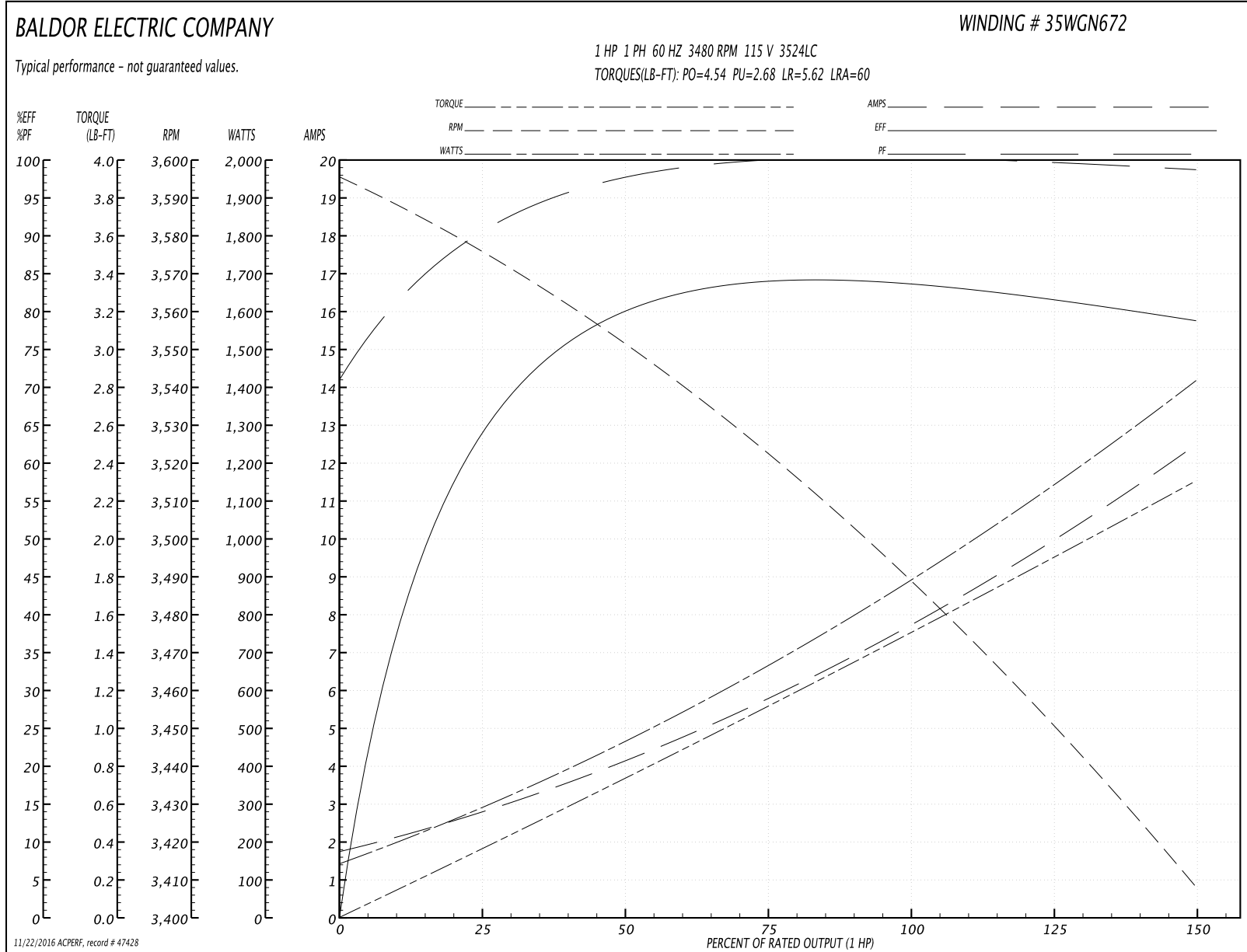
<b>Winding:</b> 35WGN672-R003	<b>Type:</b> 3524LC	<b>Enclosure:</b> OPEN
-------------------------------	---------------------	------------------------

Nameplate Data				115 V, 60 Hz: Low Voltage Connection	
Rated Output (HP)	1			Full Load Torque	1.51 LB-FT
Volts	115/230			Start Configuration	direct on line
Full Load Amps	7.8/3.9			Breakdown Torque	4.54 LB-FT
R.P.M.	3480			Pull-up Torque	2.68 LB-FT
Hz	60	Phase	1	Locked-rotor Torque	5.62 LB-FT
NEMA Design Code	N	KVA Code	H	Starting Current	60 A
Service Factor (S.F.)	1.25			No-load Current	1.8 A
NEMA Nom. Eff.	82	Power Factor	99	Line-line Res. @ 25°C	0.63772 Ω A Ph 0.97353 Ω B Ph
Rating - Duty	40C AMB-CONT			Temp. Rise @ Rated Load	11°C
S.F. Amps	10/5			Temp. Rise @ S.F. Load	15°C

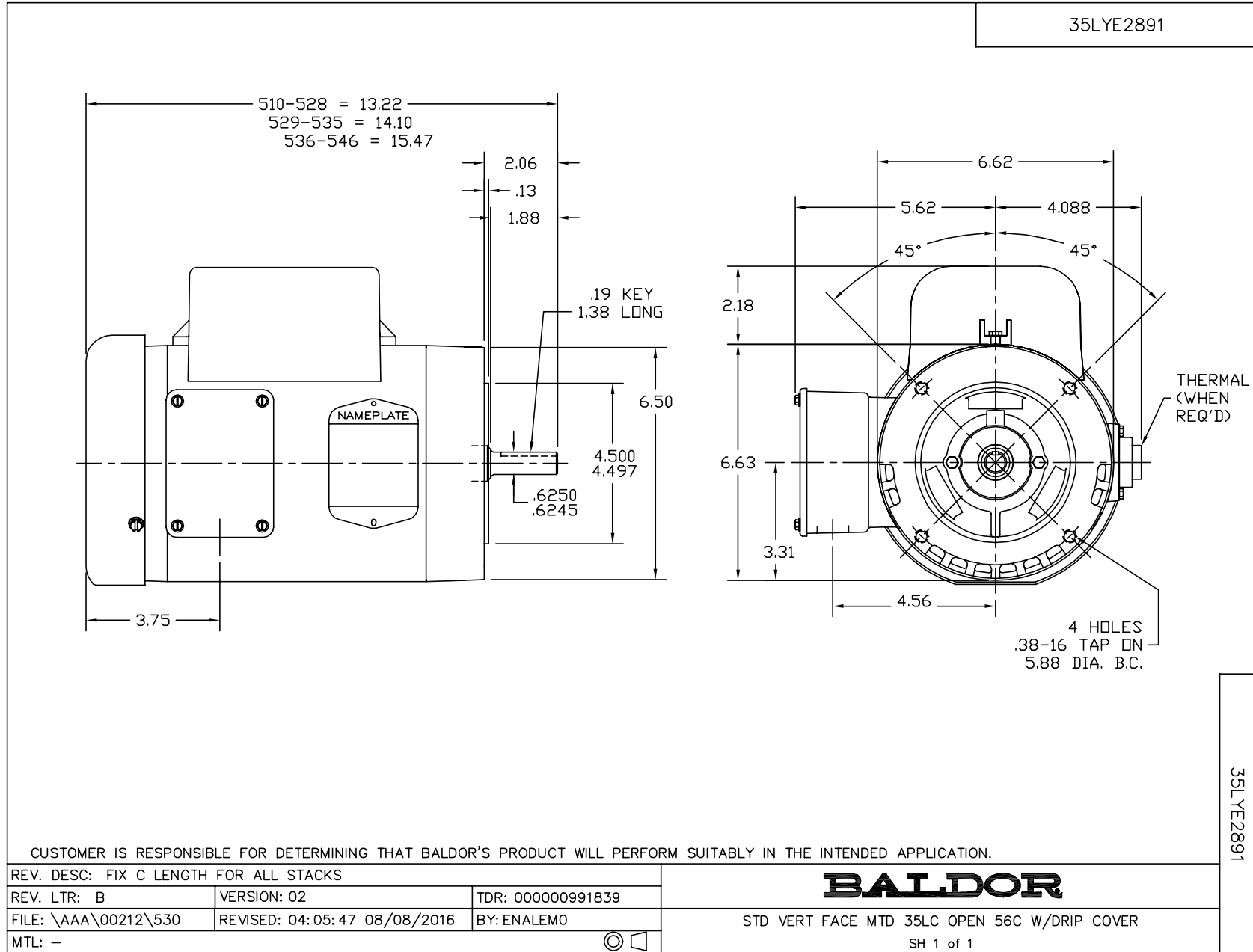
Load Characteristics 115 V, 60 Hz, 1 HP

% of Rated Load	25	50	75	100	125	150	S.F.
Power Factor	90	98	99	100	99	99	99
Efficiency	67.6	79.9	83.3	83.3	81.7	78.8	81.7
Speed	3573.1	3548.4	3521.9	3491.7	3452	3405.5	3452
Line amperes	2.72	4.17	5.87	7.77	9.99	12.5	9.99

Performance Graph at 115V, 60Hz, 1.0HP Typical performance - Not guaranteed values



11/22/2016 ACPERF, record # 47428



CD0055



REV. DESC: REVISE TO SHOW OPTIONAL COLORS			
REV. LTR: D	BY: JLP	REVISED: 04/08/99 1:17	TDR: 0178636
990000		FILE: AAA00007414	MDL: -
		MTL: -	

**BALDOR ELECTRIC Co.**

TYPE LC, DV, REV, 6 LEADS

CD0055