



AquaCase

Wi-Fi and Bluetooth® enabled,
all-in-one pressure boosting system

Take water pressure to the next level

Xylem's AquaCase by Goulds Water Technology is an advanced all-in-one pressure boosting system designed to ensure constant water pressure for residential and light commercial/irrigation applications. AquaCase has built-in Bluetooth® and Wi-Fi connectivity, enabling remote monitoring and control using a free smartphone app for seamless, convenient operation. Its compact design integrates a variable speed pump, motor, pressure sensor, tank, and smart controller into a single, easy-to-install unit. This intelligent and energy-efficient system ensures faster installation, reliable pressure performance, and long-term savings.

Powerful. Compact. Reliable. Just open the box and boost with confidence!

Features

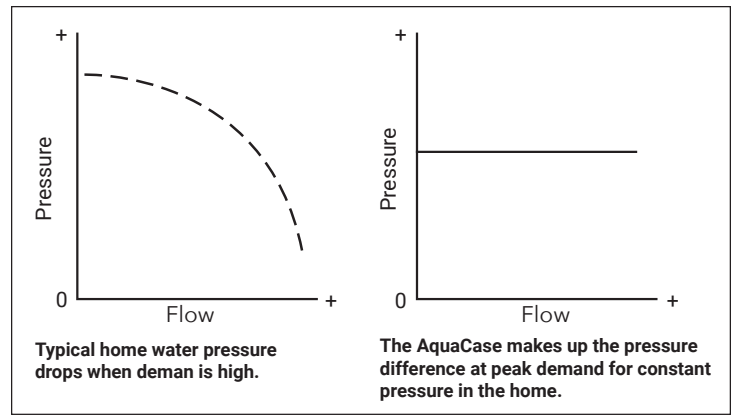
- **Energy efficient:** Variable frequency drive (VFD) technology optimizes pump speed for consistent pressure and lower energy costs.
- **Dual application design:** One solution for both residential and light commercial markets, reducing the need for separate systems.
- **Dual voltage compatibility:** One product supports both 115V and 230V applications eliminating the need for multiple models.
- **Quiet operation:** Superior hydraulics reduce noise output for a quieter operating environment.
- **Quick and easy installation:** MNPT inlet and discharge are strategically designed to simplify installation and reduce install time.
- **Wireless access:** Bluetooth® and Wi-Fi connectivity enable remote pump management via a free smartphone app.
- **Dual seal design:** Integrated primary and secondary mechanical seals minimize leaks and extend product life.
- **Field upgradable software:** Unlock new features and performance improvements without ever removing the unit from service.
- **Durable enclosure:** UL Type 3R (NEMA 3R) housing protects the all-in-one system in both indoor and outdoor environments.
- **Intuitive user interface:** Simple push-button HMI display with real-time system feedback and alerts:
 - dry run (no water)
 - motor overcurrent
 - open lead
 - low system pressure
 - overheating
 - short circuit
 - over/under voltage

Model	Input voltage	Pump designation	Max GPM	Max setpoint	Breaker size ¹
AC10	115V	10 GPM AT 56 PSI (37.8 L/MIN AT 3.86 BAR)	30 GPM (113.5 L/MIN)	80 PSI (5.52 BAR)	15A
	230V	20 GPM AT 50 PSI (75.7 L/min AT 3.45 BAR)	38 GPM (143.8 L/min)		

¹ Always follow national and local wiring codes.

The AquaCase advantage

The AquaCase pressure boosting system offers an economical solution for municipal water users experiencing low pressure. It can also be used to repressurize water from a storage tank. As your household water needs change, AquaCase adjusts the motor speed to meet the demand.



Applications

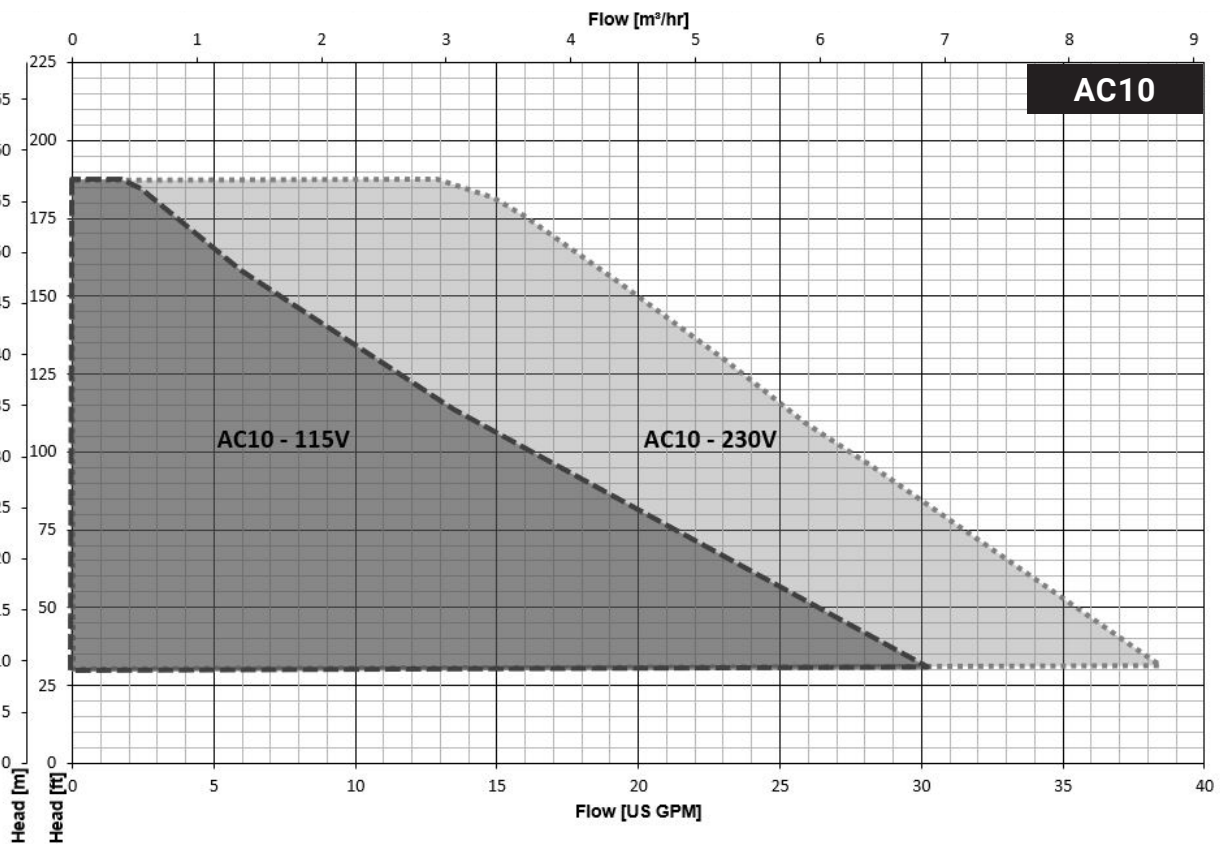
- Residential water pressure boosting
- Basement or utility room installs
- Irrigation and sprinkler systems
- Cistern or holding tank systems
- Multi-unit dwellings
- Light commercial buildings

Specifications

Input power	Single phase 115V/230V
Programming	Pre-programmed
Input controls	HMI screen with push button controls
Status indicator lights	Red and blue LED's
Temperature rating	32° - 122°F (0-50°C)
Enclosure	UL Type 3R (NEMA 3R)
Power lead	115V plug
Cord length	6 feet (1.8 meters)
Weight	48 lb (21.7 kg)
Standard warranty	24 months / 30 months (install/date code)
GPDA warranty	36 months / 42 months (install/date code)

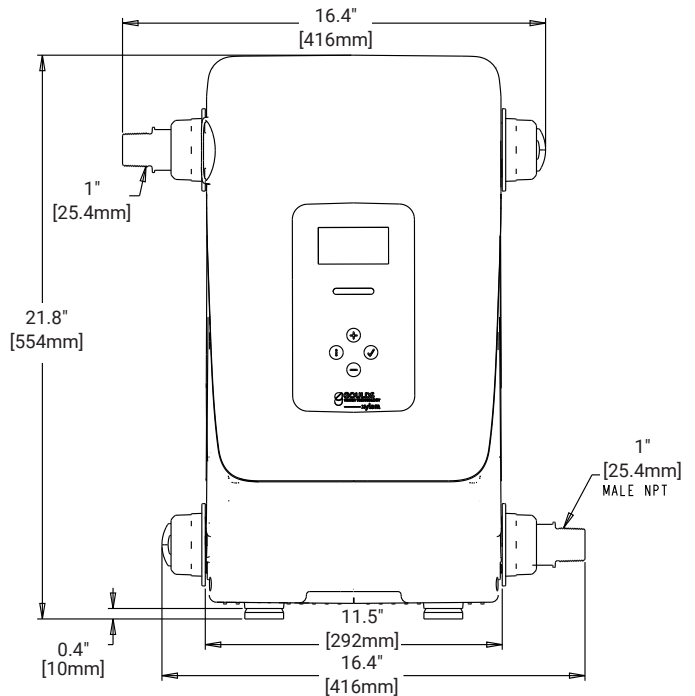
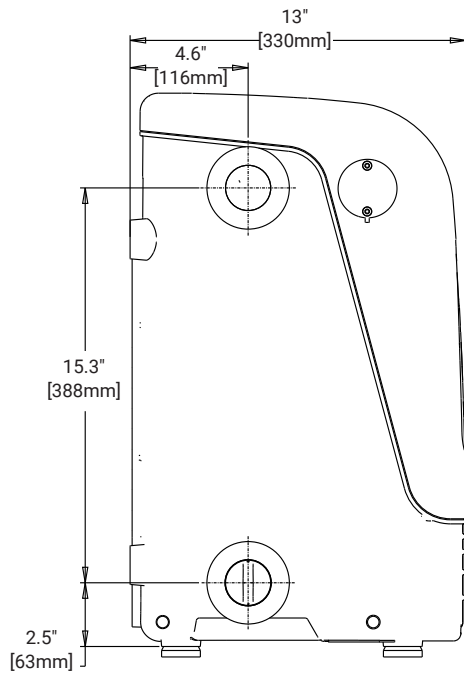
Performance curves

AC10



Dimensional drawings

All dimensions are in inches [millimeters]



Dimensions and weights

All dimensions are in inches [millimeters]. Weights are in pounds [kilograms].

Model	Height	Width	Depth	Weight
AC10	21.4" (544 mm)	11.3" (287mm)	13" (330 mm)	48 lb (21.7 kg)

Dimensions are subject to change. Not to be used for construction purposes.

Xylem Product Cybersecurity

Xylem values your system security and the availability of your critical services. For more information on Xylem cybersecurity practices or to contact the cybersecurity team please visit xylem.com/security.

Learn more about
AquaCase pumps



Xylem Inc.

2881 East Bayard Street Ext.,
Suite A
Seneca Falls, NY 13148

Phone: (866) 325-4210

Fax: (888) 322-5877

www.xylem.com/goulds

This information is subject to change without notice. All information presented herein is believed reliable and in accordance with accepted engineering practices. Xylem makes no warranties as to the completeness of this information. Users are responsible for evaluating individual product suitability for specific applications. Xylem assumes no liability whatsoever for any special, indirect or consequential damages arising from the sale, resale or misuse of its products.

© 2025 Xylem is a registered trademark of Xylem Inc. or one of its subsidiaries. Goulds Water Technology is a registered trademark of ITT Manufacturing Enterprises LLC and is used under license. The Bluetooth® word mark and logos are registered trademarks owned by Bluetooth SIG, Inc. and any use of such marks by Xylem Inc. or one of its subsidiaries is under license. All other trademarks or registered trademarks are the property of their respective owners.

GWT-ACTB-4000026 R4 10/2025

xylem
Let's Solve Water

Order Online: www.PumpCatalog.com