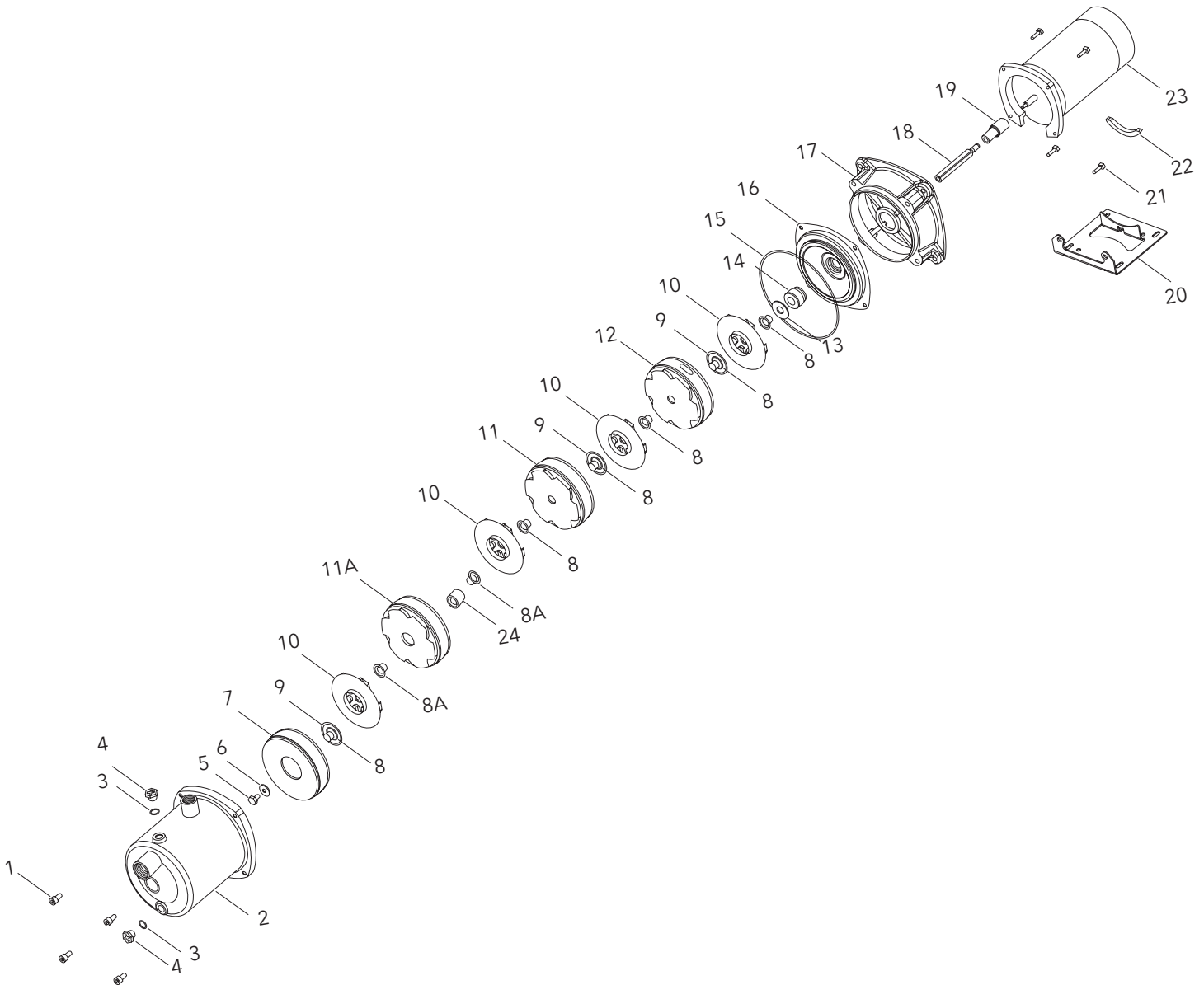


HMS

REPAIR PARTS



Item No.	Part Description	Material	Repair Part No.	Quantity			
1	Screw, casing	400 SS	13K271	4			
2	Pump, casing with plug and Viton o-rings	316L SS	See Chart Below	1			
3	O-ring, fill and drain plug	Viton	5L99	2 each			
4	Fill and drain plug	316 SS	6L3	2 each			
5	Impeller bolt	316 SS	13L119	1			
6	Impeller lock washer	316 SS	13L120	1			
7	Diffuser cover, first stage	316L SS	7L363	2			
8	Impeller spacer	316L SS	See Chart	See Chart			
8A	Impeller spacer (Intermediate)	316L SS	See Chart	See Chart			
9	O-ring, impeller	EPR	5L83	See Chart			
		Optional Viton	5L90				
10	Impeller	316L SS	See Chart	See Chart			
11	Diffuser, intermediate	316L SS	7L357	See Chart			
11A	Diffuser with bushing	316L SS	See Chart	See Chart			
12	Diffuser, last stage	316L SS	3L36	1			
13	Washer, mechanical seal	316 SS	13L118	1			
14	Mechanical seal (less item 13)	Varies	See mechanical seal application chart	1			
15	O-ring, casing	EPR	5K222	1			
		Optional Viton	5K216				
			Before SN: F0264029•	After SN: F0264029•			
16	Seal housing	316L SS	1L444	1L552	1		
17	Motor adapter	Aluminum	1K350	1K453	1		
18	Shaft, pump	316L SS	See Chart	1			
19	Shaft coupling	316 SS	4K792	1			
20	Foot, pump	Steel	4K450	1			
21	Screw, motor to motor adapter	Steel	13K194	4			
22	Spacer	Rubber	9K188**	1			
23*	Motor, 1 PH ODP	303 SS	SFE04853S	SFE05853S	SFE06853S	SFE07853S	1
	Motor, 3 PH ODP		SFE04873S	SFE05873S	SFE06873S	SFE07878S	
	Motor, 1 PH TEFC		SFE04821S	SFE05821S	SFE06821S	SFE07821S	
	Motor, 3 PH, TEFC		SFE04876S	SFE05876S	SFE06876S	SFE07876S	
24	Shaft Sleeve	Tungsten Carbide	See Chart	See Chart			

* 575 V motors available. Consult factory. ** For all single phase ODP units use 9K286.

Rotary	Stationary	Elastomer	Metal Parts	Part No.	
				Before	After
				SN: F0264029 •	
Carbon	Silicon Carbide	EPR	316SS	-	10L35
		Viton		10L32**	10L36
	Silicon Carbide			-	10L34

• For pumps used in conjunction with the AquaBoost pumping system, use SN F0265181.

** Replacement for 10L29, 10L30 and 10L31

Item #	Part Name	2 Stage	3 Stage	4 Stage	5 Stage
2	Case Assembly	1L445	1L446	1L447	1L448
18	Shaft	4K793	4K794	4K795	4K796

Part Name	Repair Part Number	Quantity				
		2 Stage	3 Stage	4 Stage	5 Stage	
Impeller	1HMS	2L160	2	3	4	5
	2HMS	2L170				
O-ring impeller	EPR	5L83	2	3	4	5
	Viton	5L90				
Diffuser, int. with viton o-ring	7L357	0	0	1	2	
Diffuser with bushing	76360	0	1	1	1	
Spacer, impeller	4L177	4	4	6	8	
Spacer, impeller Intermediate	4L176	0	2	2	2	
Shaft sleeve	4L180	0	1	1	1	

Xylem Inc.

2881 East Bayard Street Ext., Suite A, Seneca Falls, NY 13148

Phone: (800) 453-6777 Fax: (888) 322-5877

www.gouldswatertechnology.com



Goulds is a registered trademark of Goulds Pumps, Inc. and is used under license.

G&L is a trademark of Xylem Inc. or one of its subsidiaries.

© 2016 Xylem Inc. RHMS R2 February 2016

Order Online: www.PumpCatalog.com