



# MARCH PUMPS

1819 PICKWICK AVE., GLENVIEW, IL 60026-1306, U.S.A  
 PHONE: (847) 729-5300 - FAX: (847) 729-7062  
 WWW.MARCHPUMP.COM

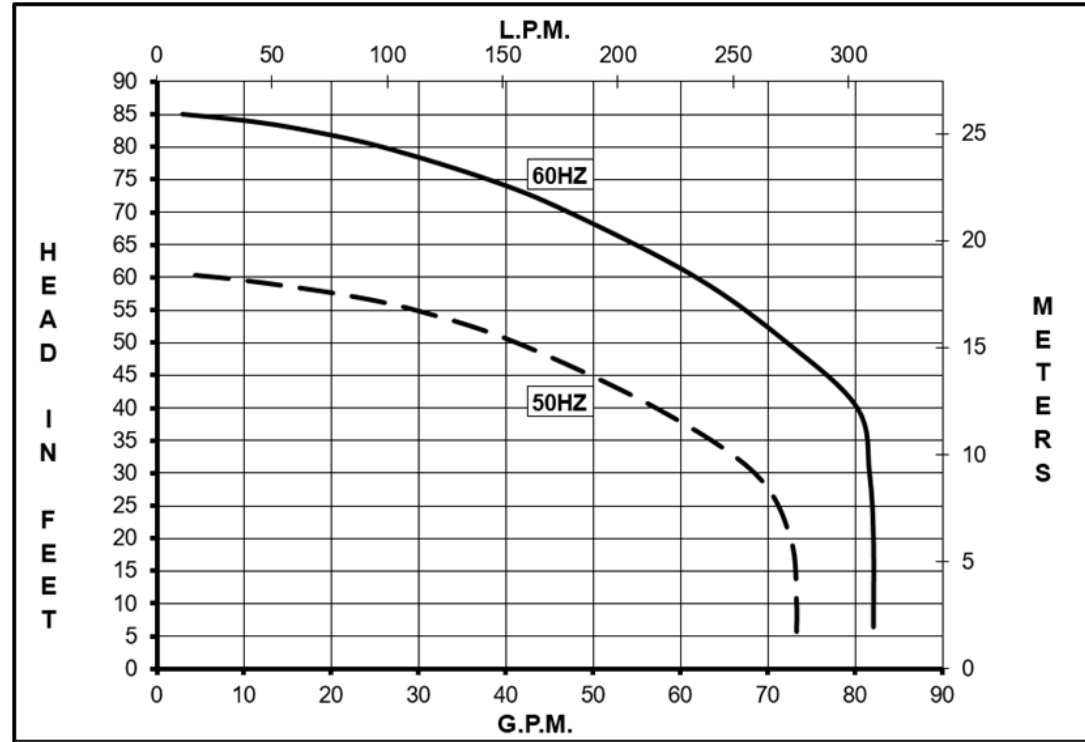
## TE-7.5P-MD, TE-7.5K-MD

**DESCRIPTION:** [Series 7.5 are centrifugal magnetic drive pumps.](#) See the parts list for a breakdown of parts. Pumps are not self-priming, lack a suction lift, and thus require a **flooded suction**. Pumps **cannot be run dry** because the impeller requires the liquid being pumped for lubrication. The direction of motor rotation should be clockwise when facing the inlet of the pump. For liquids with a specific gravity greater than water, have a higher viscosity, or for elevated temperatures, a trimmed impeller may be necessary. For application assistance, contact March Pump.

**MODEL ABBREVIATIONS :** P Polypropylene, K: Kynar

**ELECTRICAL:** TE-7.5MD pumps are 1Ph dual voltage 115/230V 60Hz and 100/200V 50Hz, or 3Ph dual voltage 230/460V 60Hz and 190/380V 50Hz. Motors are totally enclosed fan cooled and are U.L. listed as well as rated for continuous operation. All motors have a conduit box for electrical connections.

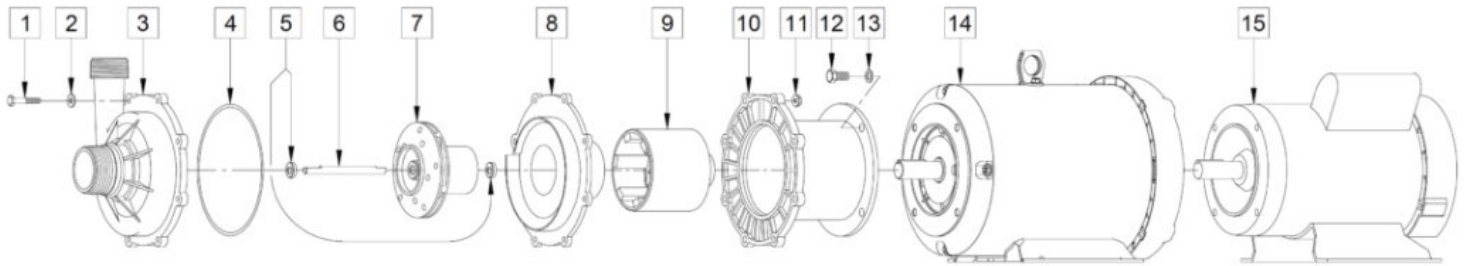
**ASSEMBLY & DISASSEMBLY:** The magnetic coupling in the pump is strong enough to warrant caution. When servicing the pump, the attraction of the impeller magnet and drive magnet may pull the impeller from your grasp. When assembling, hold onto the outer diameter of the impeller vanes with both hands and gently engage the impeller into the magnet field. Hold the impeller firmly and resist the magnetic attraction as you slowly put the impeller back in. The magnetic forces are strongest between 1/3 to 2/3 of engagement and will diminish when the magnets become aligned. Do not allow the impeller to snap into the rear housing, doing so may result in damage. Exercise caution in placing any of the magnets near steel, tools, or other sensitive instruments as doing so may result in damage or personal injury. When attaching drive magnet to motor shaft, position the face of the drive magnet 5/32 inch above the face of the motor bracket.



Specifications		TE-7.5P-MD	TE-7.5K-MD
Product	1Ph 2HP	0156-0059-0400	0156-0001-0200
	3Ph 2HP	0156-0115-0100	0156-0111-0100
Inlet-Outlet		2" MPT-1.5" FPT	2" MPT-1.5" FPT
Max Internal Pressure		60PSI (413 kPa)	60PSI (413 kPa)
Max Liquid Temperature		190F (87C)	190F (87C)

Model	60Hz											50Hz											Packed Weight Pounds
	Max Flow		Max Head			Electrical						Max Flow		Max Head			Electrical						
	GPM	LPM	FT	PSI	M	Ph	V	A	HP	kW	RPM	GPM	LPM	Feet	PSI	M	Ph	V	A	HP	kW	RPM	
TE-7.5P-MD	82	310	85	36.7	26	1	115/230	22/11	2	1.1	3450	71	268	59	25.5	18	1	100/200	20/10	1.5	1.1	2850	64.8
TE-7.5P-MD	82	310	85	36.7	26	3	230/460	4.94/2.47	2	1.5	3450	71	268	59	25.5	18	3	190/380	5.94/2.97	2	1.5	2850	61
TE-7.5K-MD	82	310	85	36.7	26	1	115/230	22/11	2	1.5	3450	71	268	59	25.5	18	1	100/200	20/10	1.5	1.1	2850	64.8
TE-7.5K-MD	82	310	85	36.7	26	3	230/460	4.94/2.47	5	1.5	3450	71	268	59	25.5	18	3	190/380	5.94/2.97	2	1.5	2850	61

All specifications & data are based on pumping water & are intended as a guideline only. Specifications may vary with different motors.



TE-7.5P-MD				TE-7.5K-MD			
Item	Part Number	QTY REQ	Description	Item	Part Number	QTY REQ	Description
1	0153-0011-1000	8	1/4"-20 x 1-1/2" Long Screw (Stainless)	1	0153-0011-1000	8	1/4"-20 x 1-1/2" Long Screw (Stainless)
2	0157-0023-1000	8	1/4" ID x 5/8" OD Washer (Stainless)	2	0157-0023-1000	8	1/4" ID x 5/8" OD Washer (Stainless)
3	0156-0060-1000	1	Front Housing with 2" FPT Inlet & 1-1/2" MPT Outlet (Polypropylene)	3	0156-0001-1000		Front Housing with 2" FPT Inlet & 1-1/2" MPT Outlet (Natural Kynar)
4	0156-0010-1000	1	0.157" CS x 6.457" ID "O" Ring (Viton)	4	0156-0010-1000	1	0.157" CS x 6.457" ID "O" Ring (Viton)
5	0156-0016-1000	2	Front and Rear Thrust Washer (Ceramic)	5	0156-0016-1000	2	Front and Rear Thrust Washer (Ceramic)
6	0156-0007-1000	1	Shaft (Ceramic)	6	0156-0007-1000	1	Shaft (Ceramic)
7	0156-0064-0200	1	Impeller with Carbon Bushings (Polypropylene)	7	0156-0004-0200	1	Impeller with Carbon Bushings (Natural Kynar)
8	0156-0061-1000	1	Rear Housing (Polypropylene)	8	0156-0002-1000	1	Rear Housing (Natural Kynar)
9	0156-0009-0100	1	Drive Magnet	9	0156-0009-0100	1	Drive Magnet
10	0156-0073-0010	1	Motor Bracket (Aluminum)	10	0156-0073-0010	1	Motor Bracket (Aluminum)
11	0156-0053-1000	8	1/4"-20 Hex Nut (Stainless)	11	0156-0053-1000	8	1/4"-20 Hex Nut (Stainless)
12	0155-0017-1000	4	3/8"-16 x 1" Long Screw (Stainless)	12	0155-0017-1000	4	3/8"-16 x 1" Long Screw (Stainless)
13	0155-0019-1000	4	3/8" ID x 5/8" OD Washer (Stainless)	13	0155-0019-1000	4	3/8" ID x 5/8" OD Washer (Stainless)
14	0156-0110-1000	1	Motor, TEFC, 3 Phase, 230/460 V, 50/60 Hz, 2 HP	14	0156-0110-1000	1	Motor, TEFC, 3 Phase, 230/460 V, 50/60 Hz, 2 HP
15	0156-0022-1000	1	Motor, TEFC, 1 Phase, 115/230 V, 50/60 Hz, 2 HP	15	0156-0022-1000	1	Motor, TEFC, 1 Phase, 115/230 V, 50/60 Hz, 2 HP
W	0156-0066-0100	1	Wet End Kit (Items: 1, 2, 3, 4, 5, 6, 7, 8)	W	0156-0031-0100	1	Wet End Kit (Items: 1, 2, 3, 4, 5, 6, 7, 8)

NOTE: Contact Factory for other materials and/or parts not listed. Special voltage motors are available upon special order.

**Materials in contact with the liquid:** **TE-7.5P-MD:** Polypropylene, Carbon, Ceramic, Viton  
**TE-7.5K-MD:** Natural Kynar, Carbon, Ceramic, Viton

**LIMITED WARRANTY:** March pumps are guaranteed only against defects in workmanship or materials for a period of one year from date of manufacture pumping water. For the complete warranty and to register online go to [www.marchpump.com/warranty-registration](http://www.marchpump.com/warranty-registration)

0156-0015-1500

Order Online: [www.PumpCatalog.com](http://www.PumpCatalog.com)