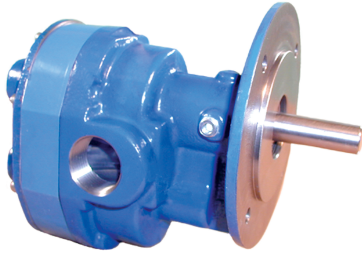


GEAR PUMPS

GEAR PUMPS SERIES C990X



FEATURES

- Ductile Iron Construction With Hardened Steel Shafts
- Fatigue Proof® Steel Helical Gears for Quiet Operation
- Mechanical Seal
- Self Lubricating Carbon Radial and Thrust Bearings
- O-Ring Seal for Maximum Leak Protection
- Durable Temperature-Resistant Paint Finish
- Easy Field Assembly to C-Face Motors
- Compact Dimensions

DRIVE

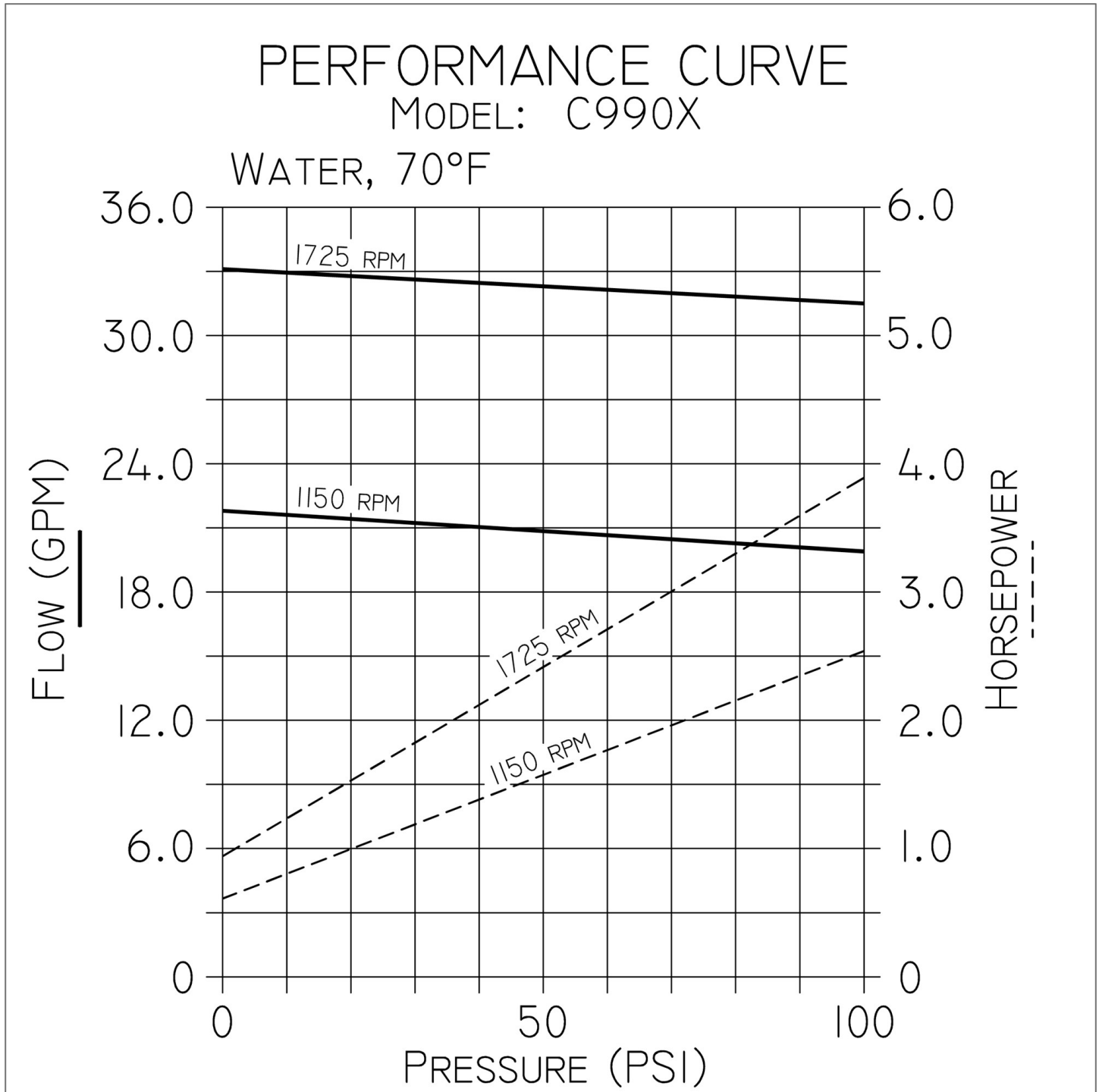
These close-coupled pumps mount directly to a full range of NEMA and IEC C-face motors by means of a suitable adapter bracket. The pump drive shaft is connected to the motor shaft by a flexible coupling. Complete pump and motor units are available.

LIQUIDS AND TEMPERATURE

Tailored specifically for wear resistance and long life in pressurized heat transfer oil circulation service for plastic injection molding and other industries. They are industrial units designed to handle fluctuating temperature cycles pumping Therminol ®, Dowtherm ®, Paratherm ® and others at elevated temperatures to 450°F, at pressures up to 100 psi, and at shaft speeds to 1750 RPM. Shafts are hardened steel. Gears are high-strength durable Fatigue Proof ® steel. Rugged ductile iron housings. High-grade carbon-graphite bushing style bearings and thrust plates are used. The shaft seal is a bellows style mechanical seal with fluoroelastomer elastomer bellows and O-ring and with carbon and ceramic wear faces. No stuffing box cooling necessary. Contact Factory for 550°F option.

These pumps are suitable for all liquids that are compatible with bronze. Most common liquids are water, oil, and mild chemicals in the pH-range of 4 to 11. Viscous liquids require reduced shaft speeds of 1150 RPM or lower. Consult factory. Liquids containing solids, abrasives, powders or paint pigments are definitely not recommended for gear pumps. If abrasives are unavoidable, use a very low shaft speed. The recommended liquid temperature range is 32oF to 140oF for longest pump life. If more extreme temperature conditions exist, our factory should be consulted. Freezing of water-filled pumps can cause damage and must be avoided. Oils at low temperatures are very viscous requiring a lower speed or extra power.

PERFORMANCE

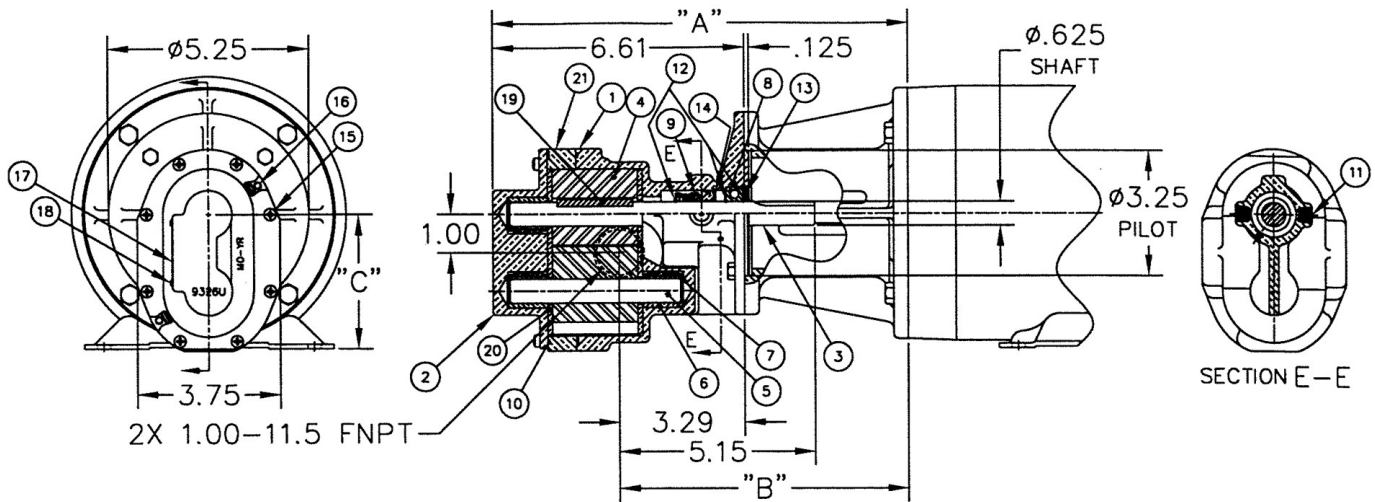


SUCTION LIFT

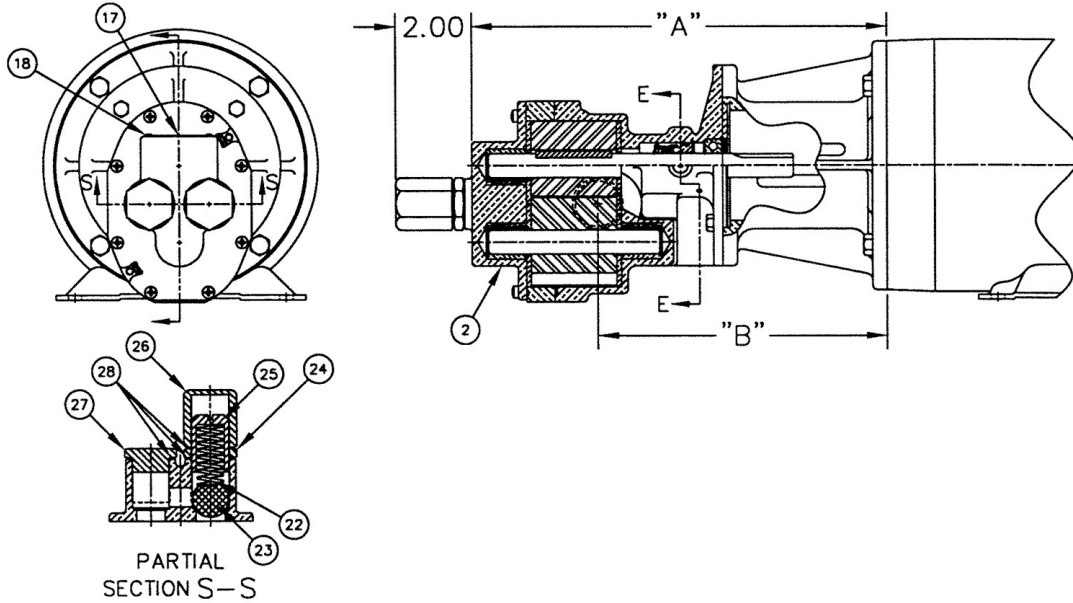
Whenever possible, place the pump at an elevation below the liquid source. However since these positive displacement external gear pumps will generate 23" HG lift, this is not a requirement. As a general rule, place the pump as close to the liquid source as possible. For a first start-up, the pump should be primed to avoid dry running. Minimum size of the suction pipe is the size of the pump inlet port. For longer suction lines (over 3 feet), the pipe size should be at least one size or two sizes larger than the pump inlet port.

EXPLODED VIEW AND PARTS LIST

DIMENSIONS AND PARTS LIST C990X2B1



DIMENSIONS AND PARTS LIST C990RX2B1



	1	2	3	4	5	6	7	8	9	10	11	12	13	14
	Body	Cover	Drive Shaft	Drive Gear	Idle Gear Assy	Carbon Bearing	Bearing Pin	Ball Bearing	Mech. Seal Assy	O-Ring	Pipe Plug	Ret. Ring	Ret. Ring	Ret. Ring
Pump No.	Qty. 1	Qty. 1	Qty. 1	Qty. 1	Qty. 1	Qty. 3	Qty. 3	Qty. 1	Qty. 1	Qty. 2	Qty. 2	Qty. 3	Qty. 1	Qty. 1
C990X2B1	9329UF4N-01	9326UN5N	2914	2892	33125	2688	2687	2461	33109	9797-045	2052	5382	5464	5374
C990RX2B1	9329UF4N-01	9327UN5B	2914	2892	33125	2688	2687	2461	33109	9797-045	2052	5382	5464	5374
	15	16	17	18	19	20	21	22	23	24	25	26	27	28
	Screw	Dowel Pin	Tag	Stick Screw	Key	Thrust Washer	Body Extension	Spring	Ball	Locknut	Adj. Screw	Bypass Nut	Plug Nut	Fiber Washer
Pump No.	Qty. 8	Qty. 2	Qty. 1	Qty. 2	Qty. 1	Qty. 4	Qty. 1	Qty. 1	Qty. 1	Qty. 1	Qty. 1	Qty. 1	Qty. 1	Qty. 3
C990X2B1	7733	2880	9344	9345	2879	2899	2900-P	N/A	N/A	N/A	N/A	N/A	N/A	N/A
C990RX2B1	7733	2880	9344	9345	2879	2899	2900-P	5277	6217	1642	5275	5276	5278	6965

Repair Kit 12294 includes items 3, 4, 5, 6, 7, 8, 9, 10, 12, 13, 14, 19 & 20

Adapter Kit	Adapter Kit Part Number	Motor Frame	Dim. "A"	Dim. "B"	Dim. "C"
H	11299C	56C	10.92	7.60	3.50
J	11300C	143TC/145TC	10.92	7.60	3.50
K	11301	182TC/184TC	11.74	8.42	4.50
L	11302	213TC/215TC	11.74	8.42	5.25

Adapter Kit	Part Number	Description
H	11299C	56C
J	11300C	143TC/145TC
K	11301	182TC/184TC
L	11302	213TC/215TC
G	11380	IEC 71
T	11386	IEC 80
U	11875C	IEC 90S / 90L
V	11876C	IEC 100L / 112M

ROTATION

