

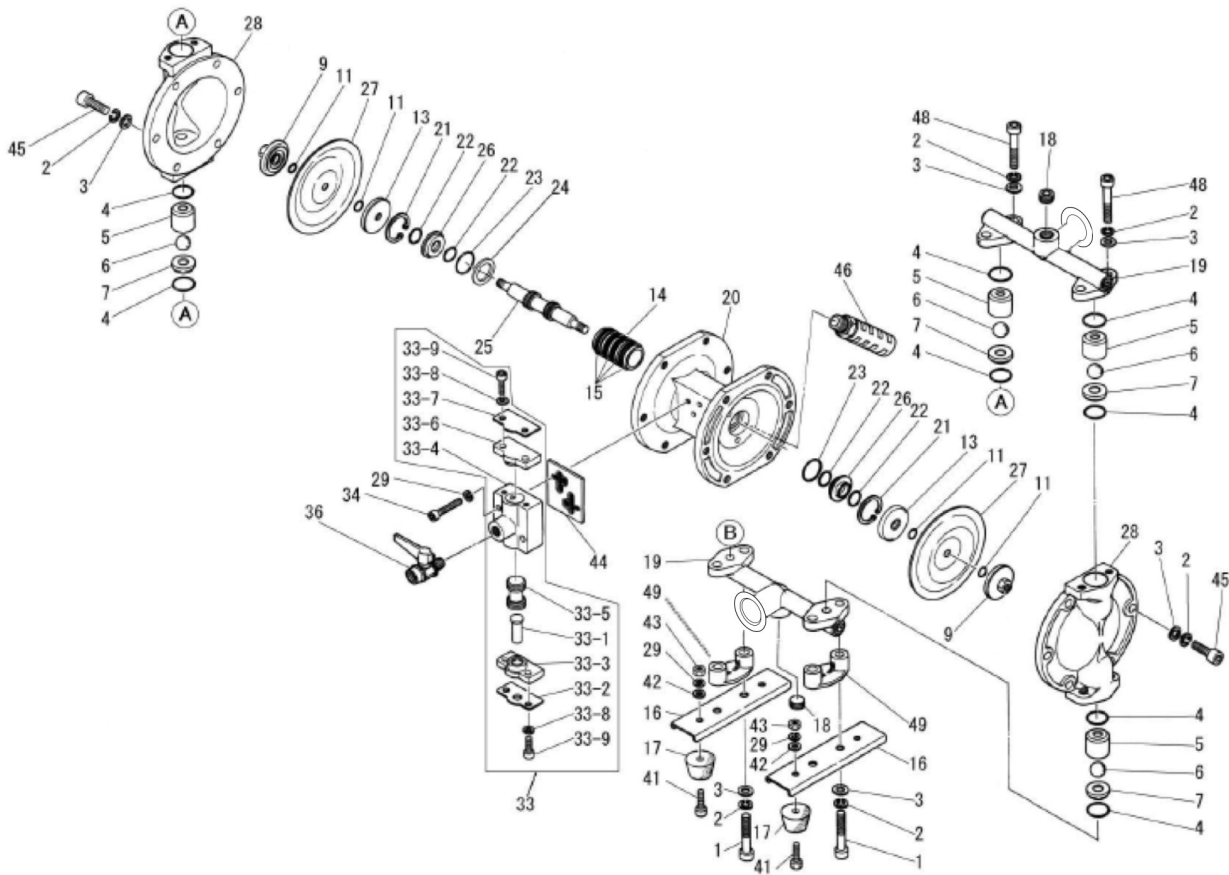
EXPLODED VIEW & PARTS LISTING

Model: DP-10BST-FDA

Part#: 851840-FDA

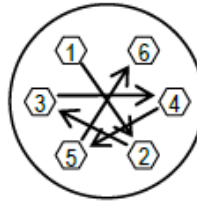


Air Operated Double Diaphragm Pump



Air Operated Double Diaphragm Pump

REF NO.	PART NO.	DESCRIPTION	QTY	REORDER
1	682971	HEXAGON SOCKET HEAD BOLT	4	
2	681300	SPRING LOCK WASHER	20	
3	631329	PLAIN WASHER	20	
4	643018	O-RING	8	
5	710637-EP	BALL GUIDE 10EP	4	
6	770931	BALL	4	
7	708913-EP	VALVE SEAT 10EP	4	
9	780179	CENTER DISK OUTER	2	
11	643005	O-RING	4	
13	709512	CENTER DISK INNER	2	
14	714678	SLEEVE	1	
15	684900	O-RING	4	
16	717184-XP	PUMP BASE	2	
17	771123	CUSHION	4	
19	831559-TC-EP	MANIFOLD	2	
20	715107-XP	BODY	1	
21	630611	RETAINING RING R TYPE	2	
22	684284	PACKING	2	
23	640131	O-RING	2	
25	801785	CENTER ROD ASSEMBLY	1	
26	708502	GUIDE BUSH	2	
27	770933	DIAPHRAGM	2	
28	710660-EP	OUT CHAMBER	2	
29	681855	SPRING LOCK WASHER	10	
30	682943	HEXAGON SOCKET HEAD BOLT	4	
31	710636	REINFORCEMENT PLATE B	1	
32	771356	CAP	1	
33	710853-XP	SPOOL VALVE CASE	1	
34	682918	HEXAGON SOCKET HEAD BOLT	2	
36	683055	BALL VALVE	1	
37	801404	SPOOL VALVE ASSEMBLY	1	
38	771357	CAP	1	
39	710587	REINFORCEMENT PLATE A	1	
40	706798	RESET BUTTON	1	
41	621102	BOLT	4	
42	631328	PLAIN WASHER	4	
43	628010	NUT	4	
44	771358	GASKET	1	
45	682944	HEXAGON SOCKET HEAD BOLT	12	
46	682520	SILENCER	1	
48	681297	HEXAGON SOCKET HEAD BOLT	4	
49	771380	SPACER	2	
KIT	K10-ST	LIQUID END		
KIT	K115-AM	AIR MOTOR		



Tightening torque for center rod and out chambers.

Center Rod 122 in-lbf (14 N-m)
Out Chambers 105 in-lbf (12 N-m)

Tightening torque for manifold retainer bolts.

BST-FDA 105 in-lbf(12 N-m)

General Tools:

- Socket wrenches - 13mm
- Hexagonal box wrenches - 5mm, 6mm
- Open-end wrenches - 21mm
- Snap ring pliers

Specialty Tools (sold separately):

- Cap and disk remover (771132)
- Sleeve remover (713148)
- Hexagon Socket Head Bolt (680544)

Miscellaneous:

- Assembly oil - turbine of none additional class 1 (equivalent to ISO VG32 grade)
- Nuts - M8x1.25
- Thread locker
- Grease - Urea grease grade (NLGI) No. 2

Customer Notes

Model #: _____
 Description: _____
 Serial #: _____
 Date Installed: _____
 Department Location: _____
 Tag/Project: _____