

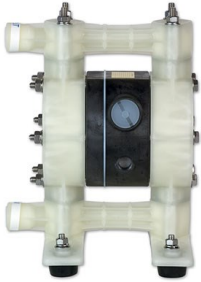
EXPLODED VIEW & PARTS LISTING

Model: NDP-15BPU

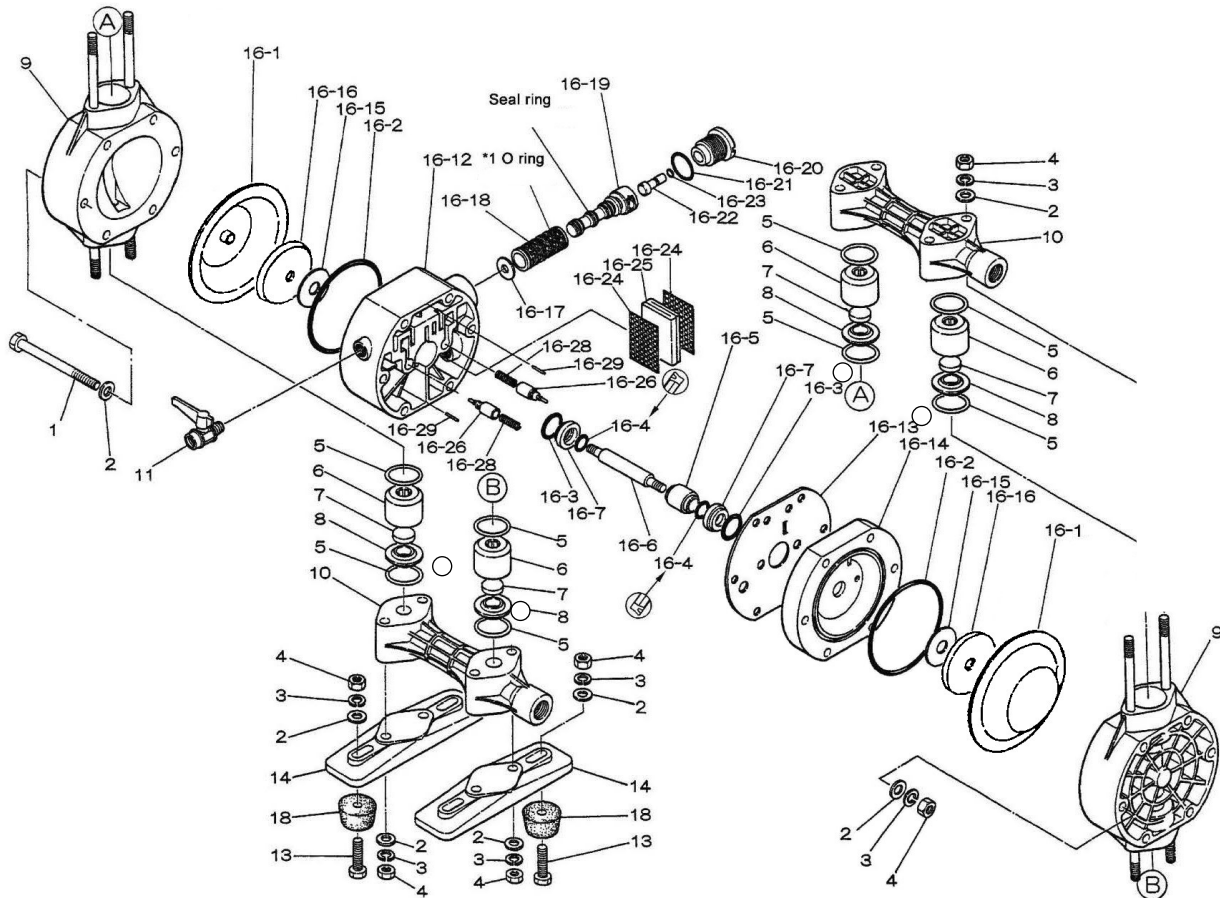
Model #: 852349-U



Air Operated Double Diaphragm Pump

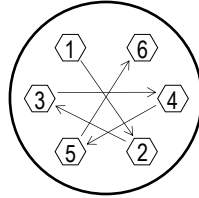


Trial Program



Air Operated Double Diaphragm Pump

REF. No.	PARTS No.	DESCRIPTION	QTY.	REORDER
1	684310	BOLT	6	
2	631329	PLAIN WASHER	24	
3	681300	SPRING LOCK WASHER	18	
4	628012	NUT	18	
5	643027	O-RING	8	
6	771806	VALVE STOPPER	4	
7	771524	BALL	4	
8	780162	VALVE SEAT	4	
9	780119	OUT CHAMBER	2	
10	780027	MANIFOLD	2	
11	686826	BALL VALVE	1	
13	621153	BOLT	4	
14	771352	BASE	2	
16-1	02-1160	DIAPHRAGM	2	
16-2	640144	O-RING	2	
16-3	640020	O-RING	2	
16-4	684284	PACKING	2	
16-5	771337	GUIDE	1	
16-6	021161	CENTER ROD	1	
16-7	771336	BUSHING	2	
16-12	780029	BODY A	1	
16-13	771347	GASKET	1	
16-14	780030	BODY B	1	
16-15	771342	CUSHION	2	
16-16	020109	CENTER DISK (INNER)	2	
16-17	771483	CUSHION	1	
16-18	804249	SLEEVE ASSEMBLY	1	
16-18-*1	683123	O-RING (SLEEVE O.D.)	6	
16-19	802835	C-SPOOL VALVE ASSY.	1	
16-19 sea	771484	SEAL RING	5	
16-20	771695	CAP	1	
16-21	640022	O-RING	1	
16-22	771350	RESET BUTTON	1	
16-23	640002	O-RING	1	
16-24	771589	MESH	2	
16-25	771465	SILENCER	1	
16-26	832141	PILOT VALVE ASSY.	2	
16-28	710577	SPRING	2	
16-29	632752	SPRING PIN	2	
18	770551	CUSHION	4	
KIT	K15-PU-B	LIQUID SIDE		
KIT	K15-AM	AIR MOTOR KIT		

**Tightening torque for center rod and out chambers.**

Center Rod 122 in-lbf {14 N-m}
Out Chambers 105 in-lbf {12 N-m}

Tightening torque for manifold retainer bolts or nuts.
BPU 105 in-lbf {12 N-m}

General Tools:

- Socket wrench - 13mm
- Open-end wrenches - 13mm, 21mm
- Plier

Special Tools (sold separately):

- Sleeve remover (713148)
- Cap & disk remover (771132)

Miscellaneous:

- Assembly Oil - turbine oil none additional class 1 (equivalent to ISO VG32 grade)
- Nuts - M8 x 1.25
- Urea grease grade (NLGI) No. 2