

# **BALDOR**® • ***RELIANCE***

## **Product Information Packet**

# **CDPWD3445**

**1HP,1750RPM,DC,56C,3435P,TEFC,F1**

| Part Detail |      |             |       |                |          |               |            |
|-------------|------|-------------|-------|----------------|----------|---------------|------------|
| Revision:   | AG   | Status:     | PRD/A | Change #:      |          | Proprietary:  | No         |
| Type:       | DC   | Prod. Type: |       | Elec. Spec:    | 34WG3675 | CD Diagram:   | CD0194     |
| Enclosure:  | TEFC | Mfg Plant:  |       | Mech. Spec:    | 34-6418  | Layout:       | 34LY6418   |
| Frame:      | 56C  | Mounting:   | F1    | Poles:         | ///      | Created Date: |            |
| Base:       | RG   | Rotation:   | R     | Insulation:    | F        | Eff. Date:    | 06-17-2016 |
| Field Type: |      | Literature: |       | Elec. Diagram: |          | Replaced By:  |            |

| Nameplate NP1509 |                          |         |                                  |
|------------------|--------------------------|---------|----------------------------------|
| CAT.NO.          | CDPWD3445                |         |                                  |
| SPEC.            | 34-6418-3675             |         |                                  |
| HP               | 1                        | ENCL    | TEFC                             |
| RPM              | 1750                     |         |                                  |
| FRAME            | 56C                      | TYPE    | 3435P                            |
| ARM V            | 90                       | ARM A   | 10                               |
| FLD V            |                          | FLD A   |                                  |
| INSUL            | F                        | AMB.    | 40                               |
| DUTY             | CONT                     | SUPPLY  | 1.5                              |
| BRG/DE           | 6203                     | BRG/ODE | 6203                             |
| BRUSHES          | 2/BP5000BK08             |         |                                  |
| SER.             |                          | BLANK   |                                  |
| BLANK            |                          |         |                                  |
| APRV-CSA         | <input type="checkbox"/> | APRV-UL | <input type="checkbox"/>         |
|                  |                          |         | APRV-CE <input type="checkbox"/> |

| Parts List    |  |          |
|---------------|--|----------|
| Part Number   | Description                              | Quantity |
| SA005387      | SA 34-6418-3675                          | 1.000 EA |
| AA003036      | AA 34-6418-3675                          | 1.000 EA |
| BP5000BK08SP  | CARBON BRUSH - GRADE SA-35               | 1.000 EA |
| HA3210B66     | .125 DIA X .281 (AUTO)                   | 2.000 EA |
| 34EP3103B50W  | FR EP MACH 34PM TEFC W/NPT LH, SPL DRN L | 1.000 EA |
| 51XB1016A06   | 10-16X3/8 HXWSSLD SERTYB                 | 3.000 EA |
| 11XW1032G06   | 10-32 X .38, TAPTITE II, HEX WSHR SLTD U | 1.000 EA |
| WD4100A17     | PLUG STIMPSON D4036                      | 1.000 EA |
| HW5100A03SP   | WAVY WASHER (W1543-017)                  | 1.000 EA |
| 34EP3300A41W  | PU ENDPLATE 56C 34-ENCL FOR WASHDOWN DC  | 1.000 EA |
| 19XA1016S06   | 10-16X 3/8" TYPE AB SS X                 | 3.000 EA |
| 11XN1032S22   | 10-32 X 1-3/8 HEX WASHER HEAD, SLOTTED   | 2.000 EA |
| BP5201A17     | BRUSH HOLDER - WITHOUT CAP & CONN.       | 2.000 EA |
| 80XN1032A03   | 10-32 X 3/16 SET SCREW                   | 2.000 EA |
| 34FN3002A01SP | EXTERNAL FAN, PLASTIC, .637/.639 HUB W/  | 1.000 EA |
| 34FH5002A01SP | FAN COVER ASSY W/SHAFT COVER             | 1.000 EA |
| 11XW1032S06   | 10-32 X .38, TAPTITE II, HEX WSHR SLTD U | 3.000 EA |
| 34CB4504W     | CON.BOX LID W/WHITE POWDER COAT          | 1.000 EA |
| 34GS1011A03   | GASKET, CONDUIT BOX LID (.062 WHITE)     | 1.000 EA |
| 59XW0832S07   | TAPTITE II,HEX WSHR UNSLTD SER,410 S.S., | 2.000 EA |
| HW4600B39SP   | V-RING SLINGER 0.550 X 0.790 X .18 VITON | 1.000 EA |
| HW4600B39SP   | V-RING SLINGER 0.550 X 0.790 X .18 VITON | 1.000 EA |
| LB1164        | LABEL,WARNING AND DRAIN                  | 1.000 EA |
| MJ5001A27     | 32220KN GRAY SEALER *MIN BUY 4 QTS=1GAL  | 0.001 QT |

| Parts List (continued) |  |          |
|------------------------|--|----------|
| Part Number            | Description                              | Quantity |
| MJ5004A05              | #242-21 LOCTITE GENERAL PURPOSE MED. STR | 0.001 EA |
| HW2502D13              | SS KEY, 3/16 SQ X 1.375                  | 1.000 EA |
| HA7000A04              | KEY RETAINER 0.625 DIA SHAFTS            | 1.000 EA |
| BP3000A02SP            | AMP LEAD CLIP #60812-2 SPL               | 1.000 EA |
| BP4543A01              | BRUSH HOLDER CAP, AE-74-SO W/O RING      | 2.000 EA |
| HW3001B02              | BRASS CUP WASHER W/GROUND SYMBOL TAB,    | 1.000 EA |
| HW4600A54              | SEAL 0.668 X 1.064 X 0.250 DOUBLE SHIELD | 1.000 EA |
| HW4600A54              | SEAL 0.668 X 1.064 X 0.250 DOUBLE SHIELD | 1.000 EA |
| WD4102A01              | SR-6L-1 HEYCO STRN RELIEF OR 23MPO6L10 M | 1.000 EA |
| MG1025W01              | WILKOFASST, 781.01, SIGNAL WHITE #9003   | 0.014 GA |
| 10XF0440S02            | 04-40 X 1/8 TYPE F HEX HD STAINLESS STIC | 2.000 EA |
| ML14A1B14              | 14 AWG,A1,BLACK                          | 8.500 IN |
| ML14A2B14              | 14 AWG,A2,BLACK                          | 8.500 IN |
| LC0194                 | CONNECTION LABEL                         | 1.000 EA |
| NP1509                 | DC, WD, UL CE CSA, W/O THERMAL           | 1.000 EA |
| HA3100S11              | THRUBOLT - 10-32 X 8.500 W               | 4.000 EA |
| MN416A01               | TAG-INSTAL-MAINT no wire (1200/bx) 11/14 | 1.000 EA |
| 27PA1001               | PKG GRP, PRINT PK1027A06                 | 1.000 EA |

**DC Motor Performance Data**

Record # 325 - Typical performance - not guaranteed values

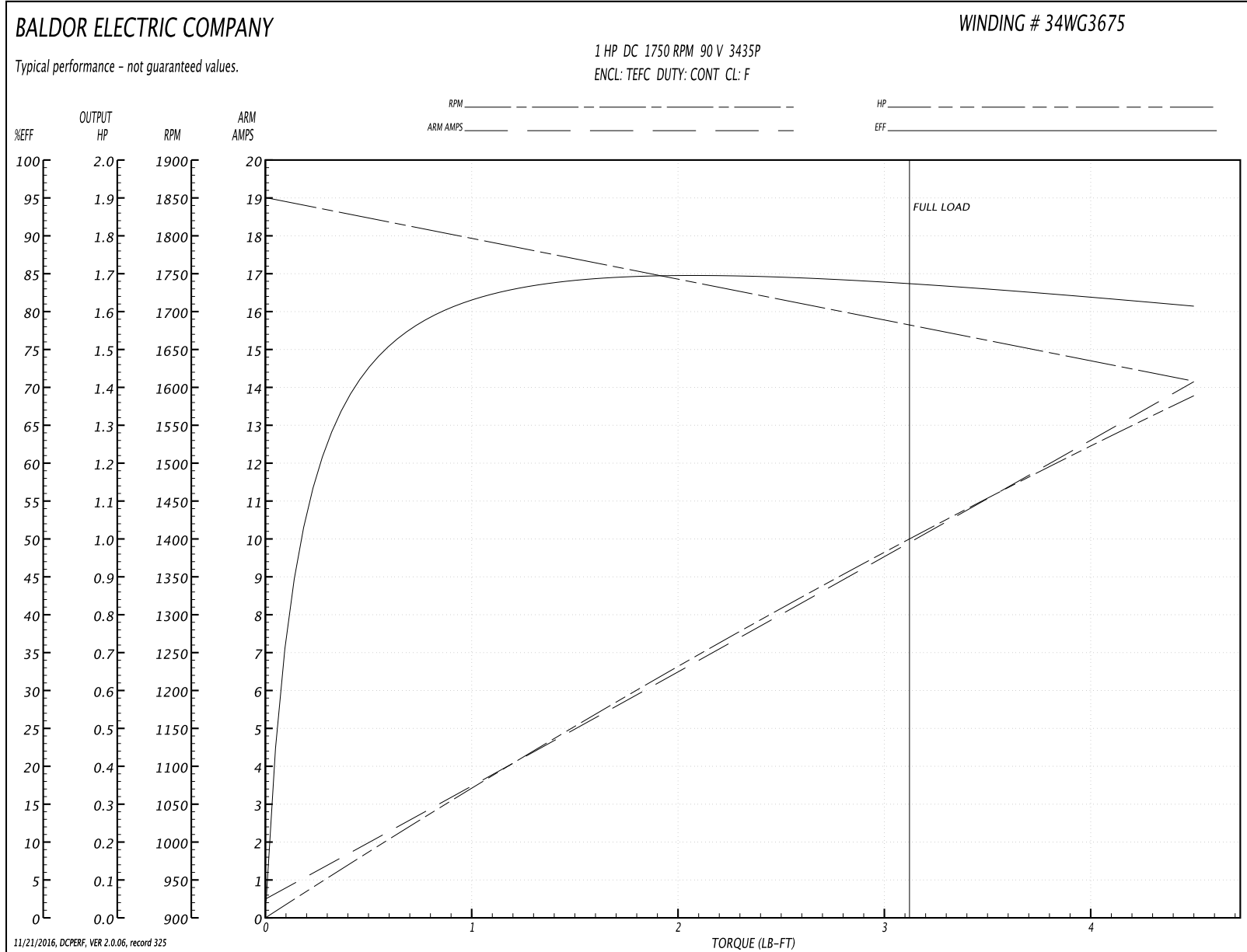
|                               |                    |                        |
|-------------------------------|--------------------|------------------------|
| <b>Winding:</b> 34WG3675-R001 | <b>Type:</b> 3435P | <b>Enclosure:</b> TEFC |
|-------------------------------|--------------------|------------------------|

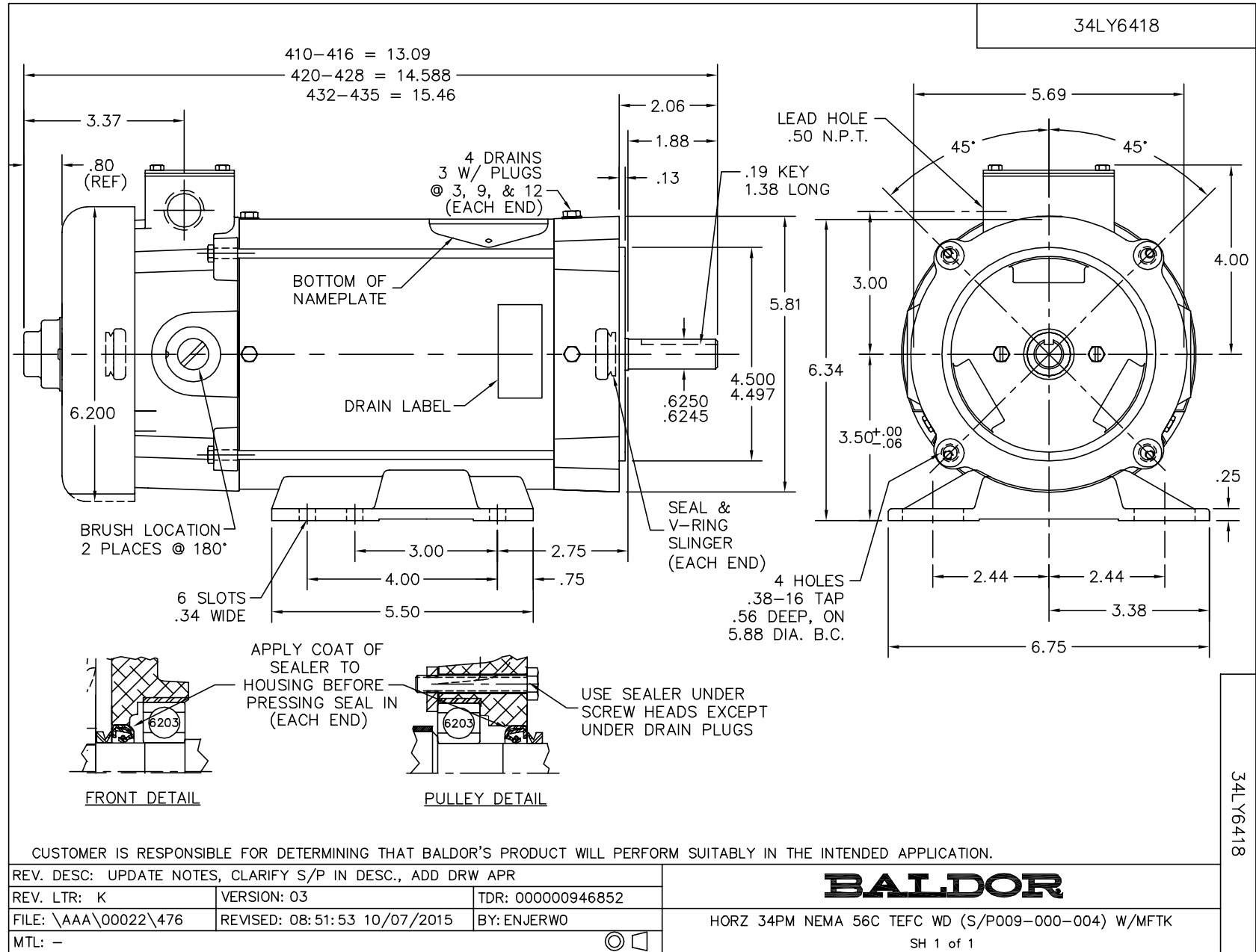
| Nameplate Data    |              | General Characteristics    |         |
|-------------------|--------------|----------------------------|---------|
| Rated Output (HP) | 1            | Armature Resistance @ 25°C | 0.537 Ω |
| R.P.M.            | 1750         |                            |         |
| Armature Volts    | 90           |                            |         |
| Armature Amps     | 10           |                            |         |
| Field Volts       |              |                            |         |
| Field Amps        |              |                            |         |
| Rating - Duty     | 40C AMB-CONT |                            |         |
| Form Factor       | 1.5          |                            |         |
|                   |              |                            |         |

Load Characteristics at 90 Armature Volts

| Load Point       | 1    | 2    | 3    | 4    | 5    | 6    |
|------------------|------|------|------|------|------|------|
| Armature Amps    | 0.5  | 5    | 7.2  | 9.65 | 11.7 | 14.2 |
| R.P.M.           | 1853 | 1758 | 1727 | 1711 | 1642 | 1604 |
| Torque ( LB-FT ) | 0    | 1.5  | 2.25 | 3    | 3.75 | 4.5  |

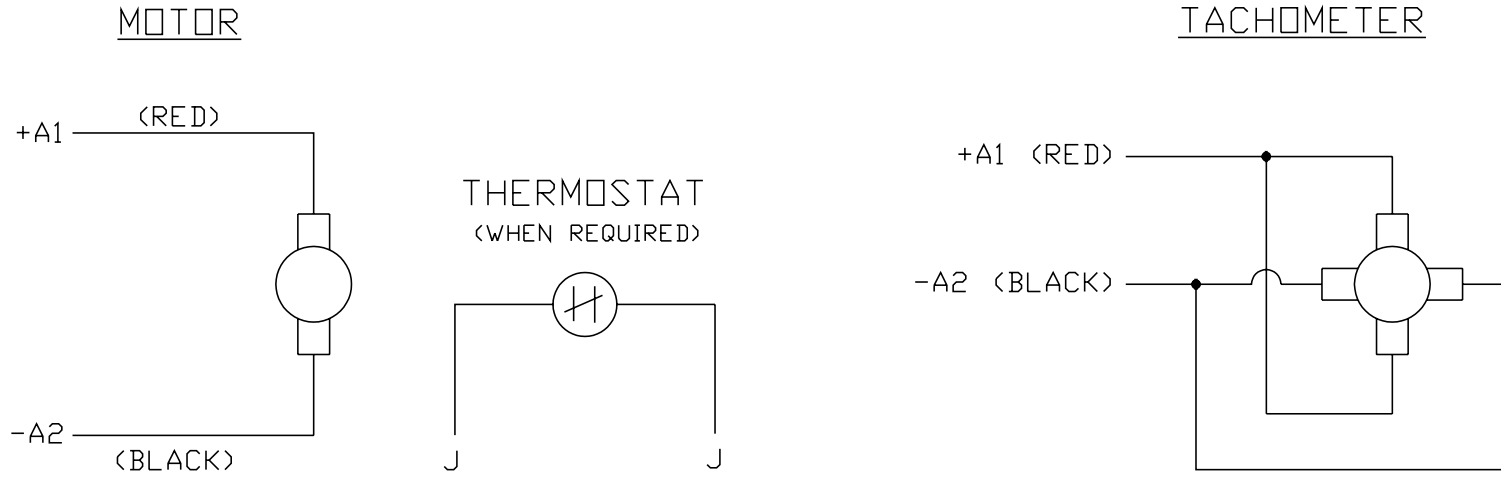
Performance Graph at 90.0 Arm V, 1.0HP Typical performance - Not guaranteed values







CD0194



NOTES:

1. CCW ROTATION AS SHOWN FACING COMMUTATOR END. TO REVERSE MOTOR ROTATION OR TACHOMETER OUTPUT POLARITY INTERCHANGE LEADS A1(RED) & A2(BLACK)
2. LEAD COLORS FOR REFERENCE ONLY & NOT SPECIFIED BY THIS DRAWING. LEAD COLORS SPECIFIED BY LAYOUT DRAWING & BILL OF MATERIAL ONLY.

|         |  |              |                   |
|---------|--|--------------|-------------------|
| MATL: - |  |              |                   |
| REV: E  | ADDED NOTE "LEAD COLORS FOR REFERENCE ONLY &..." |              |                   |
| 761000  | SCALE: -   | BY: CK       | REVISED: 07/28/95 |
|         | FILE: AAA00004503                                | TDR: 0078737 |                   |

**BALDOR ELECTRIC Co.**

CD TYPE P DC PERMANENT MAGNET MOTORS AND TACHOMETERS

CD0194