

BALDOR® • **RELIANCE**

Product Information Packet

CEBM7023T

2HP, 1755RPM, 3PH, 60HZ, 182TC, 3624M, XPNV, F1

Part Detail							
Revision:	C	Status:	PRD/A	Change #:		Proprietary:	No
Type:	AC	Prod. Type:	3624M	Elec. Spec:	36WGR978	CD Diagram:	CD0005
Enclosure:	XPNV	Mfg Plant:		Mech. Spec:	36M726	Layout:	36LYM726
Frame:	182TC	Mounting:	F1	Poles:	04	Created Date:	10-09-2015
Base:	RG	Rotation:	R	Insulation:	B	Eff. Date:	04-29-2016
Leads:	9#16					Replaced By:	
Literature:		Elec. Diagram:					

Nameplate NP1426XPSLEV					
NO.		CC	010A		
SER.					
SPEC.	36M726R978G1				
CAT.NO.	CEBM7023T				
HP	2	T. CODE	T3C		
VOLTS	230/460				
AMPS	6/3				
RPM	1760				
HZ	60	PH	3	CL	B
SER.F.	1.00	DES	B	CODE	L
RATING	40C AMB-CONT				
FRAME	182TC	NEMA-NOM-EFF		87.5	
USABLE AT 208V		PF	69		
BLANK					

Parts List		
Part Number	Description	Quantity
SA308565	SA 36M726R978G1	1.000 EA
RA295900	RA 36M726R978G1	1.000 EA
35CB3001A02SP	EXPL PROOF CONDUIT BOX, 3/4"PIPE TAP LEA	1.000 EA
11XW1032G06	10-32 X .38, TAPTITE II, HEX WSHR SLTD U	1.000 EA
HW3001B01	BRASS CUP WASHER, FOR #8 SCREW	1.000 EA
36EP1704A01	SPL FACE MTD FR. E.P. 36 FOR BRAKE MOTOR	1.000 EA
HW5100A06	W2420-025 WVY WSHR (WB)	1.000 EA
36EP1703A01	PU ENDPLATE, MACH	1.000 EA
51XN1032A20	10-32 X 1 1/4 HX WS SL SR	2.000 EA
HW4001A01	1/4 HX SOC PIPE PLG (F/S) ALLOY STEEL W/	2.000 EA
60XN1032A07	10-32 X 1/2 TRUSS HEAD, TORX SERRATED ZN	2.000 EA
HW2501D13	KEY, 3/16 SQ X 1.375	1.000 EA
84XN3816J12	3/8-16X 3/4 SOCK HD, BK OX	4.000 EA
35CB3500A01SP	CONDUIT BOX LID, MACH	1.000 EA
51XN2520A16	SCREW, HEX WS SLT, ZN, 1/4-20 X 1.00	4.000 EA
HW2501E16	3KEY, 1/4 SQ X 1.750	1.000 EA
HA7000A02	KEY RETAINER RING, 1 1/8 DIA, 1 3/8 DIA	1.000 EA
85XU0407S04	4X1/4 U DRIVE PIN STAINLESS	6.000 EA
NP0018F	ALUM UL XP CONDUIT BOX NAMEPLATE	1.000 EA
MJ1000A02	GREASE, POLYREX EM EXXON (USe 4824-15A)	0.050 LB
MG1025G29	WILKOFASST, 789.229, DARK CHARCOAL GRAY	0.022 GA
HA3105A06	THRUBOLT- 3/8-16 X 10.500 X	4.000 EA
65BK5100DQB	1-065-351-05-DQB BRAKE X	1.000 EA
WD1000D42	TERM,FORK,NON-INSUL,22-18AWG,#6 BOLT (T&	2.000 EA

Parts List (continued)		
Part Number	Description	Quantity
LB1119N	WARNING LABEL	1.000 EA
LC0145B01	CONNECTION LABEL	1.000 EA
MN416A01	TAG-INSTAL-MAINT no wire (1200/bx) 11/14	1.000 EA
NP1426XPSLEV	SS XP UL CSA-EEV CC CL-I GP-D	1.000 EA
G0PA1000	PKG GRP, PRINT PK1026A06	1.000 EA

AC Induction Motor Performance Data

Record # 54943 - Typical performance - not guaranteed values

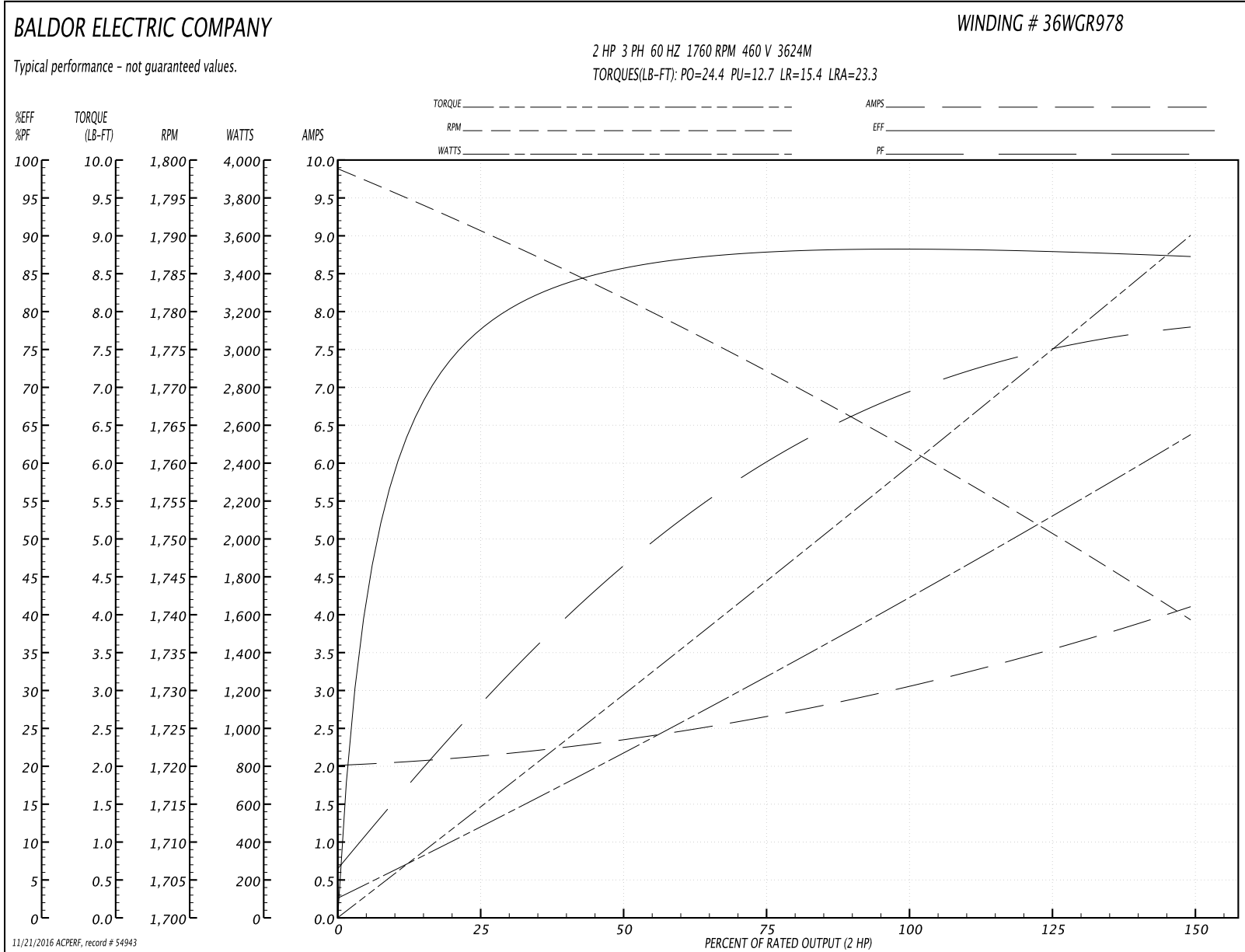
Winding: 36WGR978-R001	Type: 3624M	Enclosure: XPNV
-------------------------------	--------------------	------------------------

Nameplate Data				460 V, 60 Hz: High Voltage Connection	
Rated Output (HP)	2			Full Load Torque	5.93 LB-FT
Volts	230/460			Start Configuration	direct on line
Full Load Amps	6/3			Breakdown Torque	24.4 LB-FT
R.P.M.	1760			Pull-up Torque	12.7 LB-FT
Hz	60	Phase	3	Locked-rotor Torque	15.4 LB-FT
NEMA Design Code	B	KVA Code	L	Starting Current	23.3 A
Service Factor (S.F.)	1			No-load Current	2.03 A
NEMA Nom. Eff.	87.5	Power Factor	69	Line-line Res. @ 25°C	5.6559 Ω
Rating - Duty	40C AMB-CONT			Temp. Rise @ Rated Load	63°C

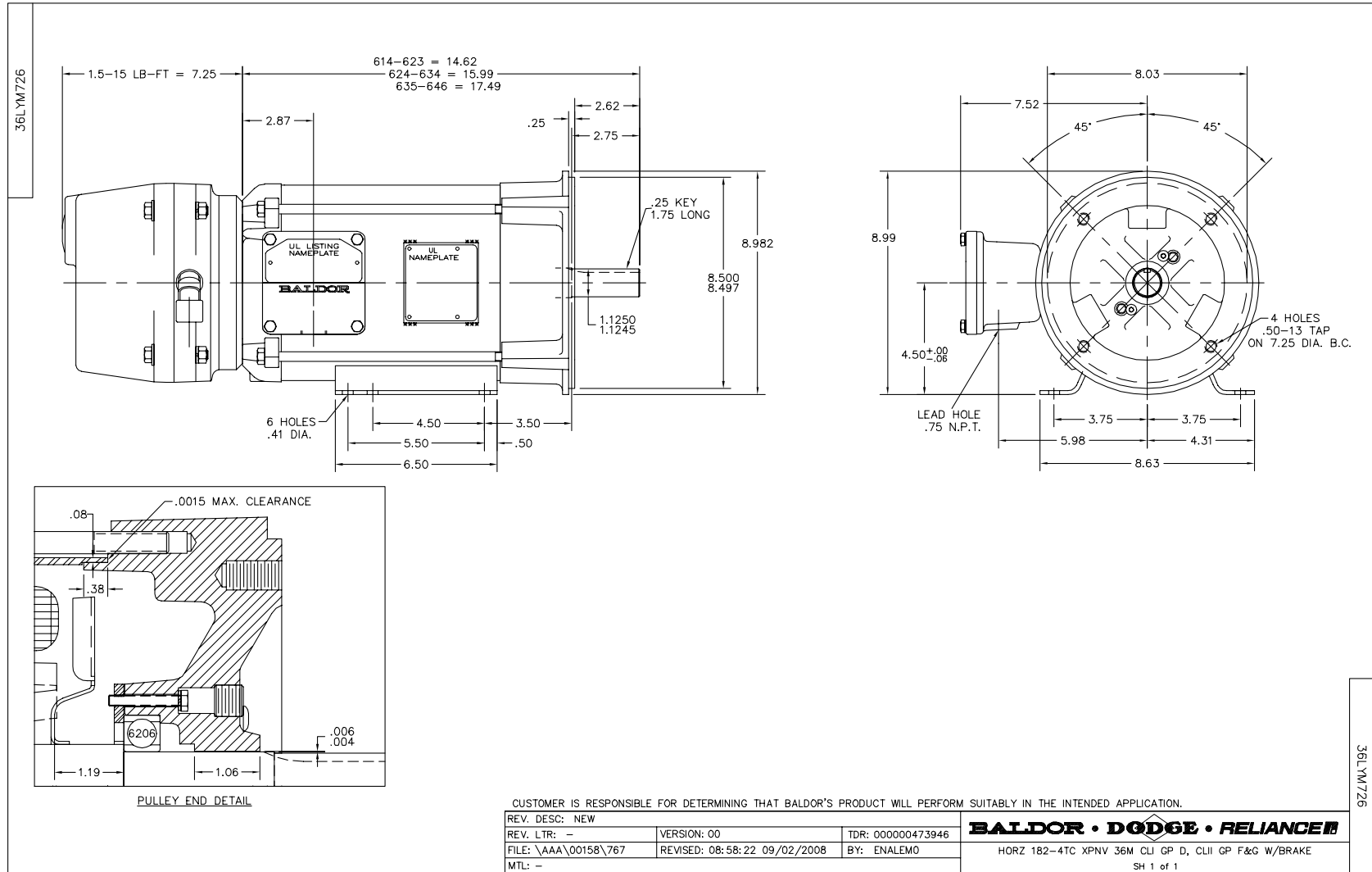
Load Characteristics 460 V, 60 Hz, 2 HP

% of Rated Load	25	50	75	100	125	150
Power Factor	29	46	60	69	75	78
Efficiency	77.6	85.5	87.8	88.5	88	87.2
Speed	1790.5	1781.8	1772.4	1762.2	1750.8	1739.2
Line amperes	2.11	2.34	2.66	3.04	3.57	4.09

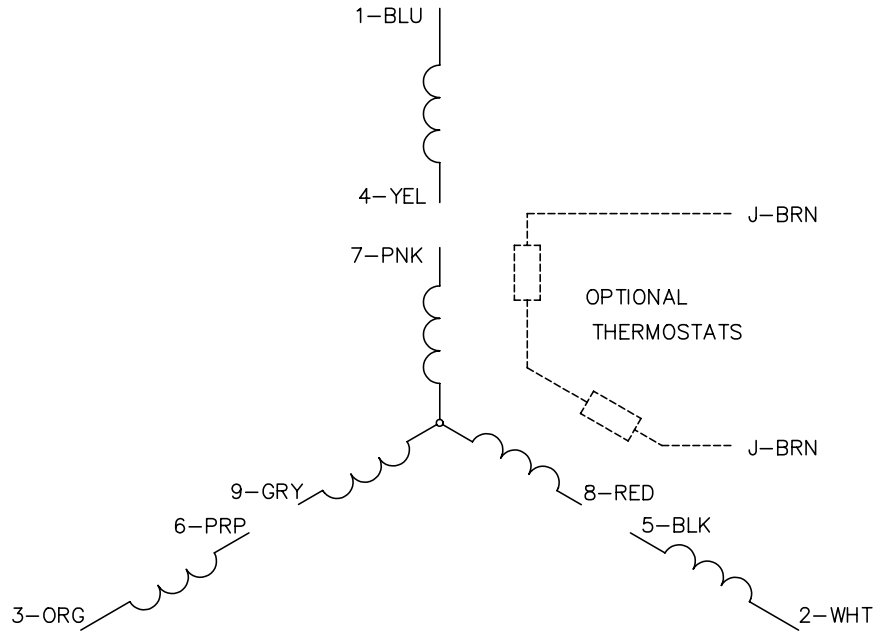
Performance Graph at 460V, 60Hz, 2.0HP Typical performance - Not guaranteed values



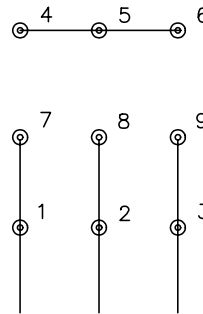
11/21/2016 ACPERF, record # 54943



CD0005

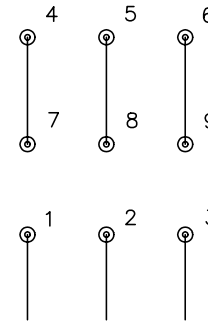


LOW VOLTAGE
(2Y)



LINE

HIGH VOLTAGE
(1Y)



LINE

NOTES:

1. INTERCHANGE ANY TWO LINE LEADS TO REVERSE ROTATION.
2. OPTIONAL THERMOSTATS ARE PROVIDED WHEN SPECIFIED.
3. ACTUAL NUMBER OF INTERNAL PARALLEL CIRCUITS MAY BE A MULTIPLE OF THOSE SHOWN ABOVE.
4. LEAD COLORS ARE OPTIONAL. LEADS MUST ALWAYS BE NUMBERED AS SHOWN.

REV. DESC: REVISE TO SHOW OPTIONAL COLORS			
REV. LTR: E	BY: JLP	REVISED: 01/19/99 10:15	TDR: 0171435
90000		FILE: AAA00005140	MDL: -
		MTL: -	

BALDOR ELECTRIC Co.

3PH, DV, 9 LEADS

CD0005