

# **BALDOR**® • *RELIANCE*

## **Product Information Packet**

# **CECP84312T-4**

**50HP, 1185RPM, 3PH, 60HZ, 365TC, A36062M, TEFC**

Part Detail							
Revision:	J	Status:	PRD/A	Change #:		Proprietary:	No
Type:	AC	Prod. Type:	A36062M	Elec. Spec:	A36WG0777	CD Diagram:	416820-036
Enclosure:	TEFC	Mfg Plant:		Mech. Spec:		Layout:	617428-132
Frame:	365TC	Mounting:	F1	Poles:	06	Created Date:	11-27-2013
Base:		Rotation:	R	Insulation:	F	Eff. Date:	10-28-2016
Leads:	3#4					Replaced By:	
Literature:		Elec. Diagram:					

Nameplate NP2496L	
MOBIL POLYREX EM	

Nameplate 000613007EX

CAT NO	CECP84312T-4	SPEC NO.	A36-4048-0777
NO. ROTOR BARS	55	GREASE TYPE	POLYREX EM
NO. SLOTS	72	NL AMPS AT RATED VOLTAGE	20.8
5 YEAR WARRANTY		WINDING RES @25 C	.12973
MFG. DATE		SER.NO	
			OHMS

Nameplate NP3237									
CAT NO	CECP84312T-4		SPEC NO.	A36-4048-0777					
HP	50	AMPS	61.7	VOLTS	460		DESIGN	B	
FRAME SIZE	365TC	RPM	1185	HZ	60	AMB	40	SF	1.15
D.E. BRG.DATA	6313	O.D.E. BRG.DATA	6313		PH	3		DUTY	CONT
D.E. BRG.	65BC03J30X		TYPE	P	ENCL	TEFC	CODE	F	
O.D.E. BRG.	65BC03J30X		POWER FACTOR	81		NEMA-NOM-EFFICIENCY	94.1		
3/4 LOAD EFF.	94.4	IP	56	MAX CORR KVAR	14		GUARANTEED EFFICIENCY	93	
TEMP CODE	T3A	TEMP =	180		VT HZ	0-60			
CHP HZ	60-90	CT HZ	6-60						
INVERTER-TEMP-CODE	T3A								
SER.NO.				MOTOR WEIGHT	908				

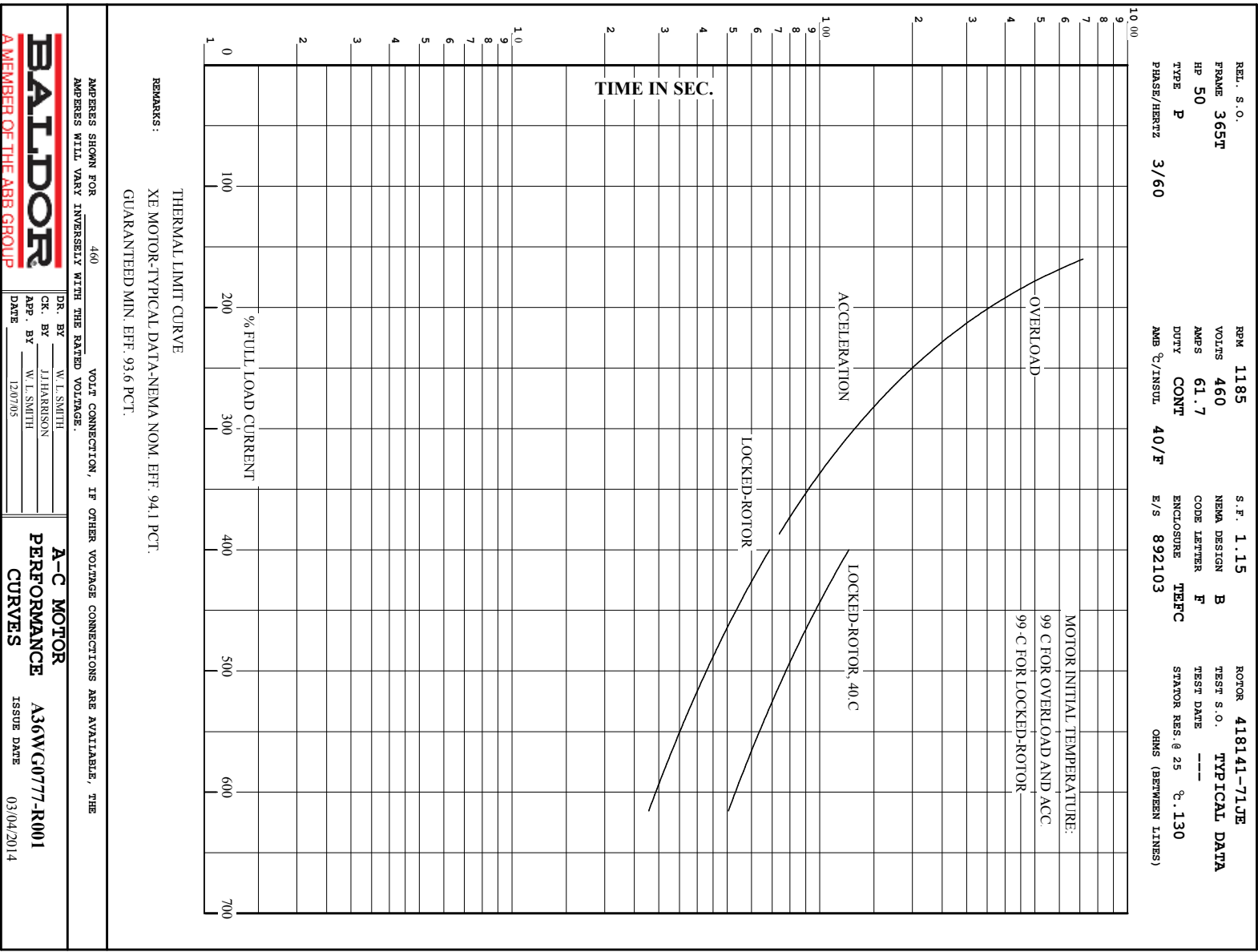
Parts List		
Part Number	Description	Quantity
SA272928	SA A36-4048-0777	1.000 EA
RA259533	RA A36-4048-0777	1.000 EA
421948051	LABEL, MYLAR	1.000 EA
NP2496L	MOTOR LUBE NAMEPLATE	1.000 EA
000613006PU	N/P (RELEASE QTY 10,000) UL CSA LABEL	1.000 EA
000613007EX	SS IEEE 841 EMBOSSED AUXILIARY NAMEPLATE	1.000 EA
000692000JP	N/P	1.000 EA
000692000VH	N/P	1.000 EA
000692000VD	LABEL WARNING	1.000 EA
NP3237	SS SUPER E INVERTER DUTY IEEE 841	1.000 EA
085922083BH	BRKT 360 085922072WCC KB	1.000 EA
415072001B	CLAMP	1.000 EA
078559034A	+F/C A 078559001A - 360	1.000 EA
034180012DA	KEY 1X4X1/4X1-1/2 L	1.000 EA
412118006A	DRAIN	1.000 EA
078550001M	FAN KB 60/30 (30) 360	1.000 EA
004824015A	GREASE POLYREX EM	0.540 LB
032018012DK	HHCS 1/2-13X1-1/2 PLTD.	4.000 EA
032018008AK	HHCS 1/4-20X1 PLATED	4.000 EA
032018024CK	HHCS 3/8-16X3 PLTD.	3.000 EA
415096002A	CPLG 1/8 HEX TYPE	1.000 EA
410700004F	WSHR	1.000 EA
423709011C	WASHER	3.000 EA
035000001G	GREASE RELIEF FITTING, ALEMITE 317400	1.000 EA

Parts List (continued)		
Part Number	Description	Quantity
034530052AB	P/NIP 1/8X6-1/2 GALV.	1.000 EA
034530032BB	P/NIP 1/4X4" SCHED 40	1.000 EA
034630002AB	CPLG 1/4" PLATED	1.000 EA
415028008E	INPRO SEAL - 360	1.000 EA
034600001AA	BUSH 1/4TO1/8 BLACK	1.000 EA
034600001AA	BUSH 1/4TO1/8 BLACK	1.000 EA
085922080BD	C-FACE BRKT 360 085922069WCA	1.000 EA
032018012DK	HHCS 1/2-13X1-1/2 PLTD.	4.000 EA
032018024CK	HHCS 3/8-16X3 PLTD.	3.000 EA
412118006A	DRAIN	1.000 EA
423709011C	WASHER	3.000 EA
415028008E	INPRO SEAL - 360	1.000 EA
035000001G	GREASE RELIEF FITTING, ALEMITE 317400	1.000 EA
076708000BB	C/B - 360	1.000 EA
415039016A	TERBD, 360-400	1.000 EA
076709000A	C/B - 360	1.000 EA
067053000B	GASK 320-400	1.000 EA
418150003A	GREASE FITTING CAP	1.000 EA
032018010CK	HHCS 3/8-16X1-1/4 PLTD.	4.000 EA
035000001A	ALFTG 1/8" 1610-BL	1.000 EA
415000103D	T/LUG #4AWG-1/0AWG W/HOLE FOR .250 BOLT	1.000 EA
033512008LB	HHTTS 1/4-20X1 PLATED	4.000 EA
406099000A	PLUG - FAN COVER 320-440	1.000 EA
034000014AB	WSH ID.406 OD.812 TH.065	4.000 EA

Product Information Packet: CECP84312T-4 - 50HP,1185RPM,3PH,60HZ,365TC,A36062M,TEFC

033512004LB	HHTTS 1/4-20X1/2 PLTD.	1.000 EA
035000001A	ALFTG 1/8" 1610-BL	1.000 EA
418150003A	GREASE FITTING CAP	1.000 EA
MG1025N19	WILKO 778.50 BLUE GREEN - 55 GAL DRUMS	0.250 GA
033775004EA	DRSCR #6-1/4 304 S.S.	4.000 EA
034180034HA	KEY 5/8X5/8X4-1/4 L	1.000 EA
HW1000A32	5/16 FL WASHER WIDE,ID=.344,OD=1.125	3.000 EA
032509020C	CARRIAGE BOLT - 360	3.000 EA
LB1449	DIV-2/NEC WARNING LABEL	1.000 EA
14PA1000	PACKAGING 314 GROUP COMBINED PRINT	1.000 EA





**BALDOR**  
A MEMBER OF THE ABB GROUP

DR. BY W. L. SMITH  
CK. BY J. HARRISON  
APP. BY W. L. SMITH  
DATE 12/07/05

**A-C MOTOR**  
**PERFORMANCE**  
**CURVES**

A36W/C0777-R001  
ISSUE DATE 03/04/2014

REL. S.O.	FRAME	HP	TYPE	PHASE/HERTZ	RPM	VOLTS
	365T	50	P	3/60	1185	460
AMPS	DUTY	AMB °C/INSUL.	S.F.	NEMA DESIGN	CODE LETTER	ENCL.
61.7	CONT	40/F	1.15	B	F	TEFC
E/S	ROTOR	TEST S.O.	TEST DATE	STATOR RES. @25 °C (BETWEEN LINES)		
892103	418141-71JE	---	---	---		.130

PERFORMANCE

LOAD	HP	AMPERES	RPM	POWER FACTOR %	EFFICIENCY %
NO LOAD	0	21.3	1200	5.08	0
1/4	12.5	26.2	1197	49.4	90.8
2/4	25.0	35.6	1193	70.0	93.9
3/4	37.5	47.8	1190	77.8	94.4
4/4	50.0	61.7	1186	80.6	94.2
5/4	62.5	76.7	1182	81.5	93.6

SPEED TORQUE

	RPM	TORQUE % FULL LOAD	TORQUE LB.-FT.	AMPERES
LOCKED ROTOR	0	154	340	345
PULL UP	650	133	295	305
BREAKDOWN	1133	230	510	191
FULL LOAD	1186	100	221	61.7

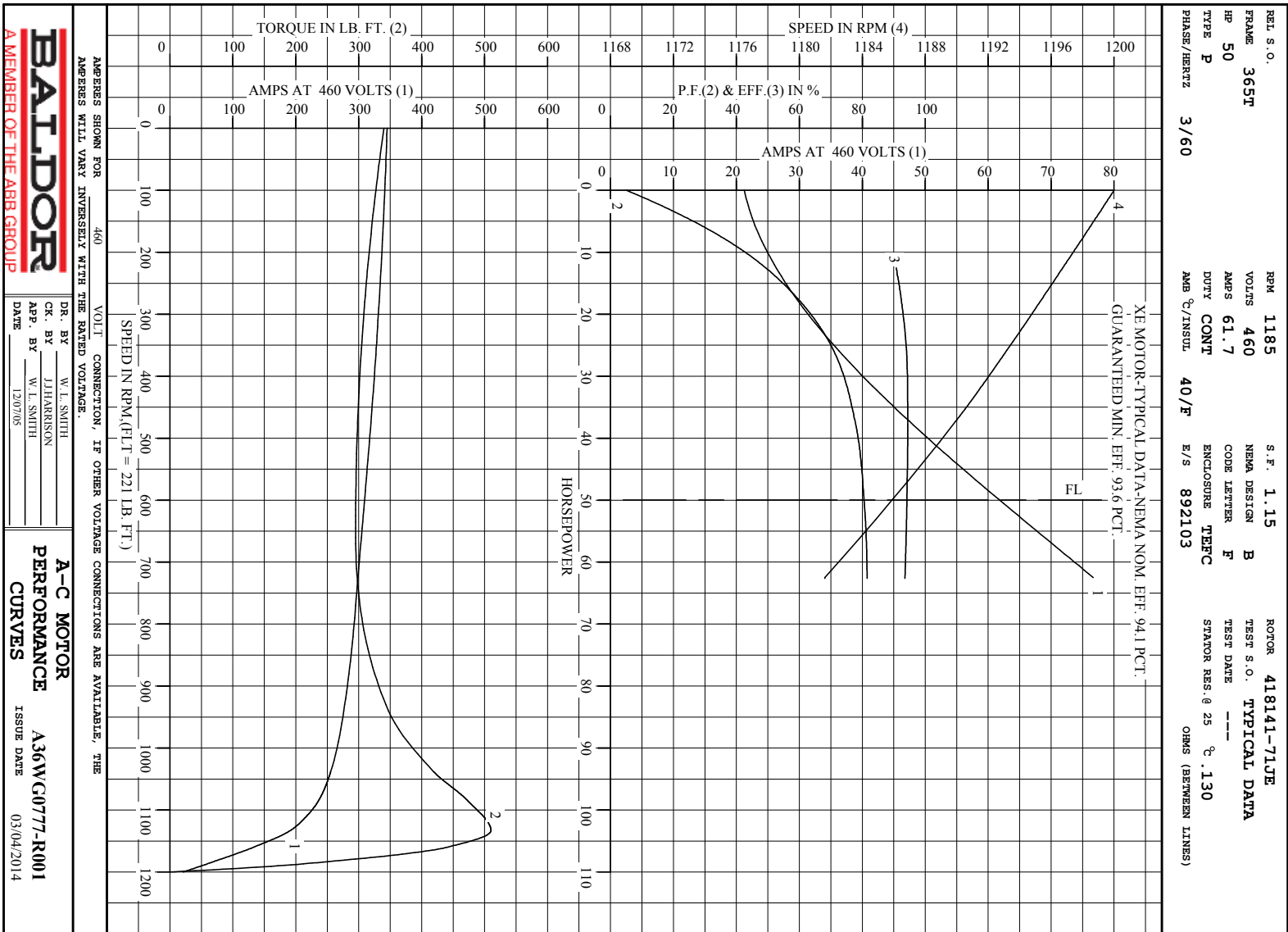
AMPERES SHOWN FOR 460. VOLT CONNECTION. IF OTHER VOLTAGE CONNECTIONS ARE AVAILABLE, THE AMPERES WILL VARY INVERSELY WITH THE RATED VOLTAGE

REMARKS: TYPICAL DATA  
 XE MOTOR-TYPICAL DATA-NEMA NOM. EFF. 94.1 PCT.  
 GUARANTEED MIN. EFF. 93.6 PCT.

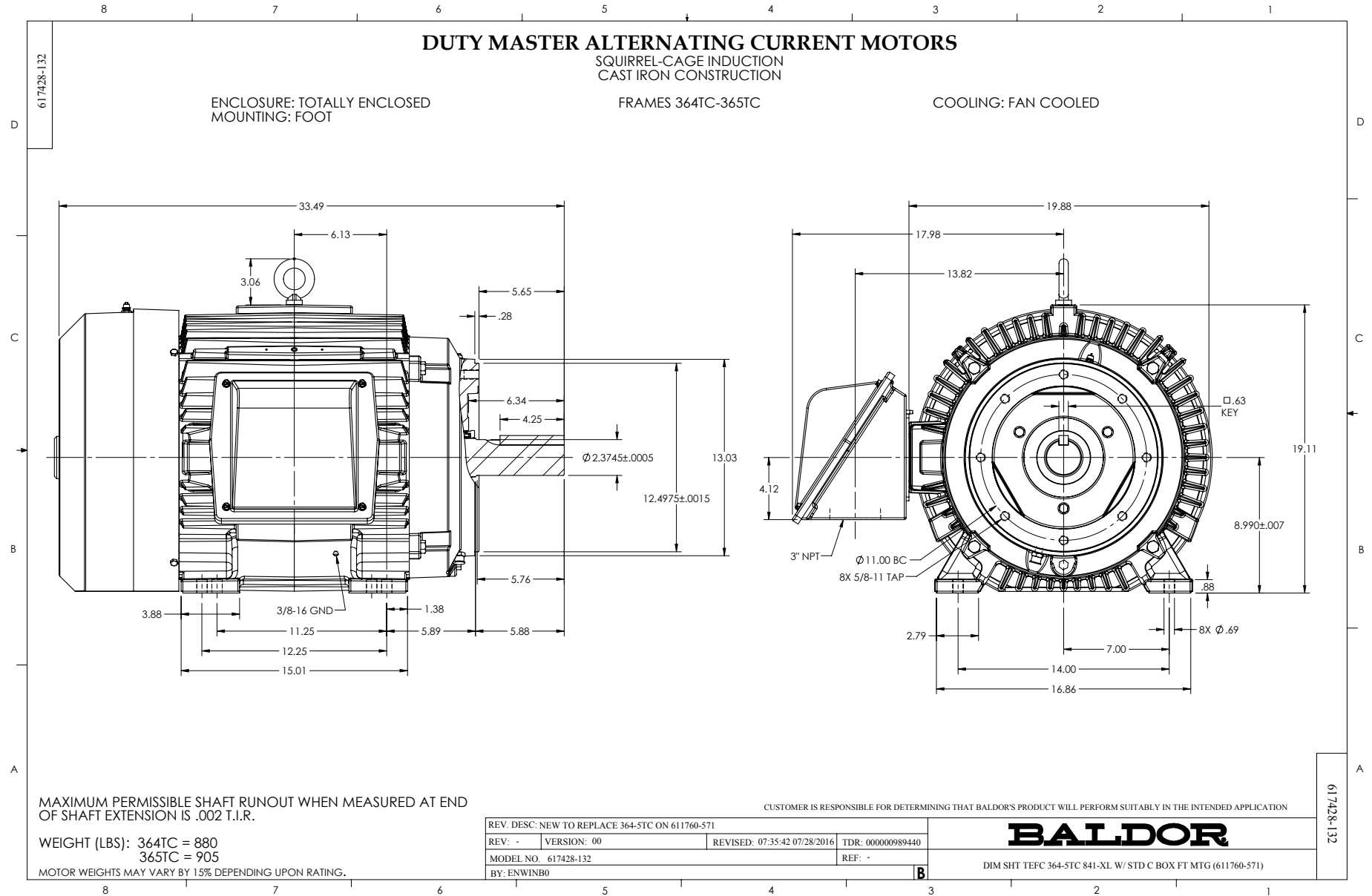


DR. BY W. L. SMITH  
 CK. BY J.J. HARRISON  
 APP. BY W. L. SMITH  
 DATE 12/07/05

A-C MOTOR PERFORMANCE DATA  
 A36MG0777-R001  
 ISSUE DATE 03/04/20

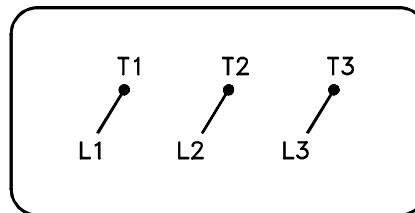


Printed on 3/4/14 7:40 @ fagsun



416820-036

A-C MOTOR  
 CONNECTION DIAGRAM  
 STANDARD 3 LEAD CONNECTED



(N.P. 1575-BA)

416820-036

REV. DESC: LOADED TO BUS, C/R 335225		
REV. LTR: -	VERSION: 00	TDR: 000000538207
FILE: \MGA\00000\682	REVISED: 11:54:06 04/30/2010	
MTL: -	BY: RAGRA	

**BALDOR**

CONN DIAG - STANDARD 3 LEAD

SH 1 of 1

Marketing maintained PDF of MN408:

<http://www.baldor.com/support/Literature/Load.ashx/MN408?ManNumber=MN408>

Marketing maintained PDF of MN416:

<http://www.baldor.com/support/Literature/Load.ashx/MN416?ManNumber=MN416>