

# **BALDOR® • RELIANCE**

## **Product Information Packet**

# **M1558T**

**5/1.3HP, 1725/850RPM, 3PH, 60HZ, 184T, 3640M**

Part Detail							
Revision:	W	Status:	PRD/A	Change #:		Proprietary:	No
Type:	AC	Prod. Type:	3640M	Elec. Spec:	36WGX366	CD Diagram:	CD0032
Enclosure:	TEFC	Mfg Plant:		Mech. Spec:	36A001	Layout:	36LYA001
Frame:	184T	Mounting:	F1	Poles:	04/08	Created Date:	
Base:	RG	Rotation:	R	Insulation:	H	Eff. Date:	06-26-2015
Leads:	6#14					Replaced By:	
Literature:		Elec. Diagram:					

Nameplate NP1256L										
CAT.NO.	M1558T									
SPEC.	36A01X366									
HP	5/1.3									
VOLTS	208-230									
AMP	13.5/5.2									
RPM	1725/850									
FRAME	184T				HZ	60			PH	3
SER.F.	1.15		CODE	K	DES	B		CLASS	F	
NEMA-NOM-EFF			PF							
RATING	40C AMB-CONT									
CC									USABLE AT 208V	
DE	6206				ODE	6205				
ENCL	TEFC		SN							

Parts List		
Part Number	Description	Quantity
SA033916	SA 36A01X366	1.000 EA
RA029944	RA 36A01X366	1.000 EA
36CB3004	36 CB CASTING W/1.09 DIA LEAD HOLE @ 6:0	1.000 EA
36GS1000	GASKET-CONDUIT BOX, .06 THICK #SV-330 LE	1.000 EA
51XB1016A08	10-16X 1/2HXWSSLD SERTYB	2.000 EA
11XW1032G06	10-32 X .38, TAPTITE II, HEX WSHR SLTD U	1.000 EA
HW3001B01	BRASS CUP WASHER, FOR #8 SCREW	1.000 EA
36FE3104A01	FREP MACH ASSEMBLY FOR ROUTING	1.000 EA
HW4500A01	1641B(ALEMITE)400 UNIV, GREASE FITT	1.000 EA
HW5100A05	WVY WSHR F/205 & 304 BRGS	1.000 EA
36EP3100A01SP	PUEP ASSEMBLY FOR ROUTING PURPOSES	1.000 EA
HW4500A01	1641B(ALEMITE)400 UNIV, GREASE FITT	1.000 EA
XY2520A12	1/4-20 HEX NUT, DIRECTIONAL SERRATIONS	4.000 EA
51XB1214A16	12-14X1.00 HXWSSLD SERTYB	1.000 EA
36FH4009A102	IEC FH GREASER PRIMED	1.000 EA
51XW1032A06	10-32 X .38, TAPTITE II, HEX WSHR SLTD S	3.000 EA
36CB4516	36 LIPPED CB LID	1.000 EA
37GS1001	GASKET, CONDUIT BOX LID, .06 THICK LEXID	1.000 EA
51XW0832A07	8-32 X .44, TAPTITE II, HEX WSHR SLTD SE	4.000 EA
HW2501E16	3KEY, 1/4 SQ X 1.750	1.000 EA
HA7000A02	KEY RETAINER RING, 1 1/8 DIA, 1 3/8 DIA	1.000 EA
85XU0407S04	4X1/4 U DRIVE PIN STAINLESS	2.000 EA
HW3200A01	3/8-16X3/4 I-BLT WELDED F/S	1.000 EA
MJ1000A02	GREASE, POLYREX EM EXXON (USe 4824-15A)	0.050 LB

<b>Parts List (continued)</b>		
<b>Part Number</b>	<b>Description</b>	<b>Quantity</b>
36FN3000A01SP	EXFN, PLASTIC, 7.00 OD, .912 ID	1.000 EA
MG1000G27	MED CHARCOAL METALLIC GREY 400-0096	0.022 GA
LB1115N	LABEL,LIFTING DEVICE (ON ROLLS)	1.000 EA
HA3101A28	THRUBOLT 1/4-20 X 12.500 OHIO ROD	4.000 EA
LB1119N	WARNING LABEL	1.000 EA
LC0032	CONNECTION LABEL	1.000 EA
NP1256L	ALUM UL CSA CC	1.000 EA
G0PA1000	PKG GRP, PRINT PK1026A06	1.000 EA
MN416A01	TAG-INSTAL-MAINT no wire (1200/bx) 11/14	1.000 EA

<b>Accessories</b>		
<b>Part Number</b>	<b>Description</b>	<b>Multiplier</b>
36-3301	C FACE KIT	A8
36EP1304A62SP	FLANGE MTD ENDPLATE 182-4TD -ENCL (LESS	A8

**AC Induction Motor Performance Data**

Record # 36966 - Typical performance - not guaranteed values

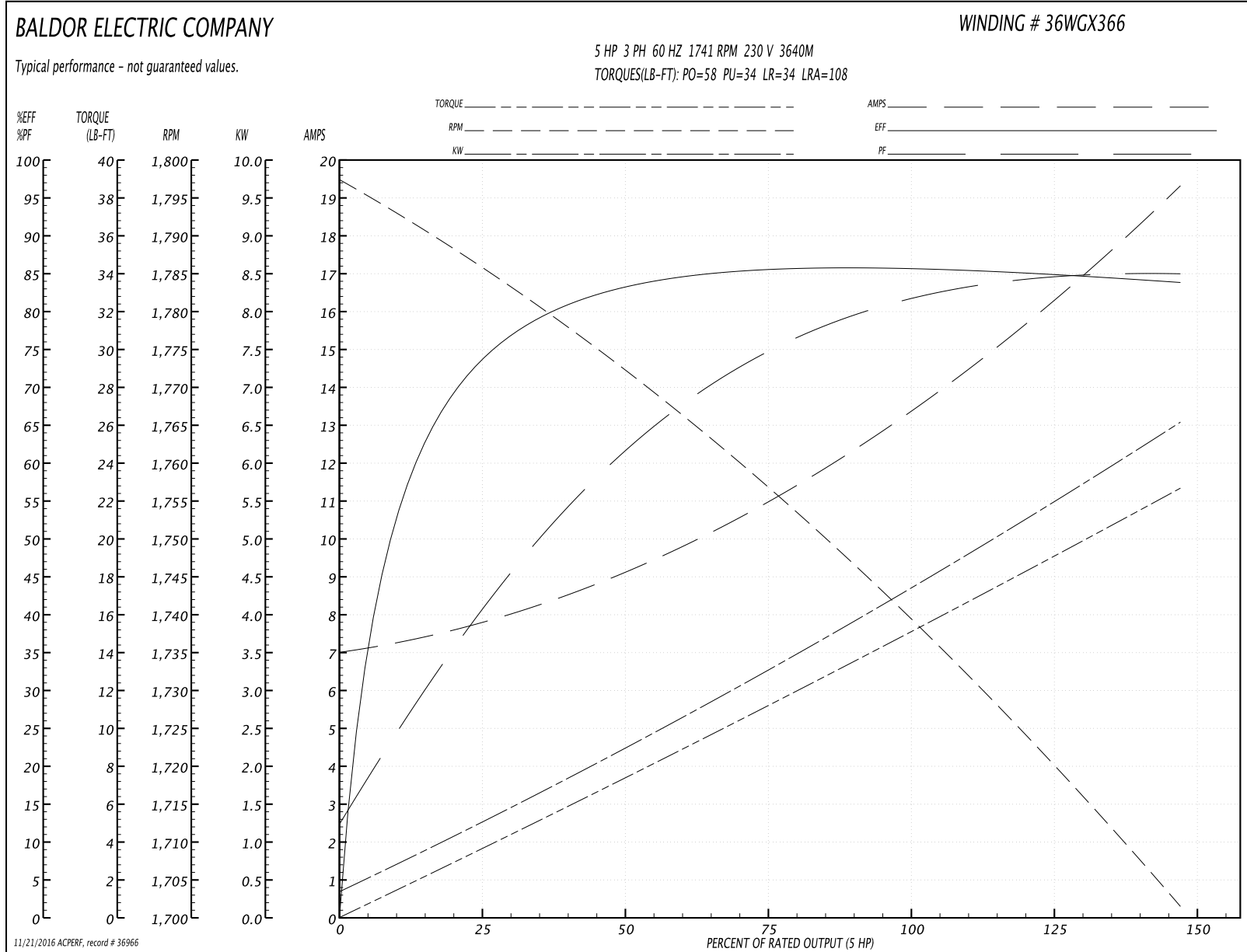
<b>Winding:</b> 36WGX366-R004	<b>Type:</b> 3640M	<b>Enclosure:</b> TEFC
-------------------------------	--------------------	------------------------

Nameplate Data				230 V, 60 Hz: High Speed Connection	
Rated Output (HP)	5/1.3			Full Load Torque	15.1 LB-FT
Volts	208-230			Start Configuration	direct on line
Full Load Amps	13.5/5.2			Breakdown Torque	58 LB-FT
R.P.M.	1725/850			Pull-up Torque	34 LB-FT
Hz	60	Phase	3	Locked-rotor Torque	34 LB-FT
NEMA Design Code	B	KVA Code	K	Starting Current	108 A
Service Factor (S.F.)	1.15			No-load Current	7.1 A
NEMA Nom. Eff.	0	Power Factor	0	Line-line Res. @ 25°C	0.936 Ω
Rating - Duty	40C AMB-CONT			Temp. Rise @ Rated Load	96°C
S.F. Amps				Temp. Rise @ S.F. Load	114°C

Load Characteristics 230 V, 60 Hz, 5 HP

% of Rated Load	25	50	75	100	125	150	S.F.
Power Factor	42	63	75	81	85	85	83
Efficiency	74.1	83	85.3	86	85.1	83.7	85.5
Speed	1785	1771	1756	1741	1721	1701	1729
Line amperes	7.7	9.1	11.1	13.5	16.1	19.3	15.1

Performance Graph at 230V, 60Hz, 5.0HP Typical performance - Not guaranteed values



**AC Induction Motor Performance Data**

Record # 36967 - Typical performance - not guaranteed values

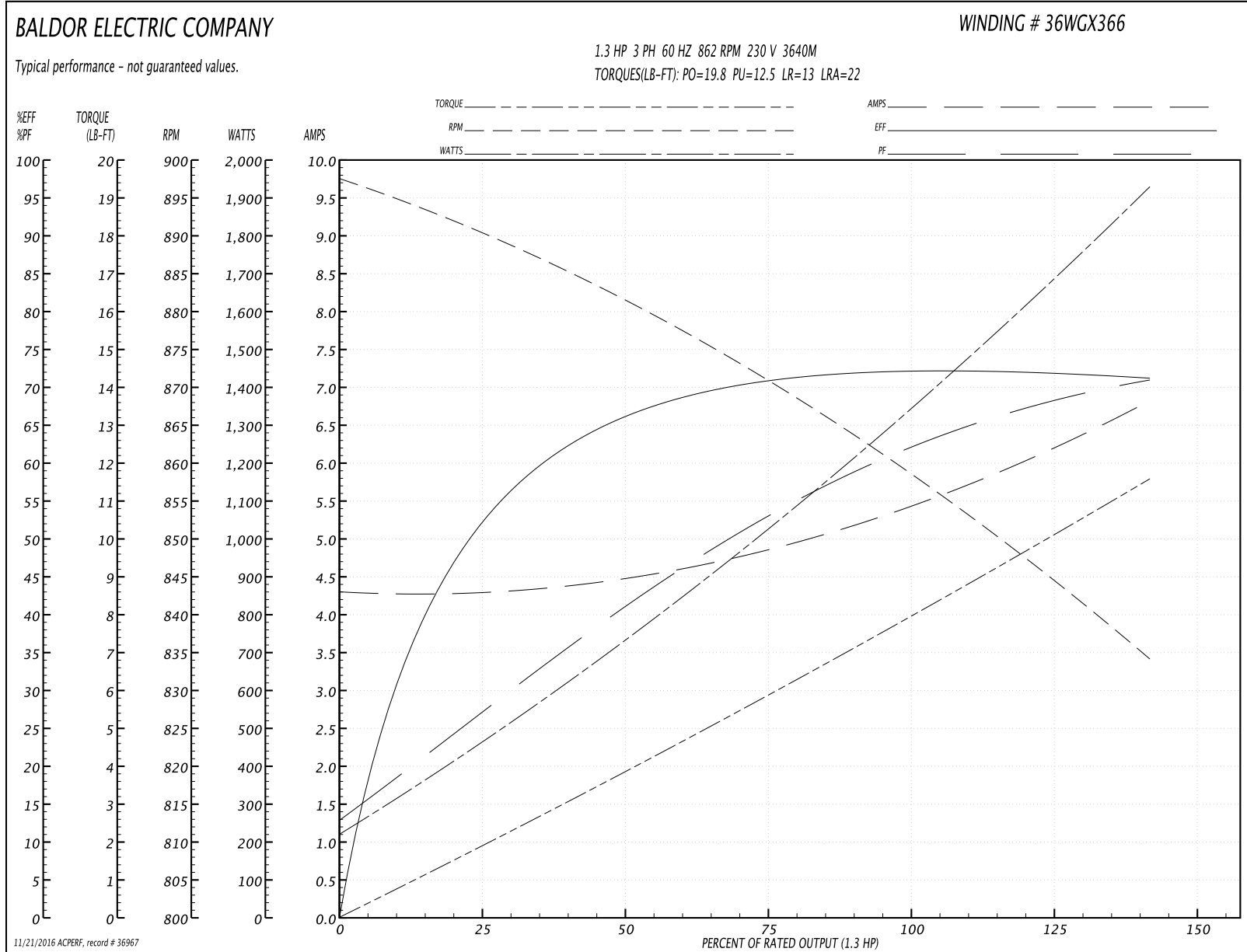
<b>Winding:</b> 36WGX366-R004	<b>Type:</b> 3640M	<b>Enclosure:</b> TEFC
-------------------------------	--------------------	------------------------

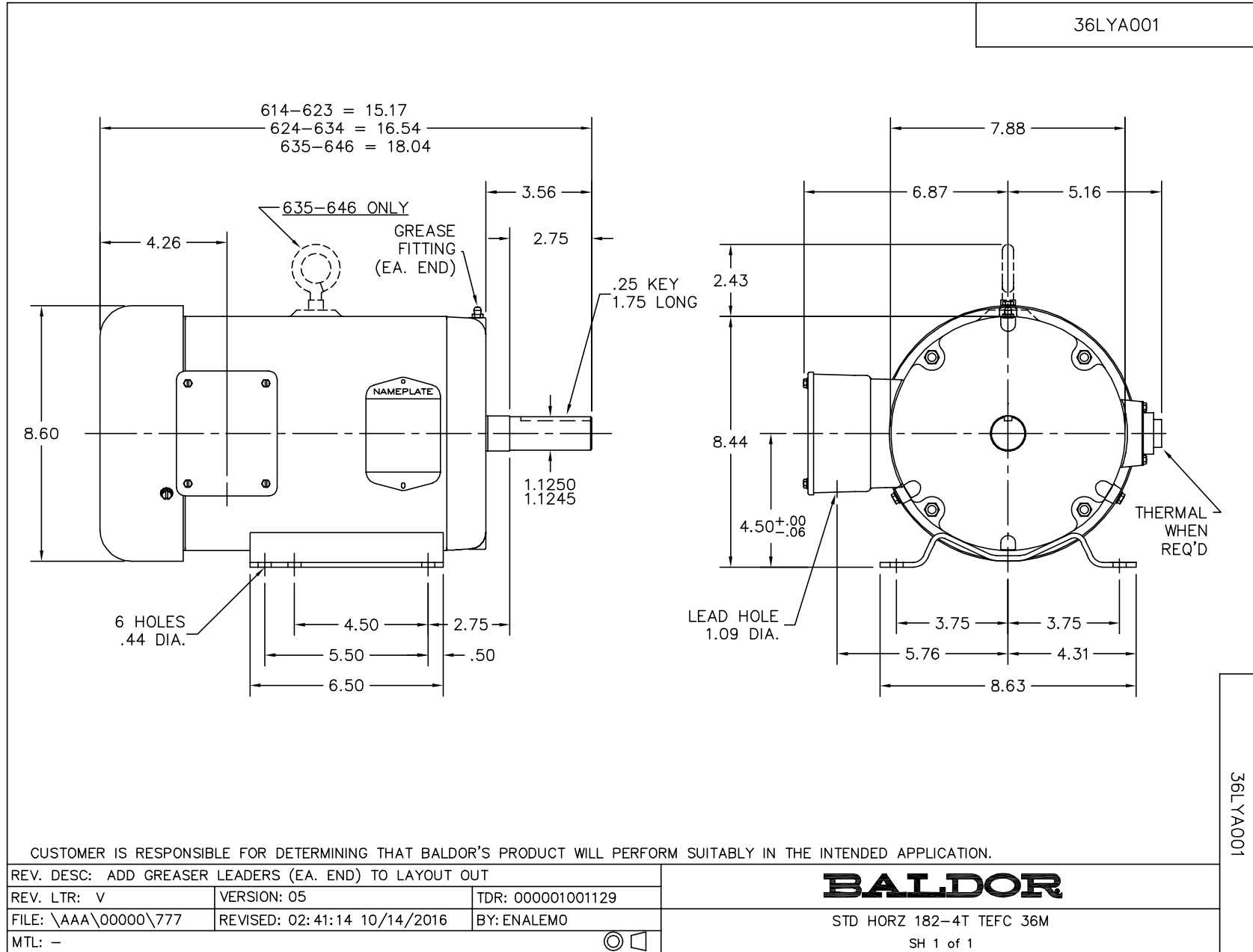
Nameplate Data				230 V, 60 Hz: Low Speed Connection	
Rated Output (HP)	5/1.3			Full Load Torque	7.7 LB-FT
Volts	208-230			Start Configuration	direct on line
Full Load Amps	13.5/5.2			Breakdown Torque	19.8 LB-FT
R.P.M.	1725/850			Pull-up Torque	12.5 LB-FT
Hz	60	Phase	3	Locked-rotor Torque	13 LB-FT
NEMA Design Code	B	KVA Code	K	Starting Current	22 A
Service Factor (S.F.)	1.15			No-load Current	4.2 A
NEMA Nom. Eff.	0	Power Factor	0	Line-line Res. @ 25°C	3.75 Ω
Rating - Duty	40C AMB-CONT			Temp. Rise @ Rated Load	64°C
S.F. Amps				Temp. Rise @ S.F. Load	74°C

Load Characteristics 230 V, 60 Hz, 1.3 HP

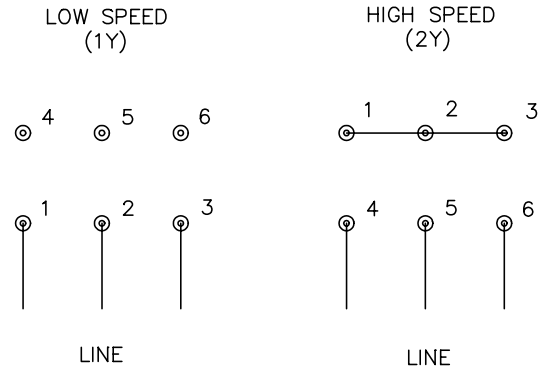
% of Rated Load	25	50	75	100	125	150	S.F.
Power Factor	27	40	53	63	67	70	65
Efficiency	52.2	65.8	70.8	72.3	72.2	71.1	72.2
Speed	890	881	871	862	847	834	853
Line amperes	4.4	4.6	4.8	5.2	6	6.9	5.68

Performance Graph at 230V, 60Hz, 1.3HP Typical performance - Not guaranteed values





CD0032



NOTES:

1. INTERCHANGE ANY TWO LINE LEADS TO REVERSE ROTATION.
2. OPTIONAL THERMOSTATS ARE PROVIDED WHEN SPECIFIED.
3. ACTUAL NUMBER OF INTERNAL PARALLEL CIRCUITS MAY BE A MULTIPLE OF THOSE SHOWN ABOVE.
4. LEAD COLORS ARE OPTIONAL. LEADS MUST ALWAYS BE NUMBERED AS SHOWN.

REV. DESC: REVISE TO SHOW OPTIONAL COLORS			
REV. LTR: E	BY: JLP	REVISED: 01/22/99 8:27	TDR: 0171435
CD0032		FILE: AAA00005145	MDL: -
		MTL: -	

**BALDOR ELECTRIC Co.**

3PH, SV, 6 LEADS, 2-SPEED 1-WINDING VARIABLE TORQUE

CD0032