

BALDOR® • ***RELIANCE***

Product Information Packet

UCME153

1.5-3HP,3450RPM,3PH,60HZ,145TZ,3524M,TEA

Part Detail							
Revision:	E	Status:	PRD/A	Change #:		Proprietary:	No
Type:	AC	Prod. Type:	3524M	Elec. Spec:	35WGS057	CD Diagram:	CD0005
Enclosure:	TEAO	Mfg Plant:		Mech. Spec:	35E2501	Layout:	35LYE2501
Frame:	145TYZ	Mounting:	F1	Poles:	02	Created Date:	03-05-2014
Base:	RG	Rotation:	R	Insulation:	F	Eff. Date:	07-07-2016
Leads:	9#18					Replaced By:	
Literature:		Elec. Diagram:					

Nameplate NP1279L										
CAT.NO.	UCME153									
SPEC.	35E2501S057G1									
HP	1.5-3									
VOLTS	208-230/460									
AMP	8.5-8.2/4.1									
RPM	3450									
FRAME	145TYZ			HZ	60			PH	3	
SER.F.	1.00			CODE	L		DES	B	CL	F
NEMA-NOM-EFF	80			PF	83					
RATING	40C AMB-CONT									
CC							USABLE AT 208V	8.5		
DE	6206			ODE	6203					
ENCL	TEAO			SN						

Nameplate NP1263L										
CAT.NO.	UCME153									
SPEC.	35E2501S057G1									
HP	1.5-3									
VOLTS	208-230/460									
AMP	8.5-8.2/4.1									
RPM	3450									
FRAME	145TYZ				HZ	60			PH	3
SER.F.	1.00		CODE	L	DES	B		CL	F	
NEMA-NOM-EFF	80		PF	83						
RATING	40C AMB-CONT									
CC					USABLE AT 208V	8.5				
DE	6206			ODE	6203					
ENCL	TEAO		SN							

Parts List		
Part Number	Description	Quantity
SA277856	SA 35E2501S057G1	1.000 EA
RA264404	RA 35E2501S057G1	1.000 EA
HA6021A01SP	ADAPTOR, MACH	1.000 EA
36GS5000	GASKET CONDUIT ADAPTOR	1.000 EA
51XB1016A07	10-16 X 7/16 HXWSSLD SERTYB	2.000 EA
11XW1032G06	10-32 X .38, TAPTITE II, HEX WSHR SLTD U	1.000 EA
35EP3100M69	STD FR EP-TENV-35L OR M--203 BRG	1.000 EA
HW5100A03SP	WAVY WASHER (W1543-017)	1.000 EA
10XN2520A24	1/4-20X 1 1/2 HEX HD X	2.000 EA
HW1001A25	LOCKWASHER 1/4, ZINC PLT .493 OD, .255 I	2.000 EA
35EP3113B06	PU EP ENCL,06 BRG, SEAL, W/O GREASER	1.000 EA
HW4600B50SP	SEAL 1.156 X 1.874 X 0.250 SINGLE LIP DB	1.000 EA
HW4600B36SP	V-RING SLINGER 1.188 X 1.690 X .24 VITON	1.000 EA
XY1032A02	10-32 HEX NUT DIRECTIONAL SERRATION	4.000 EA
HW2501D13	KEY, 3/16 SQ X 1.375	1.000 EA
HA7000A01	KEY RETAINER 7/8" DIA SHAFT	1.000 EA
85XU0407S04	4X1/4 U DRIVE PIN STAINLESS	2.000 EA
MJ5001A27	32220KN GRAY SEALER *MIN BUY 4 QTS=1GAL	0.001 QT
HW3001B01	BRASS CUP WASHER, FOR #8 SCREW	1.000 EA
ML1400DF18	18 AWG,BLANK,GREEN w/YELLOW STRIPE	36.000 IN
WD1000D88	T&B RA873M,TRM.INS RING,#10 STUD,22-18 G	1.000 EA
MG1025C02	WILKOFASST SG, 787.105, TAN	0.017 GA
HA3100A20	THRUBOLT 10-32 X 9.812	4.000 EA
LC0145B01	CONNECTION LABEL	1.000 EA

Parts List (continued)		
Part Number	Description	Quantity
LB1119N	WARNING LABEL	1.000 EA
MN416A01	TAG-INSTAL-MAINT no wire (1200/bx) 11/14	1.000 EA
NP1279L	ALUM FARM DUTY UL CSA CC	1.000 EA
NP1263L	AUX, GP, ALUM, CC, LASER ETCHED	1.000 EA
36PA1000	PKG GRP, PRINT PK1016A06	1.000 EA

Accessories		
Part Number	Description	Multiplier
35-1325	C FACE KIT	A8

AC Induction Motor Performance Data
Record # 8899 - Typical performance - not guaranteed values

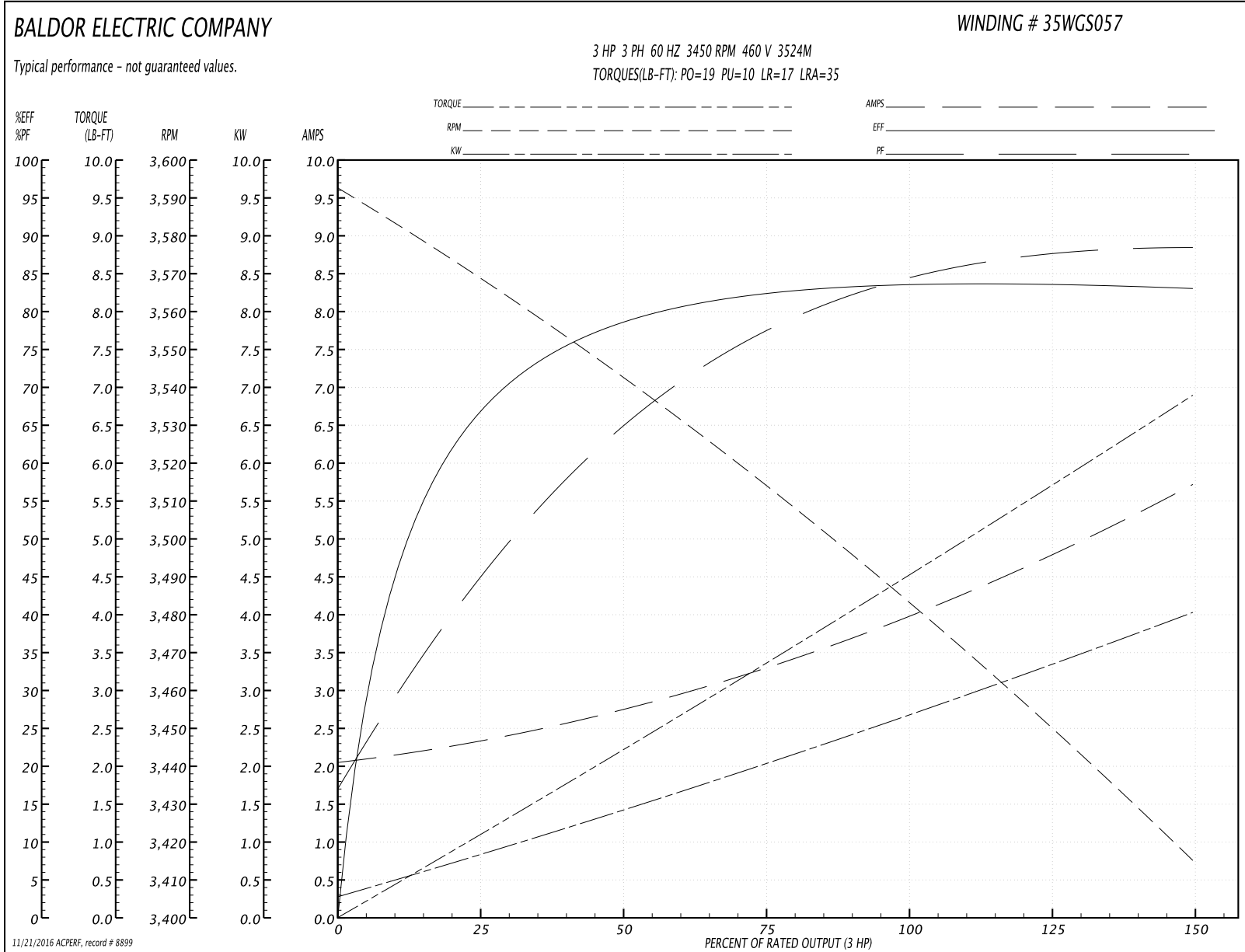
Winding: 35WGS057-R001	Type: 3524M	Enclosure: OPAO
-------------------------------	--------------------	------------------------

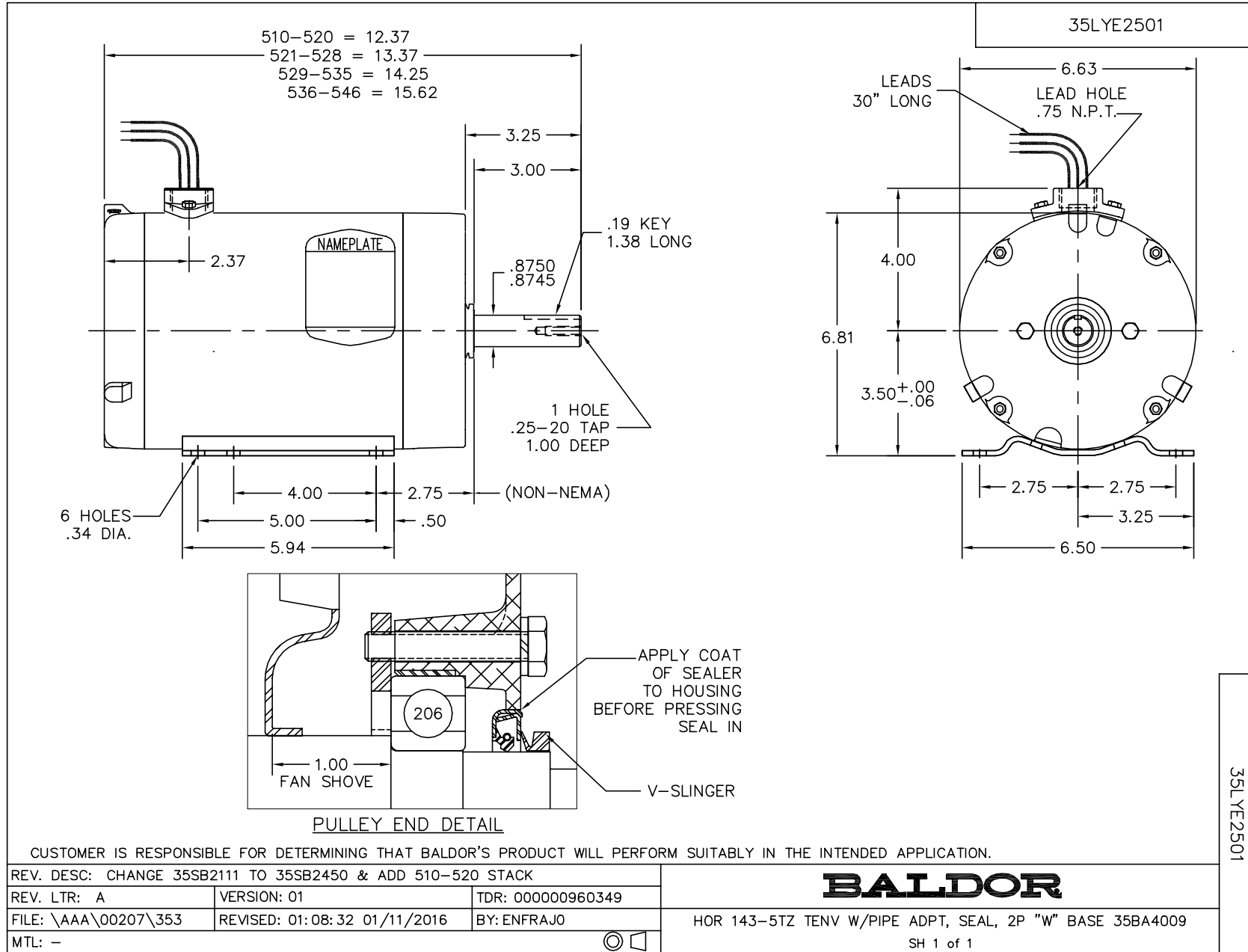
Nameplate Data				460 V, 60 Hz: High Voltage Connection	
Rated Output (HP)	1.5-3			Full Load Torque	4.6 LB-FT
Volts	208-230/460			Start Configuration	direct on line
Full Load Amps	8.5-8.2/4.1			Breakdown Torque	19 LB-FT
R.P.M.	3450			Pull-up Torque	10 LB-FT
Hz	60	Phase	3	Locked-rotor Torque	17 LB-FT
NEMA Design Code	B	KVA Code	L	Starting Current	35 A
Service Factor (S.F.)	1			No-load Current	2.1 A
NEMA Nom. Eff.	80	Power Factor	83	Line-line Res. @ 25°C	4.81 Ω
Rating - Duty	40C AMB-CONT			Temp. Rise @ Rated Load	

Load Characteristics 460 V, 60 Hz, 3 HP

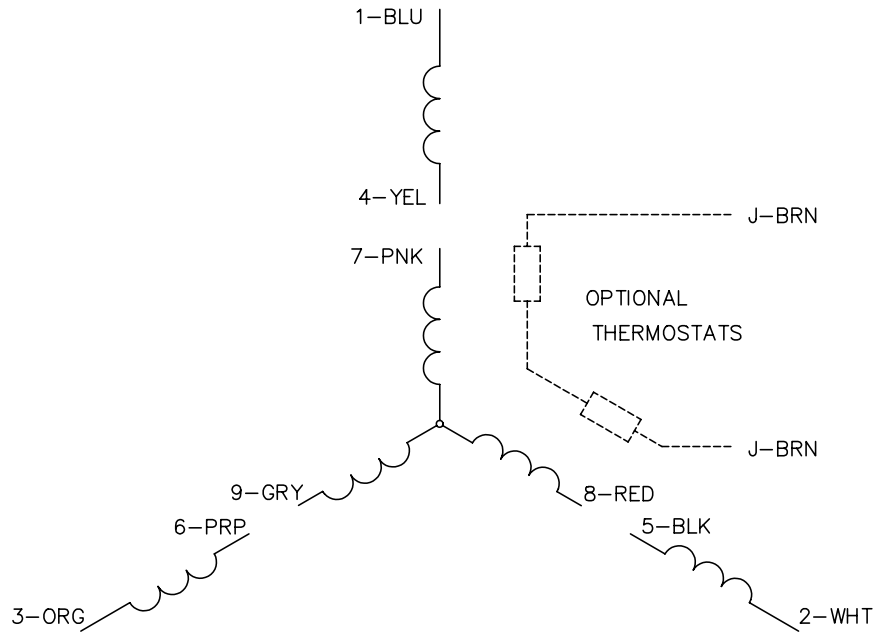
% of Rated Load	25	50	75	100	125	150
Power Factor	46	66	77	83	86	89
Efficiency	66.6	78.6	83	83.8	83.5	83
Speed	3567	3541	3512	3481	3449	3415
Line amperes	2.3	2.7	3.4	4.1	4.8	5.7

Performance Graph at 460V, 60Hz, 3.0HP Typical performance - Not guaranteed values





CD0005

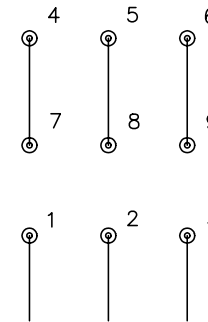


LOW VOLTAGE
(2Y)



LINE

HIGH VOLTAGE
(1Y)



LINE

NOTES:

1. INTERCHANGE ANY TWO LINE LEADS TO REVERSE ROTATION.
2. OPTIONAL THERMOSTATS ARE PROVIDED WHEN SPECIFIED.
3. ACTUAL NUMBER OF INTERNAL PARALLEL CIRCUITS MAY BE A MULTIPLE OF THOSE SHOWN ABOVE.
4. LEAD COLORS ARE OPTIONAL. LEADS MUST ALWAYS BE NUMBERED AS SHOWN.

REV. DESC: REVISE TO SHOW OPTIONAL COLORS			
REV. LTR: E	BY: JLP	REVISED: 01/19/99 10:15	TDR: 0171435
90000		FILE: AAA00005140	MDL: -
		MTL: -	

BALDOR ELECTRIC Co.

3PH, DV, 9 LEADS

CD0005