

# **BALDOR**® • *RELIANCE*

## **Product Information Packet**

# **UCME7510**

**7.5-10 AIR OVERHP,3450RPM,3PH,60HZ,182TZ**

Part Detail							
Revision:	F	Status:	PRD/A	Change #:		Proprietary:	No
Type:	AC	Prod. Type:	3640M	Elec. Spec:	36WGW514	CD Diagram:	CD0005
Enclosure:	TEAO	Mfg Plant:		Mech. Spec:	36Q213	Layout:	36LYQ213
Frame:	184TZ	Mounting:	F1	Poles:	02	Created Date:	03-06-2014
Base:	RG	Rotation:	R	Insulation:	F	Eff. Date:	08-23-2016
Leads:	9#16 SEE NOTES Y					Replaced By:	
Literature:		Elec. Diagram:					

Nameplate NP1279L											
CAT.NO.	UCME7510										
SPEC.	36Q213W514G2										
HP	7.5-10 AIR OVER										
VOLTS	230/460										
AMP	23/11.5										
RPM	3450										
FRAME	184TZ				HZ	60			PH	3	
SER.F.	1.00				CODE	G		DES	B	CL	F
NEMA-NOM-EFF	86.5				PF	94					
RATING	40C AMB-CONT										
CC								USABLE AT 208V	23.5		
DE	6206				ODE	6205					
ENCL	TEAO				SN						

Nameplate NP1263L	
CAT.NO.	UCME7510
SPEC.	36Q213W514G2
HP	7.5-10 AIR OVER
VOLTS	230/460
AMP	23/11.5
RPM	3450
FRAME	184TZ
	HZ 60
	PH 3
SER.F.	1.00
	CODE G
	DES B
	CL F
NEMA-NOM-EFF	86.5
	PF 94
RATING	40C AMB-CONT
CC	USABLE AT 208V 23.5
DE	6206
	ODE 6205
ENCL	TEAO
	SN

Parts List		
Part Number	Description	Quantity
SA277610	SA 36Q213W514G2	1.000 EA
RA264160	RA 36Q213W514G2	1.000 EA
HA6021A01SP	ADAPTOR, MACH	1.000 EA
36GS5000	GASKET CONDUIT ADAPTOR	1.000 EA
51XB1016A07	10-16 X 7/16 HXWSSLD SERTYB	2.000 EA
11XT0832G06	8-32 X 3/8 TY 23 TAPPING	1.000 EA
36EP3104A46	FREP TENV 36L/M 205 BRG NO GRSR, W/GND	1.000 EA
HW5100A05	WVY WSHR F/205 & 304 BRGS	1.000 EA
36PE3100B94	PUEP ASSEMBLY FOR ROUTING PURPOSES	1.000 EA
HW4600B50SP	SEAL 1.156 X 1.874 X 0.250 SINGLE LIP DB	1.000 EA
10XN2520A20	1/4-20X 1 1/4 HEX HD X	2.000 EA
XY2520A12	1/4-20 HEX NUT, DIRECTIONAL SERRATIONS	4.000 EA
HW4600B36SP	V-RING SLINGER 1.188 X 1.690 X .24 VITON	1.000 EA
HW2501E18	KEY, 1/4 SQ X 2.000	1.000 EA
HA7000A02	KEY RETAINER RING, 1 1/8 DIA, 1 3/8 DIA	1.000 EA
85XU0407S04	4X1/4 U DRIVE PIN STAINLESS	2.000 EA
MJ5001A27	32220KN GRAY SEALER *MIN BUY 4 QTS=1GAL	0.010 QT
HW3200A01	3/8-16X3/4 I-BLT WELDED F/S	1.000 EA
MJ1000A02	GREASE, POLYREX EM EXXON (USe 4824-15A)	0.050 LB
MG1025C02	WILKOFASST SG, 787.105, TAN	0.022 GA
LB1115N	LABEL,LIFTING DEVICE (ON ROLLS)	1.000 EA
LD5000A22	LEAD ASSY, ML1400DF14 W/#10 RING TERM	1.000 EA
HA3101A28	THRUBOLT 1/4-20 X 12.500 OHIO ROD	4.000 EA
LB1119N	WARNING LABEL	1.000 EA

<b>Parts List (continued)</b>		
<b>Part Number</b>	<b>Description</b>	<b>Quantity</b>
LC0145B01	CONNECTION LABEL	1.000 EA
NP1279L	ALUM FARM DUTY UL CSA CC	1.000 EA
NP1263L	AUX, GP, ALUM, CC, LASER ETCHED	1.000 EA
36PA1000	PKG GRP, PRINT PK1016A06	1.000 EA
MN416A01	TAG-INSTAL-MAINT no wire (1200/bx) 11/14	1.000 EA

<b>Accessories</b>		
<b>Part Number</b>	<b>Description</b>	<b>Multiplier</b>
36-3301	C FACE KIT	A8
36EP1304A62SP	FLANGE MTD ENDPLATE 182-4TD -ENCL (LESS	A8

**AC Induction Motor Performance Data**

Record # 20860 - Typical performance - not guaranteed values

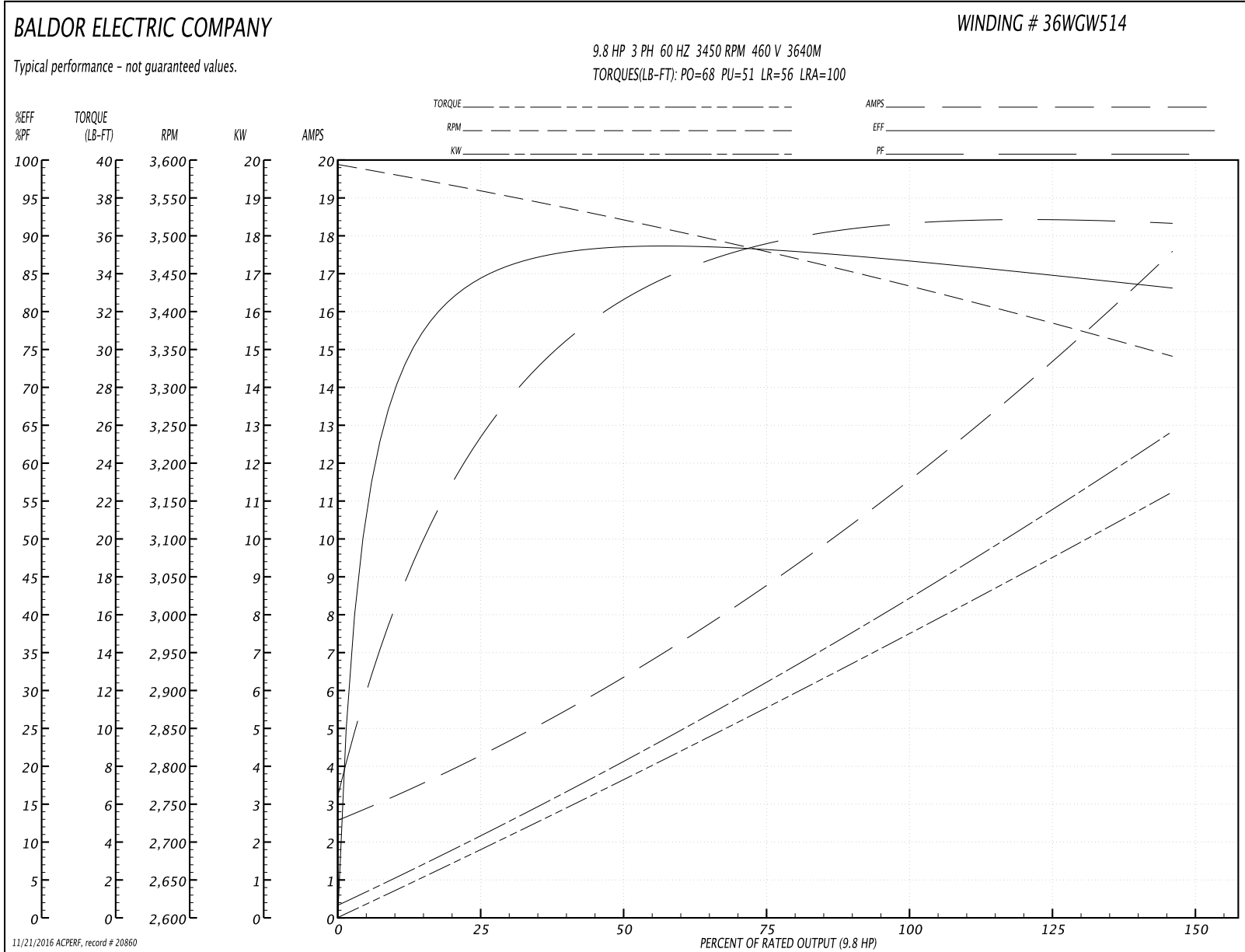
<b>Winding:</b> 36WGW514-R002	<b>Type:</b> 3640M	<b>Enclosure:</b> TEAO
-------------------------------	--------------------	------------------------

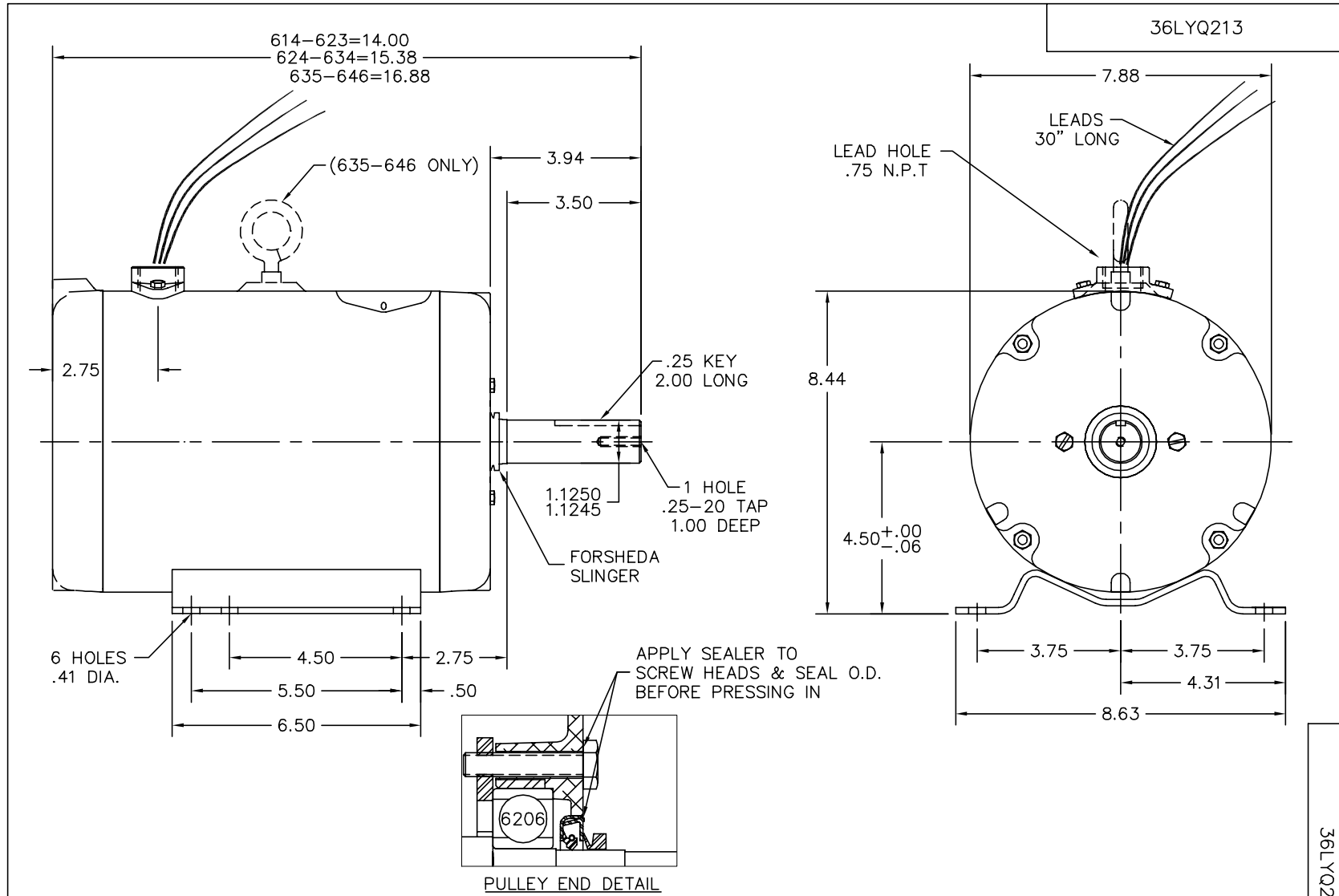
Nameplate Data				460 V, 60 Hz: High Voltage Connection	
Rated Output (HP)	7.5-10 AIR OVER			Full Load Torque	15 LB-FT
Volts	230/460			Start Configuration	direct on line
Full Load Amps	23/11.5			Breakdown Torque	68 LB-FT
R.P.M.	3450			Pull-up Torque	51 LB-FT
Hz	60	Phase	3	Locked-rotor Torque	56 LB-FT
NEMA Design Code	B	KVA Code	G	Starting Current	100 A
Service Factor (S.F.)	1			No-load Current	2.7 A
NEMA Nom. Eff.	86.5	Power Factor	94	Line-line Res. @ 25°C	1.32 Ω
Rating - Duty	40C AMB-CONT			Temp. Rise @ Rated Load	72°C

Load Characteristics 460 V, 60 Hz, 9.8 HP

% of Rated Load	25	50	75	100	125	150
Power Factor	76	89	93	95	95	94
Efficiency	85	88	88	87	85	83
Speed	3557	3518	3478	3434	3389	3340
Line amperes	4.1	6.5	9	11.6	14.4	17.6

Performance Graph at 460V, 60Hz, 9.8HP Typical performance - Not guaranteed values





CUSTOMER IS RESPONSIBLE FOR DETERMINING THAT BALDOR'S PRODUCT WILL PERFORM SUITABLY IN THE INTENDED APPLICATION.

REV. DESC: CHG FREP TO 36EP3104B09		
REV. LTR: B	VERSION: 02	TDR: 000000919753
FILE: \AAA\00207\427	REVISED: 11:15:06 04/24/2015	BY: FGCHAH1
MTL: -		

**BALDOR**

HORZ 182-4TZ TEAO 36M (UNIV CROP DRYER) W/DE SEAL & SLINGER

SH 1 of 1

36LYQ213

CD0005

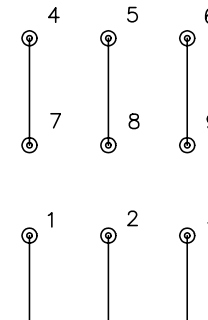


LOW VOLTAGE  
(2Y)



LINE

HIGH VOLTAGE  
(1Y)



LINE

NOTES:

1. INTERCHANGE ANY TWO LINE LEADS TO REVERSE ROTATION.
2. OPTIONAL THERMOSTATS ARE PROVIDED WHEN SPECIFIED.
3. ACTUAL NUMBER OF INTERNAL PARALLEL CIRCUITS MAY BE A MULTIPLE OF THOSE SHOWN ABOVE.
4. LEAD COLORS ARE OPTIONAL. LEADS MUST ALWAYS BE NUMBERED AS SHOWN.

REV. DESC: REVISE TO SHOW OPTIONAL COLORS			
REV. LTR: E	BY: JLP	REVISED: 01/19/99 10:15	TDR: 0171435
900003		FILE: AAA00005140	MDL: -
		MTL: -	

**BALDOR ELECTRIC Co.**

3PH, DV, 9 LEADS

CD0005