

SLIDE RAIL COUPLING SRC-2

To be used with
2" sewage pumps



LOCATION

This SRC-2 is designed for wet wells, tanks, or lift stations where it is necessary to remove a pump from service and reinstall the pump without maintenance personnel entering the pit to unbolt the pump flanges.

O-RINGS

Buna-N, 70 ±5 Duro.

PAINT

Air dry enamel, water based.

FEATURES

- ▶ 2" NPT pump connection
- ▶ 2" NPT vertical discharge
- ▶ 3/4" or 1" stainless steel guide rails (provided by installer)
- ▶ Stress-free rail system
- ▶ Durable cast iron base and lift-out flange
- ▶ Stainless steel pump adapter and guide plate

STATIONARY ELBOW

Cast iron ASTM A-48 class 30

MOVABLE FITTING

Ductile iron ASTM A-536

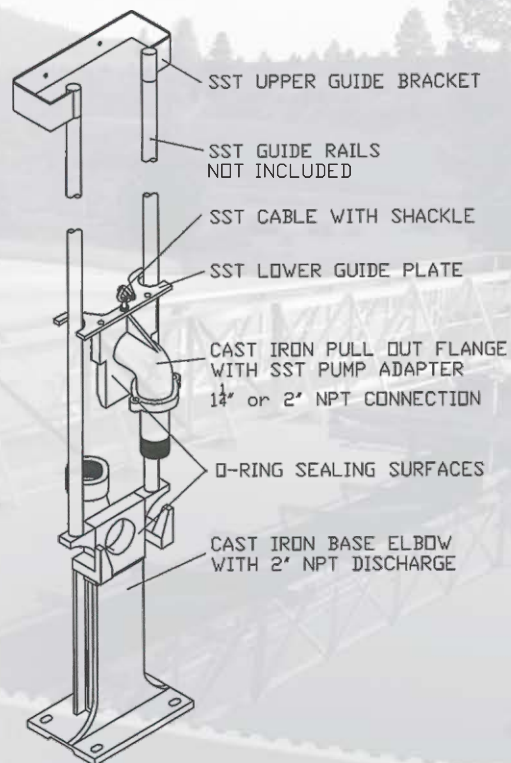
GUIDE RAIL CAP

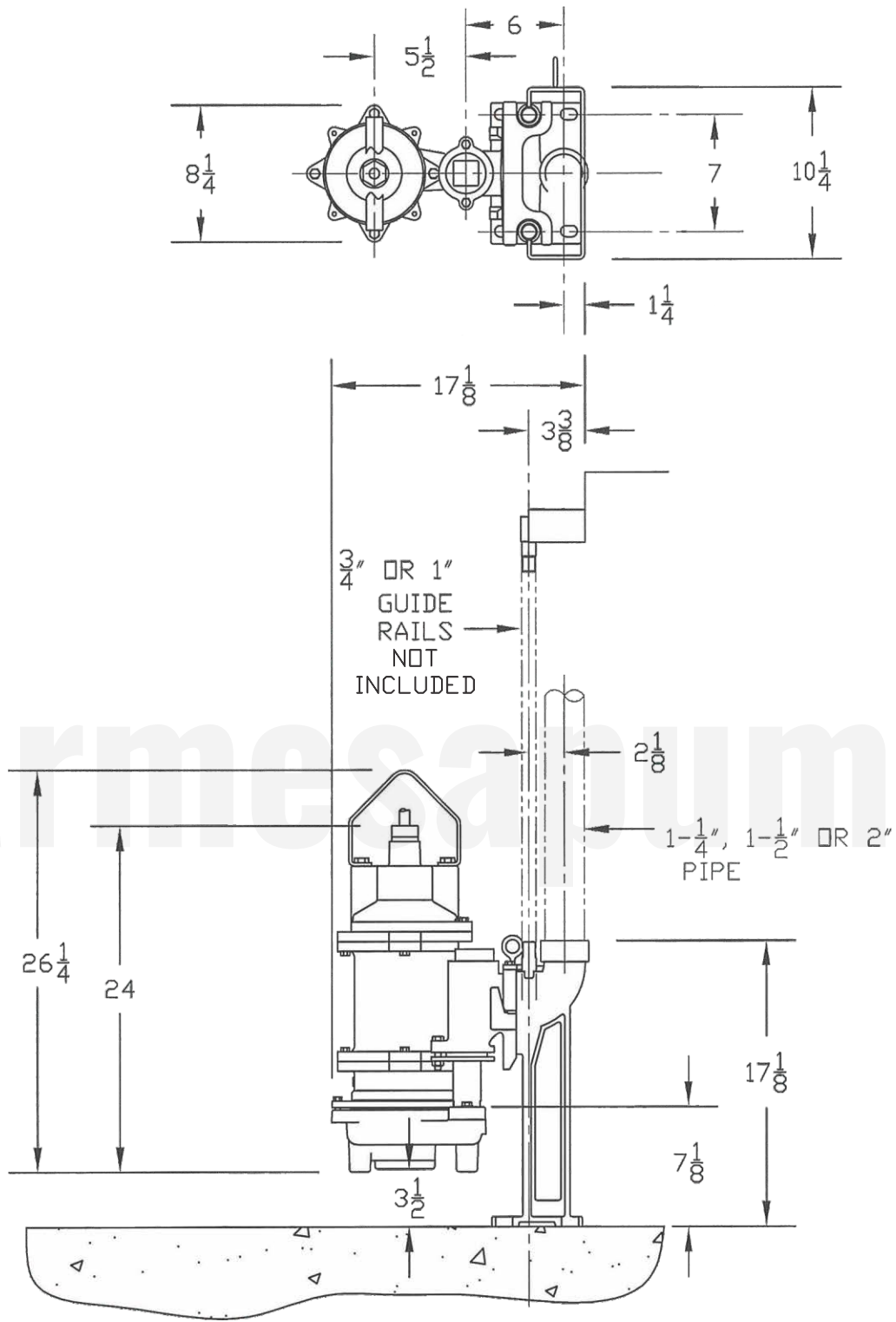
Bracket: 304 stainless steel

Plugs: ductile iron ASTM A-536-84

HARDWARE

304 series stainless steel





MODEL	PART No.	SIZE	RAILS	COUPLING	WEIGHT (pounds)
SRC200	62170805	2"	3/4" or 1"	w/ upper guide bracket	47