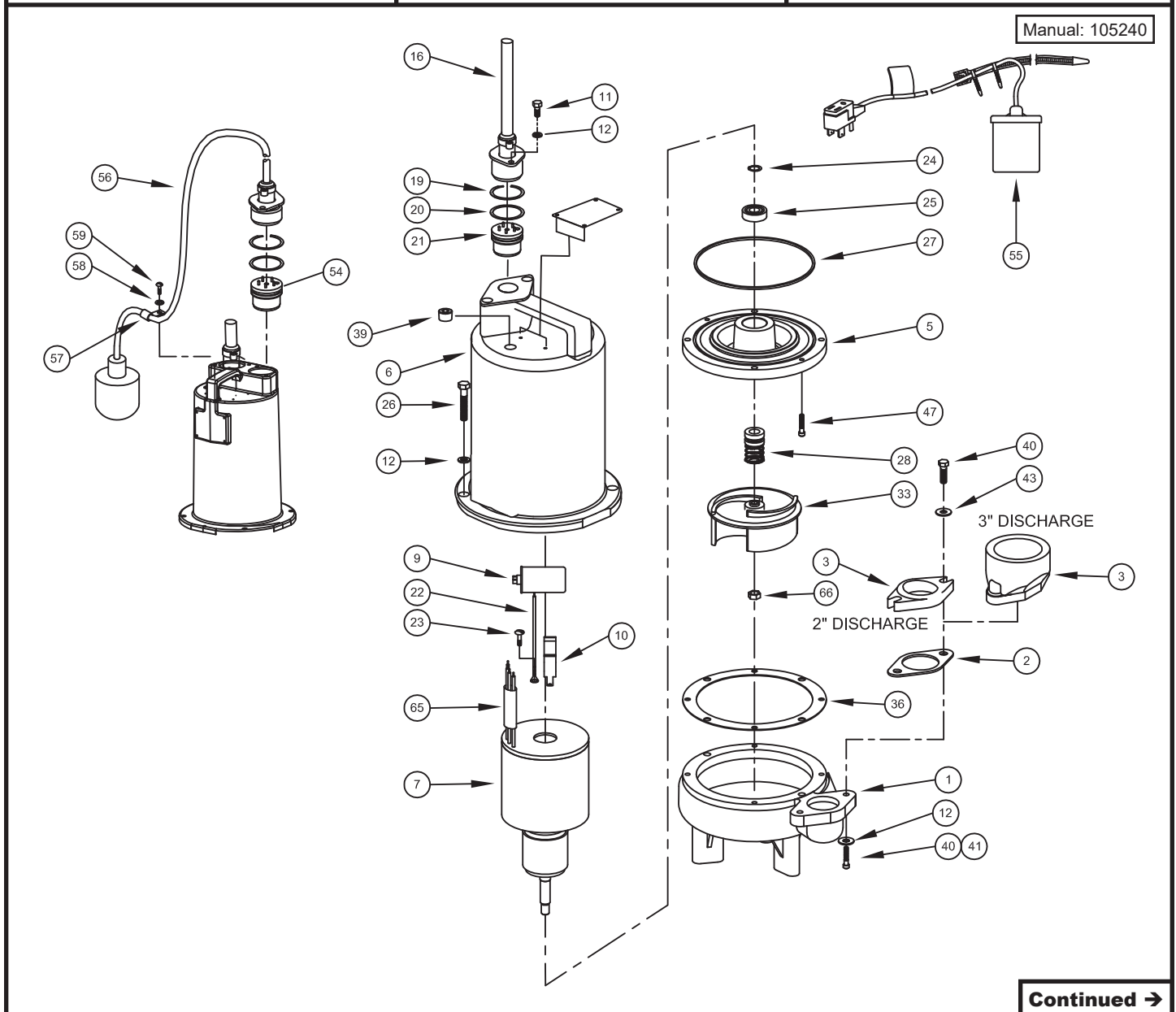


MODEL	PART NO.	MODEL	PART NO.	MODEL	PART NO.
SE:		SE754L	104887	3SE774L	104902
SE51	104871	SE1074L	104888	3SE794L	104903
SE51A	104872	SE1094L	104889	3SE744L	104904
SE51AU	104873	SE1044L	104890	3SE754L	104905
SE52	104874	SE1054L	104891	3SE1074L	104910
SE52AU	104875			3SE1094L	104911
SE594L	104881	3SE-L:		3SE1044L	104912
SE544L	104882	3SE514L	104892	3SE1054L	104913
SE554L	104883	3SE524L	104893		
SE774L	104884	3SE594L	104894		
SE794L	104885	3SE544L	104895		
SE744L	104886	3SE554L	104896		



Series: SE-HT (High-Temperature)

Submersible Sewage Ejectors
0.5HP, 1750RPM

BARNES®

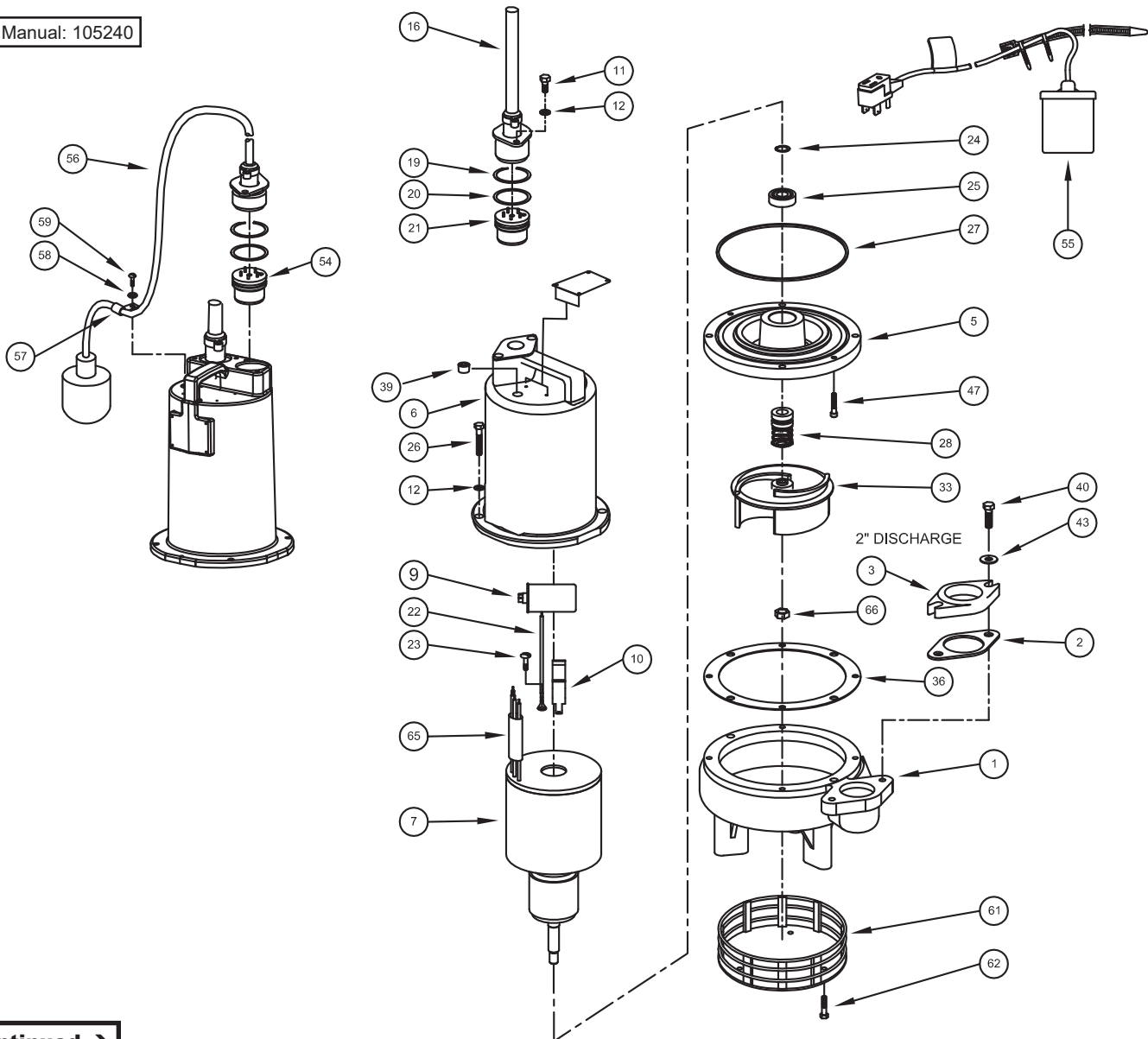
www.cranepumps.com

BARNES • PROSSER • CROWN SERVICE PARTS

MODEL	PART NO.
SE51HT	104876
SE51HTA	104877
SE51HTAU	104878
SE52HT	104879
SE52HTAU	104880

Order Online: www.PumpCatalog.com

Manual: 105240



Continued →

SECTION 1B
PAGE 66
DATE 12/16

CRANE
A Crane Co. Company

PUMPS & SYSTEMS

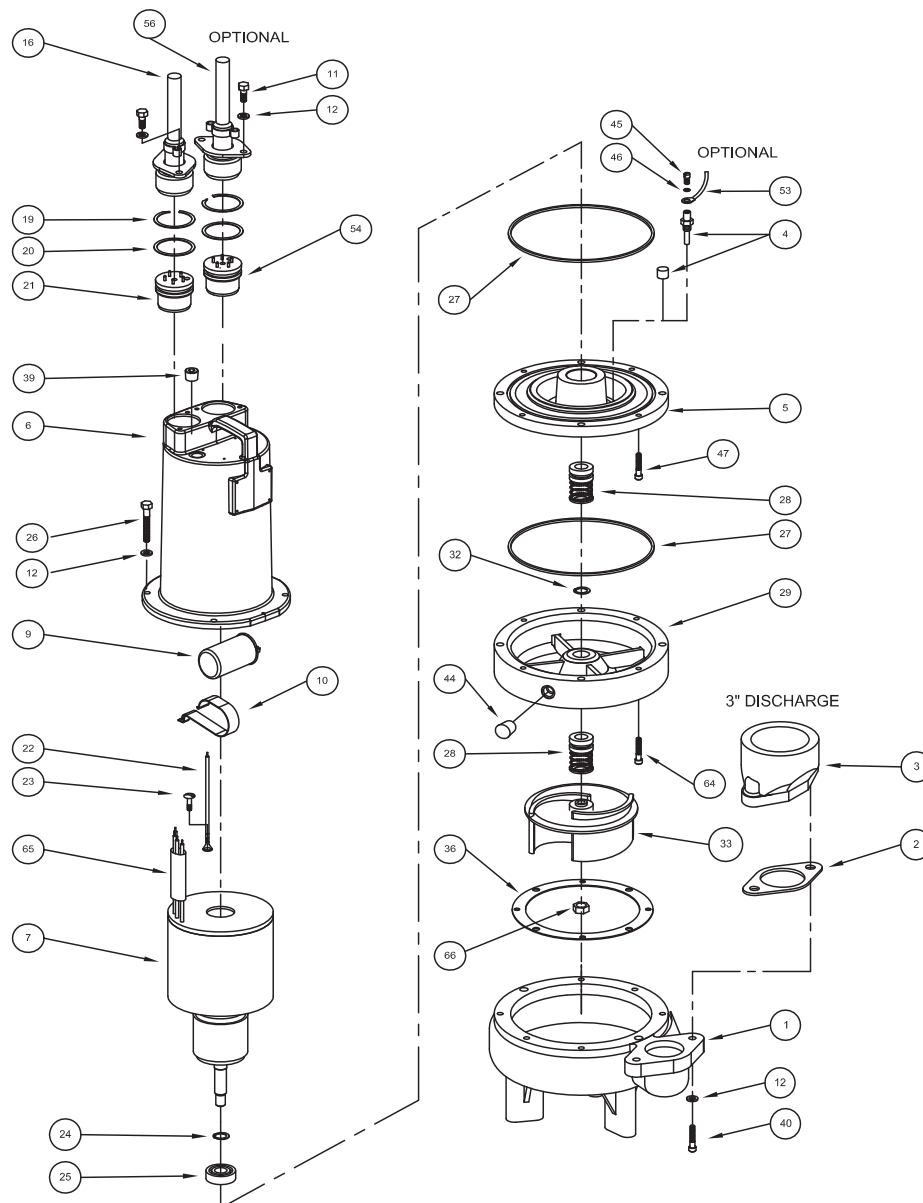
USA: (937) 778-8947 • Canada: (905) 457-6223 • International: (937) 615-3598

BARNES • PROSSER • CROWN SERVICE PARTS

MODEL	PART NO.	MODEL	PART NO.
3SE514DS	104897	3SE1074DS	104914
3SE524DS	104898	3SE1094DS	104915
3SE594DS	104899	3SE1044DS	104916
3SE544DS	104900	3SE1054DS	104917
3SE554DS	104901		
3SE774DS	104906		
3SE794DS	104907		
3SE744DS	104908		
3SE754DS	104909		

Order Online: www.PumpCatalog.com

Manual: 105240



Continued →

BARNES • PROSSER • CROWN SERVICE PARTS

PARTS KITS

Seal Repair Kits:

Single SealP/N - 130180 (+) 2, 20, 27, 28, 36

Double SealP/N - 130176 (†) 2, 20, 27, 28, 32, 36

Service Kits:

Single Seal.....P/N - 130207 (◇) 2, 19, 20, 22, 24, 25, 27, 28, 36, 49, 65, 66

Double SealP/N - 130172 (◆) 2, 19, 20, 22, 24, 25, 27, 28, 32, 36, 44, 49, 65, 66

Seal Tool KitP/N - 107271

Pressure Gauge KitP/N - 085343

PARTS LIST

ITEM	QTY.	PART NO.	DESCRIPTION
1	1	055400	Volute (Std)
	1	071114	Volute (For use with Optional Strainer)
2	1	069140	+†◇ Gasket
3	1	026210	Flange 2" Discharge
		105153	3" Discharge
4	2	003217	Pipe Plug All double seal (Std), .25" NPT, ZP
	2	039383	Moisture Sensor Probes (Optional) moisture sensor
5	1	084532	Seal Plate All single seal
		084906	All double seal
6	1	108342A	Motor Housing (Std)
		110328B	(Optional) for all AU and HTAU, moisture and temp. sensors
7	1	Motor:	Capacitor (item 9):
		030369BS	034964 SE51, SE51A, SE51AU, 3SE514L
		030369BD	070963 3SE514DS
		030370BS	070963 SE52, SE52AU, 3SE524L
		030370BD	070963 3SE524DS
		085472BS	None SE51HT, SE51HTA, SE51HTAU, SE52HT, SE52HTAU
		071352BS	None SE594L, 3SE594L, SE544L, 3SE544L
		071352BD	None 3SE594DS, 3SE544DS
		092854BS	None SE554L, 3SE554L
		092854BD	None 3SE554DS
		029792BS	070963 SE774L, 3SE774L, SE1074L, 3SE1074L
		029792BD	070963 3SE774DS, 3SE1074DS
		071354BS	None SE794L, SE744L, 3SE794L, 3SE744L, SE1094L,
			None SE1044L, 3SE1094L, 3SE1044L
		071354BD	None 3SE794DS, 3SE744DS, 3SE1094DS, 3SE1044DS
		092855BS	None SE754L, 3SE754L, SE1054L, 3SE1054L
		092855BD	None 3SE754DS, 3SE1054DS
8	96 oz	029034	Oil All single seal
	120oz	029034	Oil All double seal (Includes 24 oz. in Seal Chamber)
9	1	034964	* Capacitor (30MFD) 1 Phase
	1	070963	Capacitor (20 MFD) 1 Phase
10	1	039858	Capacitor Bracket 1 Phase
11	2	1-156-1	Hex. Hd. Cap Screw (Std), 5/16-18 x 1.00" Lg., Stainless
	6	1-156-1	Hex. Hd. Cap Screw (Optional) for all AU and HTAU, moisture and temp. sensors
12	8	026322	Lockwasher (Std), 5/16, Stainless
	12	026322	Lockwasher (Optional) for all AU and HTAU, moisture and temp. sensors

* Units with build code date (see section G-4) before -0901 may use capacitor part number, 070963 or the 034964 part number.

Continued →

BARNES • PROSSER • CROWN SERVICE PARTS

ITEM	QTY.	PART NO.	DESCRIPTION
16	1	See Table 2	Power Cable Set
16a	1	103582	Compression Flange, Included with Cable Set
19	1	105197	◇ Snap Ring (Std)
	2	105197	◆ Snap Ring (Optional) for all AU and HTAU, moisture and temp. sensors
20	1	2-31051-224	+◇ O-ring (Std)
	2	2-31051-224	†◆ O-ring (Optional) for all AU and HTAU, moisture and temp. sensors
21	1	103584	Terminal Block 1 Phase
		103583	3 Phase
22	1	105111	◇◆ Ground Wire Assembly (Std)
	2	105111	Ground Wire Assembly (Optional) for moisture and temp. sensors
23	1	016660	Screw, Self Tapping #8-32 x .375" Lg.
24	1	085326	◇◆ Retaining Ring Included with Motor
25	1	017414	◇◆ Bearing
26	4	1-135-1	Cap Screw All single seal, 5/16-18 x 1.75" Lg., Stainless
		1-168-1	Cap Screw All double seal, 5/16-18 x 3.50" Lg. Stainless
27	1	027269	+†◇ Square Ring All single seal
	2	027269	◆ Square Ring All double seal
28	1		+†◇◆ Shaft Seal - (Qty 2 for DS)
		005080	Carbon/Ceramic/Buna-N (STD)
		005080SB	Tungsten/Tungsten/Buna-N
		005080SD	Silicon Carbide/Silicon Carbide/Buna-N
		005080SF	Carbon/Ceramic/Viton
		005080SH	Tungsten/Tungsten/Viton
		005080SK	Silicon Carbide/Silicon Carbide/Viton
		005080SM	Silicon Carbide/Tungsten/Buna-N
		005080SN	Carbon/Ni-Resistant/Buna-N
		005080SP	Carbon/Ni-Resistant/Neoprene
		082850	Carbon/Ni-Resistant/Viton
29	1	103587	Seal Housing All double seal
32	1	2-27008-62	†◆ Retaining Ring All double seal
33	1		Impeller, Cast Iron
		084346	6.00 Dia. (STD for 1 HP)
		084346TA	5.88 Dia.
		084346TB	5.75 Dia.
		084346TC	5.63 Dia. (STD for .75 HP)
		084346TD	5.50 Dia.
		084346TE	5.38 Dia.
		084346TF	5.25 Dia. (STD for .5 HP)
		084346TG	5.13 Dia.
		084346TH	5.00 Dia.
		084346TJ	4.88 Dia.
		084346TK	4.75 Dia.
		084346TL	4.63 Dia.
		084346TM	4.50 Dia.
		084346TN	4.38 Dia.
		084346TP	4.25 Dia.
		084346TQ	4.13 Dia.
		084346TR	4.00 Dia.
36	1	027344	+†◇◆ Gasket
39	1	014270	Pipe Plug .375" NPT
40	2	1-36-1	Hex. Hd. Cap Screw 2" Discharge, 3/8-16 x 1.25" Lg., Stainless
		2-23030-59	Hex. Hd. Cap Screw 3" Discharge, 5/16-18 x 1.50" Lg., Stainless

Continued →

BARNES • PROSSER • CROWN SERVICE PARTS

ITEM	QTY.	PART NO.	DESCRIPTION
41	A/R	----	Loctite 242
42	A/R	----	Permatex 2C
43	2	082727	Washer 2" Discharge, 3/8" Stainless
44	1	003217	◆ Pipe Plug All double seal, .25" NPT
45	2	5-32-6	Screw (Optional) moisture sensor, #6-32 x .25" Lg., ZP
46	2	052563	Lockwasher (Optional) moisture sensor, #6 Stl.
47	2	084948	Socket Head Cap Screw 1/4-20 x 1.25" Lg., Stainless
48	3	See BOM	Terminal Connector HT Only
	4	See BOM	Terminal Connector 200-240V, 3Ph
	3	See BOM	Terminal Connector 480V, 3Ph
49	1	105149	Wire Assembly 120V HT
	3	105149	◆◆ Wire Assembly 200-240V, 3Ph
50	1	051621	Thermal Sensor Optional for temperature sensor (Not Shown)
51	2	105155	Wire Assembly Optional for temperature sensor (Not Shown)
52	2	134013	Terminal Connector Optional for temperature sensor (Not Shown)
53	2	105106	Wire Assembly Optional for moisture sensor
54	1	103759	Terminal Block All AU and HTAU
		103584	Optional for temperature sensor only
		113272	Optional for moisture and temp. sensors
55	1	See Table 2	Float Switch w/Plug Piggyback
56	1	103746	Float Switch SE51AU, SE52AU
	1	103755	Float Switch, High Temp. SE51HTAU, SE52HTAU
	1	See Table 2	Control Cable Optional for moisture and/or temp. sensors
56a	1	103582	Compression Flange Included with Cable Set
57	1	090516	Cord Clip, (For SE51AU, SE52AU, SE51HTAU & SE52HTAU)
58	1	20-12-1	Washer, (For SE51AU, SE52AU, SE51HTAU & SE52HTAU)
59	1	2-88-1	Screw, (For SE51AU, SE52AU, SE51HTAU & SE52HTAU)
60	A/R	----	Loctite 603
61	1	082852	Inlet Strainer, Stainless (Optional)
62	3	028913	Hex Hd, Screw, Stainless (Optional), 3/8-16 x .875" Lg., Stainless
63	1	105147	Wire Assembly All AU Series
64	2	030337	Socket Head Cap Screw Double seal Only, 1/4-20 x 2.00" Lg., Stainless
65	1	625-02117	◆◆ Sleeve, Fiberglass
66	1	030068	◆◆ Jam Nut 1/2 - 20, S.S.
69	1	111909	Jumper Wire

TABLE 2 - POWER & SENSOR CORD SETS

CABLE LENGTH	ITEM #16 120 VOLT 1 PHASE STD. Temp (plug included)	ITEM #16 120 VOLT 1 PHASE High Temp (plug included)	ITEM #16 240 VOLT 1 PHASE 0.5HP STD & HT (plug included)	ITEM #16 240 VOLT 1 PHASE 0.75 & 1HP STD & HT (no plug)	ITEM #16 3 PHASE (no plug)	ITEM #55 (OPTIONAL) STD. Temp Piggy-Back Float Switch "A" Series	ITEM #55 (OPTIONAL) High Temp. Piggy-Back Float Switch "A" Series	ITEM #56 (OPTIONAL) Temperature 3 Phase	ITEM #56 (OPTIONAL) Moisture and Temperature Sensor 3 Phase or Moisture Sensor Only
8 FT	103756A	110416A	----	103741A	103742A	---	---	103741A	113288A
15 FT	103756	110416	110949	103741	103742	125151-15	090269	103741	113288
20 FT	103756XA	110416XA	110949XA	103741XA	103742XA	125151-20	090269XA	103741XA	113288XA
30 FT	103756XC	110416XC	110949XC	103741XC	103742XC	125151-30	090269XC	103741XC	113288XC
50 FT	103756XF	110416XF	110949XF	103741XF	103742XF	125151-50	090269XF	103741XF	113288XF
75 FT	103756XJ	110416XJ	110949XJ	103741XJ	103742XJ		090269XJ	103741XJ	113288XJ
100 FT	103756XL	110416XL	110949XL	103741XL	103742XL		090269XL	103741XL	113288XL

End

Order Online: www.PumpCatalog.com

SECTION 1B
PAGE 70
DATE 12/19



PUMPS & SYSTEMS

A Crane Co. Company

USA: (937) 778-8947 • Canada: (905) 457-6223 • International: (937) 615-3598