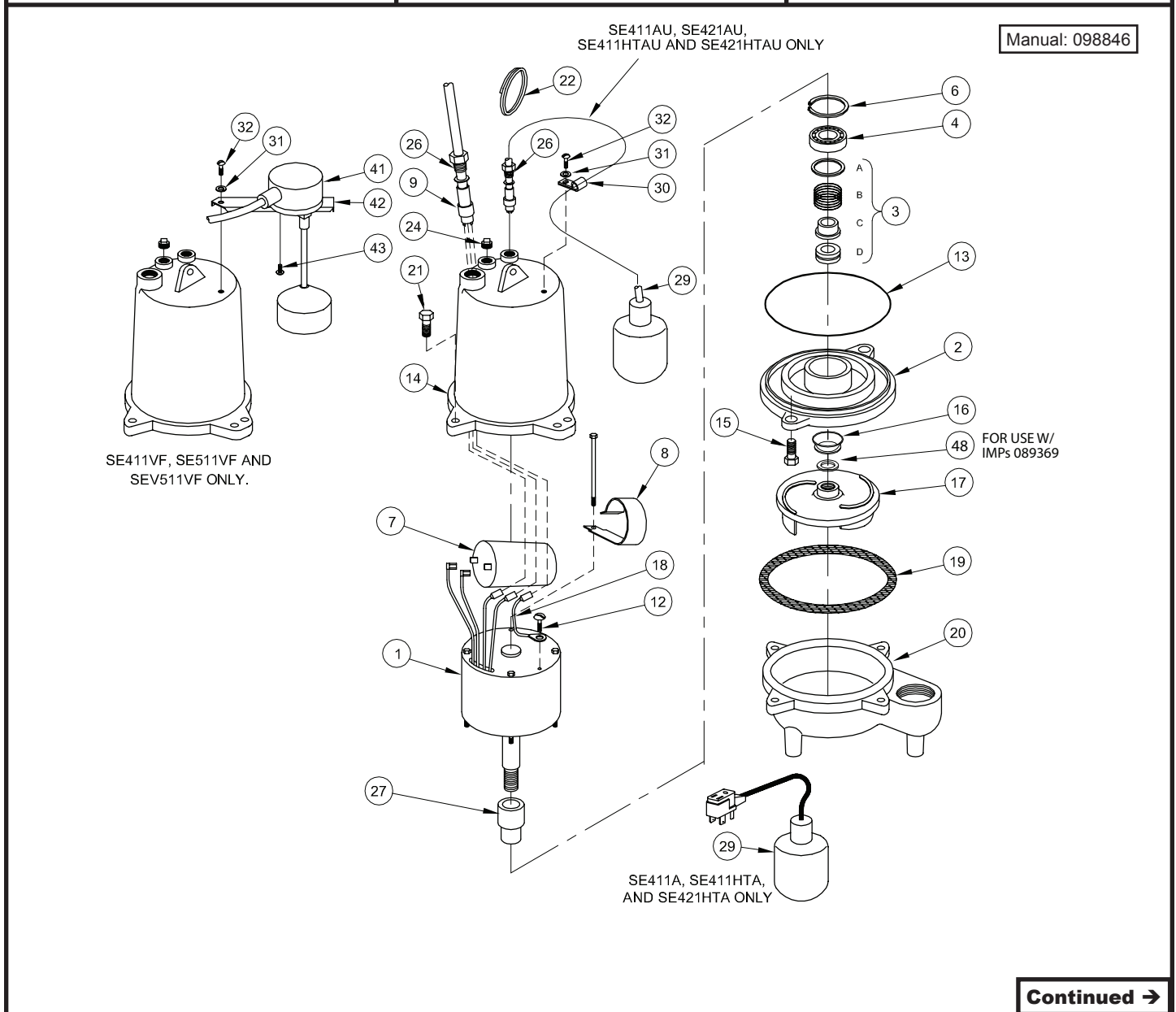


**BARNES • PROSSER • CROWN SERVICE PARTS**

MODEL	PART NO.	MODEL	PART NO.
<b>Standard:</b>		<b>High Temperature:</b>	
SE411	096747	SE411HT	096764
SE411A	096748	SE411HTA	096765
SE411AU	096749	SE411HTAU	096766 - Discontinued
SE411VF	100836	SE421HT	096767
SE421	096750	SE421HTAU	096768 - Discontinued
SE421AU	096751 - Discontinued		



**Questions? Call 1-800-810-1053**



**Continued →**

# Series: SE & SEV

Submersible Sewage Ejectors  
0.5HP, 1750RPM

# BARNES®

www.cranepumps.com

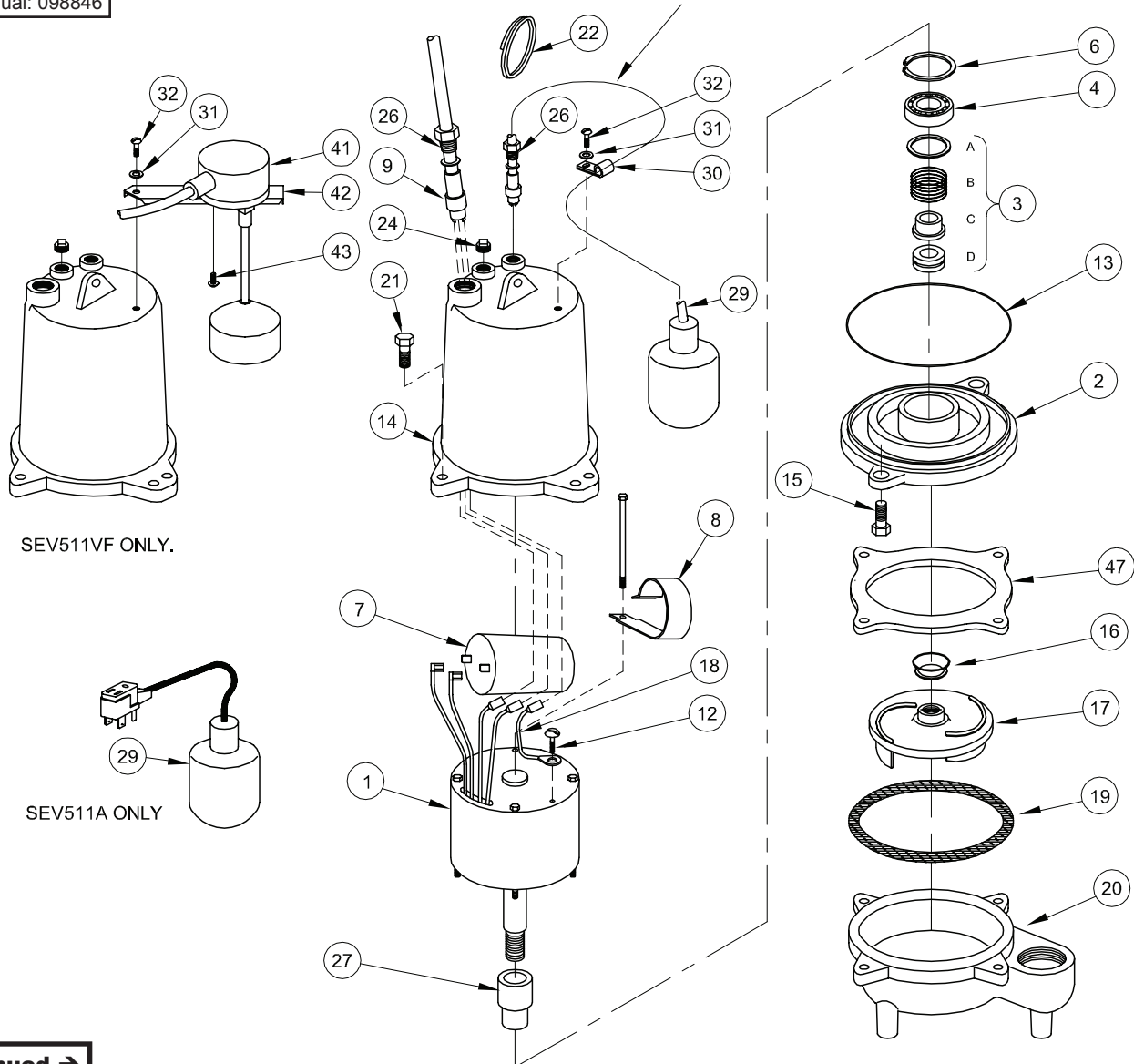
## BARNES • PROSSER • CROWN SERVICE PARTS

MODEL	PART NO.	MODEL	PART NO.
SE511	096752	SEV511	096757
SE511A	096753	SEV511A	096758
SE511AU	096754	SEV511AU	096759
SE511VF	100837	SEV511VF	100838
SE521	096755	SEV521	096760
SE521AU	096756	SEV521AU	096761

Order Online: [www.PumpCatalog.com](http://www.PumpCatalog.com)

Manual: 098846

SE511AU, SEV521AU ONLY



Continued →

SECTION 1B  
PAGE 52  
DATE 6/06

**CRANE**  
A Crane Co. Company

PUMPS & SYSTEMS

USA: (937) 778-8947 • Canada: (905) 457-6223 • International: (937) 615-3598

### BARNES • PROSSER • CROWN SERVICE PARTS

#### PARTS KITS

**Overhaul Kit..... P/N: 085201** (†) 3,4,6,13,16,19,24

**Seal Kit..... P/N: 085202** (◇) 3,13,16,19

**PRESSURE GAUGE KIT.. P/N: 085343**

#### PARTS LIST

ITEM	QTY	PART No.	DESCRIPTION	
1	1	See TABLE 2	Motor & Sleeve	
2	1	093063	Seal Plate	Cast Iron
3	1	068988	◇† Shaft Seal, (Standard)	Carbon/Ceramic/Buna-N
		068988SB	Tungsten/Tungsten/Buna-N	
		068988SD	Silicon/Silicon/Buna-N	
		068988SF	Carbon/Ceramic/Viton	
		068988SH	Tungsten/Tungsten/Viton	
		068988SK	Silicon/Silicon/Viton	
		068988SM	Silicon/Tungsten/Buna-N	
		068988SN	Carbon/Ni-Resist/Buna-N	
4	1	017414	† Bearing	
6	1	017415	† Retaining Ring	
7	1	035864	‡ Capacitor, SE411	370V 35MFD
		070965	Capacitor, SE421 & Hi-Temp	370V 25MFD
		070965	Capacitor, SE511-521, SEV511-521,	370V 25MFD
8	1	039858	Capacitor Bracket	
----STANDARD TEMPERATURE----				
9	1	See TABLE 3	Power Cable Assembly	
9a	1	051448	* Gland Nut	1-16 Stainless
9b	2	051449	* Friction Ring	
----HIGH TEMPERATURE----				
9	1	See TABLE 3	Power Cable Assembly	
9a	1	051448	* Gland Nut	1-16 Stainless
9b	2	051449	* Friction Ring	
9c	1	051451	* Grommet	
10	1	099290	Jumper Wire Assy. "AU" Series	
12	1	016660	Self Tapping Screw	8-32 x 3/8 lg Stainless
13	1	019289	◇† O-Ring	
14	1	See TABLE 2	Motor Housing	
15	2	084948	Socket Hd. Cap Screw	1/4-20 x 1.25" Stainless
16	1	068053	◇† Exclusion Seal	
17	1	112561	Impeller, SE411-421	5.44" Dia., Cast Iron**
		089369TG	Impeller, SE411-421 Hi-Temp	4.50" Dia., Cast Iron
		096722	Impeller, SE511-521	5.63" Dia., Cast Iron
		096723	Impeller, SEV511-521	5.63" Dia., Bronze
18	1	099295	Ground Wire Assy	
19	1	068984	◇† Gasket	
20	1	089120	Volute	Cast Iron
21	4	1-172-1	Hex Hd Cap Screw , SEV511-521	5/16-18 x 3.25" Stainless
	4	1-299-1	Hex Hd Cap Screw , SE411-421	5/16-18 x 2.75" Stainless
22	1	027271	Handle	
23	58 oz.	029034	Oil	
24	1	015000	† Pipe Plug	

**Order Online: [www.PumpCatalog.com](http://www.PumpCatalog.com)**

(\*) Included with item 9

(\*\*) Cast Iron Impeller replaces Zytel Impeller 089116, 5/02.

(‡) Units with a Build Code date before 11/01 may use capacitor Part Number 070964 or 035864

**Continued →**

# Series: SE & SEV

(Std & High Temp) Submersible Sewage Ejectors  
0.4 & 0.5HP, 1750RPM

# BARNES®

www.cranepumps.com

## BARNES • PROSSER • CROWN SERVICE PARTS

25	A/R	----	Loctite	#RC609
26	A/R	----	Loctite	#242
27	1	----	Bearing Sleeve	PART OF MOTOR ASSEMBLY
29	1		<b>Float Switch w/Plug, Mechanical</b>	<b>Series: A</b>
		101758	15FT	
		101758XA	20FT	
		101758XC	30FT	
		101758XF	50FT	
29	1		<b>Float Switch High Temp w/Plug</b>	<b>Series: HTA</b>
		090269	15FT	
		090269XB	25FT	
		090269XC	30FT	
		090269XF	50FT	
29	1	099262	Float Switch, Mechanical	Series: AU
29	1	090622	Float Switch High Temp, Mech.	Series: HTAU

### ITEMS 29A thru 35 ARE FOR MODELS: AU, USED WITH 099262 FLOAT.

29a	1	051448	Gland Nut	1-16 Stainless
29b	1	051449	Friction Ring	
30	1	090516	Cord Clip	
31	1	20-12-1	Lockwasher	#10 Stainless
32	1	2-88-1	Rd Hd Screw	10-32 x 3/8 Lg. Stainless
35	A/R	----	Permatex Sealant #2C	

### ITEMS 29A thru 35 ARE FOR MODELS: HTAU, USED WITH 090622 FLOAT.

29a	1	051762	Gland Nut	1-16 Stainless
29b	2	089121	Friction Ring	
29c	1	090103	Grommet	
30	1	090516	Cord Clip	
31	1	20-12-1	Lockwasher	#10 Stainless
32	1	2-88-1	Rd Hd Screw	10-32 x 3/8 Lg. Stainless
35	A/R	----	Permatex Sealant #2C	

40	A/R	----	Loctite, #242	
41	1	100829	Vertical Float Switch	Series: VF
42	1	100547	Mounting Bracket	
43	2	021337	Pan Hd, Self-Taping Screw	10-16, Stainless
45	2	See BOM	Connector	Hi-Temp Only
	3	See BOM	Connector	(HTAU) Hi-Temp Only
46	2	022229	Shrink Tube	Hi-Temp Only
	3	022229	Shrink Tube	(HTAU) Hi-Temp Only
47	1	096726	Adapter Plate	SEV, Only
48	A/R	098679	Shim, .030" THK	For use w/ IMP 089369 Only

Order Online: [www.PumpCatalog.com](http://www.PumpCatalog.com)

Continued →

SECTION 1B  
PAGE 54  
DATE 12/19

**CRANE**<sup>®</sup>

A Crane Co. Company

PUMPS & SYSTEMS

USA: (937) 778-8947 • Canada: (905) 457-6223 • International: (937) 615-3598

### BARNES • PROSSER • CROWN SERVICE PARTS

**TABLE 2 - MOTOR and HOUSING**

PUMP MODEL	MOTOR HOUSING (Item #14)	MOTOR SLEEVE (Item #1)
SE411	093065	102260
SE411A	093065	102260
SE411AU	093066	102260
SE411VF	093065	102260
SE421	093065	098835
SE421AU	093066	098835
SE411HT	093065	098838
SE411HTA	093065	098838
SE411HTAU	093066	098838
SE421HT	093065	098835
SE421HTAU	093066	098835
SE511	093065	098838
SE511A	093065	098838
SE511AU	093066	098838
SE511VF	093065	098838
SE521	093065	098835
SE521AU	093066	098835
SEV511	093065	098838
SEV511A	093065	098838
SEV511AU	093066	098838
SEV511VF	093065	098838
SEV521	093065	098835
SEV521AU	093066	098835

**TABLE 3 - POWER CORDS SETS**

MODELS/ LENGTH	ITEM #9 SE411 Series & SE511, SEV511	ITEM #9 SE421 Series & SE521, SEV521	ITEM #9 SE411HT Series	ITEM #9 SE421HT Series
15 FT (5m) STD	099260	099261	100502	100525
20 Ft. (6m)	099260XA	099261XA	-	-
25 Ft. (7.5m)	-	-	100502XB	100525XB
30 Ft. (9m)	099260XC	099261XC	-	-
50 Ft. (15m)	099260XF	099261XF	100502XF	100525XF

Order Online: [www.PumpCatalog.com](http://www.PumpCatalog.com)

End