
Aquavar ABII Quick Start Guide

Installation Steps:

1. Install the Pump

- Plumb suction and discharge of pump into piping.
- Install a check valve on the suction side.
- Locate the pump as near liquid source as possible.

2. Install the Pressure Transducer

- Install the pressure transducer in the tank tee provided with the unit.
- Locate the transducer within 120" of the controller.

3. Mount the Controller

- Mount vertically in a well ventilated, shaded area with 8 inches of free air space on every side and temperature between 34° F and 104° F.

4. Connect Input Power

- Connect the 1Ø power from a 20 amp 2-pole circuit breaker.
- Do not use GFCI protection with ABII as nuisance tripping will result.

5. Output Power Connections

- Connect the output power leads from the controller to the 3 motor leads in the conduit box on the motor.

6. Set the motor Overload Switches (or dials, 3 and 5 HP)

- Complete systems have overloads pre-set at factory.

7. Set the Pressure - Factory pre-set is 50 PSI

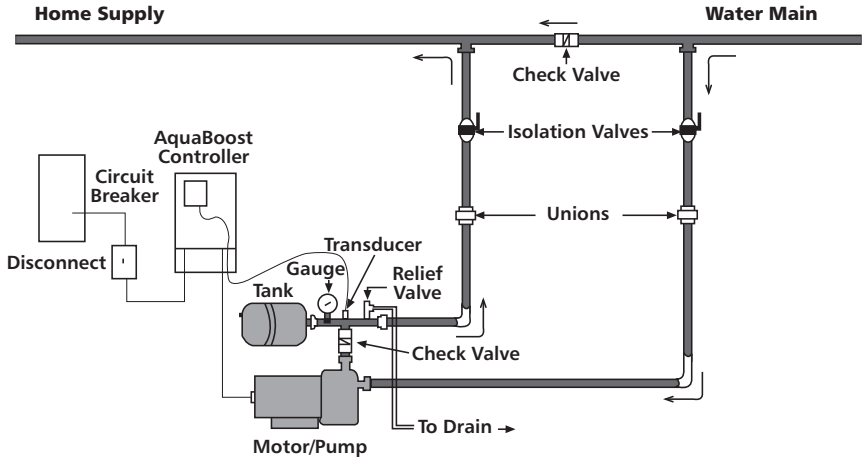
- Push and Hold the Increase or Decrease Pressure Adjust Pushbutton until the desired pressure setting is reached.
- The maximum allowable pressure setting is 85 psi.

8. Set the Application Switches (or dials, 3 and 5 HP)

- Minimum Speed of 10 Hz - the incoming pressure is within 20 PSI of the desired pressure setting.
- Minimum Speed of 30 Hz - the incoming pressure is 20 PSI or more below the desired pressure, if pumping from a tank or if drawing a suction lift.
- Ramp Speed - Slow - Low flow; Medium - Medium flow; Fast - High flow

Aquavar ABII Controller Typical Installation

This diagram shows a set-up for municipal water connection. This allows pump maintenance without main line shut-off.



AquaBoost II Required Components:

1. Pump with Motor
2. AquaBoost II Controller with Integral Pressure Sensor Cable
3. Pressure Tank
4. Pressure Sensor
5. Mounting Kit
6. Tank Tee with Pipe Plug
7. Pressure Gauge

Aquavar ABII Quick Start Up Guide

LABELS FOUND ON THE CONTROLLER ACCESS COVER:

Fault Codes

Motor Overload Setting					
▲WARNING: Disconnect Power And Wait For LED Indicator To Turn Off Before Touching Motor Overload Setting Switches.					
1 = UP			0 = DOWN		
DIP Switch Setting		Motor Overload Setting (Amps)			
1	2	3	4	1AB2	2AB2
1	1	1	1	2.5	4.6
1	1	1	0	2.8	5.2
1	1	0	1	3.3	5.3
1	0	1	1	3.5	5.8
0	1	1	1	3.8	6.5
0	0	0	0	4.2	6.9

Motor Overload Setting Label

Use this label to choose the correct Motor Overload Switch Setting. This label is found under the controller access cover.

Status Code Label

Use this label to diagnose any system errors. This label is found on the side of the controller access cover.

Status Codes*	
Green Light Codes	
Constant	Standby/Low Voltage
Blinking	Pump Running
Red Light Codes	
Constant	Replace Controller
1 Blink	No Water/Loss Of Prime
2 Blinks	Tank Water-Logged
3 Blinks	Pressure Sensor Fault
4 Blinks	Pump or Motor Bound
5 Blinks	Short Circuit
6 Blinks	Ground Fault
7 Blinks	High Temperature
8 Blinks	Over Voltage (>264V)
9 Blinks	Motor Overload
*No Light - No/Very Low Voltage	

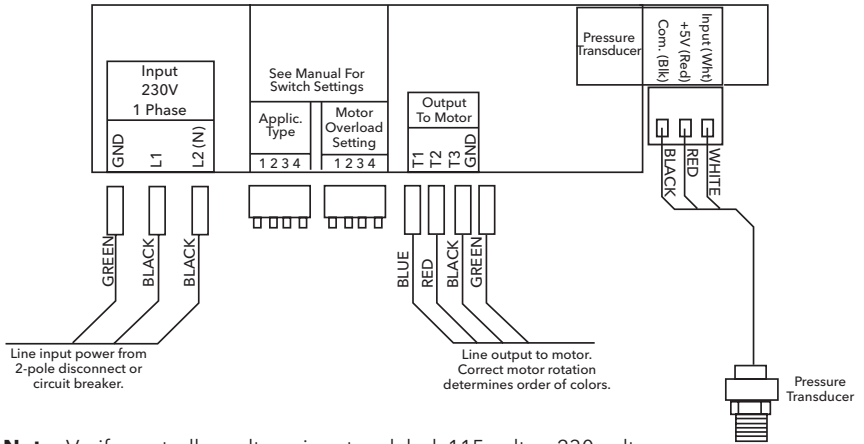
Application Switch Setting					
▲WARNING: Disconnect Power And Wait For LED Indicator To Turn Off Before Touching Application Setting Switches.					
DIP Switch Setting		1 = UP		0 = DOWN	
1	2	3	4	Minimum Speed (Hz)	Ramp Setting
1	1	1	1 *	10	Slow
1	1	1	0 *	10	Medium
1	1	0	1 *	10	Fast
1	0	1	1	30	Slow
0	1	1	1	30	Medium
0	0	0	0	30	Fast
*THESE SETTINGS ARE NOT TO BE USED WITH SUBMERSIBLE PUMPS.					

Application Switch Setting Label

Use this label to choose the correct Application Switch Setting. This label is found under the controller access cover.

Aquavar ABII Wiring Diagram

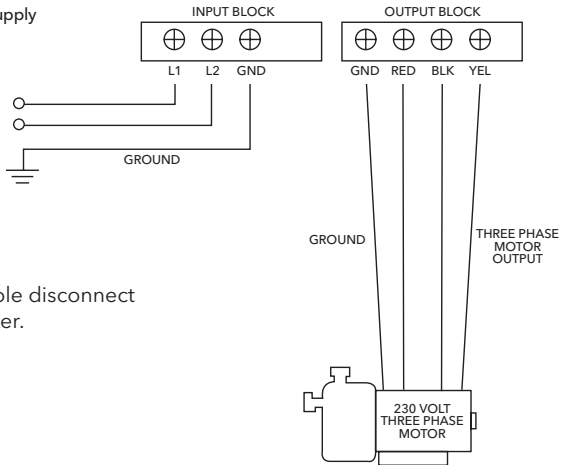
1 AND 2 HP



Note: Verify controller voltage input on label. 115 volt or 230 volt.

3 AND 5 HP

* Input Power Supply
Single Phase
208-240 VAC



Note: Use 2 pole disconnect or circuit breaker.