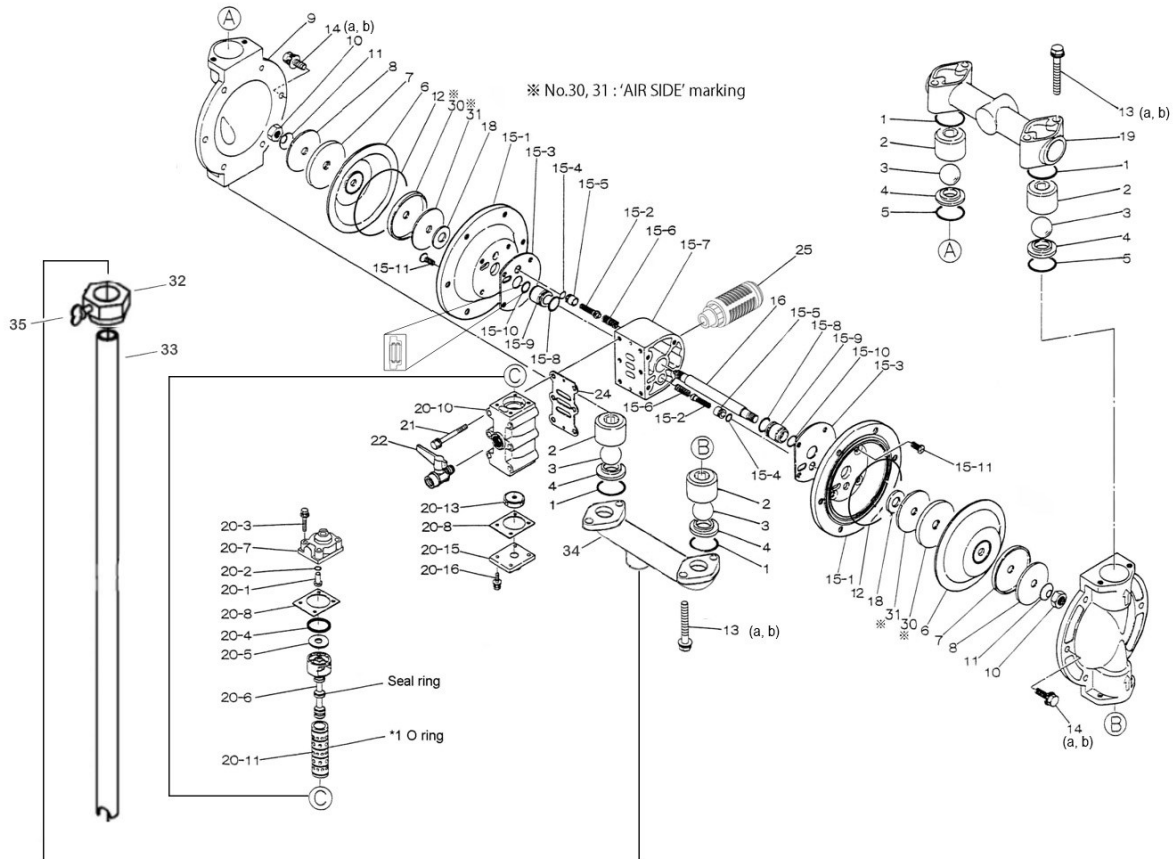


Air Operated Double Diaphragm Pump



Air Operated Double Diaphragm Pump

	NDP-20BSC-D	NDP-20BSE-D	NDP-20BSH-D	NDP-20BSN-D	NDP-20BSS-D	NDP-20BSV-D			
REF. NO.	PART NO.	PART NO.	PART NO.	PART NO.	PART NO.	PART NO.	DESCRIPTION	QTY.	REORDER
1	640036	684118	640036	640036	684118	642036	O-RING	4	
2	711701	711701	711701	711701	711701	711701	BALL GUIDE	4	
3	770705	770723	773126	770720	773170	770726	BALL	4	
4	711705	711705	711705	711705	711705	711705	VALVE SEAT	4	
5	640132	684117	640132	640132	684117	642132	O-RING	2	
6	772957	772959	771362	772958	771973	772960	DIAPHRAGM	2	
7	709153	709153	709153	709153	709153	709153	CENTER DISK	2	
8	709152	709152	709152	709152	709152	709152	PLAIN WASHER	2	
9	711693	711693	711693	711693	711693	711693	OUT CHAMBER	2	
10	682263	682263	682263	682263	682263	682263	NUT	2	
11	682730	682730	682730	682730	682730	682730	CONED DISK SPRING	2	
12	-	-	640151	-	640151	-	O-RING	2	
13a	621159	621159	621159	621159	621159	621159	BOLT	8	
13b	631936	631936	631936	631936	631936	631936	WAVE WASHER	8	
14a	621151	621151	621151	621151	621151	621151	BOLT	12	
14b	631936	631936	631936	631936	631936	631936	WAVE WASHER	12	
15	804878	804878	804878	804878	804878	804878	BODY ASSY.	1	
15-1	715937	715937	715937	715937	715937	715937	AIR CHAMBER	2	
15-2	802360	802360	802360	802360	802360	802360	PILOT VALVE ASSY.	2	
15-3	771057	771057	771057	771057	771057	771057	GASKET	2	
15-4	640009	640009	640009	640009	640009	640009	O-RING	2	
15-5	771945	771945	771945	771945	771945	771945	VALVE SEAT	2	
15-6	708666	708666	708666	708666	708666	708666	SPRING	2	
15-7	709812	709812	709812	709812	709812	709812	BODY	1	
15-8	685276	685276	685276	685276	685276	685276	O-RING	2	
15-9	780324	780324	780324	780324	780324	780324	THROAT BEARING	2	
15-10	685414	685414	685414	685414	685414	685414	PACKING	2	
15-11	682486	682486	682486	682486	682486	682486	FLAT HEAD BOLT	8	
16	709163	709163	709163	709163	709163	709163	CENTER ROD	1	
18	771054	771054	771054	771054	771054	771054	CUSHION	2	
19	831270	831270	831270	831270	831270	831270	MANIFOLD	1	
20	802362	802362	802362	802362	802362	802362	VALVE BODY ASSY.	1	
20-1	709161	709161	709161	709161	709161	709161	RESET BUTTON	1	
20-2	640005	640005	640005	640005	640005	640005	O-RING	1	
20-3	682704	682704	682704	682704	682704	682704	BOLT	4	
20-4	771241	771241	771241	771241	771241	771241	PACKING	1	
20-5	715961	715961	715961	715961	715961	715961	PLAIN WASHER	11	
20-6	802400	802400	802400	802400	802400	802400	C SPOOL VALVE ASSY.	1	
20-6 seal	771053	771053	771053	771053	771053	771053	SEAL RING	5	
20-7	710221	710221	710221	710221	710221	710221	CAP A	1	
20-8	771240	771240	771240	771240	771240	771240	GASKET	2	
20-10	711639	711639	711639	711639	711639	711639	VALVE BODY	1	
20-11	803931	803931	803931	803931	803931	803931	SLEEVE ASSY.	1	
20-11-*1	771080	771080	771080	771080	771080	771080	O-RING	6	
20-13	771914	771914	771914	771914	771914	771914	CUSHION	1	
20-15	709305	709305	709305	709305	709305	709305	CAP B	1	
20-16	682262	682262	682262	682262	682262	682262	BOLT	4	
21	682265	682265	682265	682265	682265	682265	BOLT	6	
22	686968	686968	686968	686968	686968	686968	BALL VALVE	1	
24	771056	771056	771056	771056	771056	771056	GASKET	1	
25	804697	804697	804697	804697	804697	804697	SILENCER	1	
30	716225	716225	716225	716225	716225	716225	CENTER DISK	2	
31	716226	716226	716226	716226	716226	716226	WASHER	2	
32	20S-BUNG	20S-BUNG	20S-BUNG	20S-BUNG	20S-BUNG	20S-BUNG	BUNG ADAPTER	1	
33	20S-PIPE	20S-PIPE	20S-PIPE	20S-PIPE	20S-PIPE	20S-PIPE	PIPE	1	
34	20S-MANI	20S-MANI	20S-MANI	20S-MANI	20S-MANI	20S-MANI	MANIFOLD	1	
35	91745A542	91745A542	91745A542	91745A542	91745A542	91745A542	THUMB SCREW	1	
KIT	K20-MC-1	K20-ME-1	K20-MH-1	K20-MN-1	K20-MS-1	K20-MV-1	LIQUID SIDE KIT		
KIT	K225-AM						AIR MOTOR KIT		
KIT	NDP-20SD						DRUM KIT		

Air Operated Double Diaphragm Pump

General Tools:

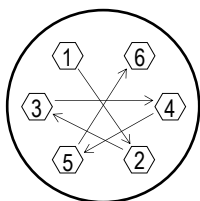
- Socket wrench - 10mm, 12mm, 13mm, 17mm, 22mm
- Hexagonal box wrenches - 5mm
- Open-end wrench - 22mm

Special Tools:

- Sleeve remover (713148) (sold separately)

Miscellaneous:

- Assembly Oil—turbine oil class 1 (equivalent to ISO VG32 grade)
- Nuts - M14x1.5
- Urea grease grade (NLGI) No. 2
- Lubricants equivalent to LOCTITE® Anti-Seize 767



Tightening Torques

Center Rod	29 ft-lbf {40 N-m}
Out Chamber (C/E/N/V)	8 ft-lbf {10 N-m}
Out Chamber (H/S)	10 ft-lbf {13 N-m}
Manifold Retainer Bolts	8 ft-lbf {10 N-m}
Valve Body Bolts	5.5 ft-lbf {7.5 N-m}
Cap A, Cap B	4.5 ft-lbf {6 N-m}

Customer Notes

Model #: _____
 Description: _____
 Serial #: _____
 Date Installed: _____
 Department Location: _____
 Tag/Project: _____