

BALDOR® • **RELIANCE**

Product Information Packet

EM4314T-G

60HP, 1780RPM, 3PH, 60HZ, 364T, A36062M, TEFC

| Part Detail | | | | | | | |
|-------------|---------|----------------|---------|-------------|-----------|---------------|------------|
| Revision: | J | Status: | PRD/A | Change #: | | Proprietary: | No |
| Type: | AC | Prod. Type: | A36062M | Elec. Spec: | A36WG1225 | CD Diagram: | 416820-002 |
| Enclosure: | TEFC | Mfg Plant: | | Mech. Spec: | | Layout: | 617428-021 |
| Frame: | 364T | Mounting: | F1 | Poles: | 04 | Created Date: | 12-14-2011 |
| Base: | | Rotation: | R | Insulation: | H | Eff. Date: | 09-26-2016 |
| Leads: | 3#4,6#6 | | | | | Replaced By: | |
| Literature: | | Elec. Diagram: | | | | | |

Nameplate NP2496L

MOBIL POLYREX EM

Nameplate NP2383L

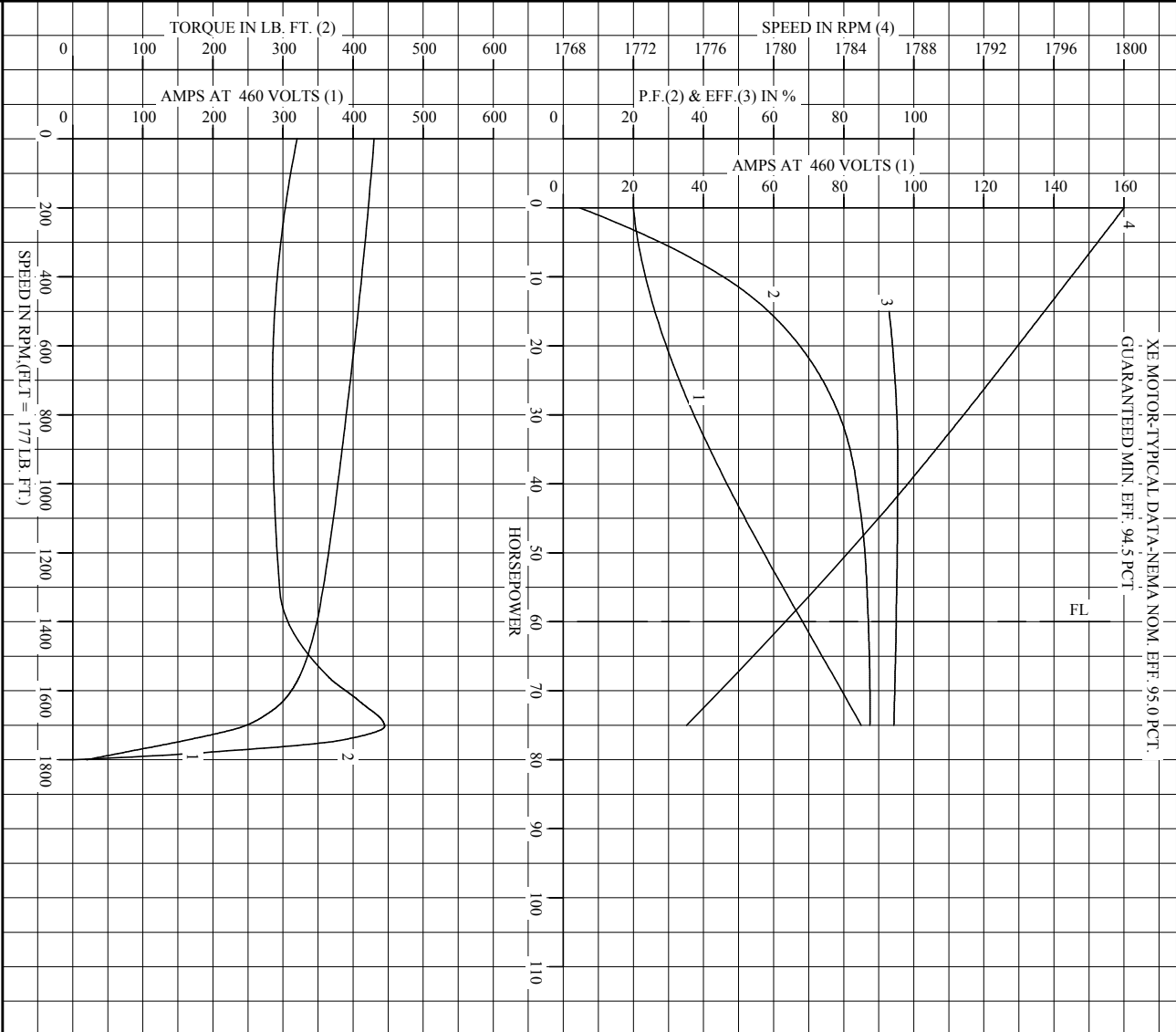
| | | | | | | | | | |
|-------------------------|------------|---------------|---------------|-----------------------|---------|-------------|----|----|------|
| CAT.NO. | EM4314T-G | SPEC NO. | A36-1286-1225 | | | | | | |
| HP | 60 | AMPS | 136/68 | VOLTS | 230/460 | DESIGN | B | | |
| FRAME | 364T | RPM | 1780 | HZ | 60 | AMB | 40 | SF | 1.15 |
| DRIVE END BEARING | 65BC03J30X | PHASE | 3 | DUTY | CONT | INSUL.CLASS | H | | |
| OPP D.E. BEARING | 65BC03J30X | TYPE | P | ENCL | TEFC | CODE | G | | |
| SER.NO. | | POWER FACTOR | 87 | NEMA-NOM-EFFICIENCY | 95 | | | | |
| NEMA NOM/CSA QUOTED EFF | | MAX CORR KVAR | 10.0 | GUARANTEED EFFICIENCY | 94.1 | | | | |
| | EM4314T-G | MOTOR WEIGHT | 907 | | | | | | |

| Parts List | | |
|-------------|---------------------------------------|----------|
| Part Number | Description | Quantity |
| SA235799 | SA A36-1286-1225 | 1.000 EA |
| RA222758 | RA A36-1286-1225 | 1.000 EA |
| 421948032 | LABEL, MYLAR | 1.000 EA |
| NP2496L | MOTOR LUBE NAMEPLATE | 1.000 EA |
| 000613006PU | N/P (RELEASE QTY 10,000) UL CSA LABEL | 1.000 EA |
| 000692000VD | LABEL WARNING | 1.000 EA |
| NP2383L | SUPER-E ,SS, CC, CSA-C US, CSA EEV | 1.000 EA |
| 085922073B | BRKT 360 085922072WCC KB | 1.000 EA |
| 415072001B | CLAMP | 1.000 EA |
| 078559001A | +FANCV - 360 | 1.000 EA |
| 034180012DA | KEY 1X4X1/4X1-1/2 L | 1.000 EA |
| 078548001K | FAN KB 100/30 (70) 360 | 1.000 EA |
| 004824015A | GREASE POLYREX EM | 0.540 LB |
| 032018012DK | HHCS 1/2-13X1-1/2 PLTD. | 4.000 EA |
| 032018008AK | HHCS 1/4-20X1 PLATED | 4.000 EA |
| 032018024CK | HHCS 3/8-16X3 PLTD. | 3.000 EA |
| 415096002A | CPLG 1/8 HEX TYPE | 1.000 EA |
| 410700004F | WSHR | 1.000 EA |
| 035000001G | GREASE RELIEF FITTING, ALEMITE 317400 | 1.000 EA |
| 034530052AB | P/NIP 1/8X6-1/2 GALV. | 1.000 EA |
| 034690001AB | SQHDPLG, COND | 1.000 EA |
| 034600001AA | BUSH 1/4TO1/8 BLACK | 1.000 EA |
| 034690001AB | SQHDPLG, COND | 1.000 EA |
| 034600001AA | BUSH 1/4TO1/8 BLACK | 1.000 EA |

| Parts List (continued) | | |
|------------------------|---|----------|
| Part Number | Description | Quantity |
| 415045002E | SLGR | 1.000 EA |
| 085922073B | BRKT 360 085922072WCC KB | 1.000 EA |
| 032018012DK | HHCS 1/2-13X1-1/2 PLTD. | 4.000 EA |
| 032018024CK | HHCS 3/8-16X3 PLTD. | 3.000 EA |
| 035000001G | GREASE RELIEF FITTING, ALEMITE 317400 | 1.000 EA |
| 077176000L | C/BOX, PAINTED 360-400 | 1.000 EA |
| BP5327 | SHAFT GRD BRUSH (SGR-74.7-3CFHAT2) | 1.000 EA |
| 077176001A | CBOXC, PAINTED 360-400 | 1.000 EA |
| 043292000AJ | GASK 320-400 | 1.000 EA |
| 402731001A | GASK 360-440 | 1.000 EA |
| 418150003A | GREASE FITTING CAP | 1.000 EA |
| 032018005AK | HHCS 1/4-20X5/8 PLATED | 4.000 EA |
| 032018008CK | HHCS 3/8-16X1L PLATED | 4.000 EA |
| 035000001A | ALFTG 1/8" 1610-BL | 1.000 EA |
| 035000001A | ALFTG 1/8" 1610-BL | 1.000 EA |
| 418150003A | GREASE FITTING CAP | 1.000 EA |
| 415000103D | T/LUG #4AWG-1/0AWG W/HOLE FOR .250 BOLT | 1.000 EA |
| 406099000A | PLUG - FAN COVER 320-440 | 1.000 EA |
| 033512004LB | HHTTS 1/4-20X1/2 PLTD. | 1.000 EA |
| MG1000Y03 | MUNSELL 2.53Y 6.70/ 4.60, GLOSS 20, | 1.000 GA |
| 033775004EA | DRSCR #6-1/4 304 S.S. | 2.000 EA |
| 034180034HA | KEY 5/8X5/8X4-1/4 L | 1.000 EA |
| PK5004A01 | WOODEN BASE ASSY,314-316 FR. | 1.000 EA |
| HW1000A32 | 5/16 FL WASHER WIDE,ID=.344,OD=1.125 | 3.000 EA |

| | | |
|------------|------------------------------------|----------|
| 032509020C | CARRIAGE BOLT - 360 | 3.000 EA |
| 14PA1000 | PACKAGING 314 GROUP COMBINED PRINT | 1.000 EA |

REL. S.O. _____ RPM 1780 S.F. 1.15 ROTOR 418141035YE
 FRAME 364T VOLTS 230/460 NEMA DESIGN B TEST S.O. ---
 HP 60 AMPS 136/68.0 CODE LETTER G TEST DATE ---
 TYPE P DUTY CONT ENCLOSURE TEFC STATOR RES. @ 25 °C .0277/.110
 PHASE/HERTZ 3/60 AMB °C/INSUL 40/H E/S 492983 OHMS (BETWEEN LINES)



AMPERES SHOWN FOR 460 VOLT CONNECTION, IF OTHER VOLTAGE CONNECTIONS ARE AVAILABLE, THE AMPERES WILL VARY INVERSELY WITH THE RATED VOLTAGE.

BALDOR
 A MEMBER OF THE ABB GROUP

DR. BY G.R. WEBB
 CK. BY W.L. SMITH
 App. BY W.L. SMITH
 DATE 12/13/11

A-C MOTOR PERFORMANCE CURVES
 A36WG1225-R003
 ISSUE DATE 12/13/11

Printed on 12/13/11 11:06 @ ragsun

| | | | | | | |
|-----------|-------------|-------------------|-----------|--|-------------|---------|
| REL. S.O. | FRAME | HP | TYPE | PHASE/HERTZ | RPM | VOLTS |
| | 364T | 60 | P | 3/60 | 1780 | 230/460 |
| AMPS | DUTY | AMB °C/ INSUL. | S.F. | NEMA DESIGN | CODE LETTER | ENCL. |
| 136/68.0 | CONT | 40/H | 1.15 | B | G | TEFC |
| E/S | ROTOR | TEST S.O. | TEST DATE | STATOR RES. @25 °C (OHMS (BETWEEN LINES)) | | |
| 492983 | 418141035YE | --- | --- | .0277/.110 | | |

PERFORMANCE


| LOAD | HP | AMPERES | RPM | POWER FACTOR % | EFFICIENCY % |
|---------|------|---------|------|----------------|--------------|
| NO LOAD | 0 | 20.1 | 1800 | 4.67 | 0 |
| 1/4 | 15.0 | 25.8 | 1795 | 58.6 | 93.0 |
| 2/4 | 30.0 | 37.5 | 1791 | 78.7 | 95.2 |
| 3/4 | 45.0 | 51.9 | 1786 | 85.0 | 95.3 |
| 4/4 | 60.0 | 68.0 | 1781 | 87.0 | 95.0 |
| 5/4 | 75.0 | 85.1 | 1775 | 87.5 | 94.3 |

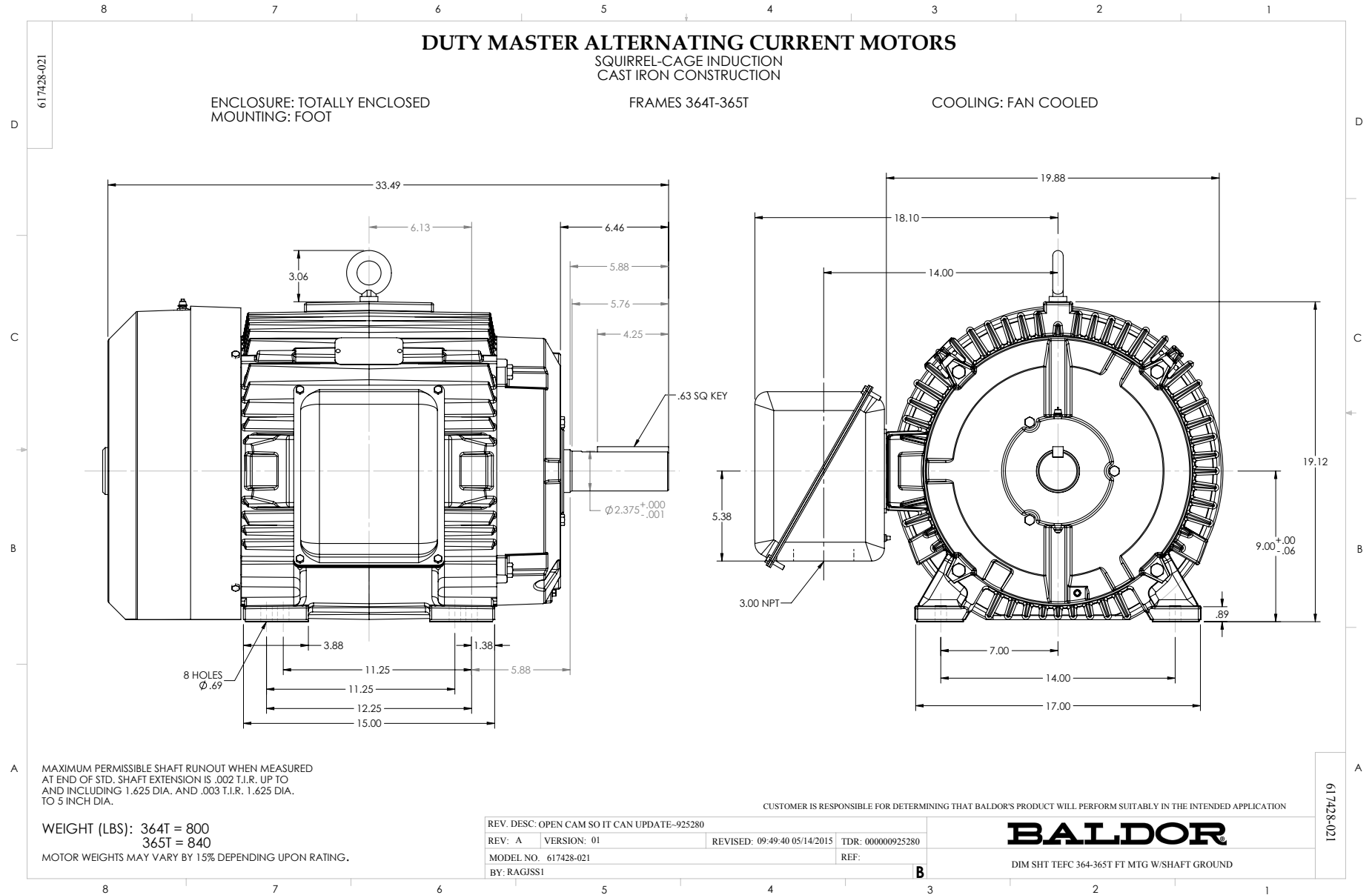
SPEED TORQUE

| | RPM | TORQUE % FULL LOAD | TORQUE LB.-FT. | AMPERES |
|--------------|------|--------------------|----------------|---------|
| LOCKED ROTOR | 0 | 181 | 320 | 430 |
| PULL UP | 720 | 161 | 285 | 395 |
| BREAKDOWN | 1703 | 251 | 445 | 244 |
| FULL LOAD | 1781 | 100 | 177 | 68.0 |

AMPERES SHOWN FOR 460. VOLT CONNECTION. IF OTHER VOLTAGE CONNECTIONS ARE AVAILABLE, THE AMPERES WILL VARY INVERSELY WITH THE RATED VOLTAGE

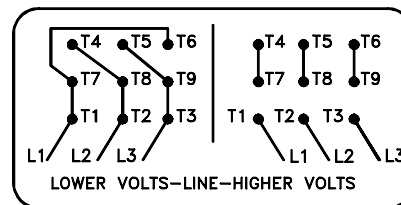
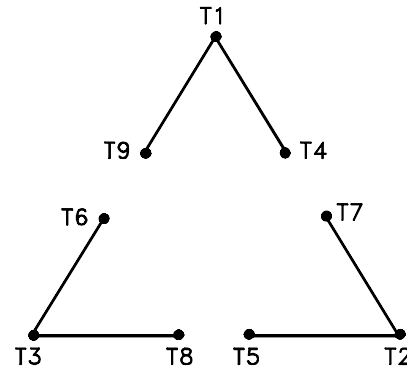
REMARKS: XE MOTOR-TYPICAL DATA-NEMA NOM. EFF. 95.0 PCT.
GUARANTEED MIN. EFF. 94.5 PCT

| | | |
|--|---|--|
|  <p>A MEMBER OF THE ABB GROUP</p> | DR. BY G. R. WEBB CK. BY W. L. SMITH APP. BY W. L. SMITH DATE 12/13/11 | A-C MOTOR PERFORMANCE DATA A36WG1225-R003 ISSUE DATE 12/13/11 |
|--|---|--|



416820-002

A-C MOTOR
 CONNECTION DIAGRAM
 STANDARD 9 LEAD DELTA-CONNECTED



(N.P. 1575-B)

416820-002

| | | |
|--------------------------------------|------------------------------|-------------------|
| REV. DESC: LOADED TO BUS, C/R 335225 | | |
| REV. LTR: - | VERSION: 00 | TDR: 000000538207 |
| FILE: \MGA\00000\661 | REVISED: 10:47:51 04/30/2010 | |
| MTL: - | BY: RAGRA | |

BALDOR

CONN DIAG - STANDARD 9 LEAD, DELTA-CONNECTED

SH 1 of 1

Marketing maintained PDF of MN408:

<http://www.baldor.com/support/Literature/Load.ashx/MN408?ManNumber=MN408>

Marketing maintained PDF of MN416:

<http://www.baldor.com/support/Literature/Load.ashx/MN416?ManNumber=MN416>