

BALDOR® • *RELIANCE*

Product Information Packet

FDL3611TM

2HP,1725RPM,1PH,60HZ,182T,3634L,TEFC,F1

| Part Detail | | | | | | | |
|-------------|------------------------------|----------------|-------|-------------|----------|---------------|------------|
| Revision: | H | Status: | PRD/A | Change #: | | Proprietary: | No |
| Type: | AC | Prod. Type: | 3634L | Elec. Spec: | 36WG3444 | CD Diagram: | CD0008 |
| Enclosure: | TEFC | Mfg Plant: | | Mech. Spec: | 36Q168 | Layout: | 36LYQ168 |
| Frame: | 182T | Mounting: | F1 | Poles: | 04 | Created Date: | 12-12-2013 |
| Base: | RG | Rotation: | R | Insulation: | F | Eff. Date: | 01-19-2017 |
| Leads: | 4#14 A&J,2#16 B PH,1#10 #4TH | | | | | Replaced By: | |
| Literature: | | Elec. Diagram: | | | | | |

| Nameplate NP1280L | | | | | | | | | | | |
|-------------------|---------------|--|--|--|------|------|--|----------------|----|----|---|
| CAT.NO. | FDL3611TM | | | | | | | | | | |
| SPEC. | 36Q168-3444G1 | | | | | | | | | | |
| HP | 2 | | | | | | | | | | |
| VOLTS | 115/230 | | | | | | | | | | |
| AMP | 28/14 | | | | | | | | | | |
| RPM | 1725 | | | | | | | | | | |
| FRAME | 182T | | | | HZ | 60 | | | PH | 1 | |
| SER.F. | 1.00 | | | | CODE | J | | DES | L | CL | F |
| NEMA-NOM-EFF | 75 | | | | PF | 67 | | | | | |
| RATING | 40C AMB-CONT | | | | | | | | | | |
| CC | | | | | | | | USABLE AT 208V | | | |
| DE | 6206 | | | | ODE | 6205 | | | | | |
| ENCL | TEFC | | | | SN | | | | | | |

| Parts List | | |
|-------------|------------------------------------------|----------|
| Part Number | Description | Quantity |
| SA274232 | SA 36Q168-3444G1 | 1.000 EA |
| RA260819 | RA 36Q168-3444G1 | 1.000 EA |
| TPCRT31CASP | THERMAL 1PH 1.00 MAN 105C X | 1.000 EA |
| EC1850A06SP | ELEC CAP 115V 2.0 X 4.3 X | 2.000 EA |
| 36CB3000A36 | SP'L CONDUIT BOX MODEL 36 W/ 1" MTO & GA | 1.000 EA |
| 36GS1000SP | GASKET-CONDUIT BOX, .06 THICK #SV-330 LE | 1.000 EA |
| 51XB1016A07 | 10-16 X 7/16 HXWSSLD SERTYB | 2.000 EA |
| 11XW1032G06 | 10-32 X .38, TAPTITE II, HEX WSHR SLTD U | 1.000 EA |
| HW3001B01 | BRASS CUP WASHER, FOR #8 SCREW | 1.000 EA |
| HA6015A11 | EARED 1" THERMAL RETAINER (PLATED) | 1.000 EA |
| RM1014A01SP | BUTYL RUB.THRM COV. (MENA) | 1.000 EA |
| 51XB1214A10 | 12-14 X 5/8HX WS SL SR TYBX | 2.000 EA |
| NS2500A02 | INSULATOR, MAN THER PROT | 1.000 EA |
| 36EP3104A02 | FREP MACH W/O GRSSR, RAISED FH PADS | 1.000 EA |
| HA7010A01 | CAPACITOR RETENTION CLAMP, 6.562 LONG | 1.000 EA |
| 13XF0832A08 | 8-32 X.50 PAN HD,SLTD, TYPE F SCREW, ZIN | 2.000 EA |
| 36CB3800SP | CAPACITOR COVER, CAST | 1.000 EA |
| 36GS3000 | GASKET, CAPACITOR COVER LEXIDE | 1.000 EA |
| 10XN2520A12 | O1/4-20X 3/4 HEX HEAD CAP | 2.000 EA |
| HW5100A05 | WVY WSHR F/205 & 304 BRGS | 1.000 EA |
| 36EP3100A45 | SPL PU ENDPLATE FOR SEAL, NO GREASER | 1.000 EA |
| HW4600B50SP | SEAL 1.156 X 1.874 X 0.250 SINGLE LIP DB | 1.000 EA |
| HW4600B36SP | V-RING SLINGER 1.188 X 1.690 X .24 VITON | 1.000 EA |
| XY2520A12 | 1/4-20 HEX NUT, DIRECTIONAL SERRATIONS | 4.000 EA |

| Parts List (continued) | | |
|------------------------|------------------------------------------|----------|
| Part Number | Description | Quantity |
| 51XB1214A16 | 12-14X1.00 HXWSSLD SERTYB | 1.000 EA |
| 36FH4009A101 | IEC FH NO GREASER, W/PRIMER | 1.000 EA |
| 51XW1032A06 | 10-32 X .38, TAPTITE II, HEX WSHR SLTD S | 3.000 EA |
| 35CB4514GX | CONDUIT BOX LID KIT | 1.000 EA |
| 51XW0832A07 | 8-32 X .44, TAPTITE II, HEX WSHR SLTD SE | 4.000 EA |
| HA1005A03SP | SLINGER, OD 1.750, ID .938, 205 BRG | 1.000 EA |
| HW2501E16 | 3KEY, 1/4 SQ X 1.750 | 1.000 EA |
| HA7000A02 | KEY RETAINER RING, 1 1/8 DIA, 1 3/8 DIA | 1.000 EA |
| 85XU0407S04 | 4X1/4 U DRIVE PIN STAINLESS | 2.000 EA |
| LB1087 | LABEL,MANUAL RESET (ROLL LABEL) | 1.000 EA |
| MJ5001A27 | 32220KN GRAY SEALER *MIN BUY 4 QTS=1GAL | 0.001 QT |
| WD1000A15 | 3-520132-2 AMP FLAG (4M/RL NON-CANC/NON- | 4.000 EA |
| MJ1000A02 | GREASE, POLYREX EM EXXON (USe 4824-15A) | 0.050 LB |
| 36FN3000A01SP | EXFN, PLASTIC, 7.00 OD, .912 ID | 1.000 EA |
| MG1025C02 | WILKOFASST SG, 787.105, TAN | 0.022 GA |
| HA3101A25 | THRUBOLT 1/4-20 X 11.000 OHIO ROD | 4.000 EA |
| 51XW0832A07 | 8-32 X .44, TAPTITE II, HEX WSHR SLTD SE | 2.000 EA |
| TP5059 | GENERIC THERMAL KIT | 1.000 EA |
| SP5172A01 | 37 TYPE L TORQ STAT SWITCH LEAD ASSEMBLY | 1.000 EA |
| LC0008 | CONNECTION LABEL | 1.000 EA |
| LB1119N | WARNING LABEL | 1.000 EA |
| MN416A01 | TAG-INSTAL-MAINT no wire (1000/bx) 11/14 | 1.000 EA |
| NP1280L | ALUM FARM DUTY UL CSA CC THERMAL | 1.000 EA |
| 36PA1001 | PKG GRP, PRINT PK1017A06 | 1.000 EA |

| Accessories | | |
|--------------------|-----------------------------------------|-------------------|
| Part Number | Description | Multiplier |
| 36-3301 | C FACE KIT | A8 |
| 36EP1304A62SP | FLANGE MTD ENDPLATE 182-4TD -ENCL (LESS | A8 |

AC Induction Motor Performance Data

Record # 61428 - Typical performance - not guaranteed values

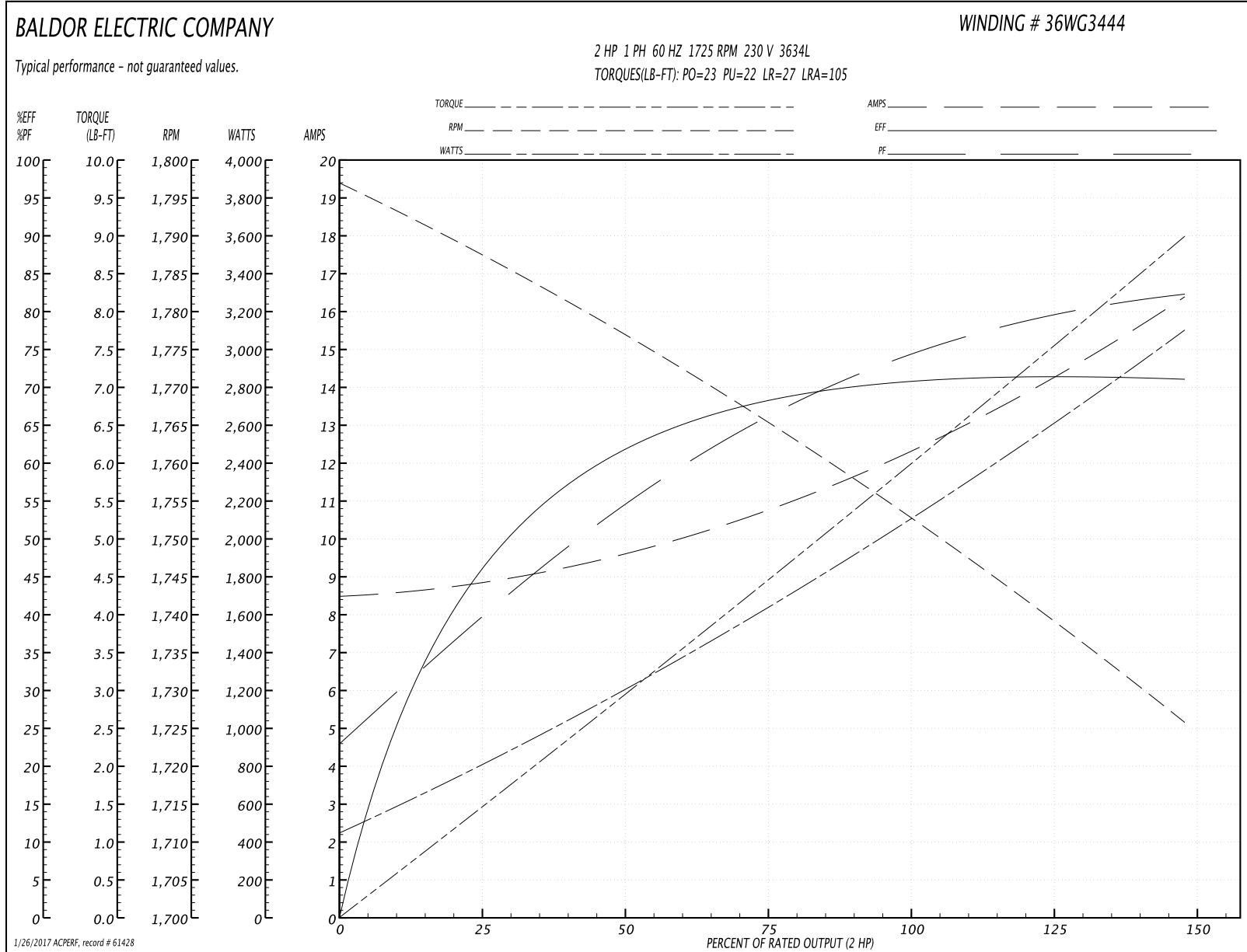
| | | |
|-------------------------------|--------------------|------------------------|
| Winding: 36WG3444-R003 | Type: 3634L | Enclosure: TEFC |
|-------------------------------|--------------------|------------------------|

| Nameplate Data | | | | 230 V, 60 Hz: High Voltage Connection | |
|-----------------------|--------------|--------------|----|------------------------------------------|------------------------------|
| Rated Output (HP) | 2 | | | Full Load Torque | 6 LB-FT |
| Volts | 115/230 | | | Start Configuration | direct on line |
| Full Load Amps | 28/14 | | | Breakdown Torque | 23 LB-FT |
| R.P.M. | 1725 | | | Pull-up Torque | 22 LB-FT |
| Hz | 60 | Phase | 1 | Locked-rotor Torque | 27 LB-FT |
| NEMA Design Code | L | KVA Code | J | Starting Current | 105 A |
| Service Factor (S.F.) | 1 | | | No-load Current | 8.5 A |
| NEMA Nom. Eff. | 75 | Power Factor | 67 | Line-line Res. @ 25°C | 0.732 Ω A Ph 0.396 Ω B Ph |
| Rating - Duty | 40C AMB-CONT | | | Temp. Rise @ Rated Load | 86°C |

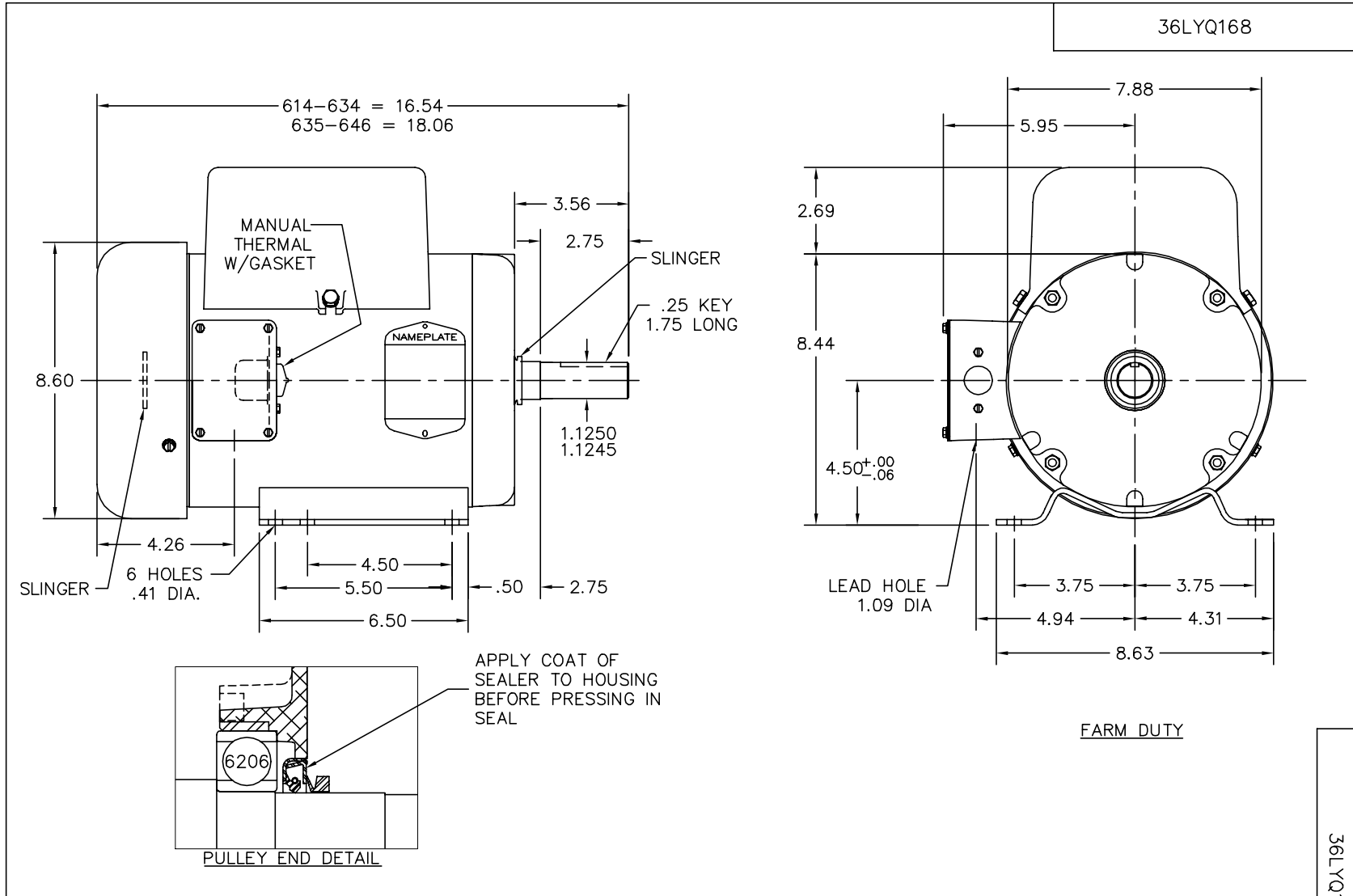
Load Characteristics 230 V, 60 Hz, 2 HP

| % of Rated Load | 25 | 50 | 75 | 100 | 125 | 150 |
|-----------------|------|------|------|------|------|------|
| Power Factor | 43 | 57 | 68 | 76 | 81 | 84 |
| Efficiency | 47 | 62 | 68 | 71 | 71.5 | 71 |
| Speed | 1786 | 1776 | 1765 | 1754 | 1740 | 1725 |
| Line amperes | 8.8 | 9.7 | 10.8 | 12.3 | 14.2 | 16.4 |

Performance Graph at 230V, 60Hz, 2.0HP Typical performance - Not guaranteed values



1/26/2017 ACPERF, record # 61428



CUSTOMER IS RESPONSIBLE FOR DETERMINING THAT BALDOR'S PRODUCT WILL PERFORM SUITABLY IN THE INTENDED APPLICATION.

| | | |
|------------------------------------|------------------------------|-------------------|
| REV. DESC: ADD FLAT SLINGER TO ODE | | |
| REV. LTR: A | VERSION: 01 | TDR: 000000909271 |
| FILE: \AAA\00205\531 | REVISED: 10:46:23 04/08/2015 | BY: ENKANVO |
| MTL: - | ☉ □ | |

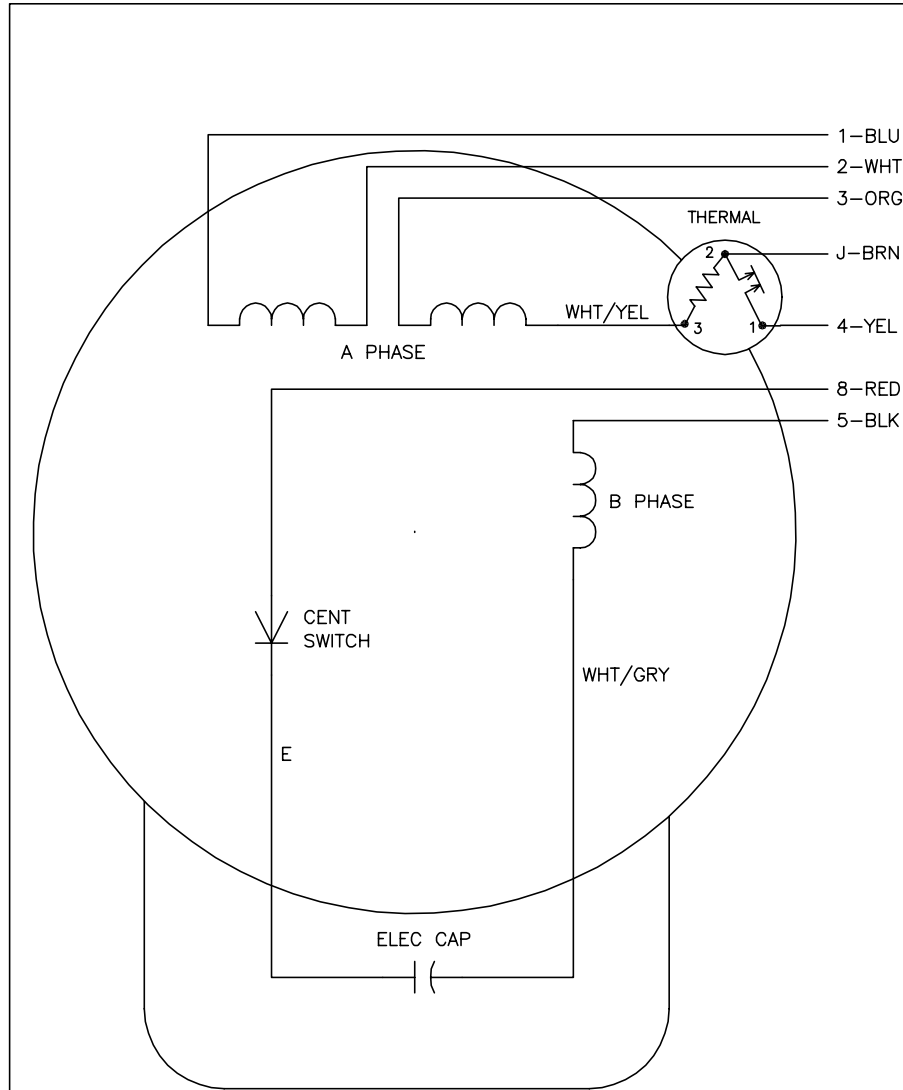
BALDOR

HOR TEFC L-LC NEMA 182T-184T, 1.00 MTO IN KOBX, SEAL PU END

SH 1 of 1

36LYQ168

CD0008



| | LINE A | LINE B | JOIN | JOIN |
|----------|--------|--------|-------|-------|
| HIGH STD | 1 | 4 | 2,3,8 | J,5 |
| HIGH OPP | 1 | 4 | 2,3,5 | J,8 |
| LOW STD | 1,3,8 | 4 | - | 2,J,5 |
| LOW OPP | 1,3,5 | 4 | - | 2,J,8 |

NOTES:

1. STANDARD ROTATION IS CCW FACING END OPPOSITE SHAFT EXTENSION.
2. MULTIPLE CAPACITORS ARE CONNECTED IN PARALLEL UNLESS OTHERWISE SPECIFIED.
3. LEAD COLORS ARE OPTIONAL. LEADS MUST ALWAYS BE NUMBERED AS SHOWN.

| | | |
|------------------------------------------------------------|----------------------|------------------------------|
| REV. DESC: REMOVE 2-TERMINAL THERMAL DETAIL, SEE CD0008A02 | | |
| REV. LTR: F | VERSION: 01 | TDR: 000000360649 |
| 80000D | FILE: \AAA\00007\408 | REVISED: 10:56:54 04/18/2005 |
| | MTL: - | BY: ENJOEPO |

BALDOR ELECTRIC Co.

TYPE L, DV, REV, THERMAL, 7 LEADS

CD0008