

# **BALDOR**® • **RELIANCE**

## **Product Information Packet**

# **L1508T-50**

**5HP,1455RPM,1PH,50HZ,213T,3730LC,OPSB,F1**

Part Detail							
Revision:	M	Status:	PRD/A	Change #:		Proprietary:	No
Type:	AC	Prod. Type:	3730LC	Elec. Spec:	37WGT917	CD Diagram:	CD0017A02
Enclosure:	OPSB	Mfg Plant:		Mech. Spec:	37K214	Layout:	37LYK214
Frame:	213T	Mounting:	F1	Poles:	04	Created Date:	08-02-2006
Base:	RG	Rotation:	R	Insulation:	B	Eff. Date:	07-14-2015
Leads:	2#14 A PH,2#14 B PH					Replaced By:	
Literature:		Elec. Diagram:					

Nameplate NP1372L										
CAT.NO.	L1508T-50									
SPEC.	37K214T917									
HP	5									
VOLTS	220									
AMP	21.6									
RPM	1455									
FRAME	213T				HZ	50			PH	1
SER.F.	1.00		CODE	F	DES	L		CL	B	
NEMA-NOM-EFF	82.5		PF	94						
RATING	40C AMB-CONT									
CC									USABLE AT 208V	
DE	6307				ODE	6206				
ENCL	OPSB		SN							
	IP23									

Parts List		
Part Number	Description	Quantity
SA146327	SA 37K214T917	1.000 EA
RA135412	RA 37K214T917	1.000 EA
OC3060F10SP	CYL OIL CAP 60MFD/370V	1.000 EA
EC1216C06SP	ELEC CAP, 216-259 MFD, 250V, 2.06D X 4.	2.000 EA
HA6361A01	LIFTING LUG FOR 37, 39 & 40 FRAME ZINC	2.000 EA
37CB3006	37 CB CASTING W/1.38 LEAD HOLE @ 6:00	1.000 EA
51XW2520A10	.25-20 X .62, TAPTITE II, HEX WSHR SLTD	2.000 EA
11XW1032G06	10-32 X .38, TAPTITE II, HEX WSHR SLTD U	1.000 EA
37EP3200A01SP	FR ENDPLATE, FOR ROUTING PURPOSES	1.000 EA
HW4500A01	1641B(ALEMITE)400 UNIV, GREASE FITT	1.000 EA
37AD2005	BAFFLE PLATE, FOR OPSB 1 PHASE	1.000 EA
SP1008A01	BAFFLE, MODEL 36 & 37	1.000 EA
13XF0832A08	8-32 X.50 PAN HD,SLTD, TYPE F SCREW, ZIN	2.000 EA
10XN2520A10	1/4-20X 5/8 HEX HD X	2.000 EA
HW1001A25	LOCKWASHER 1/4, ZINC PLT .493 OD, .255 I	2.000 EA
HW5100A06	W2420-025 WVY WSHR (WB)	1.000 EA
37PE3201A01	PU ENDPLATE ASSEMBLY FOR ROUTING	1.000 EA
HW4500A01	1641B(ALEMITE)400 UNIV, GREASE FITT	1.000 EA
XY3118A12	5/16-18 HEX NUT DIRECTIONAL SERRATION	4.000 EA
37CB4516	LIPPED LID FOR 37 FRAME NEC KOBX	1.000 EA
51XW0832A07	8-32 X .44, TAPTITE II, HEX WSHR SLTD SE	4.000 EA
HW2501F21	KEY, 5/16 SQ X 2.375	1.000 EA
HA7000A02	KEY RETAINER RING, 1 1/8 DIA, 1 3/8 DIA	1.000 EA
85XU0407S04	4X1/4 U DRIVE PIN STAINLESS	2.000 EA

<b>Parts List (continued)</b>		
<b>Part Number</b>	<b>Description</b>	<b>Quantity</b>
LB1115N	LABEL,LIFTING DEVICE (ON ROLLS)	1.000 EA
37CB3802SP	CAPACITOR COVER, CAST	1.000 EA
HA7010A01	CAPACITOR RETENTION CLAMP, 6.562 LONG	1.000 EA
WD1000A15	3-520132-2 AMP FLAG (4M/RL NON-CANC/NON-	6.000 EA
MJ1000A02	GREASE, POLYREX EM EXXON (USe 4824-15A)	0.050 LB
MG1000G27	MED CHARCOAL METALLIC GREY 400-0096	0.028 GA
SP5172A05	37 TYPE LC TORQ STAT SW LEAD ASSEMBLY	1.000 EA
37AD2001A01	BAFFLE PLATE, STAMPED	1.000 EA
HA3104A39	THRUBOLT-5/16-18 X 12.250	4.000 EA
LB1119N	WARNING LABEL	1.000 EA
LC0017	CONN LABEL-1 PHASE-SINGLE VOLT-REV ROTNO	1.000 EA
NP1372L	ALUM UL CSA CE CC	1.000 EA
36PA1001	PKG GRP, PRINT PK1017A06	1.000 EA
MN416A01	TAG-INSTAL-MAINT no wire (1200/bx) 11/14	1.000 EA

<b>Accessories</b>		
<b>Part Number</b>	<b>Description</b>	<b>Multiplier</b>
37-1404	C FACE KIT	A8

**AC Induction Motor Performance Data**

Record # 22939 - Typical performance - not guaranteed values

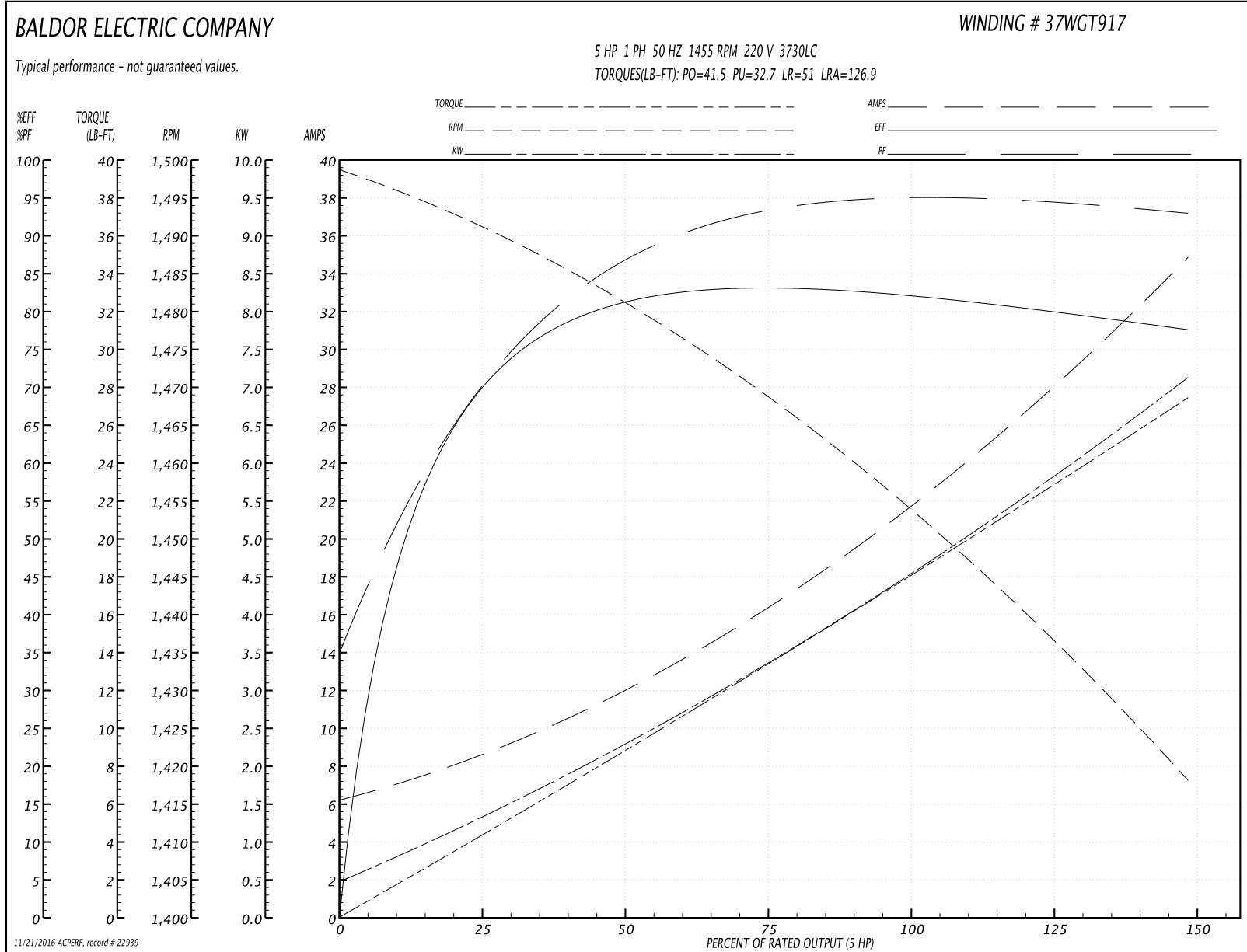
<b>Winding:</b> 37WGT917-R001	<b>Type:</b> 3730LC	<b>Enclosure:</b> OPSB
-------------------------------	---------------------	------------------------

Nameplate Data				220 V, 50 Hz: Single Voltage Motor	
Rated Output (HP)	5			Full Load Torque	17.9 LB-FT
Volts	220			Start Configuration	direct on line
Full Load Amps	21.6			Breakdown Torque	41.5 LB-FT
R.P.M.	1455			Pull-up Torque	32.7 LB-FT
Hz	50	Phase	1	Locked-rotor Torque	51 LB-FT
NEMA Design Code	L	KVA Code	F	Starting Current	126.9 A
Service Factor (S.F.)	1			No-load Current	6.41 A
NEMA Nom. Eff.	82.5	Power Factor	94	Line-line Res. @ 25°C	0.429 Ω A Ph 1.37 Ω B Ph
Rating - Duty	40C AMB-CONT			Temp. Rise @ Rated Load	50°C

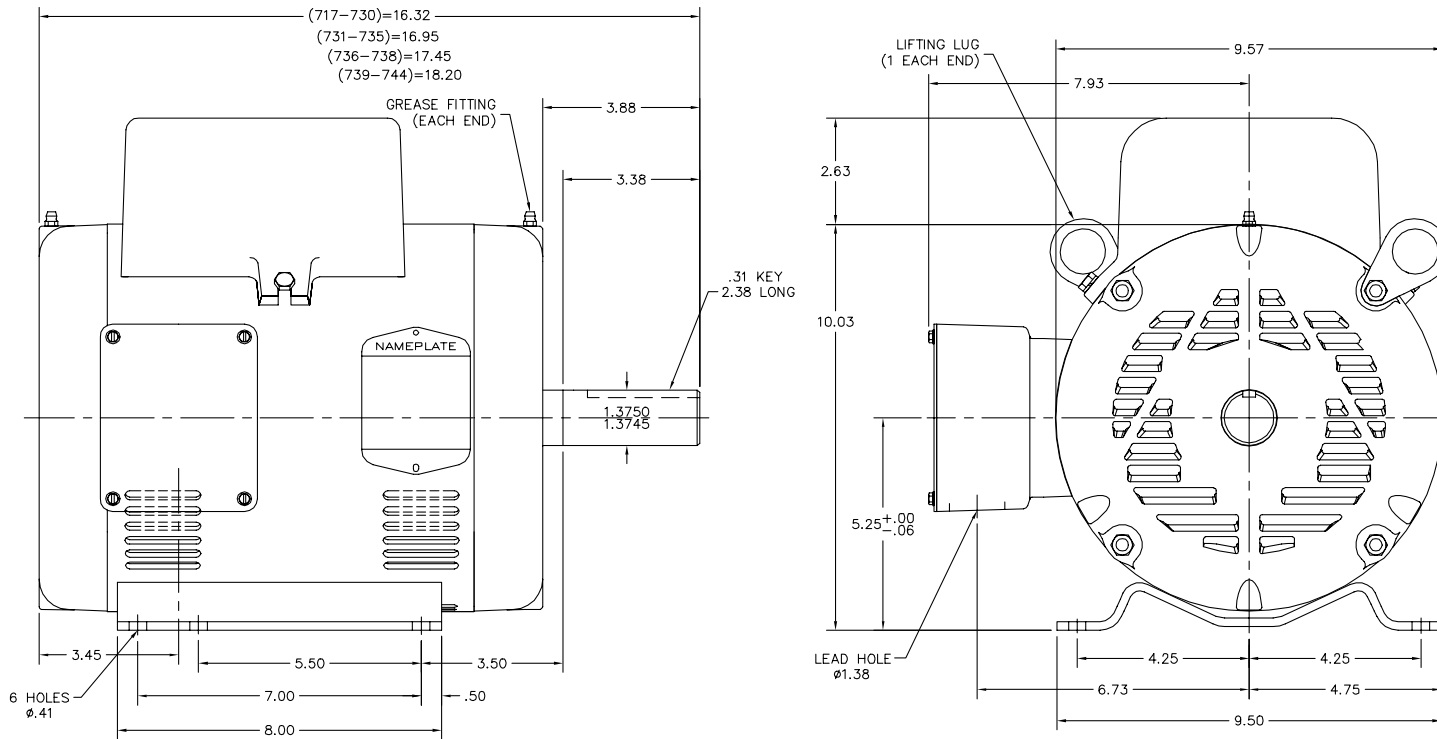
Load Characteristics 220 V, 50 Hz, 5 HP

% of Rated Load	25	50	75	100	125	150
Power Factor	74	88	92	94	94	93
Efficiency	67.3	80.2	82.7	83	80.9	77.1
Speed	1492	1480	1469	1455	1439	1417
Line amperes	8.17	11.9	16.4	21.6	27.6	34.9

Performance Graph at 220V, 50Hz, 5.0HP Typical performance - Not guaranteed values



37LYK214



CUSTOMER IS RESPONSIBLE FOR DETERMINING THAT MOTOR PERFORMANCE IS SUITABLE IN THE APPLICATION.

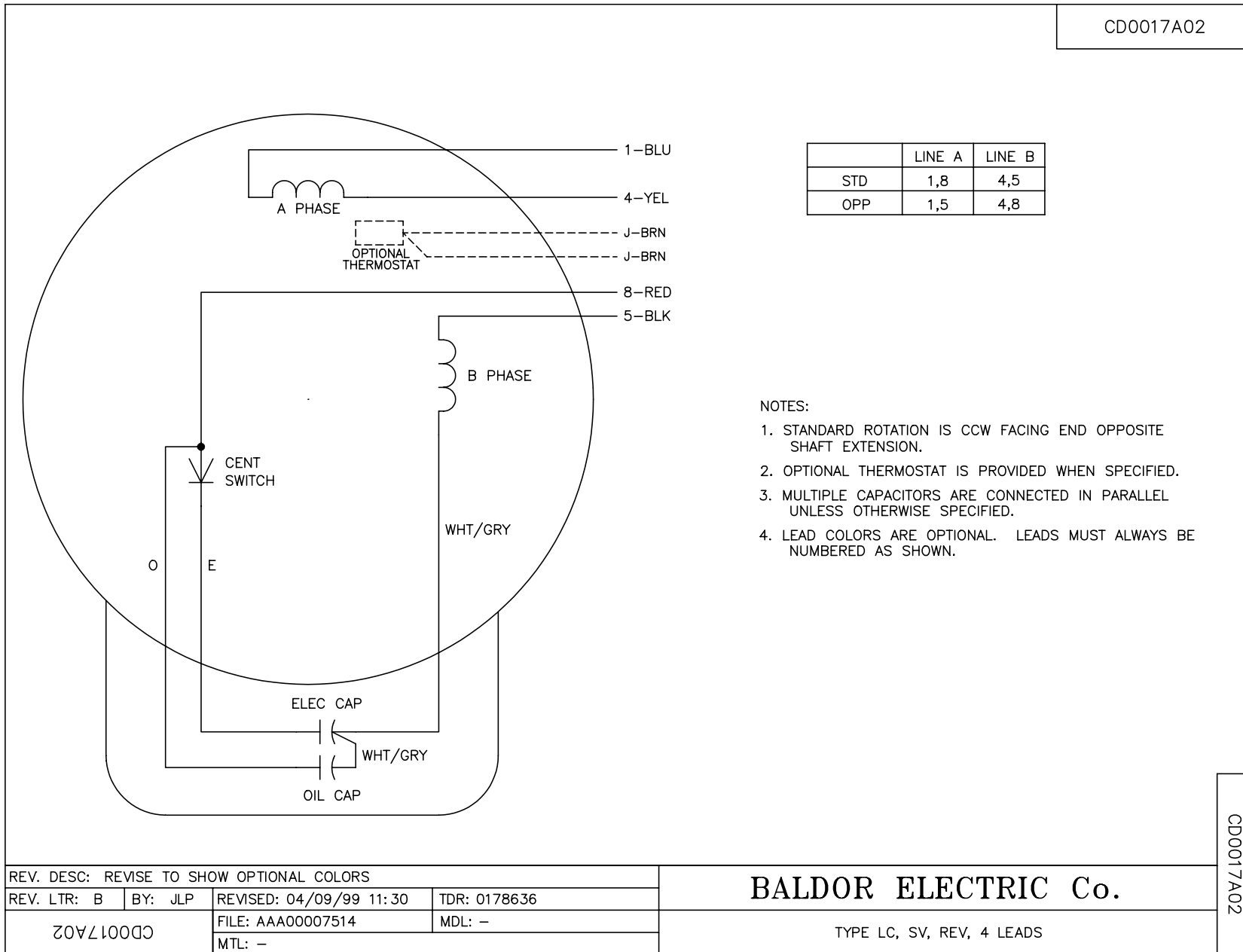
REV. DESC: RELEASE TO PRODUCTION		
REV. LTR: B	VERSION: 02	TDR: 000000395829
FILE: \AAA\00134\499	REVISED: 14:46:42 06/21/2006	BY: ENJASF0
MTL: -		

**BALDOR ELECTRIC Co.**

STD HORZ NEMA 213T-215T OPSB 37L-LC

37LYK214

CD0017A02



CD0017A02

REV. DESC: REVISE TO SHOW OPTIONAL COLORS			
REV. LTR: B	BY: JLP	REVISED: 04/09/99 11:30	TDR: 0178636
CD0017A02		FILE: AAA00007514	MDL: -
		MTL: -	

**BALDOR ELECTRIC Co.**

TYPE LC, SV, REV, 4 LEADS