

# **BALDOR® • RELIANCE**

## **Product Information Packet**

### **VM7010-I**

**.75//.5HP,1750//1460RPM,3PH,60//50HZ,56C**

Part Detail							
Revision:	Q	Status:	PRD/A	Change #:		Proprietary:	No
Type:	AC	Prod. Type:	3514M	Elec. Spec:	35WGP672	CD Diagram:	CD0005
Enclosure:	XPFC	Mfg Plant:		Mech. Spec:	35X748	Layout:	35LYX748
Frame:	56C	Mounting:	F1	Poles:	04	Created Date:	10-15-2008
Base:	N	Rotation:	R	Insulation:	F	Eff. Date:	10-27-2016
Leads:	9#18					Replaced By:	
Literature:		Elec. Diagram:					

Nameplate NP0977XPSL										
NO.						CC				
SER.							TEMP CODE	T3C		
SPEC.	35X748P672G1									
CAT.NO.	VM7010-I									
HP	.75//.5									
VOLTS	230/460//190/380									
AMPS	2.8/1.4//2.6/1.3									
RPM	1750//1460					MOTOR WEIGHT	48			
HERTZ	60//50		PH	3	CL	F	DE BRG	6205		
SER.F.	1.15		DES	B	CODE	M	ODE BRG	6203		
FRAME	56C		GREASE		POLYREX EM					
RATING	40C AMB-CONT									
USABLE AT 208V					NEMA-NOM-EFF	78.5		PF	66	
	NEMA MG-1 PT 5,IP55									

Parts List		
Part Number	Description	Quantity
SA177079	SA 35X748P672G1	1.000 EA
RA165132	RA 35X748P672G1	1.000 EA
35CB1005A01	CONDUIT BOX,MACH - GROUP "C" MTRS	1.000 EA
11XW1032G06	10-32 X .38, TAPTITE II, HEX WSHR SLTD U	1.000 EA
HW3001B01	BRASS CUP WASHER, FOR #8 SCREW	1.000 EA
35EP3700B07	FR ENDPLATE, XPFC - GROUP C, W/ DRAIN	1.000 EA
HW4506A02	BREATHER/DRAIN-EXP PROOF-.125-27 NPTF AI	1.000 EA
HW3022E05	.125 DIA X .500 ROLLED SPRING PIN	1.000 EA
HW5100A03SP	WAVY WASHER (W1543-017)	1.000 EA
35EP1704A39	PUEP 205 BRG XP GRP C W/SLINGER, DRAIN	1.000 EA
HW4506A02	BREATHER/DRAIN-EXP PROOF-.125-27 NPTF AI	1.000 EA
HW3022E05	.125 DIA X .500 ROLLED SPRING PIN	1.000 EA
51XN1032A20	10-32 X 1 1/4 HX WS SL SR	2.000 EA
HW4001A01	1/4 HX SOC PIPE PLG (F/S) ALLOY STEEL W/	2.000 EA
60XN1032A07	10-32 X 1/2 TRUSS HEAD, TORX SERRATED ZN	2.000 EA
XY3118A12	5/16-18 HEX NUT DIRECTIONAL SERRATION	4.000 EA
35FH4005A01SP	IEC FH NO GREASER W/PRIMED	1.000 EA
51XW1032A06	10-32 X .38, TAPTITE II, HEX WSHR SLTD S	3.000 EA
35CB1501A01	CONDUIT BOX LID, MACH. - GROUP "C" MTRS	1.000 EA
RM1020A41	O-RING, -150 BUNA-N, .103 CS X 2.862 ID	1.000 EA
HA2071A02	SLINGER ALUM (AUTO)	1.000 EA
80XN1032A04	10-32 X 1/4 SET SCREW	1.000 EA
HW2501D13	KEY, 3/16 SQ X 1.375	1.000 EA
HA7000A04	KEY RETAINER 0.625 DIA SHAFTS	1.000 EA

<b>Parts List (continued)</b>		
<b>Part Number</b>	<b>Description</b>	<b>Quantity</b>
85XU0407S04	4X1/4 U DRIVE PIN STAINLESS	6.000 EA
LB1359F	ALUM XP CAUTION LABEL	1.000 EA
MJ1000A02	GREASE, POLYREX EM EXXON (USe 4824-15A)	0.050 LB
35FN3002A05	EXFN, PLASTIC, 6.376 OD, .638 ID	1.000 EA
MG1025G29	WILKOFASST, 789.229, DARK CHARCOAL GRAY	0.017 GA
HA3104A06	THRUBOLT 5/16-18 X 8.50 OHIO ROD	4.000 EA
LB1119N	WARNING LABEL	1.000 EA
LC0145B01	CONNECTION LABEL	1.000 EA
NP0977XPSL	SS XP UL CSA CC CL-I GP-C&D	1.000 EA
36PA1000	PKG GRP, PRINT PK1016A06	1.000 EA
MN416A01	TAG-INSTAL-MAINT no wire (1200/bx) 11/14	1.000 EA

**AC Induction Motor Performance Data**  
Record # 27933 - Preliminary Data Sheet

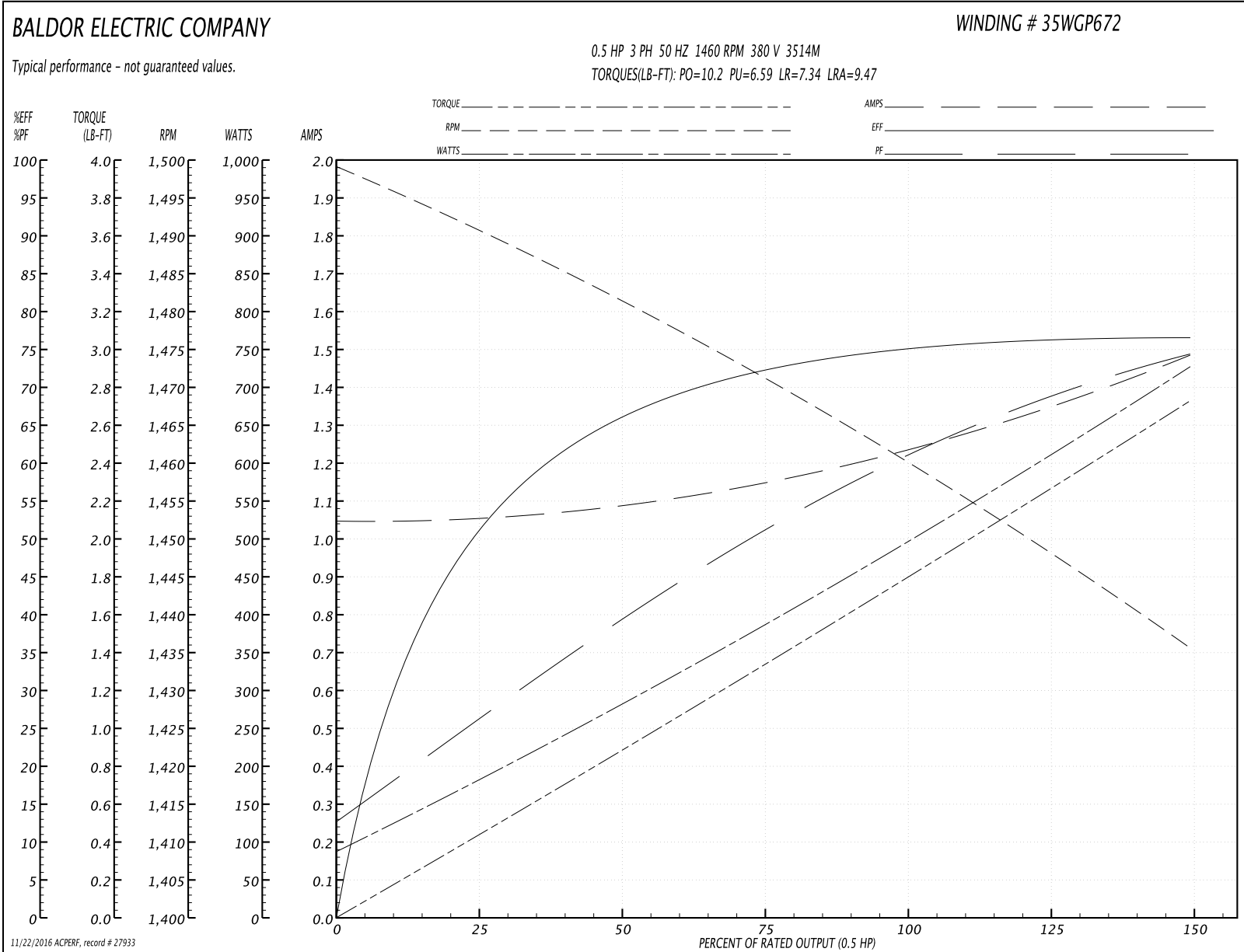
<b>Winding:</b> 35WGP672-R004	<b>Type:</b> 3514M	<b>Enclosure:</b> XPFC
-------------------------------	--------------------	------------------------

Nameplate Data				380 V, 50 Hz: High Voltage Connection	
Rated Output (HP)	.75//.5			Full Load Torque	1.81 LB-FT
Volts	230/460//190/380			Start Configuration	direct on line
Full Load Amps	2.8/1.4//2.6/1.3			Breakdown Torque	10.2 LB-FT
R.P.M.	1750//1460			Pull-up Torque	6.59 LB-FT
Hz	60//50	Phase	3	Locked-rotor Torque	7.34 LB-FT
NEMA Design Code	B	KVA Code	M	Starting Current	9.47 A
Service Factor (S.F.)	1.15			No-load Current	1.05 A
NEMA Nom. Eff.	78.5	Power Factor	66	Line-line Res. @ 25°C	21.9 Ω
Rating - Duty	40C AMB-CONT			Temp. Rise @ Rated Load	67°C
S.F. Amps				Temp. Rise @ S.F. Load	77°C
				Locked-rotor Power Factor	74
				Rotor inertia	0.0827 LB-FT <sup>2</sup>

Load Characteristics 380 V, 50 Hz, 0.5 HP

% of Rated Load	25	50	75	100	125	150	S.F.
Power Factor	26	40	51	61	69	75	66
Efficiency	51.1	65.8	71.9	75.7	76.2	76.5	76
Speed	1491	1481	1472	1460	1447	1436	1452
Line amperes	1.05	1.09	1.14	1.24	1.36	1.48	1.31

Performance Graph at 380V, 50Hz, 0.5HP Typical performance - Not guaranteed values



**AC Induction Motor Performance Data**

Record # 28095 - Typical performance - not guaranteed values

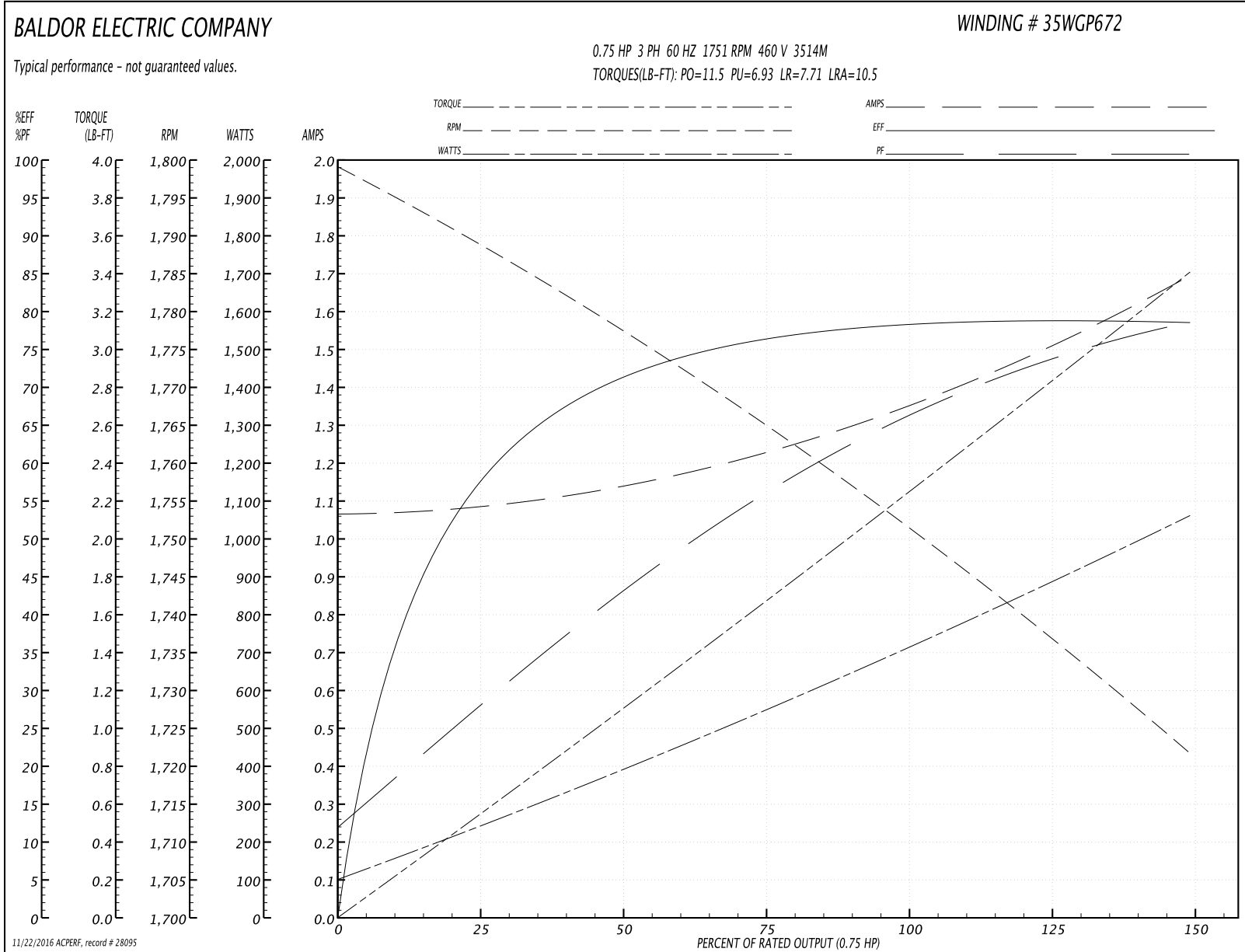
<b>Winding:</b> 35WGP672-R004	<b>Type:</b> 3514M	<b>Enclosure:</b> XPFC
-------------------------------	--------------------	------------------------

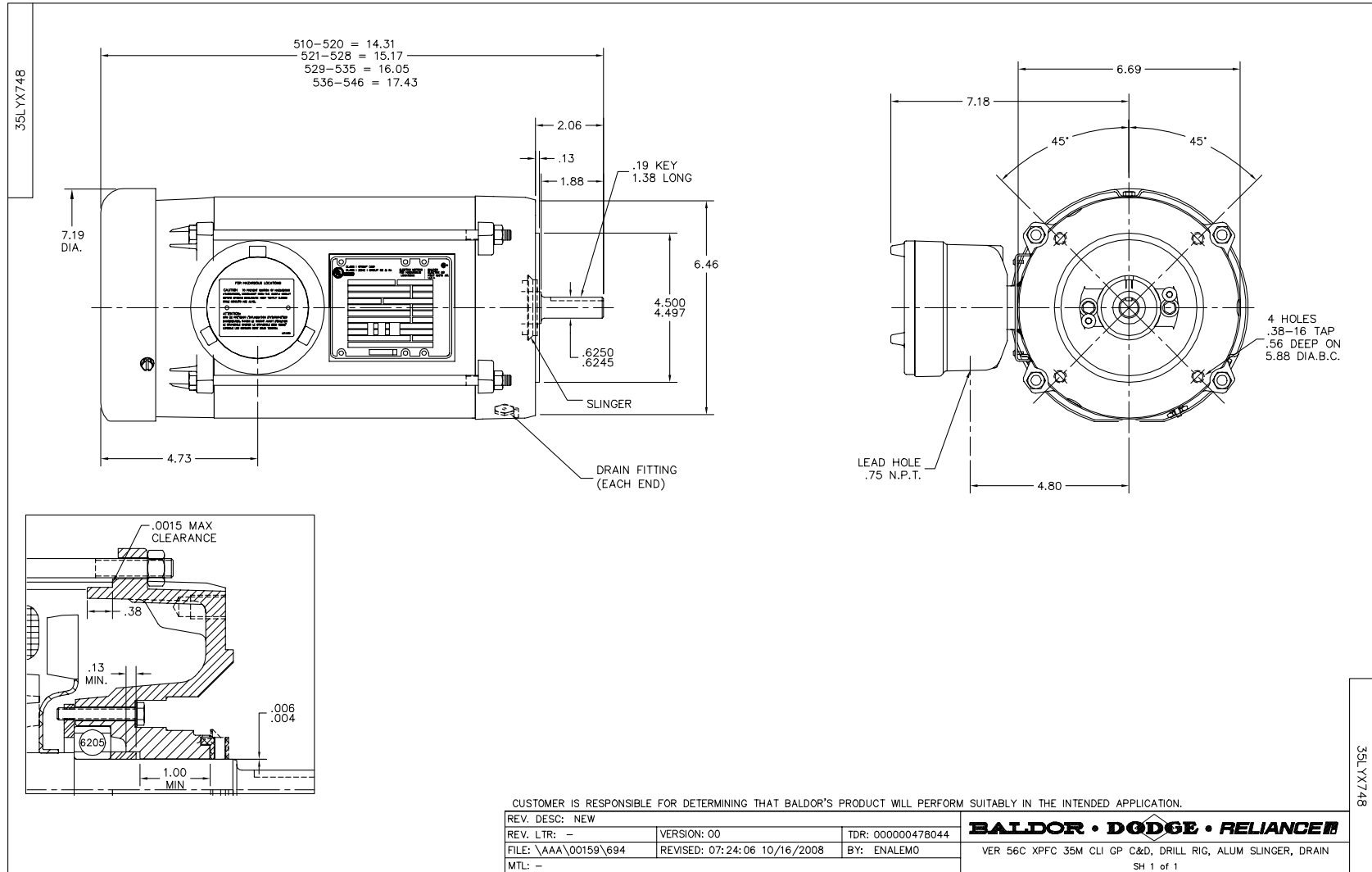
Nameplate Data				460 V, 60 Hz: High Voltage Connection	
Rated Output (HP)	.75//.5			Full Load Torque	2.26 LB-FT
Volts	230/460//190/380			Start Configuration	direct on line
Full Load Amps	2.8/1.4//2.6/1.3			Breakdown Torque	11.5 LB-FT
R.P.M.	1750//1460			Pull-up Torque	6.93 LB-FT
Hz	60//50	Phase	3	Locked-rotor Torque	7.71 LB-FT
NEMA Design Code	B	KVA Code	M	Starting Current	10.5 A
Service Factor (S.F.)	1.15			No-load Current	1.07 A
NEMA Nom. Eff.	78.5	Power Factor	66	Line-line Res. @ 25°C	21.9 Ω
Rating - Duty	40C AMB-CONT			Temp. Rise @ Rated Load	39°C
S.F. Amps				Temp. Rise @ S.F. Load	45°C
				Locked-rotor Power Factor	68
				Rotor inertia	0.0827 LB-FT <sup>2</sup>

Load Characteristics 460 V, 60 Hz, 0.75 HP

% of Rated Load	25	50	75	100	125	150	S.F.
Power Factor	28	44	56	66	74	79	71
Efficiency	57.4	71	76.2	78.7	78.8	78.5	78.8
Speed	1789	1777	1766	1751	1736	1722	1742
Line amperes	1.08	1.14	1.22	1.36	1.52	1.69	1.46

Performance Graph at 460V, 60Hz, 0.75HP Typical performance - Not guaranteed values

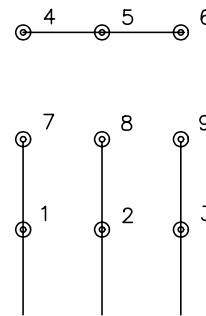




CD0005

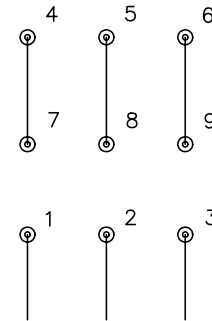


LOW VOLTAGE  
(2Y)



LINE

HIGH VOLTAGE  
(1Y)



LINE

NOTES:

1. INTERCHANGE ANY TWO LINE LEADS TO REVERSE ROTATION.
2. OPTIONAL THERMOSTATS ARE PROVIDED WHEN SPECIFIED.
3. ACTUAL NUMBER OF INTERNAL PARALLEL CIRCUITS MAY BE A MULTIPLE OF THOSE SHOWN ABOVE.
4. LEAD COLORS ARE OPTIONAL. LEADS MUST ALWAYS BE NUMBERED AS SHOWN.

REV. DESC: REVISE TO SHOW OPTIONAL COLORS			
REV. LTR: E	BY: JLP	REVISED: 01/19/99 10:15	TDR: 0171435
90000		FILE: AAA00005140	MDL: -
		MTL: -	

**BALDOR ELECTRIC Co.**

3PH, DV, 9 LEADS

CD0005