

# **BALDOR® • RELIANCE**

## **Product Information Packet**

### **VNM3538**

**.5HP, 1725RPM, 3PH, 60HZ, 56C, 3416M, TENV, F1**

Part Detail							
Revision:	T	Status:	PRD/A	Change #:		Proprietary:	No
Type:	AC	Prod. Type:	3416M	Elec. Spec:	34WG0872	CD Diagram:	CD0005
Enclosure:	TENV	Mfg Plant:		Mech. Spec:	34K013	Layout:	34LYK013
Frame:	56C	Mounting:	F1	Poles:	04	Created Date:	
Base:	N	Rotation:	R	Insulation:	F	Eff. Date:	03-02-2016
Leads:	9#18					Replaced By:	
Literature:		Elec. Diagram:					

Nameplate NP1256L										
CAT.NO.	VNM3538									
SPEC.	34K13-872									
HP	.5									
VOLTS	208-230/460									
AMP	2.1-2/1									
RPM	1725									
FRAME	56C				HZ	60			PH	3
SER.F.	1.00			CODE	L	DES	B		CLASS	F
NEMA-NOM-EFF	74			PF	63					
RATING	40C AMB-CONT									
CC									USABLE AT 208V	2.1
DE	6203				ODE	6203				
ENCL	TENV			SN						

Parts List		
Part Number	Description	Quantity
SA008079	SA 34K13-872	1.000 EA
RA004526	RA 34K13-872	1.000 EA
NS2512A01	INSULATOR, CONDUIT BOX X	1.000 EA
34CB3002A	CB CAST W/.88 DIA HOLE	1.000 EA
34GS1029A01	GASKET, CONDUIT BOX	1.000 EA
51XB1016A07	10-16 X 7/16 HXWSSLD SERTYB	2.000 EA
11XW1032G06	10-32 X .38, TAPTITE II, HEX WSHR SLTD U	1.000 EA
34EP3100A03SP	FR ENDPLATE, MACH	1.000 EA
HW5100A03SP	WAVY WASHER (W1543-017)	1.000 EA
34EP3300A24SP	PU ENDPLATE, MACH	1.000 EA
51XN1032A20	10-32 X 1 1/4 HX WS SL SR	2.000 EA
34CB4517	CB LID 4 MTG HOLES .22 DIA STAMPED, FOR	1.000 EA
34GS1031A01	GASKET, FLAT CONDUIT BOX LID (LEXIDE)	1.000 EA
51XW0832A07	8-32 X .44, TAPTITE II, HEX WSHR SLTD SE	4.000 EA
HW2501D13	KEY, 3/16 SQ X 1.375	1.000 EA
HA7000A04	KEY RETAINER 0.625 DIA SHAFTS	1.000 EA
MG1000G27	MED CHARCOAL METALLIC GREY 400-0096	0.014 GA
10XF0440S02	04-40 X 1/8 TYPE F HEX HD STAINLESS STIC	2.000 EA
HA3100A12	THRUBOLT 10-32 X 7.375	4.000 EA
LC0005E01	CONN.DIA./WARNING LABEL (LC0005/LB1119N)	1.000 EA
NP1256L	ALUM UL CSA CC	1.000 EA
34PA1002	PKG GRP, PRINT PK1001A01	1.000 EA
PK3083T	STYROFOAM PACKING CRADLE W/TAPE	1.000 EA

**AC Induction Motor Performance Data**

Record # 6601 - Typical performance - not guaranteed values

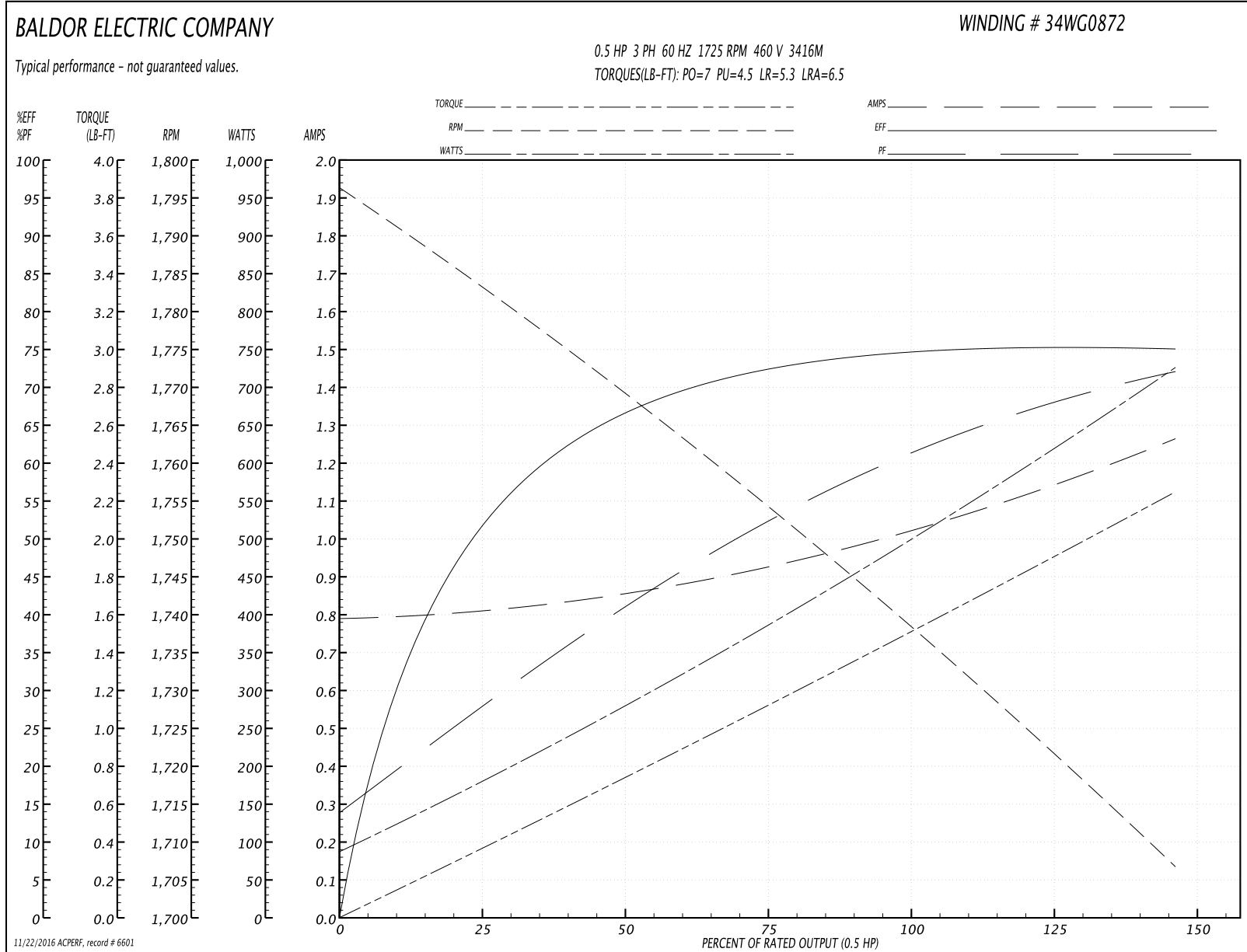
<b>Winding:</b> 34WG0872-R013	<b>Type:</b> 3416M	<b>Enclosure:</b> TENV
-------------------------------	--------------------	------------------------

Nameplate Data				460 V, 60 Hz: High Voltage Connection	
Rated Output (HP)	.5			Full Load Torque	1.5 LB-FT
Volts	208-230/460			Start Configuration	direct on line
Full Load Amps	2.1-2/1			Breakdown Torque	7 LB-FT
R.P.M.	1725			Pull-up Torque	4.5 LB-FT
Hz	60	Phase	3	Locked-rotor Torque	5.3 LB-FT
NEMA Design Code	B	KVA Code	L	Starting Current	6.5 A
Service Factor (S.F.)	1			No-load Current	0.8 A
NEMA Nom. Eff.	74	Power Factor	63	Line-line Res. @ 25°C	32 Ω
Rating - Duty	40C AMB-CONT			Temp. Rise @ Rated Load	94°C

Load Characteristics 460 V, 60 Hz, 0.5 HP

% of Rated Load	25	50	75	100	125	150
Power Factor	30	43	55	63	69	75
Efficiency	53.2	66.4	72.5	74.6	75.3	75.1
Speed	1782	1769	1754	1739	1724	1706
Line amperes	0.8	0.85	0.92	1.03	1.15	1.25

Performance Graph at 460V, 60Hz, 0.5HP Typical performance - Not guaranteed values



11/22/2016 ACPERF record # 6601

**AC Induction Motor Performance Data**  
Record # 46664 - Preliminary Data Sheet

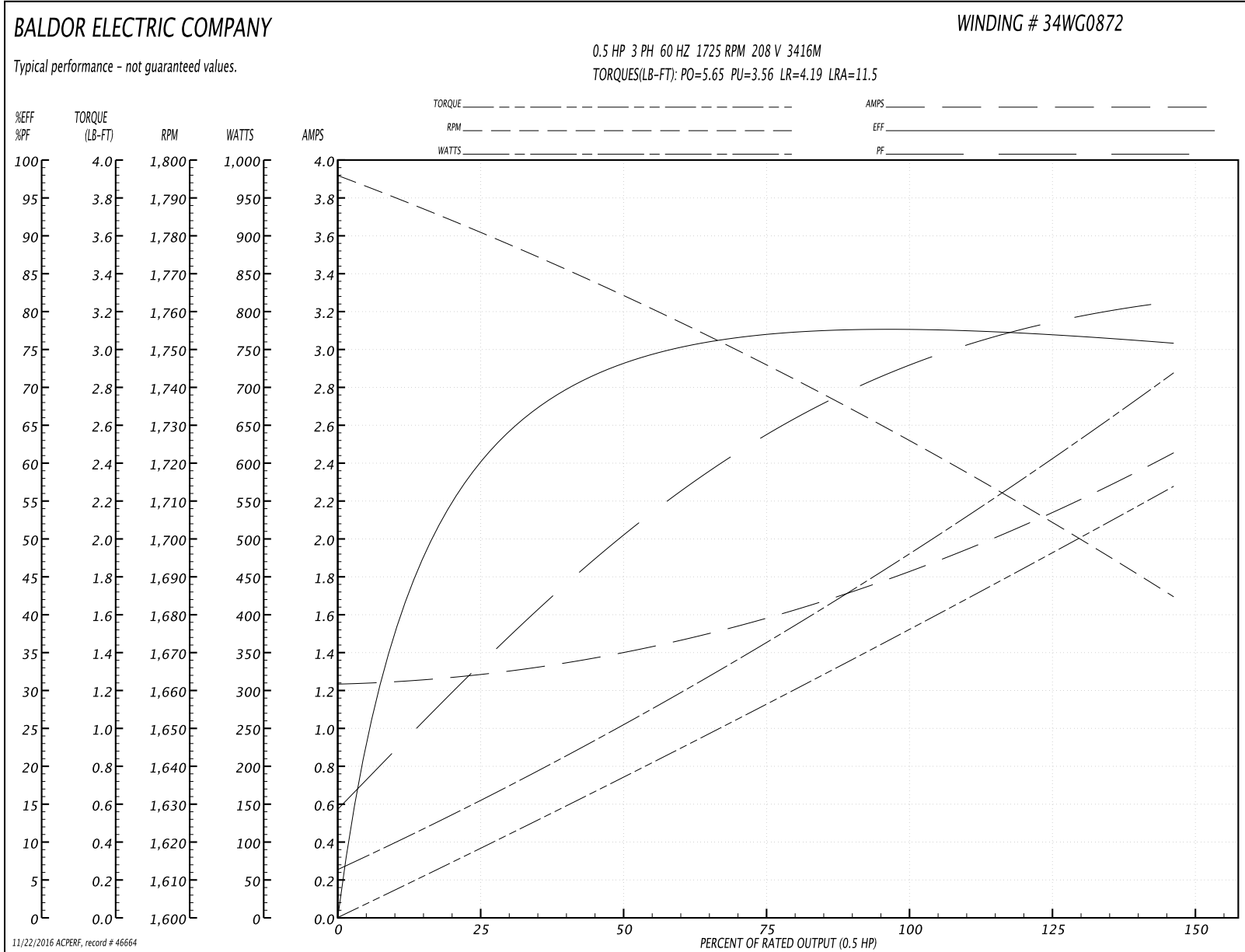
<b>Winding:</b> 34WG0872-R013	<b>Type:</b> 3416M	<b>Enclosure:</b> TENV
-------------------------------	--------------------	------------------------

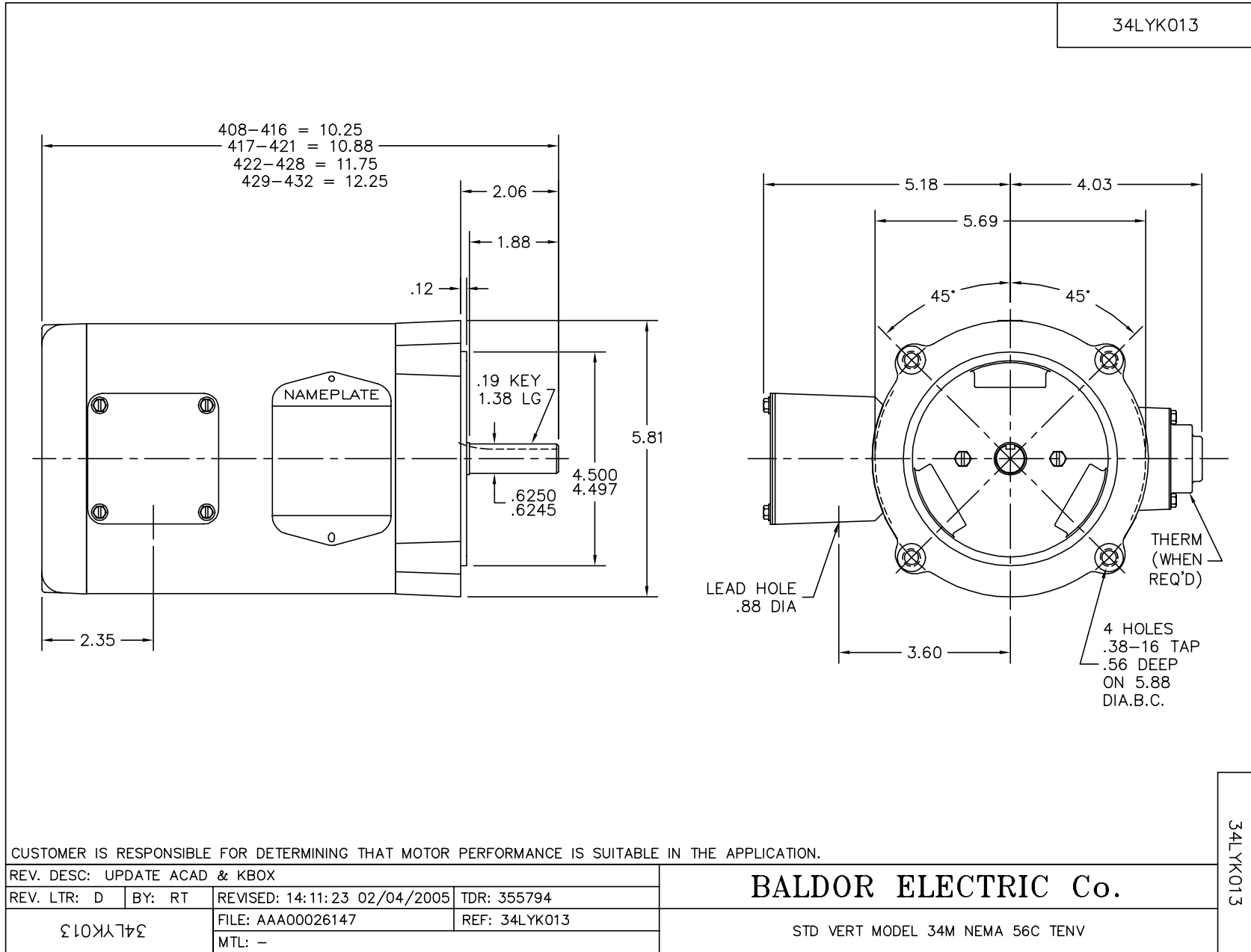
Nameplate Data				208 V, 60 Hz: Low Voltage Connection	
Rated Output (HP)	.5			Full Load Torque	1.51 LB-FT
Volts	208-230/460			Start Configuration	direct on line
Full Load Amps	2.1-2/1			Breakdown Torque	5.65 LB-FT
R.P.M.	1725			Pull-up Torque	3.56 LB-FT
Hz	60	Phase	3	Locked-rotor Torque	4.19 LB-FT
NEMA Design Code	B	KVA Code	L	Starting Current	11.5 A
Service Factor (S.F.)	1			No-load Current	1.25 A
NEMA Nom. Eff.	74	Power Factor	63	Line-line Res. @ 25°C	8.35 Ω
Rating - Duty	40C AMB-CONT			Temp. Rise @ Rated Load	
				Locked-rotor Power Factor	65
				Rotor inertia	0.0381 LB-FT <sup>2</sup>

**Load Characteristics 208 V, 60 Hz, 0.5 HP**

% of Rated Load	25	50	75	100	125	150
Power Factor	33	52	64	72	77	82
Efficiency	61.8	72.7	77	77.7	77	75.9
Speed	1779	1764	1746	1727	1707	1684
Line amperes	1.27	1.39	1.57	1.84	2.14	2.43

Performance Graph at 208V, 60Hz, 0.5HP Typical performance - Not guaranteed values





CD0005

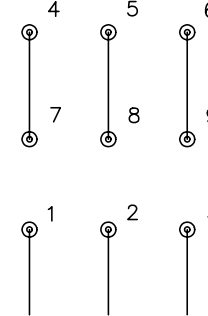


LOW VOLTAGE  
(2Y)



LINE

HIGH VOLTAGE  
(1Y)



LINE

NOTES:

1. INTERCHANGE ANY TWO LINE LEADS TO REVERSE ROTATION.
2. OPTIONAL THERMOSTATS ARE PROVIDED WHEN SPECIFIED.
3. ACTUAL NUMBER OF INTERNAL PARALLEL CIRCUITS MAY BE A MULTIPLE OF THOSE SHOWN ABOVE.
4. LEAD COLORS ARE OPTIONAL. LEADS MUST ALWAYS BE NUMBERED AS SHOWN.

REV. DESC: REVISE TO SHOW OPTIONAL COLORS			
REV. LTR: E	BY: JLP	REVISED: 01/19/99 10:15	TDR: 0171435
9000D		FILE: AAA00005140	MDL: -
		MTL: -	

**BALDOR ELECTRIC Co.**

3PH, DV, 9 LEADS

CD0005