



CHUGGER PUMP X-Dry Tri Clover Models
FDA Approved Carbon Bearing Material w/ Run Dry Protection!

CHUGGER PUMP® is a home brew beer pump designed to transfer hot and cold liquids between brewing vessels. It is **NOT** a self-priming pump - **DO NOT RUN DRY!**

Model	Construction	Max Flow	Max Head	Port Sizes	Voltage	Max Temp	HP
TRI-XCPSS-IN-1	Stainless Steel	7 GPM	18 Feet	1 1/2" Tri-Clamp	115v	250° F	1/20
TRI-XCPSS-IN-1	Stainless Steel	7 GPM	18 Feet	1 1/2" Tri-Clamp	115v	250° F	1/20

Installation

The Chugger Pump is shipped ready for installation. Directional arrows on the pump head show fluid direction through the pump. The four screws on the pump head may be removed and the pump head can be rotated as required to fit your piping system.

- The motor should be oiled yearly with 4-5 drops SAE20 weight non-detergent oil, do not over oil.
- Follow all local electrical and safety codes and always disconnect power before performing work on or near the pump motor.

Note: Impeller is made from FDA Ryton/Teflon and Stainless Steel. These pumps must be cleaned and sanitized prior to use.

Additional Information

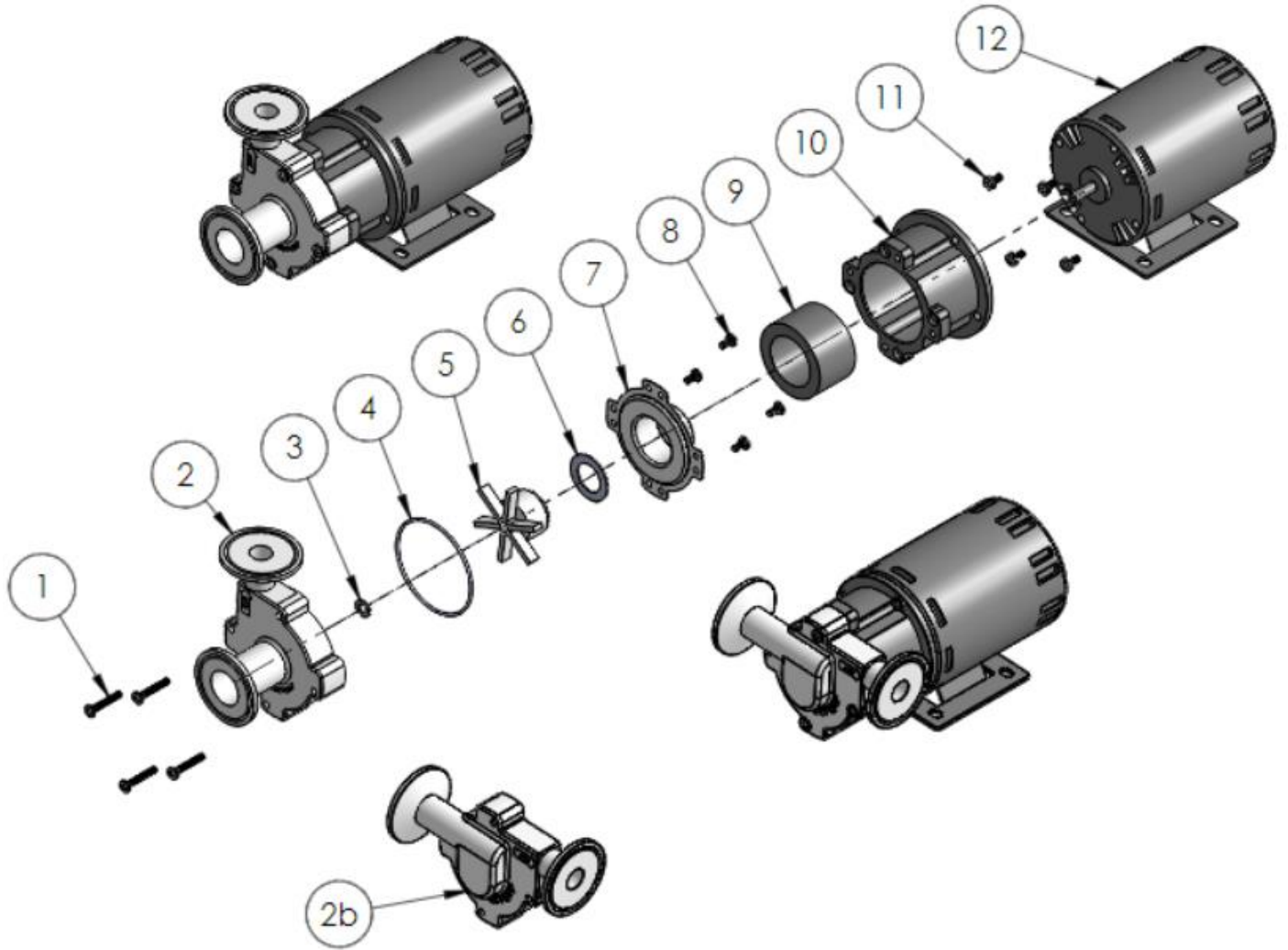
- FDA Approved Run Dry Carbon Bearing
- Electrical: 50hz / 60hz
- Motor Amps: 1.7
- Pump & Motor Amps: 1.9
- 3500 RPM Motor
- 55" Cord w/plug (230v **No Plug**)
- Weight: 7 lbs.
- Materials are Food Grade Compliant
- Non Submersible
- Components are UL Recognized
- Molded Tri Clamp Connections



The ETL Listed Mark indicates to distributors, retailers and customers that your product has been tested by Intertek and found in compliance with accepted national standards. Click [here](#) for more information.

Exploded View Parts Breakdown

TRI-XCPSS-CI-1 (115V) Center & TRI-XCPSS-IN-1 (115V) Inline Models



Item No.	Description	Part Number	Qty
1	Housing Screw (4)	CP-21	4
2	SS Center Inlet Head	TC-22-CI	1
2b	SS Inline Head	TC-22-IN	1
3	Small Thrust Washer (Teflon)	CP-24-1	1
4	Housing O-Ring (Silicone)	CP-23	1
5	Impeller w/Non-Replaceable Bearing	XCP-25	1
6	Large Thrust Washer (Teflon)	CP-24-2	1
7	SS Rear Housing	CP-26	1
8	Rear Housing Screw (4)	CP-30	4
9	Drive Magnet	CP-27	1
10	Motor Bracket	CP-28	1
11	Motor Screw w/ Washer (4)	CP-31	4
12	115 Volt Motor	CP-29-115	1
12	230 Volt Motor	CP-29-230	1

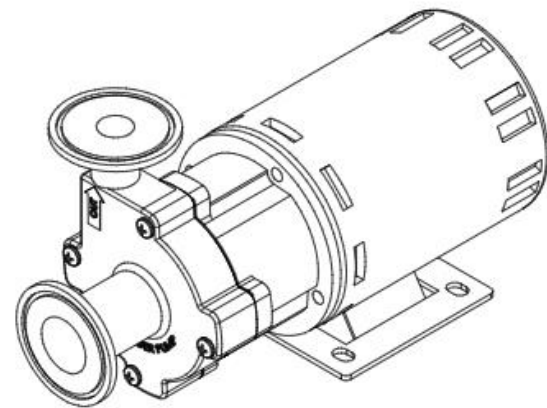
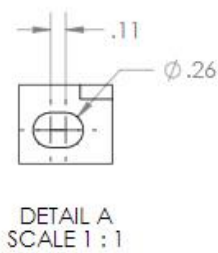
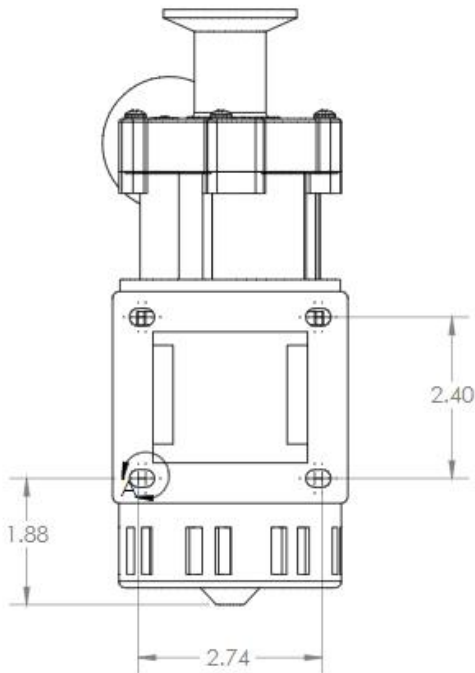
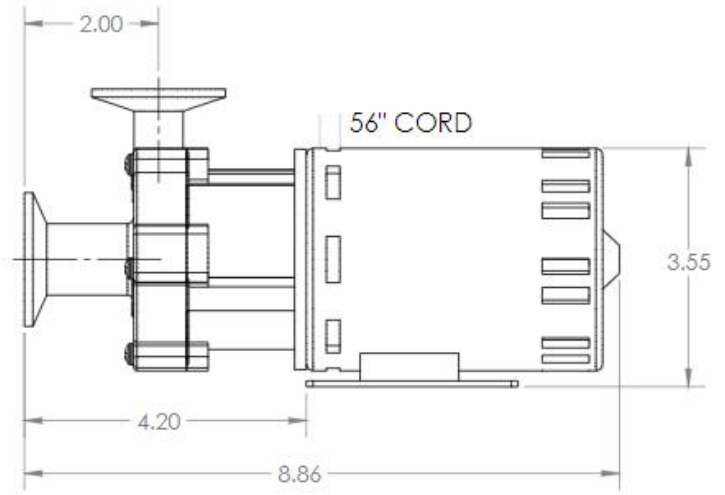
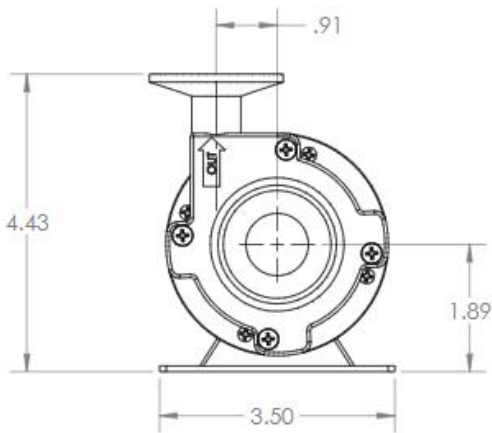
Repair Kits Available

- **Repair Kit – XCP-RPK**
 - Includes: (1) O-Ring: CP-23, (1) Impeller: XCP-25, (1) Large Thrust Washer: CP-24-2, (1) Small Thrust Washer: CP-24-1

Dimensions

TRI-XCPSS-IN

Tri Clover X-Dry Model with 1 1/2" Molded Tri-Clamp Fittings & Run Dry Protection



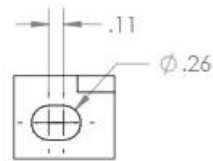
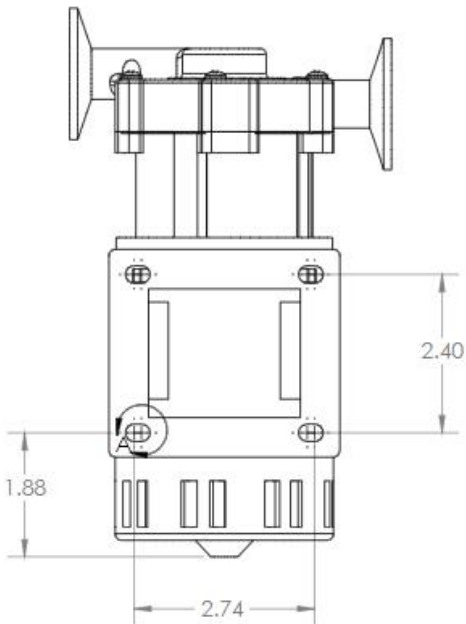
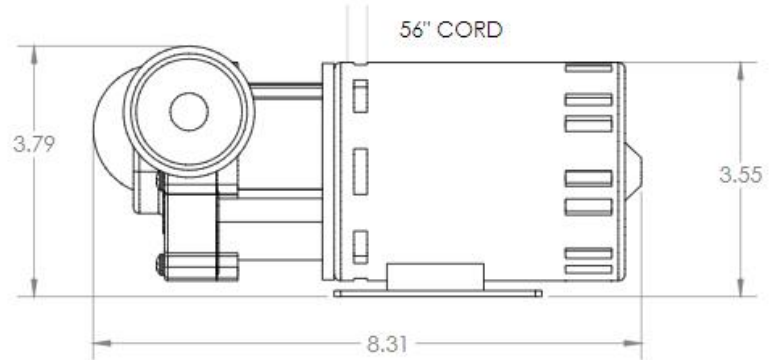
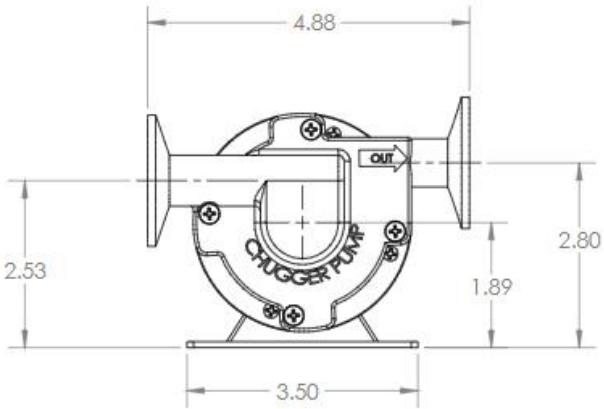
3D VIEW

Notes: 55" Cord on right side of pump looking from the rear. All measurements in inches.

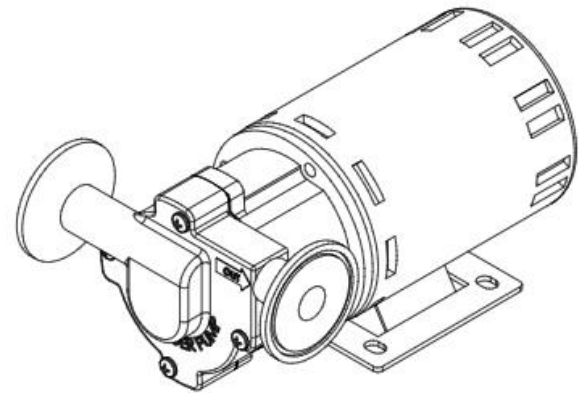
Dimensions

TRI-XCPSS-CI

Tri Clover X-Dry Model with 1 1/2" Molded Tri-Clamp Fittings & Run Dry Protection



DETAIL A
SCALE 1:1



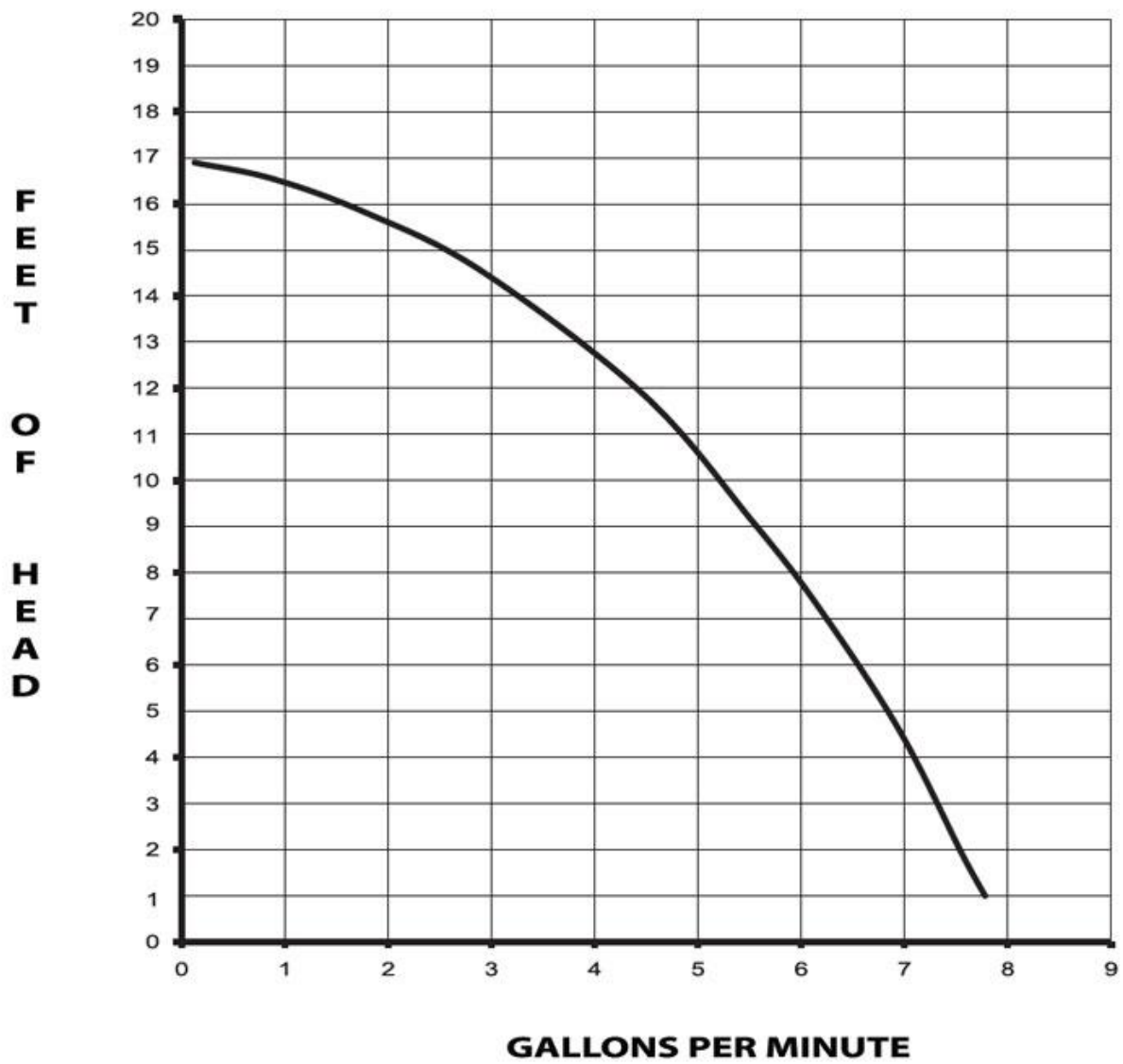
3D VIEW

Notes: 55" Cord on right side of pump looking from the rear. All measurements in inches.

Pump Curve



Models: TRI-XCPSS-IN & TRI-XCPSS-CI



Limited Warranty

Chugger Pumps are warranted only against defects in workmanship for a period of 6 months from the date of purchase. DO NOT RUN THE PUMP DRY, it will not be covered under warranty.

A Squealing sound is a warning you are running the pump with no fluid! Power Off Immediately!

Do not plumb inlet tubing or connections with less than ½" full port fittings. This will result in cavitation and problems with your pump!

Warning

This pump has been evaluated for use with water only.

Risk of electric shock: This pump is supplied with a grounding conductor and grounding-type attachment plug. To reduce the risk of electric shock, be certain that it is connected to a properly grounded, grounding-type receptacle.



<http://www.chuggerPumps.com>
Info@ChuggerPumps.com