

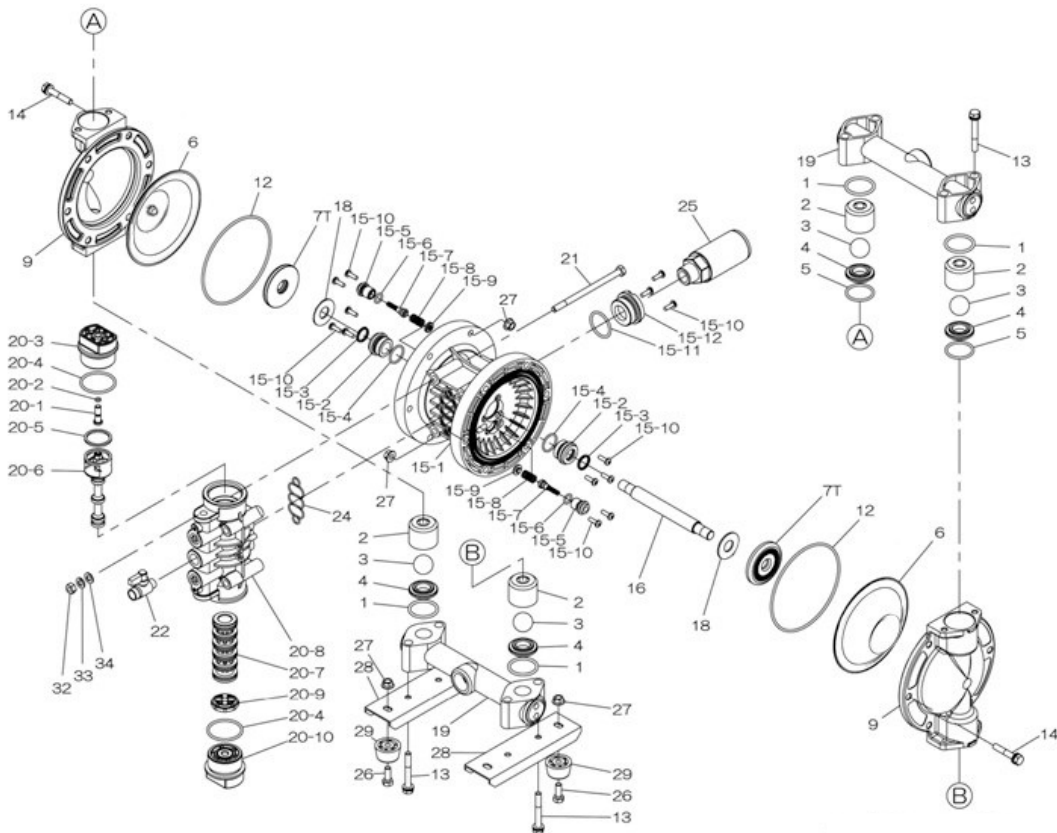
EXPLODED VIEW & PARTS LISTING

Model: NDP-20BAU-PP

Model #: 854063-U

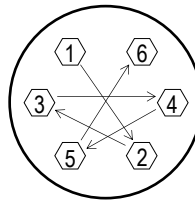


Air Operated Double Diaphragm Pump



Air Operated Double Diaphragm Pump

REF. No.	PART No.	DESCRIPTION	QTY.	REORDER
1	643036	O-RING	4	
2	711700	BALL GUIDE	4	
3	770736	BALL	4	
4	590086	VALVE SEAT	4	
5	771131	O-RING	2	
6	832549	DIAPHRAGM	2	
7T	772562	CENTER DISK (INNER)	2	
9	711686	OUT CHAMBER	2	
12	640151	O-RING	2	
13	686359	BOLT w/WASHER	8	
14	686357	BOLT	12	
15	804603	BODY ASSY.	1	
15-1	772928	BODY 20-PP	1	
15-2	780326	THROAT BEARING	2	
15-3	685414	V-PACKING	2	
15-4	685276	O-RING	2	
15-5	772932	VALVE SEAT	2	
15-6	640009	O-RING	2	
15-7	802360	PILOT VALVE ASSY.	2	
15-8	708666	SPRING	2	
15-9	772948	SPRING SEAT	2	
15-10	686030	TAPPING SCREW	13	
15-11	640132	O-RING	1	
15-12	772933	BUSHING	1	
16	714674	CENTER ROD	1	
18	771054	CUSHION	2	
19	831280	MANIFOLD	2	
20	804608	VALVE BODY ASSY.	1	
20-1	772991	RESET BUTTON	1	
20-2	640002	O-RING	1	
20-3	772946	CAP A	1	
20-4	640043	O-RING	2	
20-5	771241	PACKING	1	
20-6	802400	C-SPOOL ASSY.	1	
20-6-seal	771053	SEAL RING	5	
20-7	804609	SLEEVE ASSY.	1	
20-7-*1	686029	O-RING	6	
20-8	832903	VALVE BODY	1	
20-9	771914	CUSHION	1	
20-10	772947	CAP B	1	
21	686031	BOLT	6	
22	686968	BALL VALVE	1	
24	772848	GASKET	1	
25	804697	SILENCER	1	
26	611148	BOLT	4	
27	682276	NUT WITH FLANGE	16	
28	709157	PUMP BASE	2	
29	770551	CUSHION	4	
32	687229	NUT	4	
33	681300	SPRING WASHER	4	
34	631329	FLAT WASHER	4	
KIT	K20-MU-1	LIQUID END		
KIT	K225-AP	AIR MOTOR		



Tightening Torques:

- Out Chambers 10 ft-lbf {13 N-m}
- Manifold Retainer Bolts 15 ft-lbf {20 N-m}
- Air Valve Body Bolts 5.5 lbf-ft {7.5 N-m}

General Tools:

- Socket wrenches - 10mm, 12mm, 13mm, 17mm, 22mm
- Hexagonal box wrench - 5mm
- Open-end wrenches - 22mm

Special Tools (sold separately):

- Sleeve remover (713148).

Miscellaneous:

- Assembly Oil - turbine oil class 1 (equivalent to ISO VG32 grade)
- Urea grease grade (NLGI) No. 2
- Lubricants equivalent to (Loctite Anti-Seize 767)

Customer Notes	
Model #:	_____
Description:	_____
Serial #:	_____
Date Installed:	_____
Department Location:	_____
Tag/Project:	_____