

BALDOR® • **RELIANCE**

Product Information Packet

CL5004-I

.5HP, 1725RPM, 1PH, 60HZ, 56C, 3520L, XPFC, F1

Part Detail							
Revision:	H	Status:	PRD/A	Change #:		Proprietary:	No
Type:	AC	Prod. Type:	3520L	Elec. Spec:	35WGN406	CD Diagram:	CD0001
Enclosure:	XPFC	Mfg Plant:		Mech. Spec:	35X723	Layout:	35LYX723
Frame:	56C	Mounting:	F1	Poles:	04	Created Date:	09-17-2012
Base:	RG	Rotation:	R	Insulation:	F	Eff. Date:	08-31-2015
Leads:	6#18					Replaced By:	
Literature:		Elec. Diagram:					

Nameplate NP0977XPSL										
NO.						CC				
SER.							TEMP CODE		T3C	
SPEC.	35X723N406G1									
CAT.NO.	CL5004-I									
HP	.5									
VOLTS	115/208-230									
AMPS	7.4/3.5-3.7									
RPM	1725					MOTOR WEIGHT	43			
HERTZ	60		PH	1	CL	F	DE BRG	6205		
SER.F.	1.15		DES	N	CODE	M	ODE BRG	6203		
FRAME	56C		GREASE		POLYREX EM					
RATING	40C AMB-CONT									
USABLE AT 208V						NEMA-NOM-EFF	68		PF	65
	NEMA MG-1 PT 5,IP55									

Parts List		
Part Number	Description	Quantity
SA251231	SA 35X723N406G1	1.000 EA
RA238073	RA 35X723N406G1	1.000 EA
EC1189A02SP	61B2D120189NNBA ELEC CAP, 189-227MFD, 12	2.000 EA
35CB1005A01	CONDUIT BOX,MACH - GROUP "C" MTRS	1.000 EA
35EP3700B07	FR ENDPLATE, XPFC - GROUP C, W/ DRAIN	1.000 EA
HW4506A02	BREATHER/DRAIN-EXP PROOF-.125-27 NPTF AI	1.000 EA
HW3022E05	.125 DIA X .500 ROLLED SPRING PIN	1.000 EA
51XW0832A07	8-32 X .44, TAPTITE II, HEX WSHR SLTD SE	2.000 EA
HW5100A03SP	WAVY WASHER (W1543-017)	1.000 EA
35EP1704A39	PUEP 205 BRG XP GRP C W/SLINGER, DRAIN	1.000 EA
HW4506A02	BREATHER/DRAIN-EXP PROOF-.125-27 NPTF AI	1.000 EA
HW3022E05	.125 DIA X .500 ROLLED SPRING PIN	1.000 EA
51XN1032A20	10-32 X 1 1/4 HX WS SL SR	2.000 EA
HW4001A01	1/4 HX SOC PIPE PLG (F/S) ALLOY STEEL W/	2.000 EA
60XN1032A07	10-32 X 1/2 TRUSS HEAD, TORX SERRATED ZN	2.000 EA
XY3118A12	5/16-18 HEX NUT DIRECTIONAL SERRATION	4.000 EA
51XB1214A16	12-14X1.00 HXWSSLD SERTYB	1.000 EA
35FH4005A44	FH NO GREASER & SPL NOTCH @ 7	1.000 EA
51XW1032A06	10-32 X .38, TAPTITE II, HEX WSHR SLTD S	3.000 EA
35CB1501A01	CONDUIT BOX LID, MACH. - GROUP "C" MTRS	1.000 EA
RM1020A41	O-RING, -150 BUNA-N, .103 CS X 2.862 ID	1.000 EA
HA2071A02	SLINGER ALUM (AUTO)	1.000 EA
80XN1032A04	10-32 X 1/4 SET SCREW	1.000 EA
HW2501D13	KEY, 3/16 SQ X 1.375	1.000 EA

Parts List (continued)		
Part Number	Description	Quantity
HA7000A04	KEY RETAINER 0.625 DIA SHAFTS	1.000 EA
85XU0407S04	4X1/4 U DRIVE PIN STAINLESS	6.000 EA
LB1359F	ALUM XP CAUTION LABEL	1.000 EA
HA6003A52	CLAMP, CAPACITOR, WHITE ZINC PLATED	2.000 EA
51XW0832A07	8-32 X .44, TAPTITE II, HEX WSHR SLTD SE	2.000 EA
MJ1000A02	GREASE, POLYREX EM EXXON (USe 4824-15A)	0.050 LB
35FN3002A05	EXFN, PLASTIC, 6.376 OD, .638 ID	1.000 EA
MG1025G29	WILKOFASST, 789.229, DARK CHARCOAL GRAY	0.017 GA
SP5055A11	MODEL 35 TYPE L STATIONARY SWITCH WITH L	1.000 EA
HA3104A06	THRUBOLT 5/16-18 X 8.50 OHIO ROD	4.000 EA
LB1119N	WARNING LABEL	1.000 EA
LC0081	CONNECTION LABEL X	1.000 EA
NP0977XPSL	SS XP UL CSA CC CL-I GP-C&D	1.000 EA
36PA1000	PKG GRP, PRINT PK1016A06	1.000 EA
MN416A01	TAG-INSTAL-MAINT no wire (1200/bx) 11/14	1.000 EA

AC Induction Motor Performance Data

Record # 39783 - Typical performance - not guaranteed values

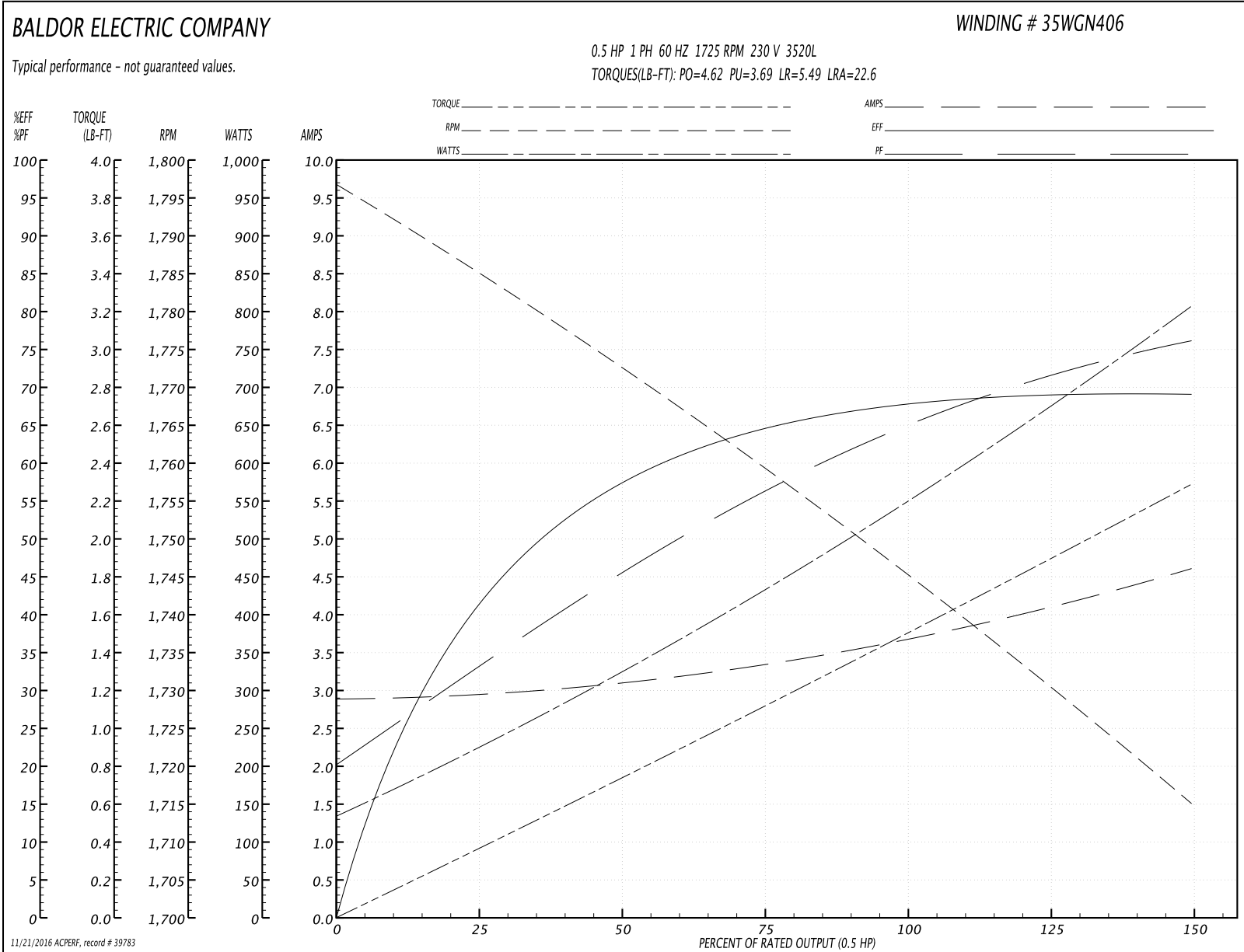
Winding: 35WGN406-R002	Type: 3520L	Enclosure: XPFC
-------------------------------	--------------------	------------------------

Nameplate Data				230 V, 60 Hz: High Voltage Connection	
Rated Output (HP)	.5			Full Load Torque	1.51 LB-FT
Volts	115/208-230			Start Configuration	direct on line
Full Load Amps	7.4/3.5-3.7			Breakdown Torque	4.62 LB-FT
R.P.M.	1725			Pull-up Torque	3.69 LB-FT
Hz	60	Phase	1	Locked-rotor Torque	5.49 LB-FT
NEMA Design Code	N	KVA Code	M	Starting Current	22.6 A
Service Factor (S.F.)	1.15			No-load Current	2.89 A
NEMA Nom. Eff.	68	Power Factor	65	Line-line Res. @ 25°C	4.0781 Ω A Ph 2.4038 Ω B Ph
Rating - Duty	40C AMB-CONT			Temp. Rise @ Rated Load	67°C
S.F. Amps				Temp. Rise @ S.F. Load	75°C

Load Characteristics 230 V, 60 Hz, 0.5 HP

% of Rated Load	25	50	75	100	125	150	S.F.
Power Factor	34	46	56	65	71	76	69
Efficiency	41.6	57.1	64.6	68	69	69	68.6
Speed	1783.2	1772	1759.8	1745.9	1730.5	1714.5	1737
Line amperes	2.95	3.09	3.35	3.69	4.1	4.61	3.94

Performance Graph at 230V, 60Hz, 0.5HP Typical performance - Not guaranteed values



11/21/2016 ACPERF: record # 39783

AC Induction Motor Performance Data
Record # 44101 - Typical performance - not guaranteed values

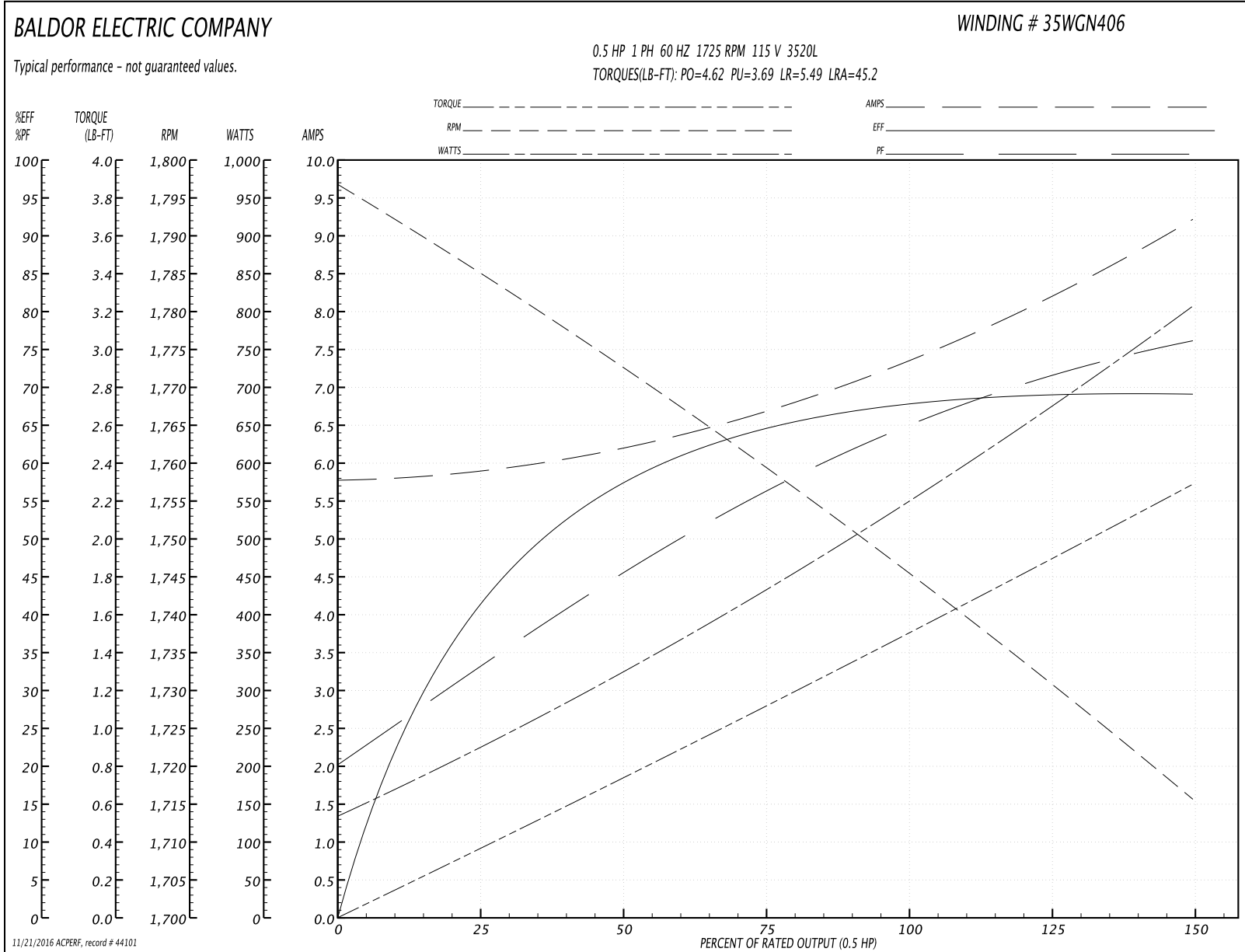
Winding: 35WGN406-R002	Type: 3520L	Enclosure: XPFC
-------------------------------	--------------------	------------------------

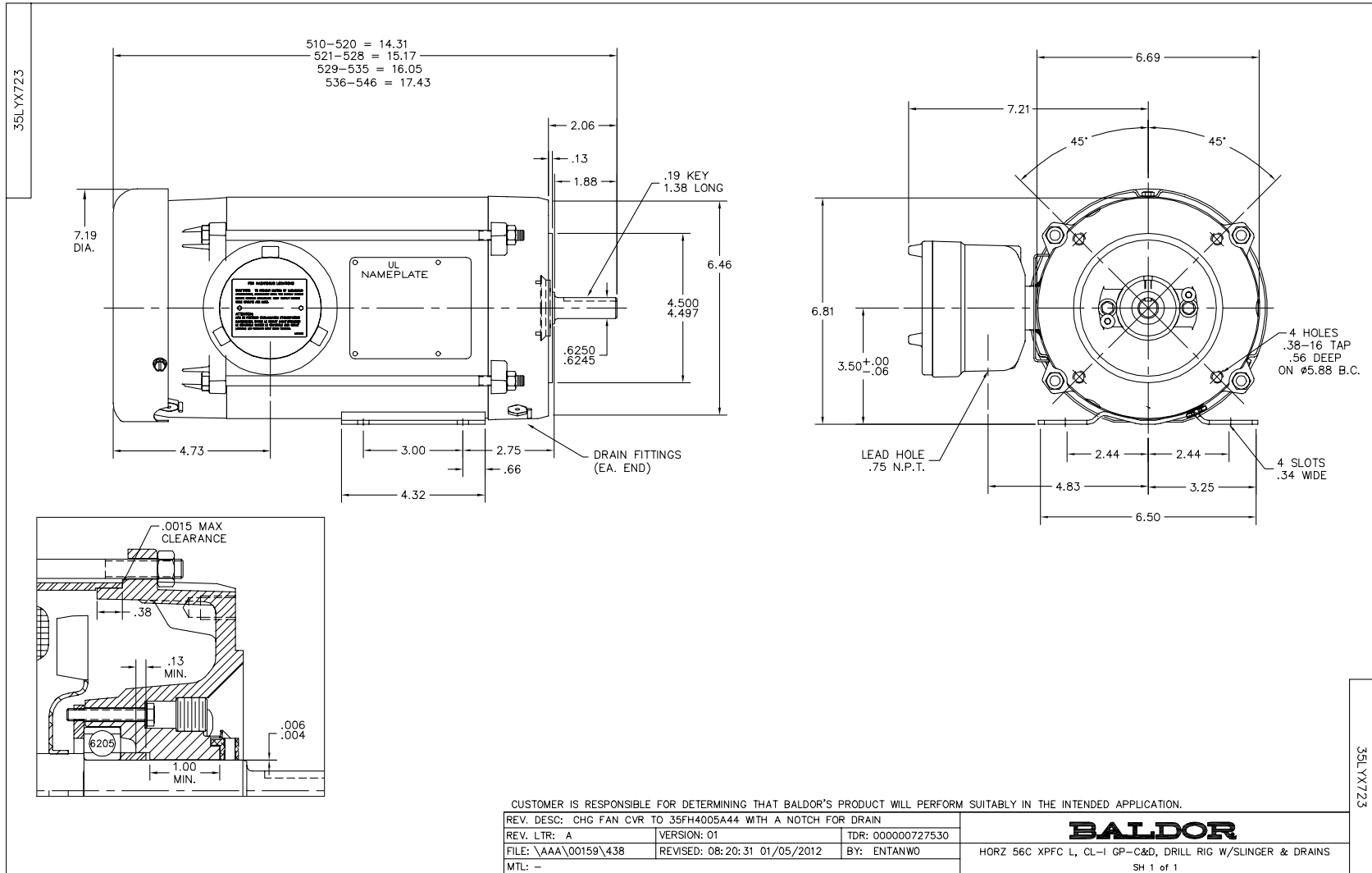
Nameplate Data				115 V, 60 Hz: Low Voltage Connection	
Rated Output (HP)	.5			Full Load Torque	1.51 LB-FT
Volts	115/208-230			Start Configuration	direct on line
Full Load Amps	7.4/3.5-3.7			Breakdown Torque	4.62 LB-FT
R.P.M.	1725			Pull-up Torque	3.69 LB-FT
Hz	60	Phase	1	Locked-rotor Torque	5.49 LB-FT
NEMA Design Code	N	KVA Code	M	Starting Current	45.2 A
Service Factor (S.F.)	1.15			No-load Current	5.78 A
NEMA Nom. Eff.	68	Power Factor	65	Line-line Res. @ 25°C	1.06 Ω A Ph 2.39 Ω B Ph
Rating - Duty	40C AMB-CONT			Temp. Rise @ Rated Load	67°C
S.F. Amps				Temp. Rise @ S.F. Load	73°C
				Rotor inertia	0.119 LB-FT ²

Load Characteristics 115 V, 60 Hz, 0.5 HP

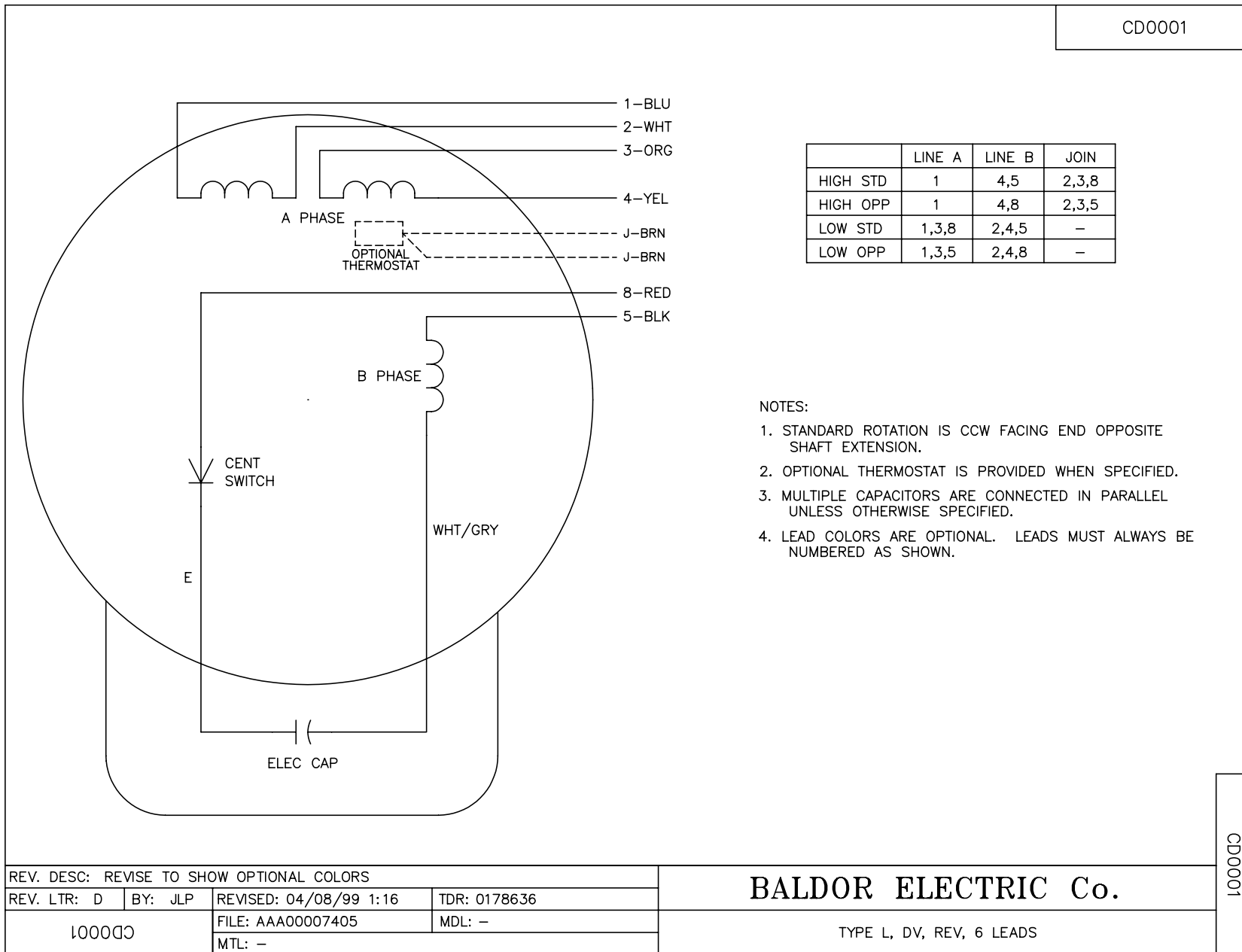
% of Rated Load	25	50	75	100	125	150	S.F.
Power Factor	34	46	56	65	72	76	69
Efficiency	41.5	57.1	64.8	68	69.2	69	68.7
Speed	1783	1772	1760	1746	1731	1715	1737
Line amperes	5.9	6.18	6.7	7.38	8.2	9.22	7.87

Performance Graph at 115V, 60Hz, 0.5HP Typical performance - Not guaranteed values





CD0001



NOTES:

1. STANDARD ROTATION IS CCW FACING END OPPOSITE SHAFT EXTENSION.
2. OPTIONAL THERMOSTAT IS PROVIDED WHEN SPECIFIED.
3. MULTIPLE CAPACITORS ARE CONNECTED IN PARALLEL UNLESS OTHERWISE SPECIFIED.
4. LEAD COLORS ARE OPTIONAL. LEADS MUST ALWAYS BE NUMBERED AS SHOWN.

CD0001

REV. DESC: REVISE TO SHOW OPTIONAL COLORS			
REV. LTR: D	BY: JLP	REVISED: 04/08/99 1:16	TDR: 0178636
100000		FILE: AAA00007405	MDL: -
		MTL: -	

BALDOR ELECTRIC Co.

TYPE L, DV, REV, 6 LEADS