

BALDOR® • **RELIANCE**

Product Information Packet

CWDL3504

.5HP, 1725RPM, 1PH, 60HZ, 56C, 3520L, TEFC, F1

| Part Detail | | | | | | | |
|-------------|------|----------------|-------|-------------|----------|---------------|------------|
| Revision: | L | Status: | PRD/A | Change #: | | Proprietary: | No |
| Type: | AC | Prod. Type: | 3520L | Elec. Spec: | 35WGN406 | CD Diagram: | CD0001 |
| Enclosure: | TEFC | Mfg Plant: | | Mech. Spec: | 35J306 | Layout: | 35LYJ306 |
| Frame: | 56C | Mounting: | F1 | Poles: | 04 | Created Date: | 01-30-2012 |
| Base: | RG | Rotation: | R | Insulation: | F | Eff. Date: | 02-23-2016 |
| Leads: | 6#18 | | | | | Replaced By: | |
| Literature: | | Elec. Diagram: | | | | | |

| Nameplate NP1496L | | | | | | | | | | |
|-------------------|--------------|--|------|----|-----|------|--|----------------|-----|---|
| CAT.NO. | CWDL3504 | | | | | | | | | |
| SPEC. | 35J306N406G1 | | | | | | | | | |
| HP | .5 | | | | | | | | | |
| VOLTS | 115/230 | | | | | | | | | |
| AMP | 7.4/3.7 | | | | | | | | | |
| RPM | 1725 | | | | | | | | | |
| FRAME | 56C | | | | HZ | 60 | | | PH | 1 |
| SER.F. | 1.25 | | CODE | M | DES | N | | CLASS | F | |
| NEMA-NOM-EFF | 68 | | PF | 65 | | | | | | |
| RATING | 40C AMB-CONT | | | | | | | | | |
| CC | | | | | | | | USABLE AT 208V | 4.1 | |
| DE | 6205 | | | | ODE | 6203 | | | | |
| ENCL | TEFC | | SN | | | | | | | |
| | SFA 8.2/4.1 | | | | | | | | | |

| Parts List | | |
|---------------|---|----------|
| Part Number | Description | Quantity |
| SA238011 | SA 35J306N406G1 | 1.000 EA |
| RA224939 | RA 35J306N406G1 | 1.000 EA |
| EC1400A03SP | ELEC CAP, 400-480 MFD, 125V, 1.81D X 3. | 1.000 EA |
| NS2512A01 | INSULATOR, CONDUIT BOX X | 1.000 EA |
| 35CB3008A01W | 35 CB .50 NPT @ 6, MACH WHITE EPOXY | 1.000 EA |
| 35GS1039 | 05 MOLDED GASKET W/LIP, 1.12 LEAD HOLE, | 1.000 EA |
| 51XB1016A08 | 10-16X 1/2HXWSSLD SERTYB | 2.000 EA |
| 11XW1032G06 | 10-32 X .38, TAPTITE II, HEX WSHR SLTD U | 1.000 EA |
| 35EP3100M87MW | FREP TEFC,"O" DRILLS,NO GRSSR, MACH.WHITE | 1.000 EA |
| HW4032A01 | BLACK DRAIN PLUG FOR WASH DOWN MOTORS | 3.000 EA |
| 51XW0832A07 | 8-32 X .44, TAPTITE II, HEX WSHR SLTD SE | 2.000 EA |
| NS2501A01 | INSULATOR, CAPACITOR | 1.000 EA |
| 35CB4802A02SP | CAPACITOR COVER, STAMPED X | 1.000 EA |
| 51XB1016A06 | 10-16X3/8 HXWSSLD SERTYB | 4.000 EA |
| HW5100A03SP | WAVY WASHER (W1543-017) | 1.000 EA |
| 35EP3300A48MW | SPL FACE MTD EP - 205 BRG - W/SEAL FOR W | 1.000 EA |
| HW4032A01 | BLACK DRAIN PLUG FOR WASH DOWN MOTORS | 3.000 EA |
| HW4600B49 | SEAL 0.938 X 1.624 X 0.250 SINGLE LIP DB | 1.000 EA |
| 12XN1032S20 | 10-32 X 1-1/4 HEX M.S. , STAINLESS STEEL | 2.000 EA |
| 51XB1214A16 | 12-14X1.00 HXWSSLD SERTYB | 1.000 EA |
| 35FH4005A32SP | IEC FH NO GRSSR W/3 HOLES - PRIMED | 1.000 EA |
| 11XW1032S06 | 10-32 X .38, TAPTITE II, HEX WSHR SLTD U | 3.000 EA |
| 35CB4522 | 35 LIPPED CB LID PRIMED | 1.000 EA |
| 35GS1030A02 | 35 GS FOR CB LID - WHITE NEOPRENE | 1.000 EA |

| Parts List (continued) | | |
|------------------------|--|----------|
| Part Number | Description | Quantity |
| 59XW0832S07 | TAPTITE II,HEX WSHR UNSLTD SER,410 S.S., | 4.000 EA |
| HW1003S08 | WASHER, #8 EX TH LK, SS | 4.000 EA |
| HW4600B39SP | V-RING SLINGER 0.550 X 0.790 X .18 VITON | 1.000 EA |
| HW4600B46 | V-RING SLINGER 0.875 X 1.420 X .24 VITON | 1.000 EA |
| HW2502D13 | SS KEY, 3/16 SQ X 1.375 | 1.000 EA |
| HA7000A04 | KEY RETAINER 0.625 DIA SHAFTS | 1.000 EA |
| MJ5001A27 | 32220KN GRAY SEALER *MIN BUY 4 QTS=1GAL | 0.001 QT |
| 85XU0407S04 | 4X1/4 U DRIVE PIN STAINLESS | 2.000 EA |
| LB1164 | LABEL,WARNING AND DRAIN | 1.000 EA |
| HA5027A01 | HA4066A01 T-DRAIN X2 BAGGED | 1.000 EA |
| WD1000A15 | 3-520132-2 AMP FLAG (4M/RL NON-CANC/NON- | 2.000 EA |
| MJ1000A02 | GREASE, POLYREX EM EXXON (USe 4824-15A) | 0.050 LB |
| 35FN3002A05 | EXFN, PLASTIC, 6.376 OD, .638 ID | 1.000 EA |
| MG1025Z02 | ACTIVATOR WILKOFAS 060.02HF | 0.010 GA |
| MG1025W01 | WILKOFAS 781.01, SIGNAL WHITE #9003 | 0.017 GA |
| HA3100S08 | THRUBOLT 7.375LG SS | 4.000 EA |
| 35GS1016A03 | GASKET, CAPAC BOX FOR 35CB4802 WD MOTORS | 1.000 EA |
| SP5051A24 | MODEL 35 TORQ STATIONARY SWITCH FOR "L" | 1.000 EA |
| LC0001 | CONN LABEL TYPE L, 6 LEAD, DUAL VOLTS, R | 1.000 EA |
| NP1496L | SS WD UL CSA CC | 1.000 EA |
| 35PA1066 | PKG GRP, PRINT PK1008A06 | 1.000 EA |
| MN416A01 | TAG-INSTAL-MAINT no wire (1200/bx) 11/14 | 1.000 EA |

AC Induction Motor Performance Data

Record # 37353 - Typical performance - not guaranteed values

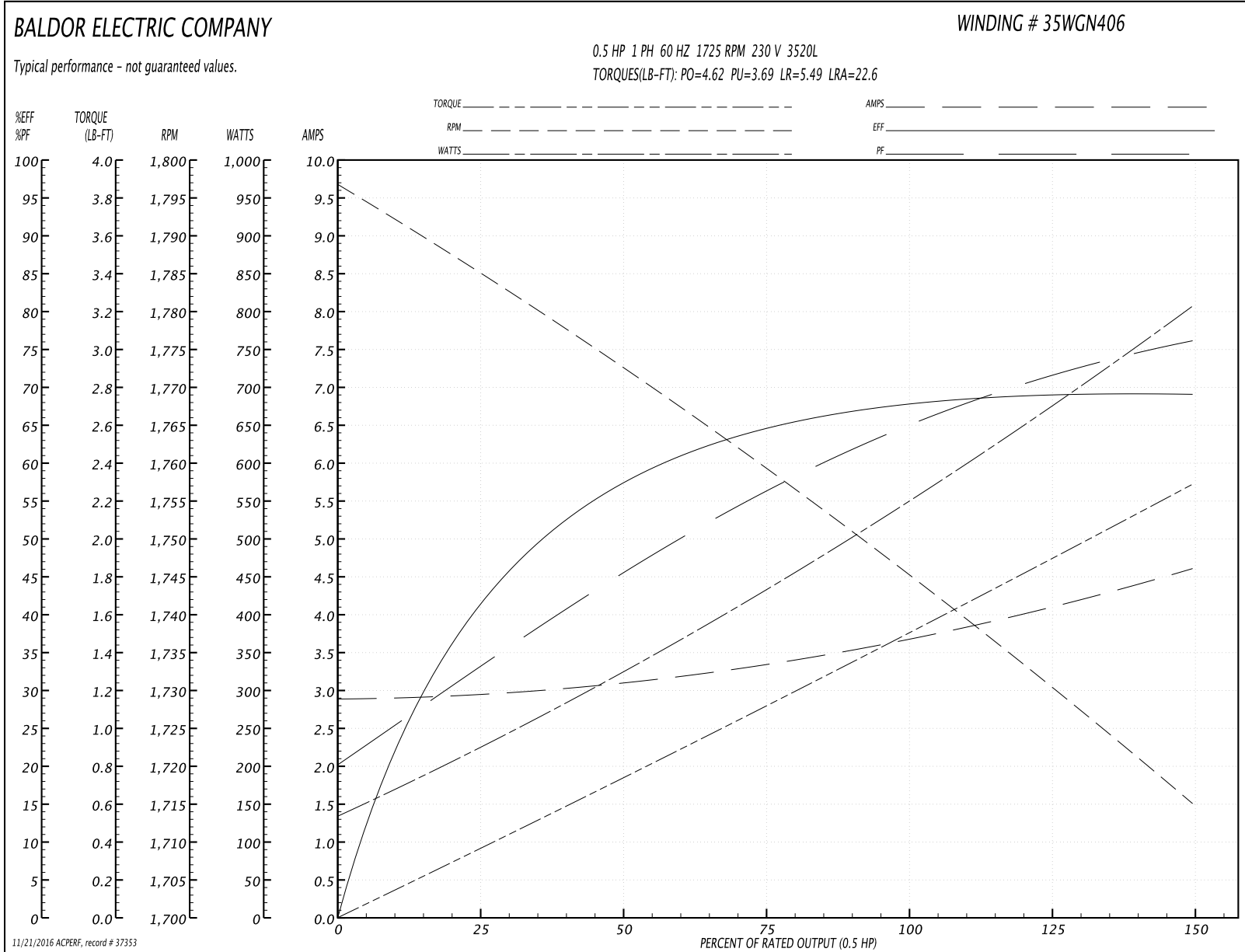
| | | |
|-------------------------------|--------------------|------------------------|
| Winding: 35WGN406-R001 | Type: 3520L | Enclosure: TEFC |
|-------------------------------|--------------------|------------------------|

| Nameplate Data | | | | 230 V, 60 Hz: High Voltage Connection | |
|-----------------------|--------------|--------------|----|--|--------------------------------|
| Rated Output (HP) | .5 | | | Full Load Torque | 1.51 LB-FT |
| Volts | 115/230 | | | Start Configuration | direct on line |
| Full Load Amps | 7.4/3.7 | | | Breakdown Torque | 4.62 LB-FT |
| R.P.M. | 1725 | | | Pull-up Torque | 3.69 LB-FT |
| Hz | 60 | Phase | 1 | Locked-rotor Torque | 5.49 LB-FT |
| NEMA Design Code | N | KVA Code | M | Starting Current | 22.6 A |
| Service Factor (S.F.) | 1.25 | | | No-load Current | 2.89 A |
| NEMA Nom. Eff. | 68 | Power Factor | 65 | Line-line Res. @ 25°C | 4.0781 Ω A Ph 2.4038 Ω B Ph |
| Rating - Duty | 40C AMB-CONT | | | Temp. Rise @ Rated Load | 67°C |
| S.F. Amps | 8.2/4.1 | | | Temp. Rise @ S.F. Load | 80°C |

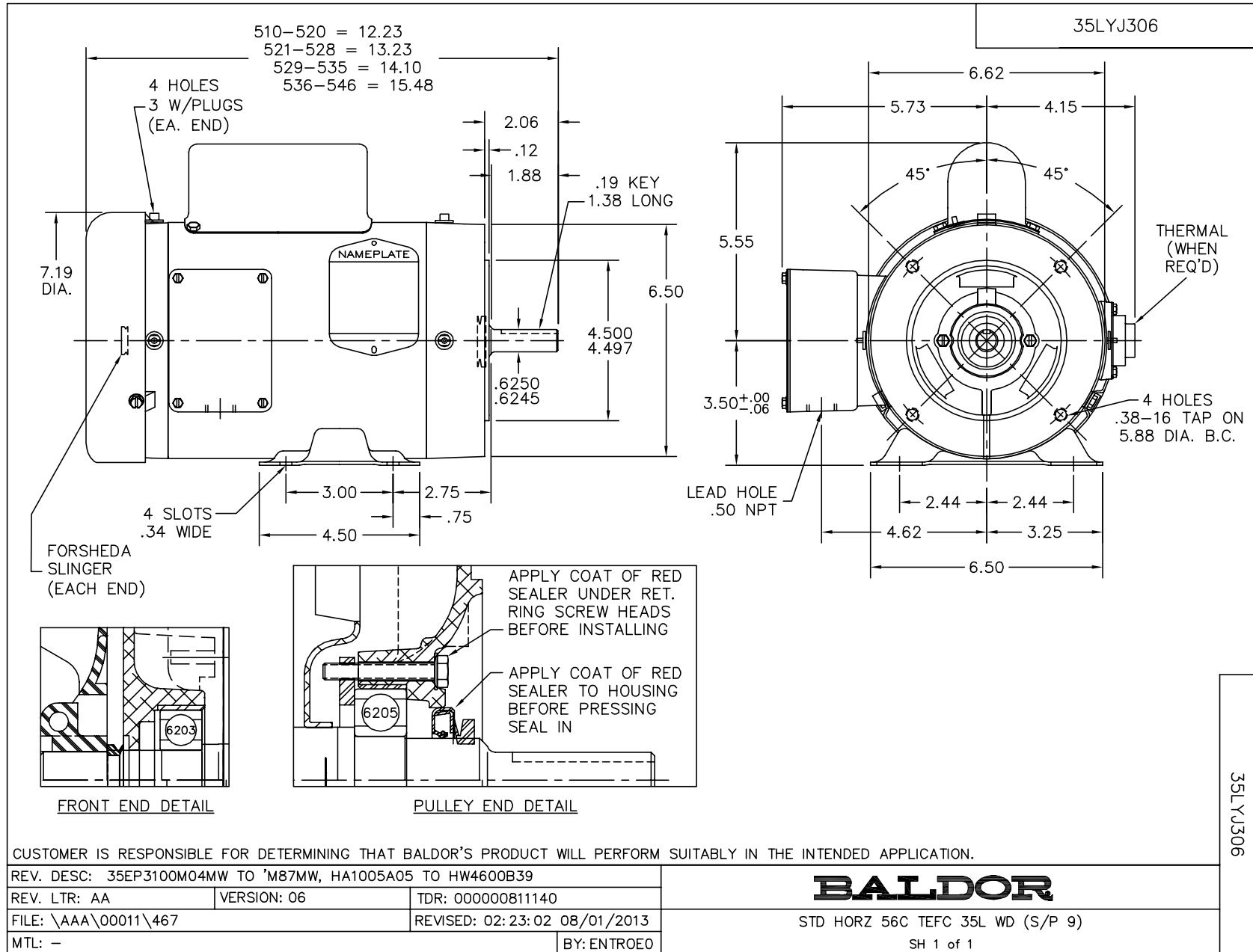
Load Characteristics 230 V, 60 Hz, 0.5 HP

| % of Rated Load | 25 | 50 | 75 | 100 | 125 | 150 | S.F. |
|-----------------|--------|------|--------|--------|--------|--------|------|
| Power Factor | 34 | 46 | 56 | 65 | 71 | 76 | 71 |
| Efficiency | 41.6 | 57.1 | 64.6 | 68 | 69 | 69 | 69 |
| Speed | 1783.2 | 1772 | 1759.8 | 1745.9 | 1730.5 | 1714.5 | 1730 |
| Line amperes | 2.95 | 3.09 | 3.35 | 3.69 | 4.1 | 4.61 | 4.1 |

Performance Graph at 230V, 60Hz, 0.5HP Typical performance - Not guaranteed values



11/21/2016 ACPERF: record # 37353



CD0001



CD0001

| | | | |
|---|---------|------------------------|--------------|
| REV. DESC: REVISE TO SHOW OPTIONAL COLORS | | | |
| REV. LTR: D | BY: JLP | REVISED: 04/08/99 1:16 | TDR: 0178636 |
| 100000 | | FILE: AAA00007405 | MDL: - |
| | | MTL: - | |

BALDOR ELECTRIC Co.

TYPE L, DV, REV, 6 LEADS